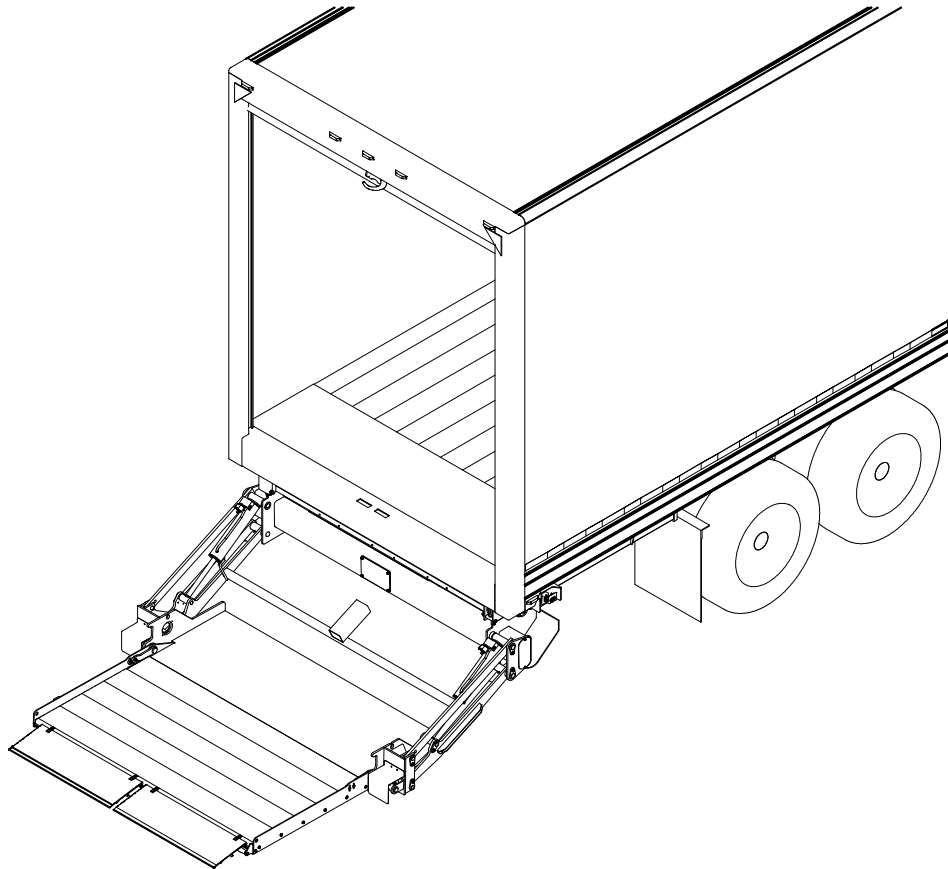


Installation Manual

GT-33, 44, 55

3300, 4400, 5500 lb. Capacity Flipaway Liftgates



Last Change:

Date	Pages	Description
9-2015	2, 21-24	Corrected page number in Table of Contents, Completed hydraulic schematics to include cylinders, lock valves, and drive motor.

Waltco Lift Corp.
Corporate Office United State
285 Northeast Ave.
Tallmadge, OH 44278
P: 330.633.9191
F: 330.633.1418

Waltco Lift Corp.
United States
620 S Hambledon Ave.
City of Industry, CA 91744
P: 626.964.0990
F: 626.964.0149

Waltco Lift Inc.
Canada
90 North Queen St.
Etobicoke, ON M8Z 2C5
P: 888-343.4550

Table of Contents



Improper installation of this liftgate could result in severe personal injury or death.

Read and understand the contents of these instructions before proceeding.

When installed, this liftgate must not alter or prevent vehicle compliance to any existing state or federal standards.

Each chassis manufacturer's recommendations should be consulted for compliance.

Introduction	3
1. Safety Information.....	4
2. Liftgate Terminology	6
3. Basic Mounting Requirements (Standard Mount).....	8
Basic Mounting Requirements (Canadian Under-ride Certified)	10
4. Installation	12
5. Placement of Decals	30
6. Lubrication Instructions	33
7. Final Inspection.....	34
8. How to Order Parts	35
9. <u>Optional Kit Instructions:</u>	
Hand Held Remote Kit.....	36
Kit #80001433	
Aux Battery Kits (Trailer)	37

INTRODUCTION

If anyone observes improper installation, improper operation, or damage, they should immediately contact a qualified person for assistance and correction. We strongly urge anyone that has any questions or doubts as to the installation, condition, use, operation, maintenance or repair of the liftgate to contact us at Waltco where we have qualified personnel that will be happy to assist you. Telephone numbers and addresses of these locations are listed in the Owner's Manual and Installation Instructions.

INSTALLATION

Waltco liftgates should only be installed by those with sufficient basic skills to understand the installation and operation of the liftgate, along with the equipment on which the liftgate is being installed. Waltco's installation instructions are not intended to give rationale for all the instructions that are given; however, it is the intent of these instructions to give the installer both the operations and what we believe to be the most desirable sequence of implementing these operations. These instructions can in no way expand into an area where they will replace a qualified person, or clear thinking and a basic knowledge that must be possessed by the installer.

It has been our experience that a knowledgeable journeyman following these instructions and observing the operation of the liftgate will have a sufficient comprehension of the liftgate to enable this person to troubleshoot and correct all normal problems that may be encountered.

Failure to follow the installation instructions, adjustments and mounting dimensions may result in improper and unsafe operation of the liftgate. Unauthorized alterations of the liftgate can cause an undesirable and dangerous condition.

OWNER'S MANUAL

The Waltco Owner's Manual is intended to act as a guide for operation and routine maintenance but is no way intended to encourage usage or repair of the liftgate by those who are not qualified to do so.

The contents of the owner's manual include, but are not limited to general operation instructions, routine lubrication, parts lists, and an outline of things that should be checked but may not be obvious to those not technically qualified. This manual assumes the liftgate is properly installed, undamaged and operates correctly. Improper installation, improper operation, or damage should be immediately corrected by a qualified person.

INSPECTION

As part of the regular inspection of a liftgate and after damage or suspicion of an overload, inspect for wear or structural damage and make necessary repairs or replacements. Check all structural components and their attachment to the liftgate for cracked welds, loose fasteners, wear and part deformation. Check cylinder and hose for leaks. Inspections and repairs should be made by a qualified mechanic.

REPLACEMENT PARTS

Use only Waltco original equipment replacement parts. Components of other liftgate manufacturers may outwardly appear to be the same but are not interchangeable with Waltco products. Waltco components are specifically designed for safety requirements, reliability and compatibility with our products. Refer to your Waltco parts manual when ordering parts. NOTE: When ordering, give model and serial number of liftgate.

DECALS

It is important that every vehicle that has a WALTCO Liftgate have legible DECALS clearly posted on the vehicle and an OWNER'S MANUAL in the vehicle at all times as a guide for proper operation and maintenance.

Additional DECALS and OWNER'S MANUALS can be obtained from WALTCO TRUCK EQUIPMENT COMPANY

80101388 Rev 02 EO 6156

Chapter 1 Safety Information

WARNING

Read, understand, and follow all of the warning listed below.

Failure to follow these warning could result in severe personal injury or death.

- Read and understand the Owner's Manual, all decals and warning on liftgate before operating liftgate.
- Do not operate liftgate without a thorough knowledge and understanding of the operation of the liftgate.
- Liftgate hazards can result in crushing or falling.
- This liftgate is designed for loading and unloading of cargo. If personnel are required to ride liftgate, observe and familiarize yourself with the liftgate operation, decals and manuals. Ensure stable footing at all times.
- Do not ride liftgate with unstable loads.
- Wheeled loads must be properly retained from rolling.
- Tall, high center of gravity loads must be retained from falling over.
- Never overload liftgate:
Load platform as close to the vehicle, and towards the middle of the platform as possible. Refer to owner's manual and capacity decal of liftgate for maximum load and load placement.
- Keep hands and feet clear of all potential pinch points.
- Never use liftgate if it makes any unusual noise, has unusual vibration, raises or lowers unevenly, or fails to operate smoothly.
- Never use liftgate if it shows any signs of structural damage such as cracked welds, bent or distorted members.
- Do not attempt any repairs unless you are qualified to do so. Care should be taken when work is performed on a disabled liftgate located near moving traffic. When possible the vehicle should be moved away from traffic areas for repair. Precautionary measures should be taken to ensure personal safety including those recommended in Federal Motor Vehicle Safety Standards 571.125.
- When welding to liftgate, or liftgate components, take all necessary safety precautions, including using respiratory protection and other pertinent personal protective gear when welding harmful materials.
- All protective covers, guards, and safety devices must be in place and access doors closed before operating liftgate.
- Do not allow anyone to stand in, or near area, in which Platform will open and close before opening or closing Platform.
- Do not allow anyone to stand near the Platform where a falling load could land on them.
- Platform is always to be properly stored and secured for transit. See the Owner's Manual for details.
- Take care to retain cargo during transit for liftgate Platforms which function as the tailgate or door of the cargo area. Small objects can fall through the space between the vehicle and the folded Platform.
- A Lock-Out device or Shut-Off Switch should always be used to prevent unauthorized use of liftgate.
- For liftgates with Runners, never use liftgate if Runners do not travel freely and smoothly.
- For liftgates with Roller Lifting Chain, the Chain should be replaced every (5) five years or 15,000 cycles, whichever comes first. Replace only with Waltco approved Roller Chain.
- Never transfer loads which exceed lifting capacity on or over any part of the Platform unless the liftgate is equipped with a special reinforced Platform and Platform Support Bars for use when the Platform is used as loading ramp (dock board). Refer to the "Using Platform as a loading ramp" Chapter in the Operation Instructions of the BZ/RZ series Owner's Manual.
- For liftgates equipped with Trailer Hitches, never exceed the rated capacity of the hitch. Do not exceed the vehicle's weight rating. Refer to the vehicle's Owner's Manual.
- Vehicle must comply with all state and federal standards.
- Follow the "Maintenance Guide" chapter in the Owner's Manual.

Chapter 1 Safety Information

Liftgates with Tilt Function

- Proper use of the Control Switches is of extreme importance.
- Improper use of Tilt Switch could cause load to fall from the Platform or damage the liftgate.
- Platform should be in a generally horizontal position when raising or lowering with a load.
- In any tilt position, the Platform may vary from level while raising or lowering the Platform.

Liftgates equipped with spring operated Cam Closer

- Replace Cam Release Spring every five (5) years or 15,000 cycles, whichever comes first.

RGL-Series Liftgates

- Make certain Platform Brake mechanisms are operating properly.
- The Runners are always to remain powered up against the Upstops Pins when in transit.
- Inspect Cables every three (3) months or 750 cycles, whichever comes first. Cables must be replaced if they show signs of wear, distortion, kinking or if any broken wires are visible
- Replace cables every five (5) years or 10,000 cycles, whichever comes first.



This is the safety alert symbol. This manual uses this symbol to alert you to potential personal injury hazards.

Obey all safety messages that follow this symbol to avoid personal injury or death.

SIGNAL WORDS

WARNING

Indicates a potentially hazardous situation, which if not avoided, could result in death or serious injury.

Black letters on an orange background

CAUTION

Indicates a potentially hazardous situation, which if not avoided, may result in minor or moderate injury. May also be used to alert against unsafe practices.

Black letters on a yellow background.

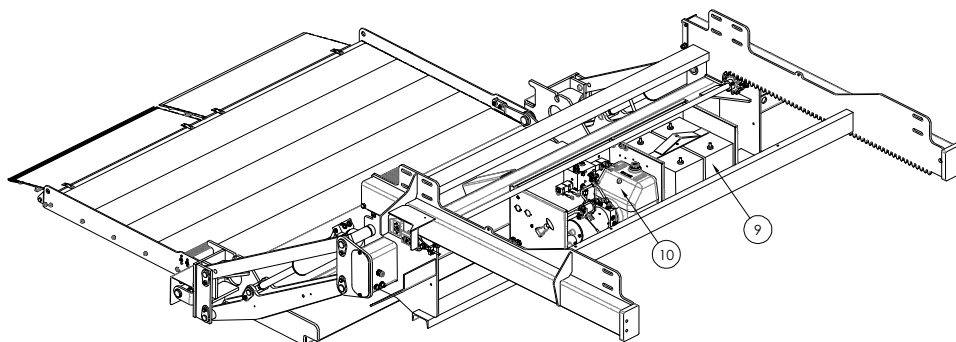
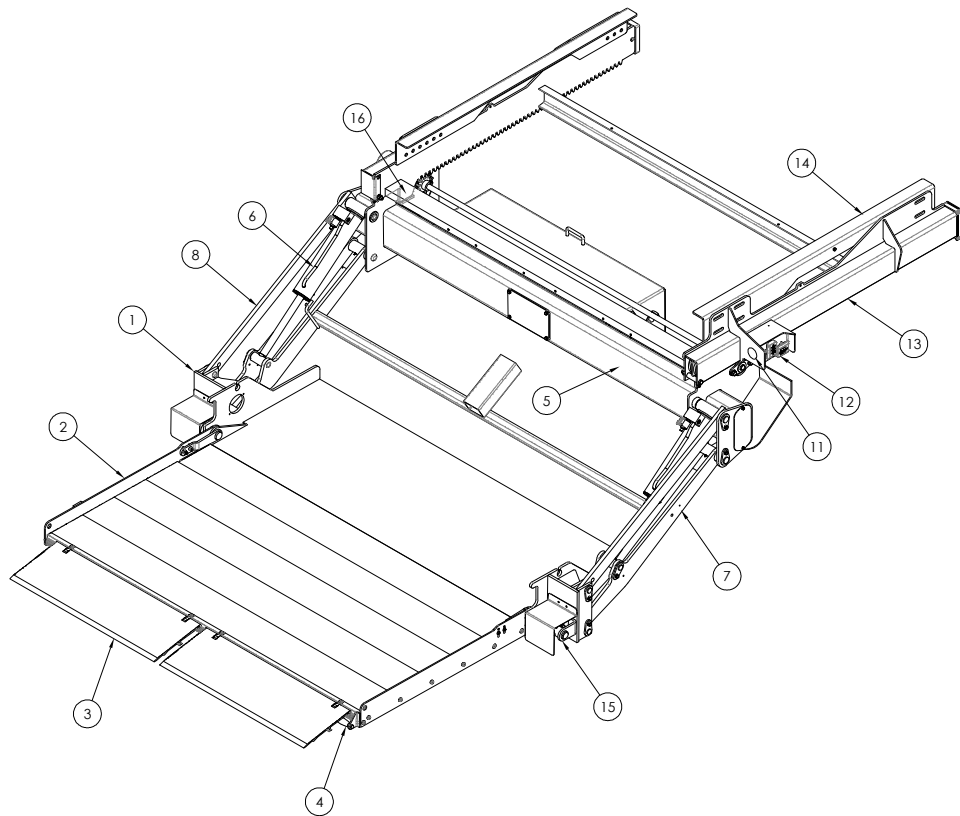
NOTICE

Indicates a potentially hazardous situation, which if not avoided, may result in property damage.



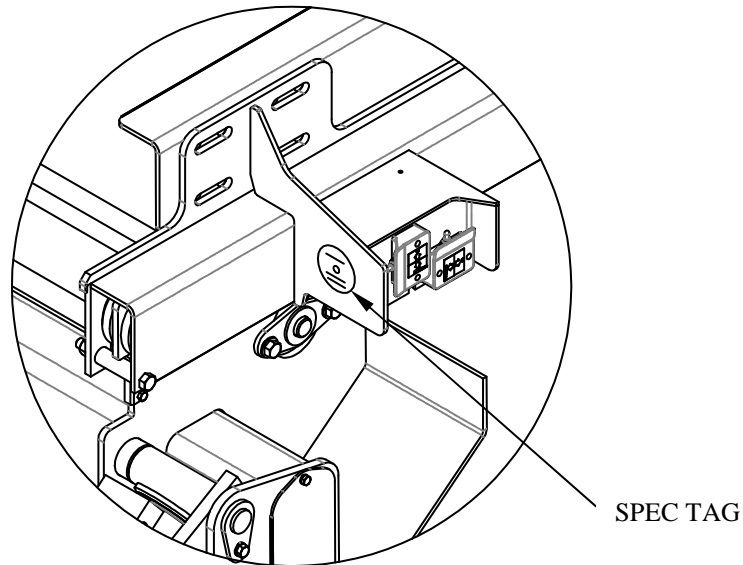
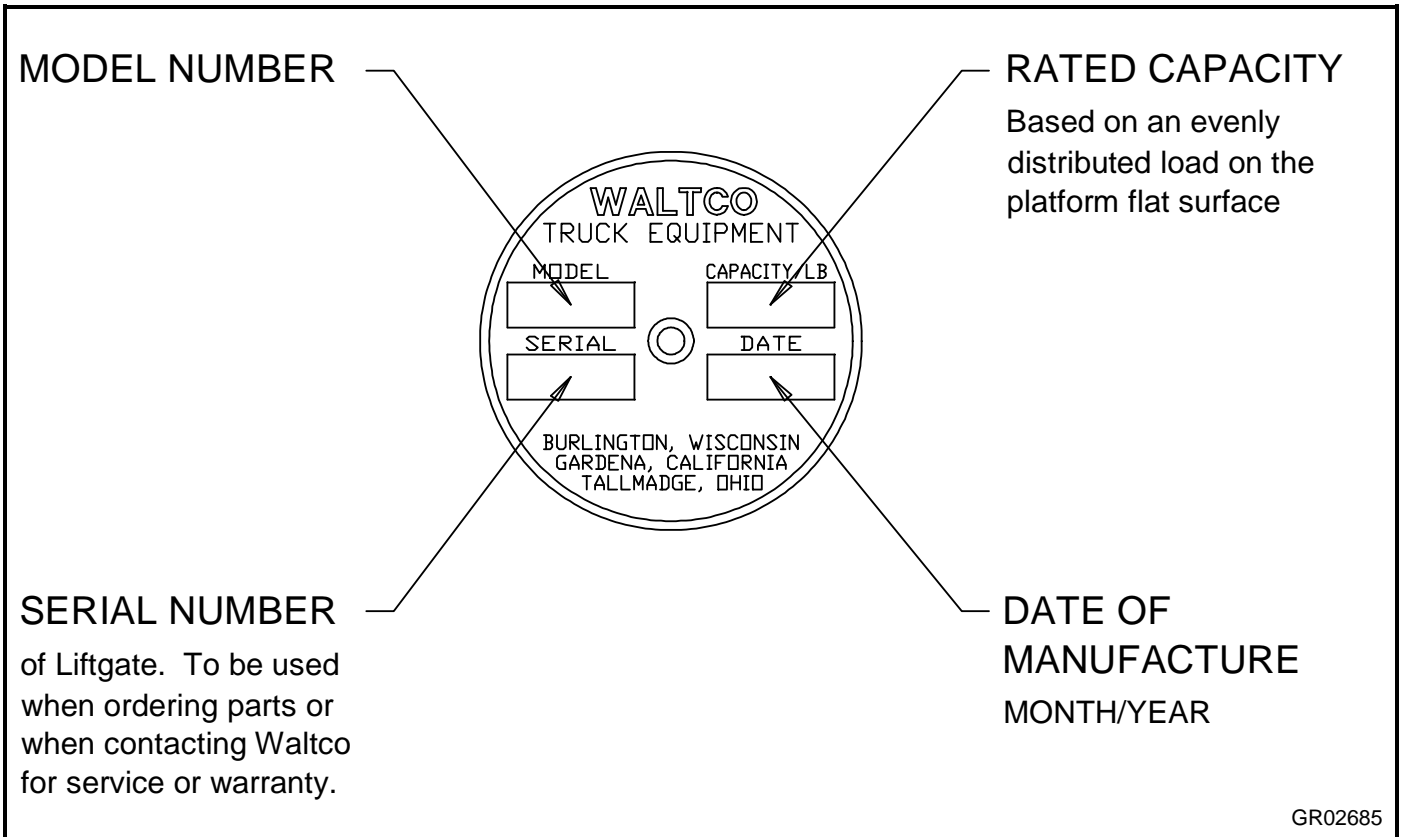
Chapter 2 Liftgate Terminology

- | | |
|--------------------|------------------------|
| 1. Deck | 10. Pump unit box |
| 2. Deck extension | 11. Identification tag |
| 3. Loading ramp | 12. Switches |
| 4. Platform Handle | 13. Slide tube |
| 5. Mount tube | 14. Mount angles |
| 6. Lift cylinder | 15. Torsion assistance |
| 7. Lift arm | 16. Up-stops |
| 8. Parallel arm | |
| 9. Battery box | |



Chapter 2 Liftgate Terminology

EXPLANATION OF SPECIFICATION TAG		
MODEL NO.	DESCRIPTION	CAPACITY
GT33	GT-33 SLIDER LIFTGATE	3300 LBS.
GT44	GT-44 SLIDER LIFTGATE	4400 LBS.
GT55	GT-55 SLIDER LIFTGATE	5500 LBS.

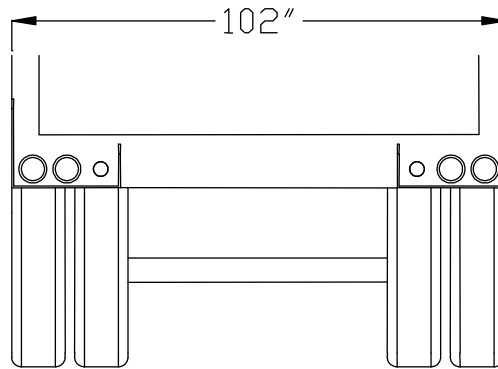


Chapter 3 Basic Mounting Requirements

TRAILER WIDTH

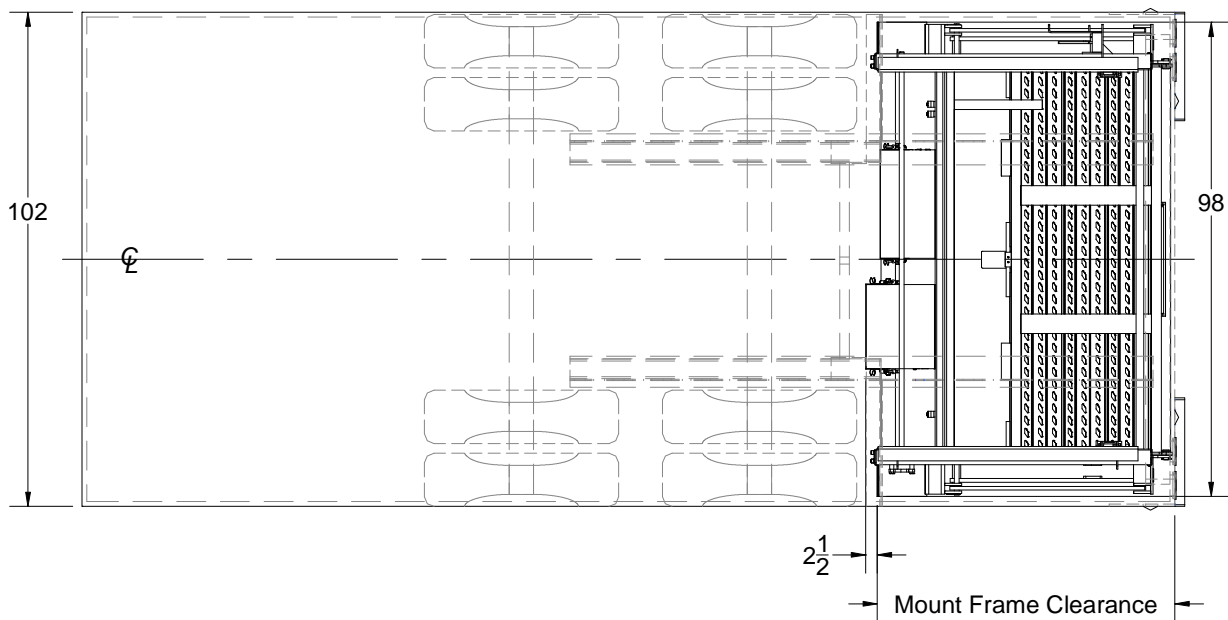
GT-33/44/55 liftgates are designed for 102" wide trailers.

IMPORTANT! Do not exceed maximum width of vehicle under any circumstances.



GR01431

TOP VIEW OF TRAILER

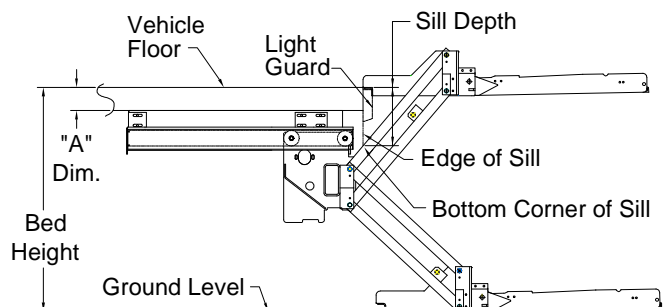


GR01472

DETERMINE MOUNTING DIMENSIONS

NOTE: Measure all dimensions when trailer is unloaded and on a flat horizontal surface.

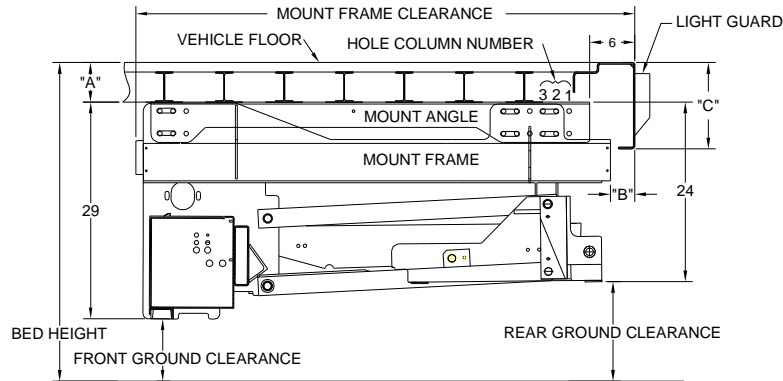
1. Determine the Bed Height. Measure from top of trailer floor down to ground level.
2. Determine "A" dimension = Bed Thickness. Measure from top of trailer floor to bottom of the trailer's cross members.
3. Determine Sill depth.



GR02257

Chapter 3 Basic Mounting Requirements

GT INSTALLATION DIMENSIONS STANDARD MOUNT (SHOWN IN STORED / TRANSPORT POSITION)



70X80 PLATFORM, SHORT ARMS (37-3/8"), SHORT TRACK (64")

"A"	MAX B.H.	"B" GATE PROTECTION	MAX SILL DEPTH "C"	HOLE COLUMN NUMBER	MOUNT FRAME CLEARANCE
4"	57"	3-1/8	13	3	67-1/4
5"	58"	2	15	2	66
6"	59"	3/4	17	1	64-3/4
6-1/4"	59-1/4"	1/2	17-3/4	1	64-1/2

80X80 PLATFORM, SHORT ARMS (37-3/8"), LONG TRACK (72-3/4")

"A"	MAX B.H.	"B" GATE PROTECTION	MAX SILL DEPTH "C"	HOLE COLUMN NUMBER	MOUNT FRAME CLEARANCE
4"	57"	3-1/8	13	3	76
5"	58"	2	15	2	74-3/4
6"	59"	3/4	17	1	73-1/2
6-1/4"	59-1/4"	1/2	17-3/4	1	73-1/4

70X80 PLATFORM, LONG ARMS (40-1/8"), MID TRACK (66-3/4")

"A"	MAX B.H.	"B" GATE PROTECTION	MAX SILL DEPTH "C"	HOLE COLUMN NUMBER	MOUNT FRAME CLEARANCE
6-1/2"	61"	4-1/2	13-1/2	3	71-1/2
7-1/2"	62"	3-1/4	15-1/2	3	70-1/4
8-1/2"	63"	1-7/8	17-3/4	2	68-3/4
9-1/2"	64"	1/2	20-1/2	1	67-1/2
9-3/4"	64-1/4"	1/4	21-1/4	1	67

80X80 PLATFORM, LONG ARMS (40-1/8"), LONG TRACK (72-3/4")

"A"	MAX B.H.	"B" GATE PROTECTION	MAX SILL DEPTH "C"	HOLE COLUMN NUMBER	MOUNT FRAME CLEARANCE
6-1/2"	61"	4-1/2	13-1/2	3	77-1/2
7-1/2"	62"	3-1/4	15-1/2	3	76-1/4
8-1/2"	63"	1-7/8	17-3/4	2	74-3/4
9-1/2"	64"	1/2	20-1/2	1	73-1/2
9-3/4"	64-1/4"	1/4	21-1/4	1	73

"A" : MEASURED FROM THE TRAILER'S FLOOR TO THE BOTTOM OF TRAILER'S CROSS MEMBERS.

"MOUNT FRAME CLEARANCE": AREA REQUIRED TO MOUNT LIFTGATE, MEASURING FROM REAR SILL TOWARDS FRONT OF VEHICLE. NOTE: BATTERY BOX WILL EXTEND 1-1/2" BEYOND THE "MOUNT FRAME CLEARANCE," IN THE MIDDLE OF THE LIFTGATE. CHECK CLEARANCES TO SUSPENSION AND BRAKE PARTS.

"GROUND CLEARANCE": DISTANCE FROM LOWEST POINT OF LIFTGATE TO GROUND LEVEL. FRONT GROUND CLEARANCE = "BED HEIGHT" - "A" DIM. - 29". REAR GROUND CLEARANCE = "BED HEIGHT" - "A" DIM. - 24"

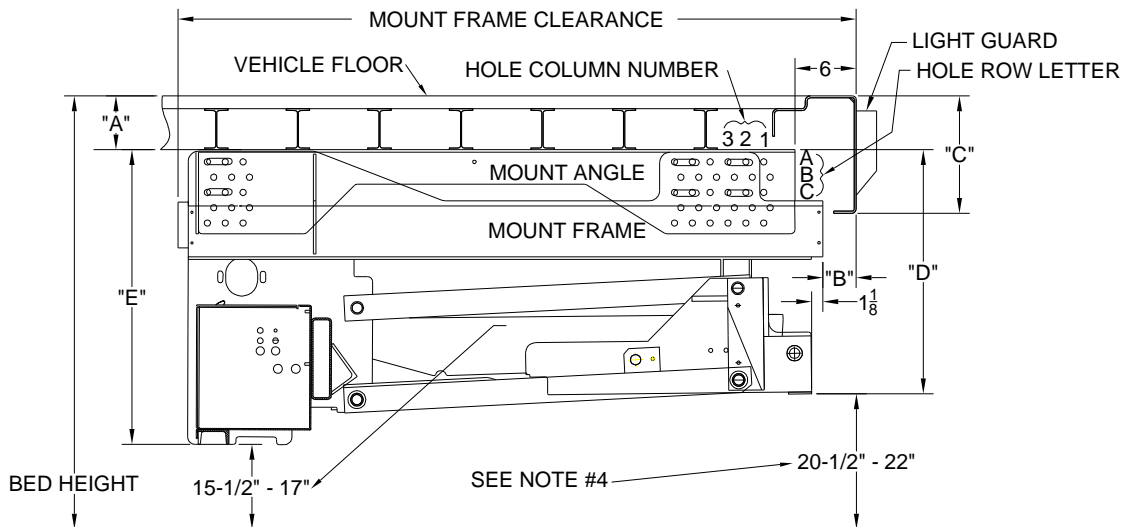
NOTES: 1) ALL DIMENSIONS GIVEN IN INCHES AND FIGURED WITH A FLAT REAR SILL MEETING THE FLOOR AT A SQUARE 90 DEGREE CORNER (NO ADDITIONAL STEPS). IF YOUR SILL HAS ADDITIONAL STEPS, HOLE COLUMN NUMBER MAY NEED INCREASED OR A FLIP RAMP MAY NEED TO BE FABRICATED OR FILLER STRIPS ADDED TO BRIDGE THE STEPS FROM THE TRAILER TO THE LIFTGATE.

2) "HOLE COLUMN NUMBER" IS THE HOLE IN WHICH THE REARMOST TOP SLOT OF THE MOUNT FRAME BOLTS INTO THE MOUNT ANGLE TO PLACE THE LIFTGATE INTO THE CORRECT INITIAL POSITION.

3) ALWAYS POSITION THE MOUNT ANGLE 6" FROM THE BACK OF THE REAR SILL AS SHOWN.

Chapter 3 Basic Mounting Requirements

GT INSTALLATION DIMENSIONS CANADIAN UNDER-RIDE MOUNTING (CANADIAN UNDER-RIDE MOUNT SHOWN IN STORED / TRANSPORT POSITION)



PLATFORM	ARMS	TRACK	"A" DIM	MAX B.H.	"B" DIM GATE PROTECTION	"C" DIM MAX SILL DEPTH	"D" DIM	"E" DIM	HOLE COLUMN NUMBER	HOLE ROW LETTER	MOUNT FRAME CLEARANCE
70 X 80	37-3/8	64	4	49-3/4	2-5/8	13	24-1/2	29-1/2	2	A	66-3/4
70 X 80	37-3/8	64	4	51-1/4	3/4	16-1/2	26	31	2	B	65
70 X 80	37-3/8	64	5	50-3/4	1-1/2	15-1/2	24-1/2	29-1/2	1	A	65-1/2
70 X 80	37-3/8	64	6	51-3/8	1/8	18	24-1/2	29-1/2	1	A	65-1/4
80 X 80	37-3/8	72-3/4	4	49-3/4	2-5/8	13	24-1/2	29-1/2	2	A	75-1/2
80 X 80	37-3/8	72-3/4	4	51-1/4	3/4	16-1/2	26	31	2	B	73-3/4
80 X 80	37-3/8	72-3/4	5	50-3/4	1-1/2	15-1/2	24-1/2	29-1/2	1	A	74-1/4
80 X 80	37-3/8	72-3/4	6	51-3/8	1/8	18	24-1/2	29-1/2	1	A	74
70 X 80	40-1/8	66-3/4	5	53-3/4	2	17	27-1/2	32-1/2	2	C	68-7/8
70 X 80	40-1/8	66-3/4	6	54-3/4	1/2	20	27-1/2	32-1/2	2	C	68-1/2
70 X 80	40-1/8	66-3/4	6-1/2	53-3/4	2	17	26	31	3	B	68-3/4
70 X 80	40-1/8	66-3/4	6-1/2	55-1/4	-3/8	20	27-1/2	32-1/2	1	C	66-1/2
70 X 80	40-1/8	66-3/4	7-1/2	54-3/4	1/2	20	26	31	2	B	67-1/2
70 X 80	40-1/8	66-3/4	8-1/2	54-1/4	1-1/4	18-3/4	24-1/2	29-1/2	3	A	68-1/4
70 X 80	40-1/8	66-3/4	9-1/2	54-3/4	-1/4	21	24-1/2	29-1/2	1	A	66-1/2
70 X 80	40-1/8	66-3/4	9-3/4	55-1/4	-3/4	22	24-1/2	29-1/2	1	A	66-1/4
80 X 80	40-1/8	72-3/4	5	53-3/4	2	17	27-1/2	32-1/2	2	C	74-7/8
80 X 80	40-1/8	72-3/4	6	54-3/4	1/2	20	27-1/2	32-1/2	2	C	74-1/2
80 X 80	40-1/8	72-3/4	6-1/2	53-3/4	2	17	26	31	3	B	74-3/4
80 X 80	40-1/8	72-3/4	6-1/2	55-1/4	-3/8	20	27-1/2	32-1/2	1	C	72-1/2
80 X 80	40-1/8	72-3/4	7-1/2	54-3/4	1/2	20	26	31	2	B	73-1/2
80 X 80	40-1/8	72-3/4	8-1/2	54-1/4	1-1/4	18-3/4	26	31	1	B	74-1/4
80 X 80	40-1/8	72-3/4	9-1/2	54-3/4	-1/4	21	24-1/2	29-1/2	1	A	72-1/2
80 X 80	40-1/8	72-3/4	9-3/4	55-1/4	-3/4	22	24-1/2	29-1/2	1	A	72-1/4

"A" DIM: MEASURED FROM THE TRAILER'S FLOOR TO THE BOTTOM OF TRAILER'S CROSS MEMBERS.

"MOUNT FRAME CLEARANCE": AREA REQUIRED TO MOUNT LIFTGATE, MEASURING FROM REAR SILL TOWARDS FRONT OF VEHICLE. NOTE: BATTERY BOX WILL EXTEND 1-1/2" BEYOND THE "MOUNT FRAME CLEARANCE," IN THE MIDDLE OF THE LIFTGATE. CHECK CLEARANCES TO SUSPENSION AND BRAKE PARTS.

"GROUND CLEARANCE": DISTANCE FROM LOWEST POINT OF LIFTGATE TO GROUND LEVEL. FRONT GROUND CLEARANCE = "BED HEIGHT" - "A" DIM. - 29". REAR GROUND CLEARANCE = "BED HEIGHT" - "A" DIM. - 24"

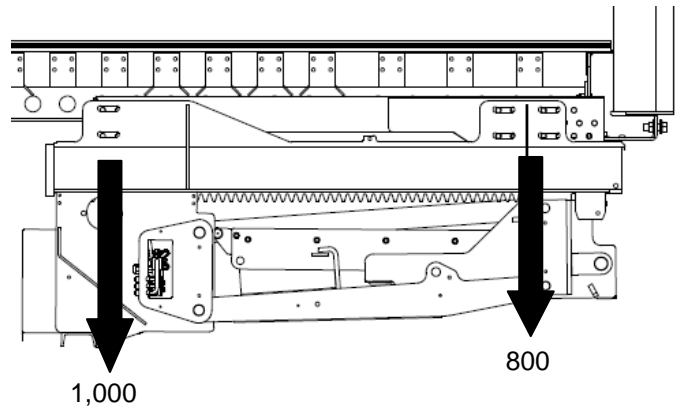
- NOTES:** 1) ALL DIMENSIONS GIVEN IN INCHES AND FIGURED WITH A FLAT REAR SILL MEETING THE FLOOR AT A SQUARE 90 DEGREE CORNER (NO ADDITIONAL STEPS). IF YOUR SILL HAS ADDITIONAL STEPS, HOLE COLUMN NUMBER MAY NEED INCREASED OR A FLIP RAMP MAY NEED TO BE FABRICATED OR FILLER STRIPS ADDED TO BRIDGE THE STEPS FROM THE TRAILER TO THE LIFTGATE.
 2) "HOLE COLUMN NUMBER" AND "HOLE ROW LETTER" IDENTIFIES THE HOLE IN WHICH THE REARMOST TOP SLOT OF THE MOUNT FRAME BOLTS INTO THE MOUNT ANGLE TO PLACE THE LIFTGATE INTO THE CORRECT INITIAL POSITION.
 3) ALWAYS POSITION THE MOUNT ANGLE 6" FROM THE BACK OF THE REAR SILL AS SHOWN.
 4) GROUND CLEARANCE WILL FALL IN THIS RANGE WHEN MOUNTED ACCORDING TO THIS CHART (CANADIAN UNDERIDE STANDARDS) UNLESS THE BED HEIGHT IS LOWER THAN 49-3/4" THEN THE CLEARANCE WILL BE REDUCED BY 49-3/4" - BED HEIGHT

Chapter 3 Basic Mounting Requirements

INSTALLATION WEIGHT

Make sure that trailer is capable of supporting liftgate forces when liftgate is in stored position and when liftgate is loaded to full capacity.

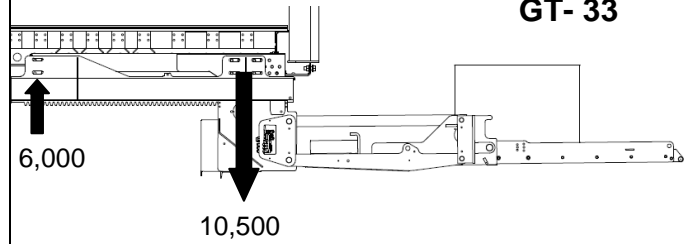
Note that forces shown here are in pounds and are distributed over two liftgate rails.



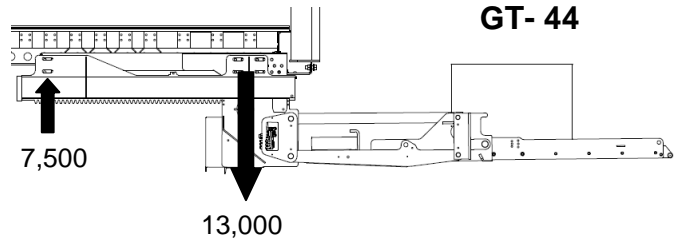
GATE STORED

GATE DEPLOYED

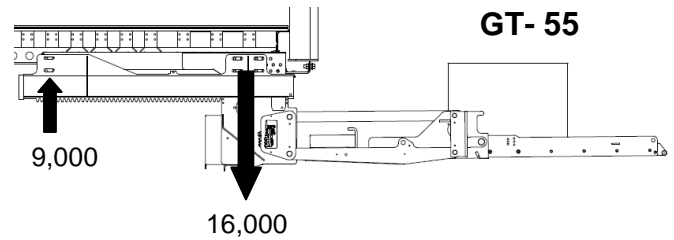
GT- 33



GT- 44



GT- 55



Chapter 4 Liftgate Installation


CONNECT BATTERIES


Connect Positive Cable inside Battery Box to positive terminal on Battery via Circuit Breaker as shown. Studs on Circuit Breaker are labeled BAT and AUX. Connect Battery Stud to Bat Terminal and Battery Cable to Aux Terminal. Connect Ground Cable as shown.

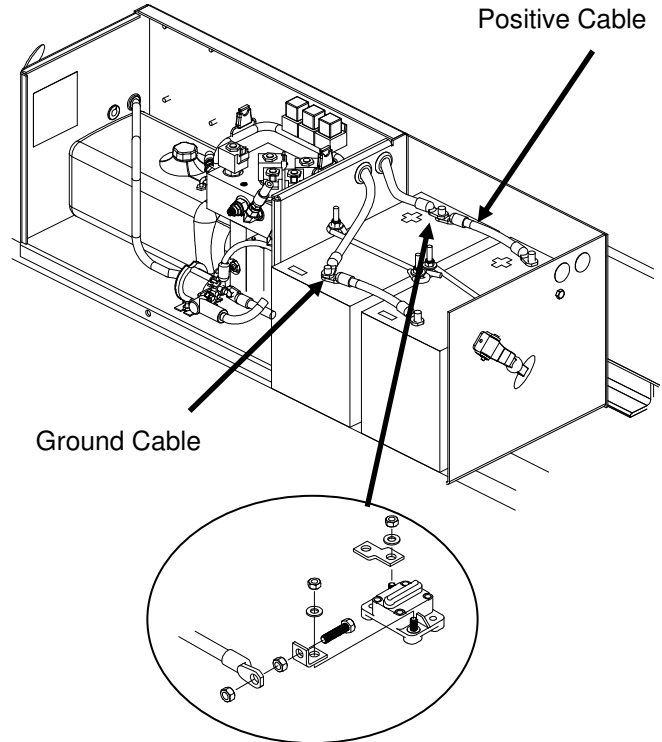
Make sure that Batteries are secured tightly.

Note! Add dielectric grease to all Connectors.

NOTE! Make sure Batteries are fully charged and connected before moving Liftgate underneath Trailer!

 **Do not connect any other wires at this time.**

 **Be certain Wires are protected from any sharp edges or holes that may abrade insulated covering of Wires**




PREPARATION OF BODY

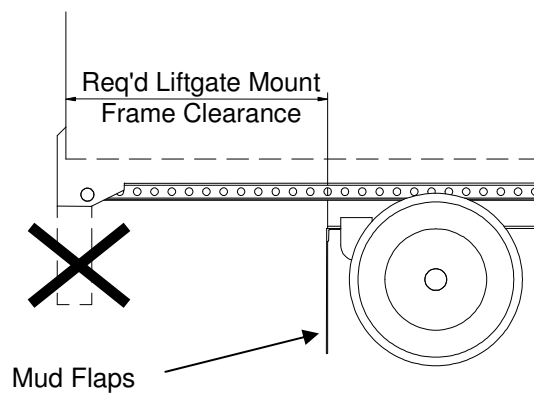
Remove all obstructions that will interfere with Liftgate mounting or operation.

- Bumper or Under Ride Guard
- License Plate
- Mud Flaps
- Other projections

Move Slide-Axles forward if necessary to attain required (liftgate) **Mount Frame Clearance**. This dimension is found in **Installation Dimensions**.

Determine where new full length mud flap (provided) will attach. Should be as close to wheels as possible. Do not mount at this time.

 **Make sure that Trailer Cross Members are relatively straight and can support forces from Liftgate. It may also be necessary to remove extensive rust or anti-rust protection from Cross Members to have a good surface for welding.**



GR01256

Chapter 4 Liftgate Installation

CHECK BOLTING LOCATION

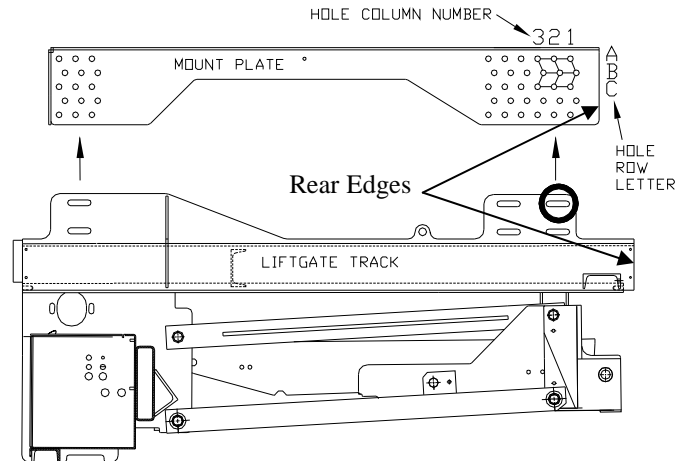
Ensure that the Track is in the proper starting location. Check **page 9** for the proper Hole Column Number for standard gates or **page 10** for Hole Column Number and Hole Row Letter for Canadian Under-ride gates. Standard Mount Plates only have one row.

Track should be positioned such that the slot shown circled at right bolts into the correct Hole in the Mount Plate (Canadian Under-ride shown).

If the slot is in the wrong hole location, remove Mount Bolts and position Mount Plates correctly. Reinstall Mount Bolts and temporarily torque tight.

⚠ Adjust holes in slots such that both mount plate rear edges are in same position relative to rear edge of liftgate track

⚠ During the final positioning adjustments, Hole Column Number may change depending on Rear Sill configuration. Never change Hole Row Letter as this may take Liftgate out of Canadian Underride compliance



GR02617

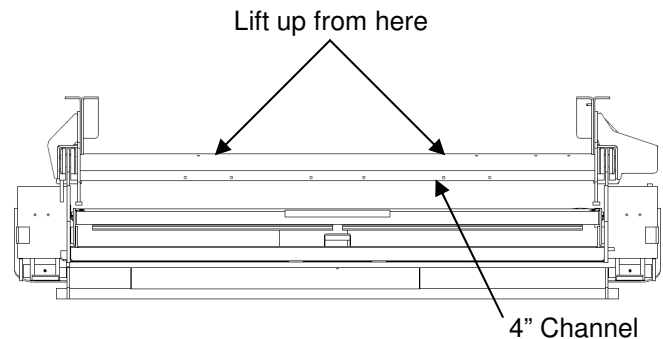
LIFTING THE GATE

Always lift gate up from shown position (under 4" channels).

NOTE: Set forks to widest width possible to avoid bowing of 4" channels.

Use fork extensions if needed.

NOTE: Failure to lift gate up according to instructions can damage the gate.



Chapter 4 Liftgate Installation

ALIGNING LIFTGATE WITH TRAILER

Align liftgate to be centered with Trailer.

Lift the gate up and move underneath Trailer.

Lift the gate up against the Trailer's Cross Members.

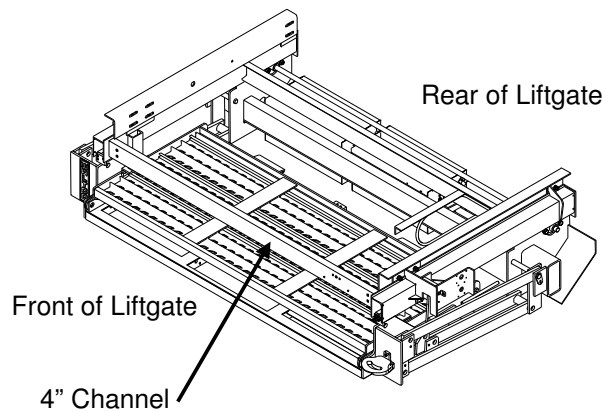
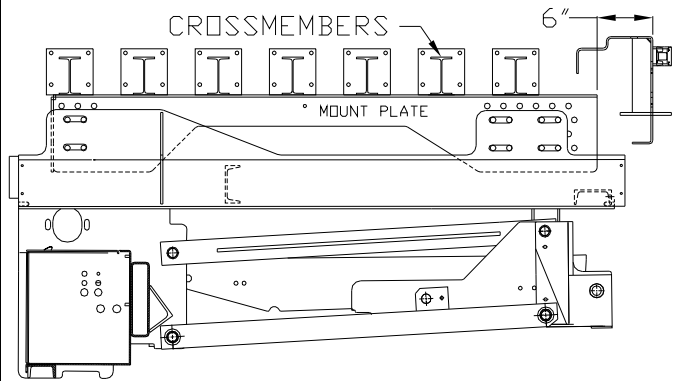
Continue to move the Liftgate forward (underneath) Trailer until the 6" dimension shown is achieved. This dimension is measured from rear of Mount Plate to the back of Rear Sill (do not include misc. hardware such as "Eyebrows" or Door Locks in measurement). Checking 6" dimension in (2) places will assist in getting Liftgate square with the Rear Sill.



It is important that the Liftgate be centered and aligned square to Rear Sill only! Allow the rear of Liftgate to float.

Note! Usually Liftgate can be aligned only to a certain degree with a forklift truck. After that, final adjustments usually require such tools as a crowbar and rubber mallet.

Note! Verify Liftgate is square and properly aligned before tack welding in position.



GR01480 & GR01479

Chapter 4 Liftgate Installation

TACK WELD THE GATE

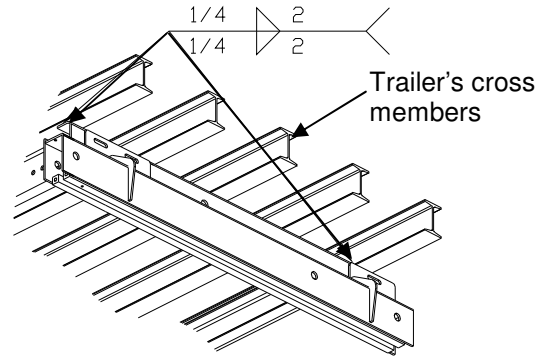
Weld Mount Angles to Cross Members as shown from both sides (4 plcs).



Weld parallel to Cross Members, along the top of the Mounting Angles. Never perpendicular to the Cross Members, as structural damage to Trailer could result.



Do not go underneath of Liftgate or Platform before the Liftgate is fully welded!



GR02619

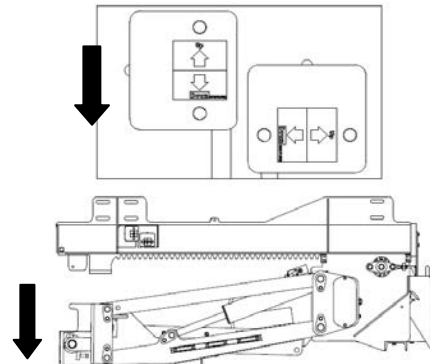
POSITION PLATFORM



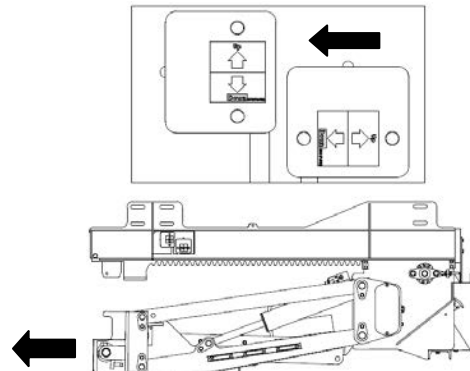
Always make certain area in which Platform will open is clear.

Push Lower Switch to lower Platform from storage position.

Do not lower Platform to ground level, lower just enough to clear Storage Stops.



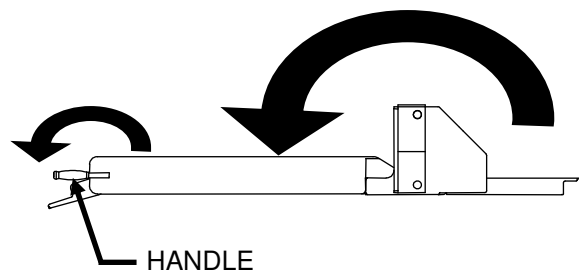
Push Open Switch to move Platform to working position.



Lower Platform to ground.

Open Platform Extension and Loading Ramps manually.

Note! Use handle to open Platform Extension.

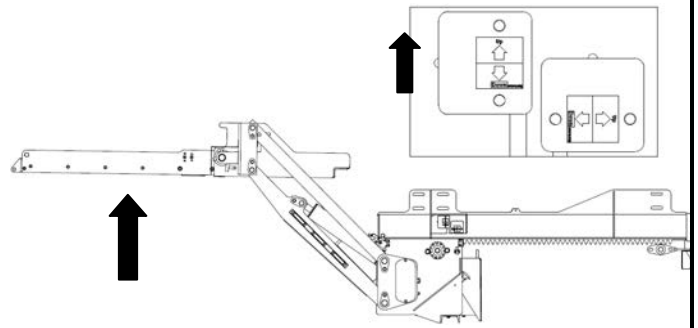


GR01233

Chapter 4 Liftgate Installation

Raise Platform almost to bed level.

Note! Liftgate has not yet been aligned. Be careful not to hit Trailer with Platform.

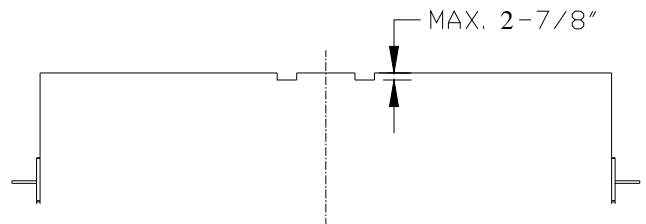


PLATFORM NOTCHING

It is usually necessary to notch Platform in order to prevent it from hitting the Trailer Door Hardware. It may be necessary to move the platform upstops to prevent them from hitting Trailer Door Hardware. Do not remove, just move them to a new location that does not interfere with Trailer Door Hardware.

Measure for required notches, cut and re-paint.

Note! Max. notch depth is 2-7/8"



GR01274

FINE TUNING PLATFORM POSITION

Platform Edge must align with Rear Sill as shown (just over Rear Sill Radius allowing upstops to contact the Rear Sill).

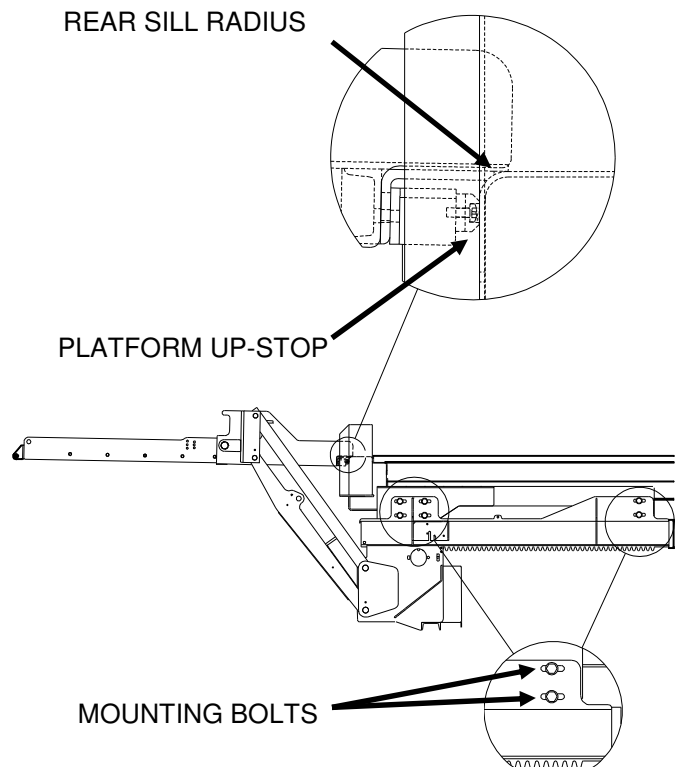
If Platform is hitting Rear Sill too low:

Loosen Mounting Bolts from Mount Plates (12 plc's).
 Pull liftgate out as much as needed.
 Approximately 1" out will raise platform 1".
 Test that platform aligns properly.
 Tighten all Mount Bolts (12 plc's) to 80 ft-lbs.

If Platform is hitting Rear Sill too high:

Loosen Mounting Bolts from Mount Plates (12 plc's).
 Push Liftgate in as much as needed.
 Approximately 1" in will lower platform 1".
 Test that Platform aligns properly.
 Tighten up all bolts (12 plc's) to 80 ft-lbs.

It is important that both sides of Liftgate be adjusted in or out by equal amounts. Adjusting one side more than the other may result in the Liftgate binding when running Liftgate in or out of the stored position.



Chapter 4 Liftgate Installation

FINAL WELDING OF MOUNT ANGLES

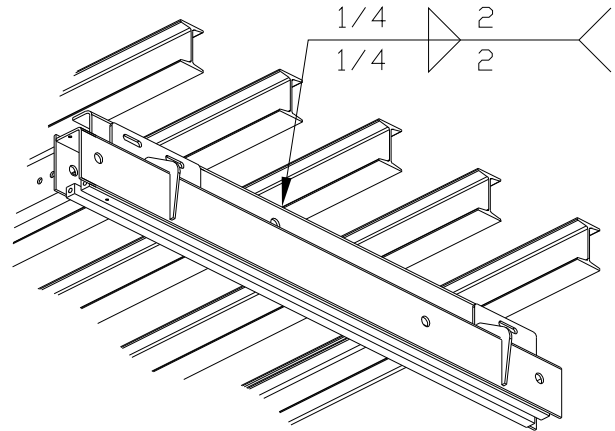
Test that the Liftgate will move in and out before final welding of Mount Angles.

Make all final welds to Mounting Angles and Trailer as shown.



Weld parallel to Cross Members, along top of Mounting Angles. Never perpendicular to Cross Members, as structural damage to the Trailer could result.

Note! Weld one section at time and then opposite side to prevent welds from distorting Mount Track.



GR01265

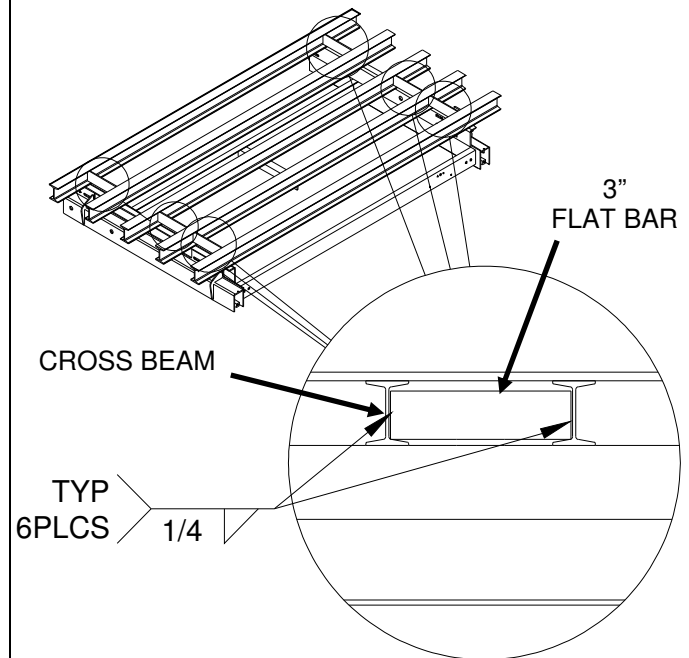
INSTALL TRAILER MOUNTING ANGLE SUPPORTS

Trailer's I-beams will need to be re-enforced in six (6) places and Mount Angles will be connected to these re-enforcement bars in four (4) places.

Measure the distance between Cross Members and cut 3" flat bar to be 1/8" shorter (6 pieces required).

Weld 3" flat bar between crossbeams as shown.

Locate four (4) support flat bars as close to corners as possible. Two (2) flat bars will be located behind first plates as shown. Flat bars to be vertically in line with mounting angles, see below.

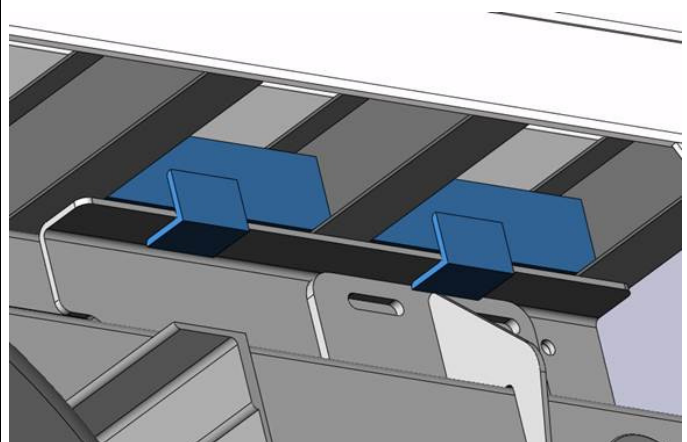


For GT-55:

Use provided angles on both sides of the rear ward mount angles that are "T" shaped.

Center the angles between the crossmembers as shown to right.

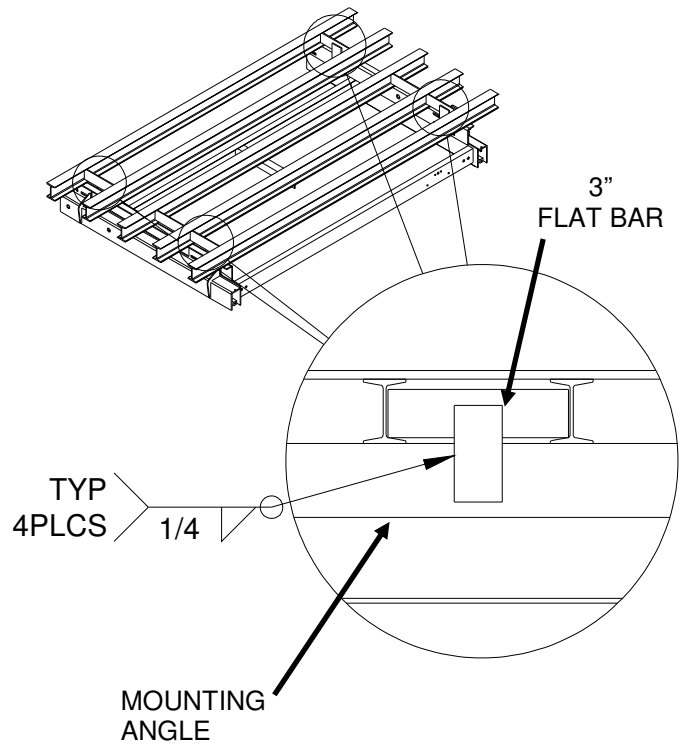
Weld (8) angles 100% with 1/4" weld.



GR01495

Chapter 4 Liftgate Installation

Connect 3" plates to mounting angles by welding 3" flat bar to plate and mounting angle as shown in all corners (4 places).

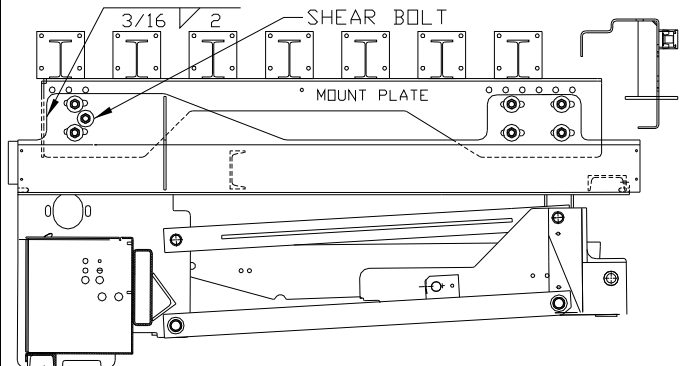


GR01496

SECURING WELDS

Weld OR bolt Track Frame to Mount Angles as shown.

Note! Bolt Mount Plate to Track Frame with 9/16" Shear Bolt if easy Liftgate removal is desired. This requires a 9/16" hole through the Track Frame an existing Mount Plate hole and insert a 9/16" shear bolt.

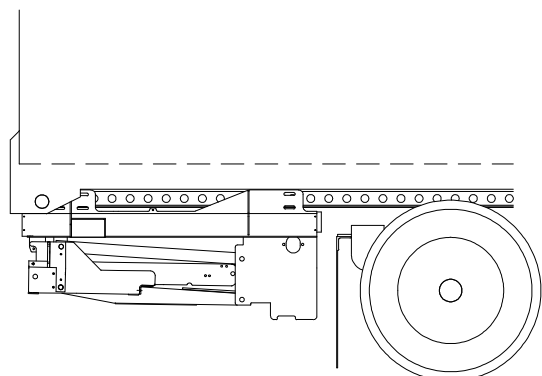


GR02618

INSTALL FULL LENGTH MUDFLAP

Sandwich the 30" x 100" Mudflap (provided) between the 100" Angle and 100" Flatbar (provided), with the bolts and hardware (provided). Install the full length Mudflap as close to the wheels as possible.

IMPORTANT: Failure to install full length mudflap voids warranty on pump box components and hydraulic cylinders.

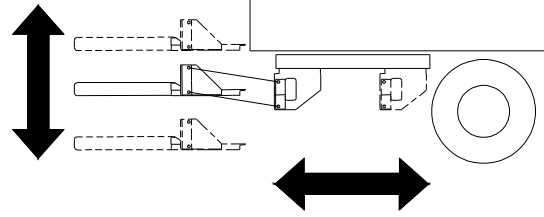


Chapter 4 Liftgate Installation

CHECK THE LIFTGATE OPERATIONS

Check that Liftgate operates freely and smoothly, and that there are no unusual noises or vibrations.

Run all movements several times to remove any air from hydraulic system.



GR01242

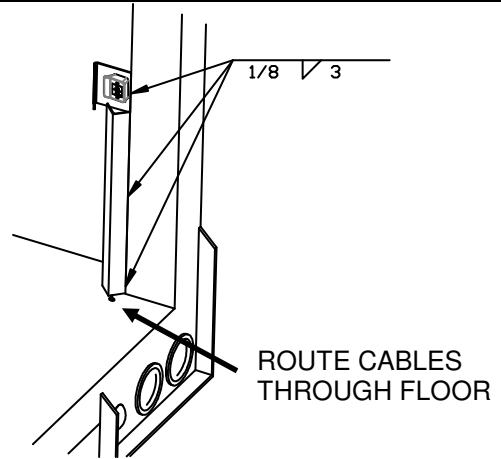
INSIDE SWITCH

Drill hole (1" dia.) for cable in trailer floor.

Weld inside switch to corner post as shown.

Route cable to pump unit box and connect to pump units wiring harness by matching connectors and by grounding white wire.

Make sure that cable doesn't pinch when gate moves. Use wire ties to secure cable.



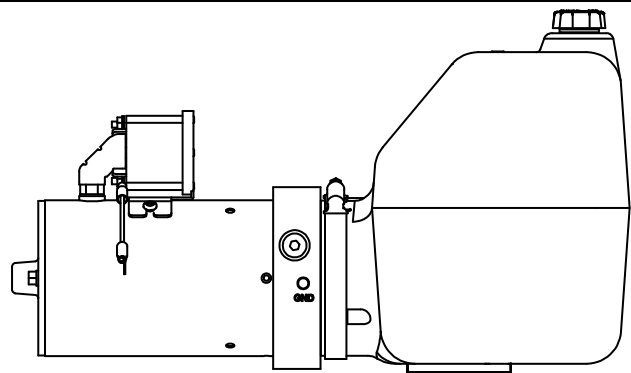
CHECK OIL LEVEL

See chart below for proper platform position for oil check.

Oil level should be within 1/2" to fill line (over or above) marked on the side of Oil tank.

Fill as may be required

Follow oil recommendations.



LIFTGATE POSITION FOR OIL LEVEL CHECK

	Gravity Down Pump:	Power Down Pump:
Deck should be in this position:	Lowered to Ground Level	Raised to Bed Level

Chapter 4 Liftgate Installation

Recommended Fluids

Temperature Range	Acceptable Fluids
0° to 120° F	Waltco Biodegradable Liftlube™ part #85803860
	Shell Tellus S2 V 32
	Chevron Rando HDZ 32
-20° to 90° F	Waltco Biodegradable LiftLube Arctic part #85803866
	Waltco All Season Hyd Oil Part 85803867
	Shell Tellus S2 V 15
	Mobil DTE 10 Excell 15

A good quality SAE 10W motor oil may also be used in temperatures above 32° F.

Fill reservoir

- Fill with recommended fluid or equivalent.
- Fill the reservoir to within 1/2" from the top.
- Fluids are available from the Waltco parts Dept. 1-800-411-5685 www.waltco.com

NOTE:

Do not use the following fluids:

Brake Fluid

Power steering fluid

Automatic Transmission Fluid (ATF)

Rev 06

FINISH WIRING

For Direct Power kits run the charge line to the single or dual pole charge plug at the front of the trailer.

For Trail Charger kits run the trail charger cable to the front of the trailer and follow supplied trail charger installation instructions.

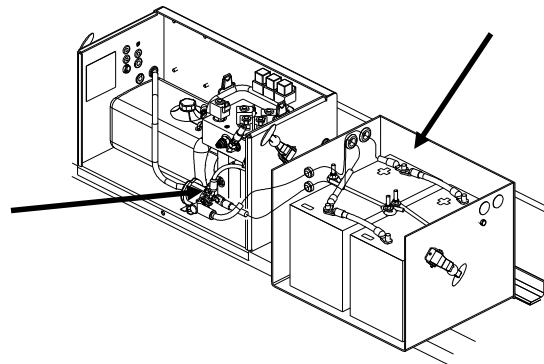
Establish a good ground between the tractor and trailer (not through fifth wheel).

ADD DIELECTRIC GREASE TO CONNECTORS

All connectors must be covered with dielectric grease (not supplied).

Note especially following locations:

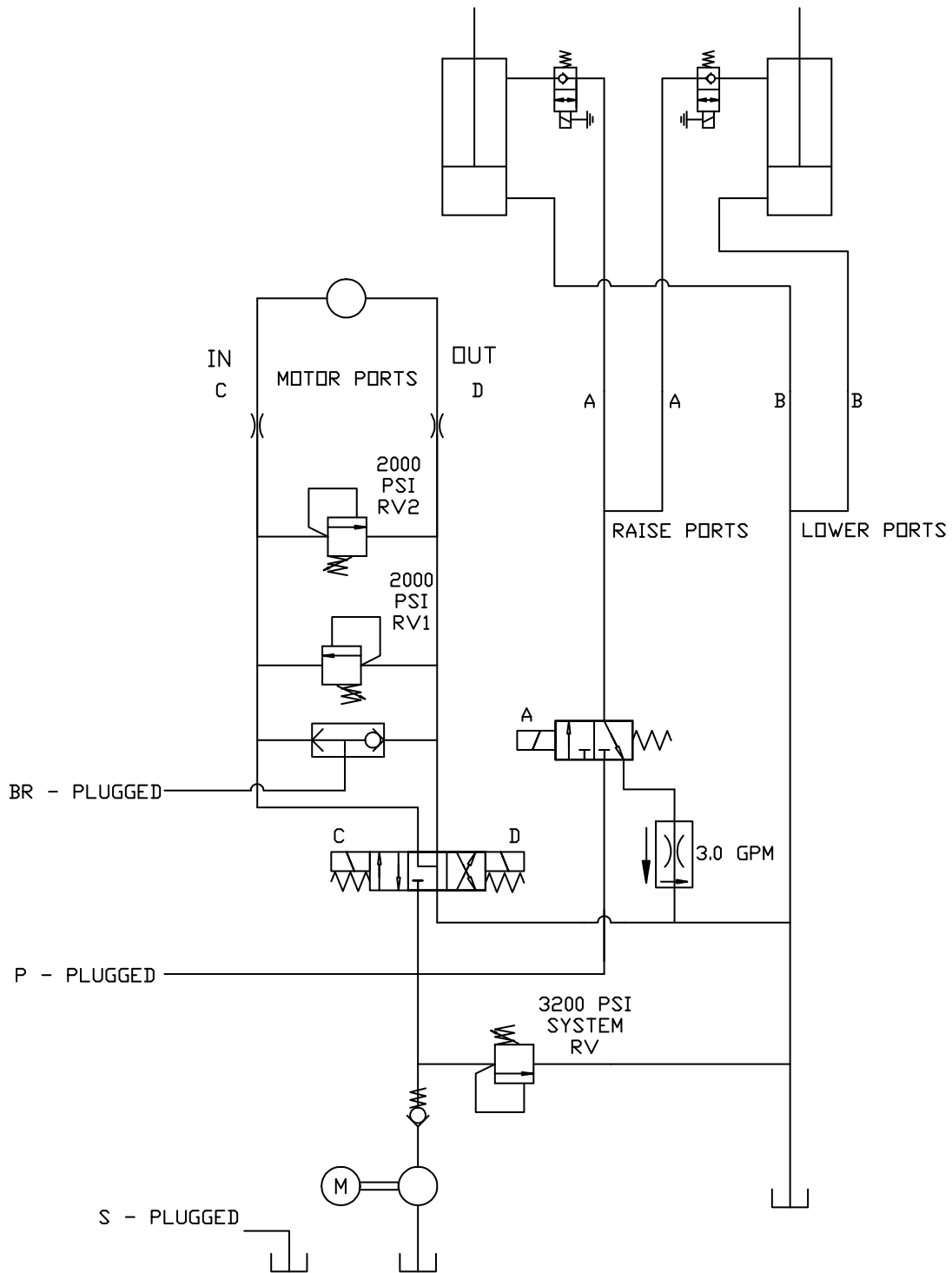
- Positive battery pole
- Control switch cables



GR01408

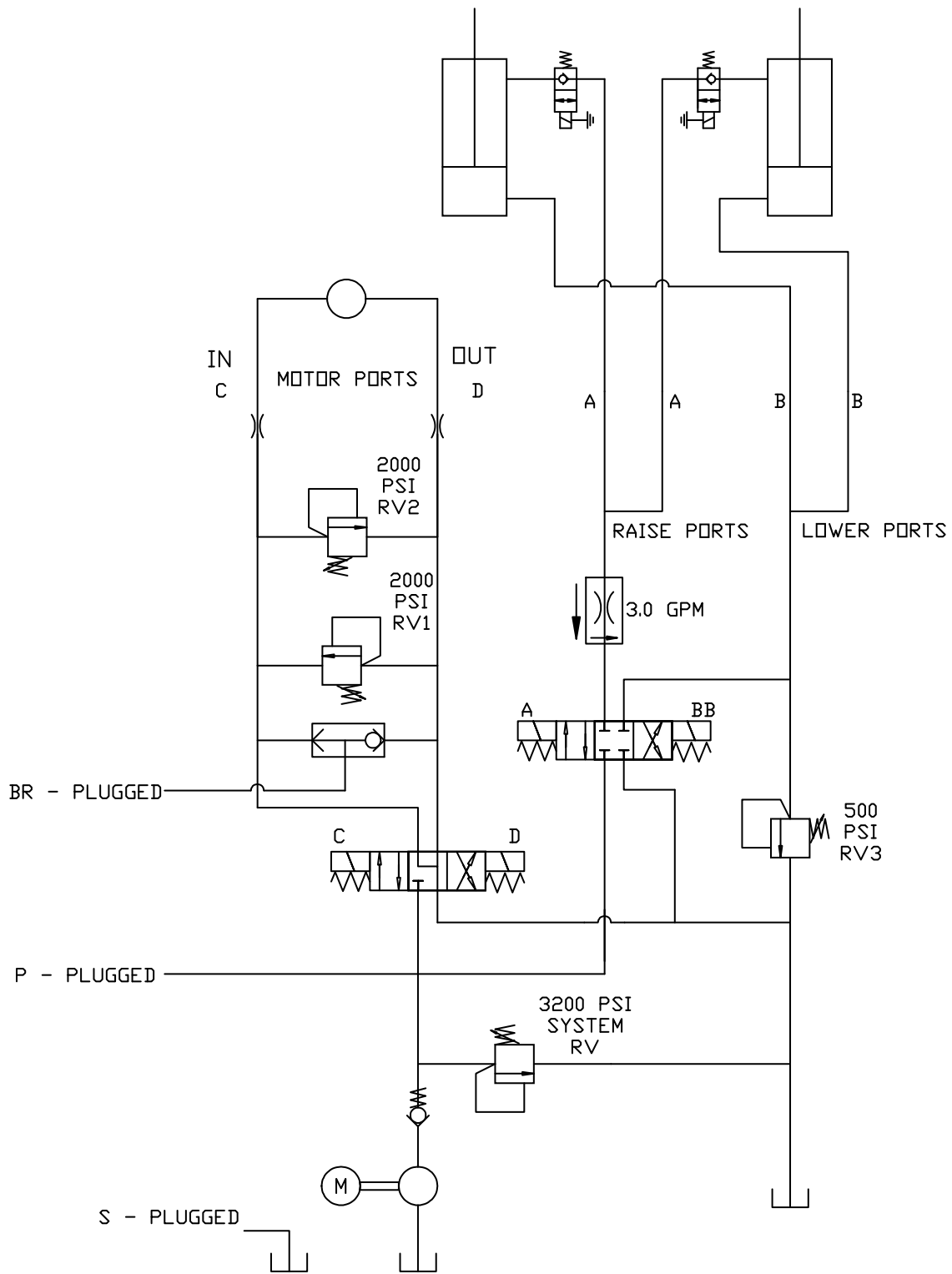
Chapter 4 Liftgate Installation

Hydraulic Schematic - Single Pump Gravity Down



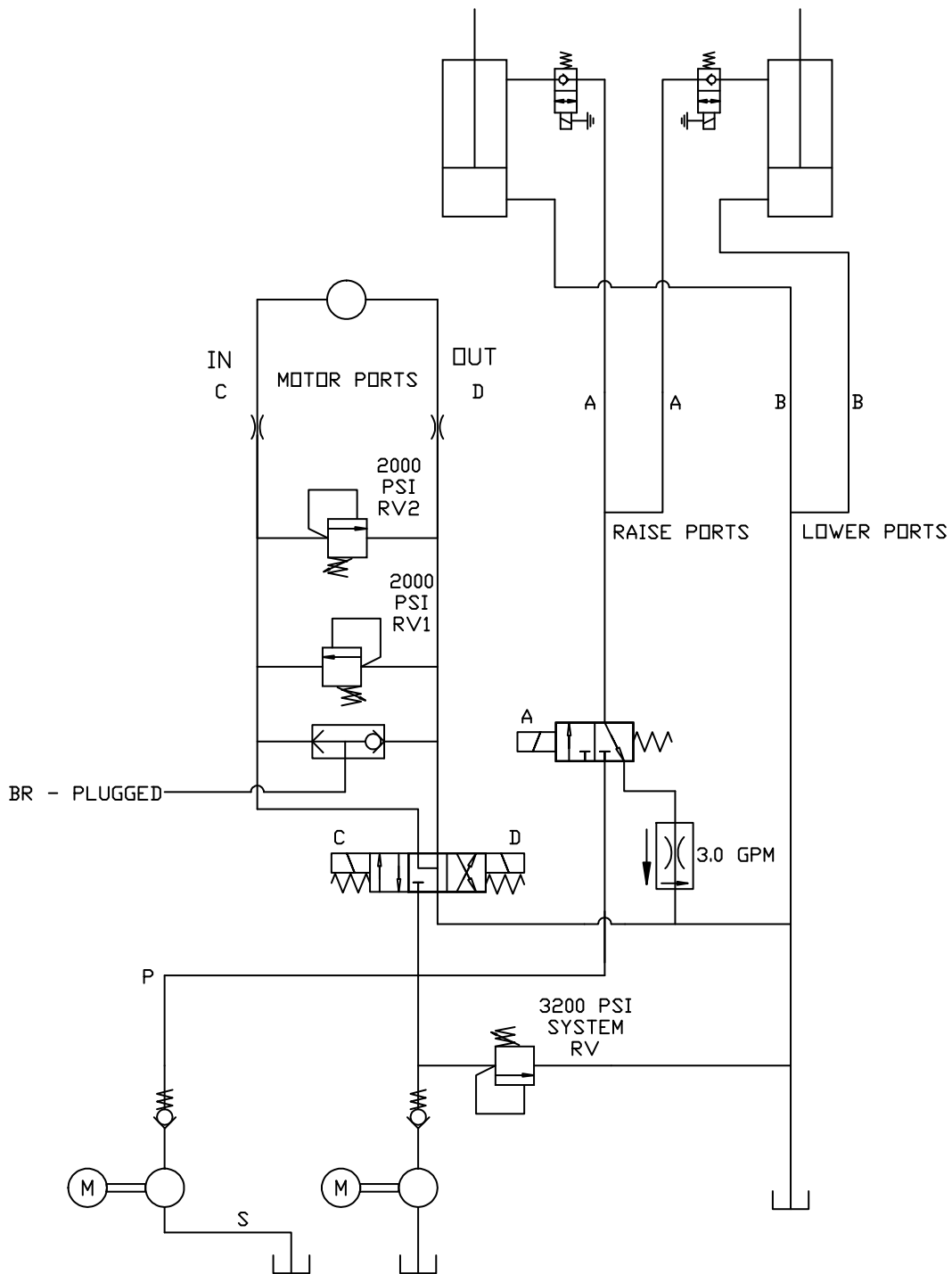
Chapter 4 Liftgate Installation

Hydraulic Schematic - Single Pump Power Down



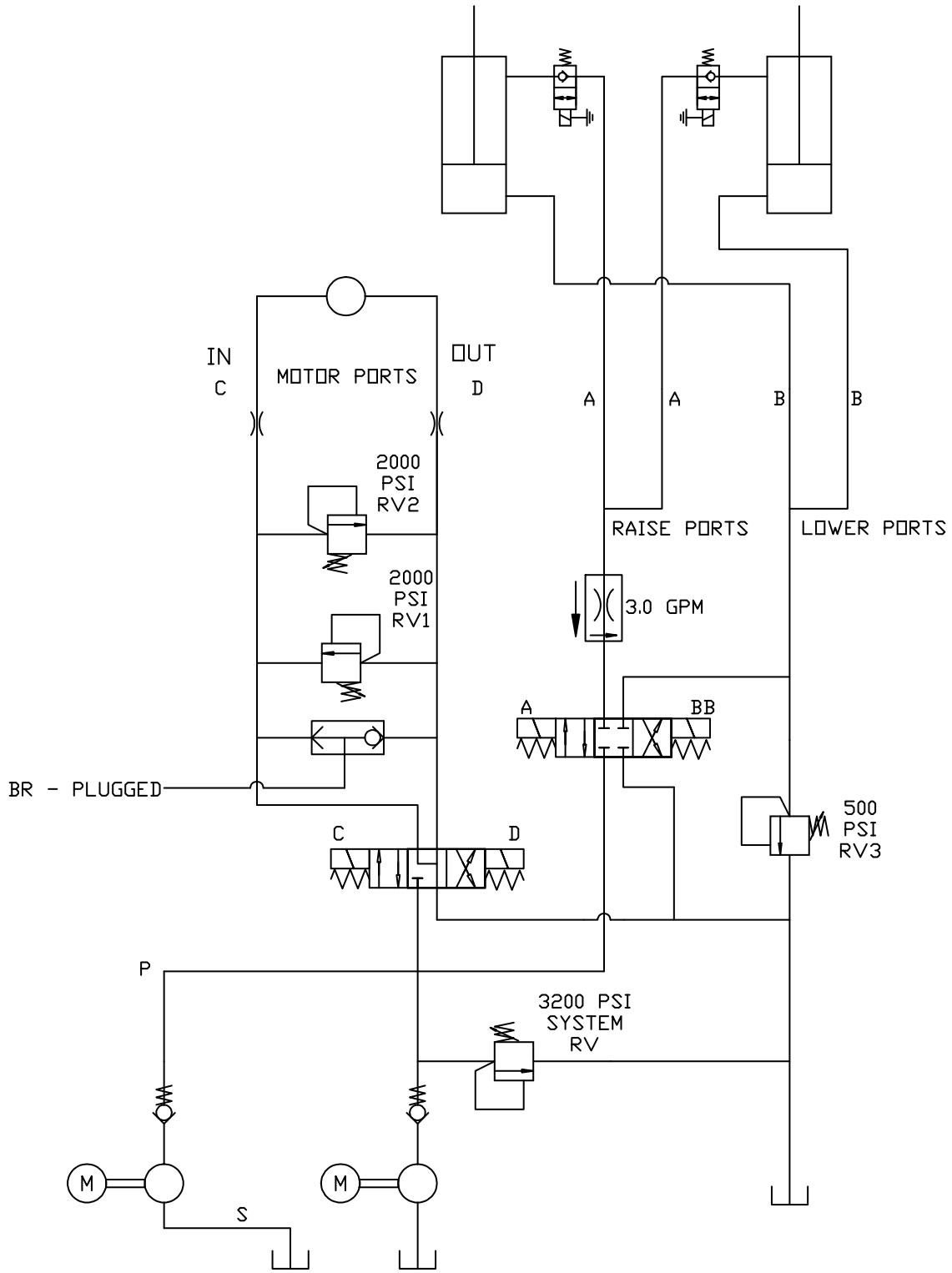
Chapter 4 Liftgate Installation

Hydraulic Schematic - Dual Pump Gravity Down



Chapter 4 Liftgate Installation

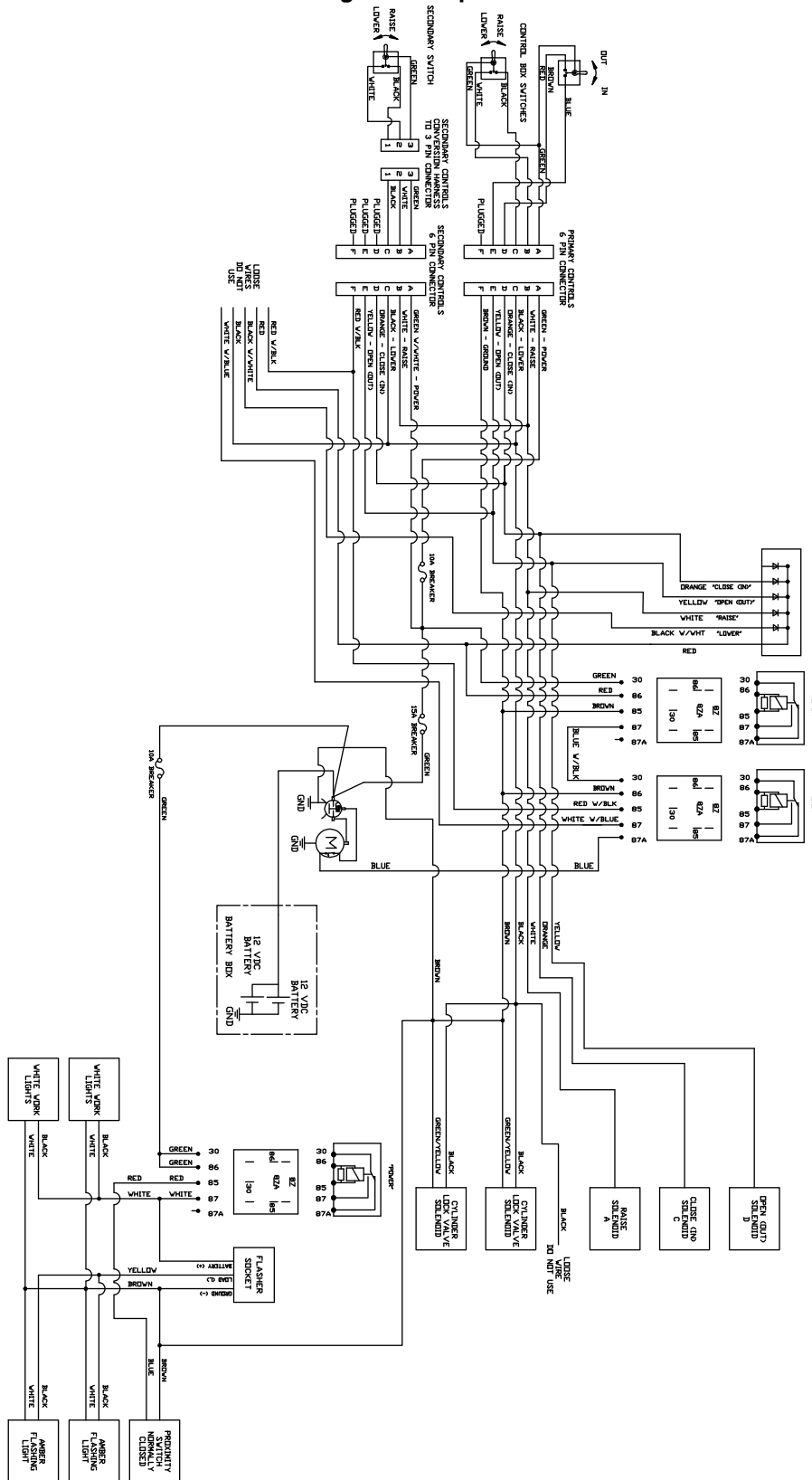
Hydraulic Schematic - Dual Pump Power Down



Chapter 4 Liftgate Installation

Electrical Schematic – Single Pump Gravity Down

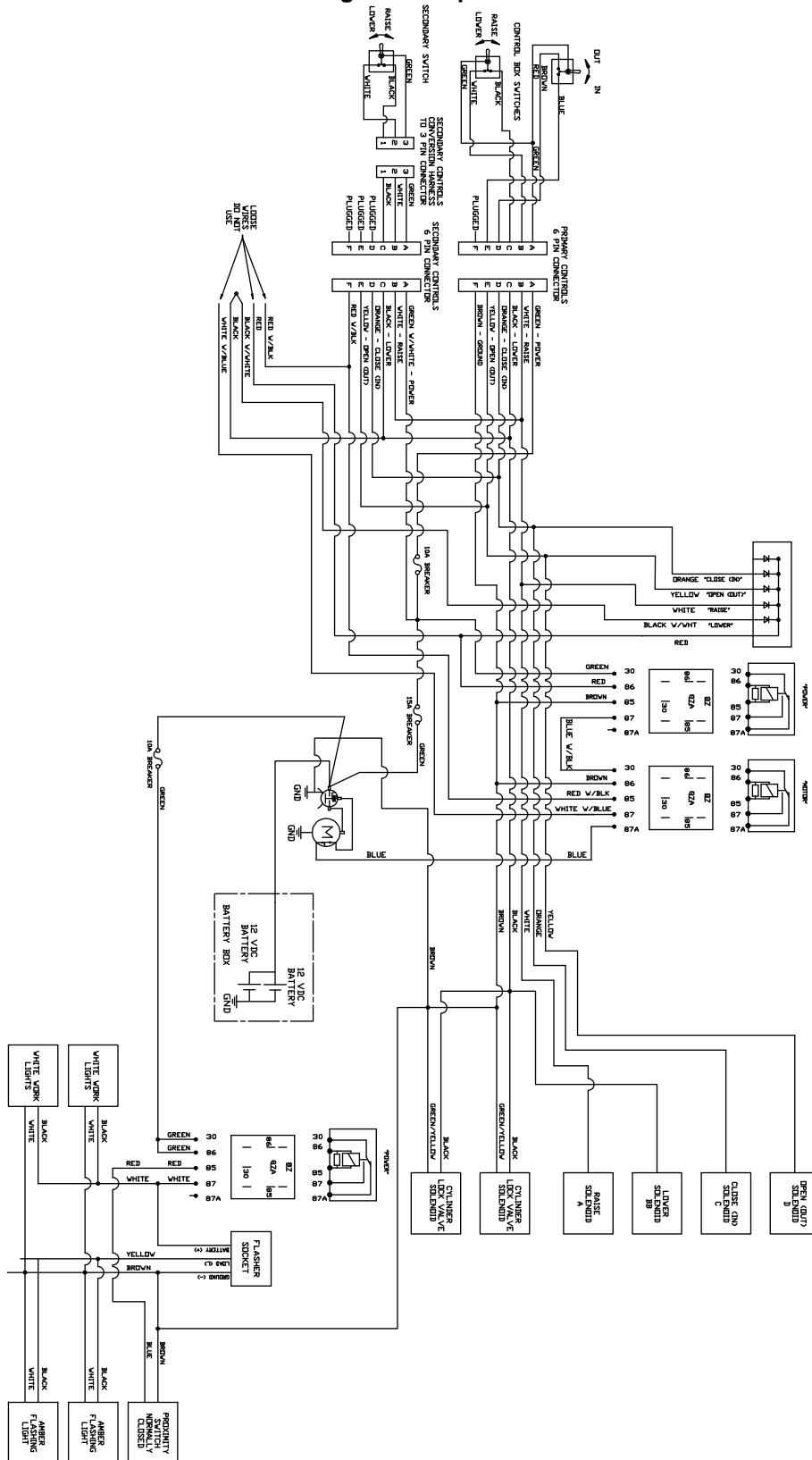
*Lights are Options



Chapter 4 Liftgate Installation

Electrical Schematic – Single Pump Power Down

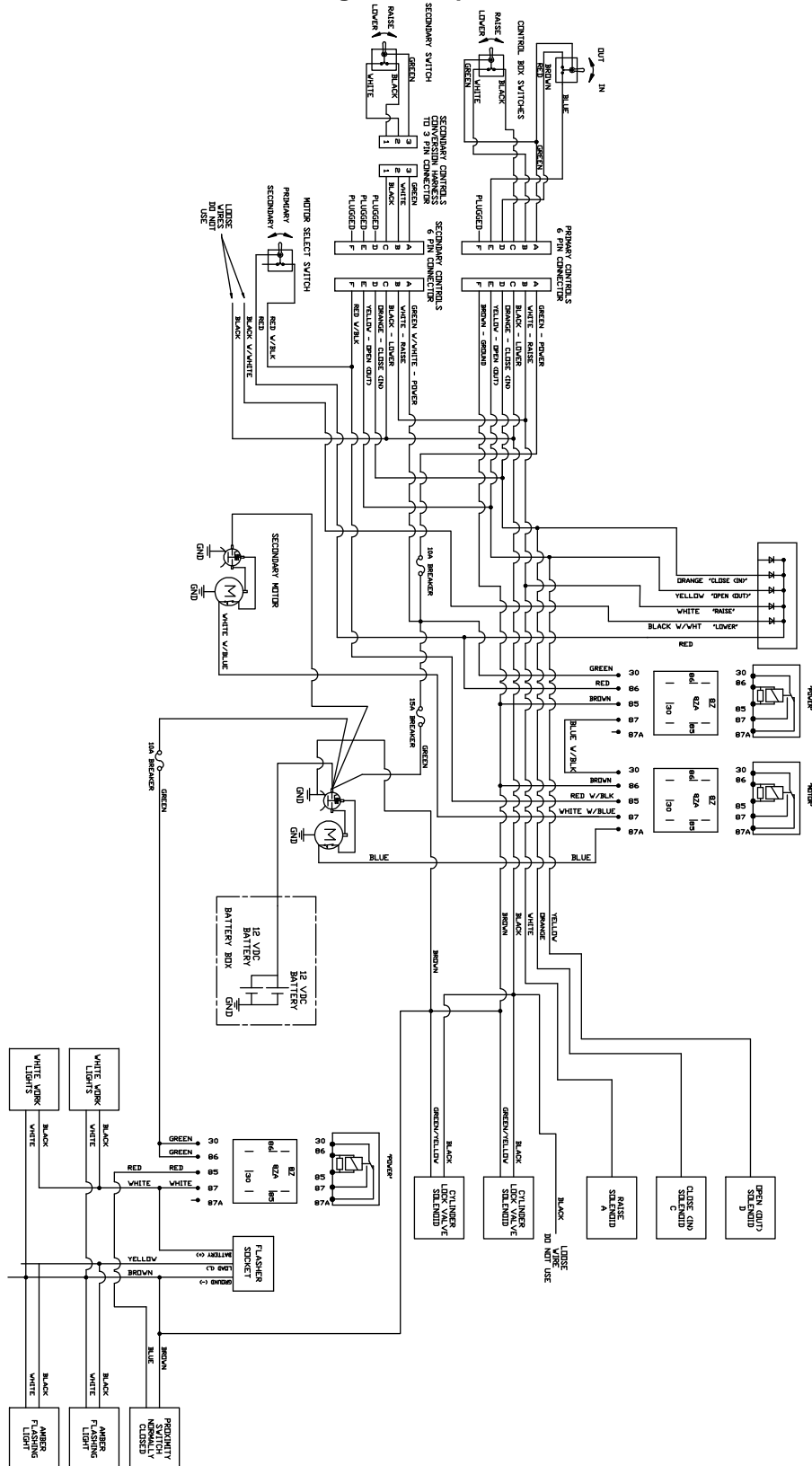
*Lights are Options



Chapter 4 Liftgate Installation

Electrical Schematic – Dual Pump Gravity Down

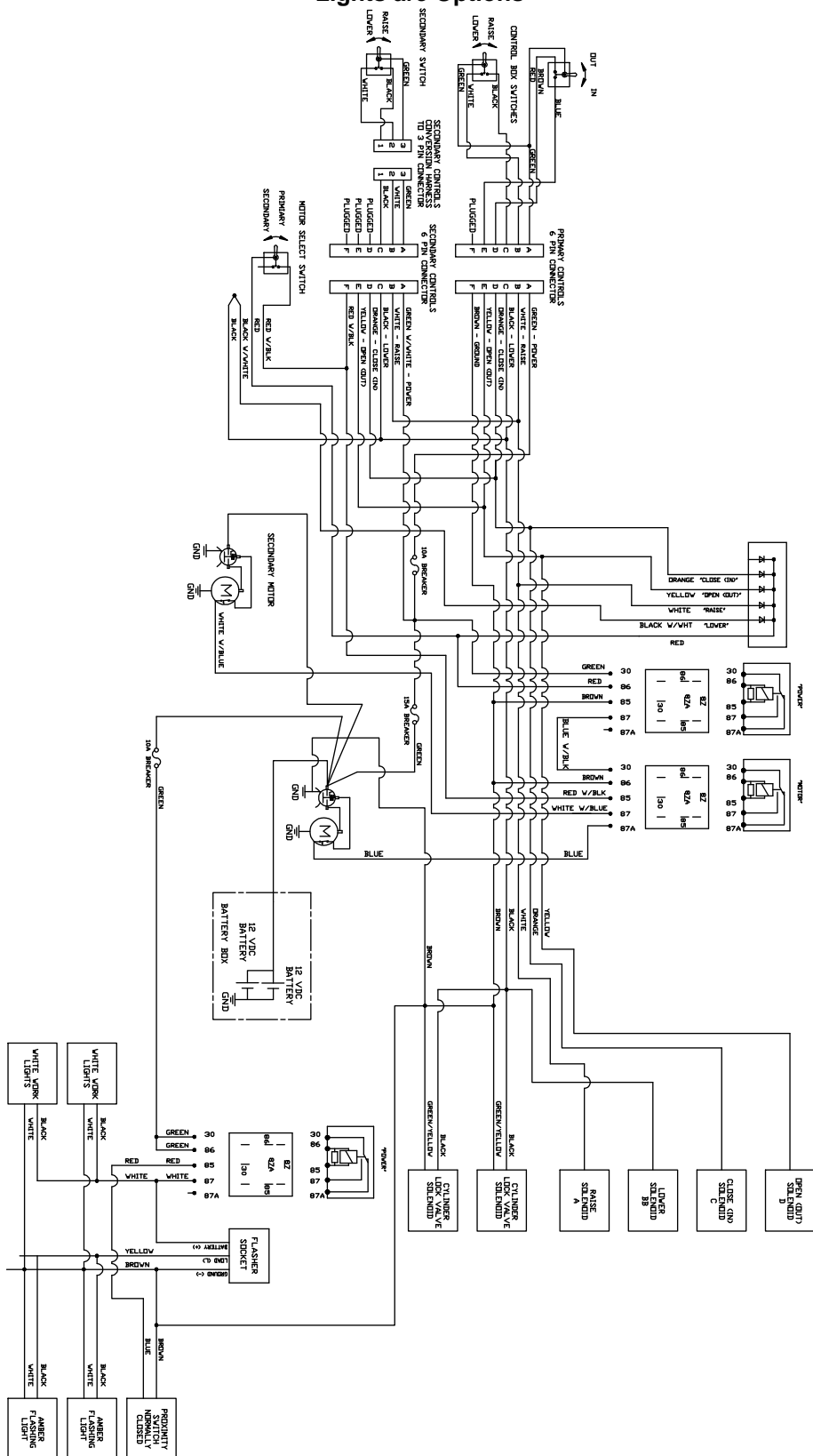
*Lights are Options



Chapter 4 Liftgate Installation

Electrical Schematic – Dual Pump Power Down

*Lights are Options



This page left intentionally blank.

Chapter 5 Placement of Decals


To order complete set of GT-Series liftgate decals, order kits below:

GT-33 = Kit part number 80002238


GT-44 = Kit part number 80002239

GT-55 = Kit part number 80002240

Chapter 5 Placement of Decals

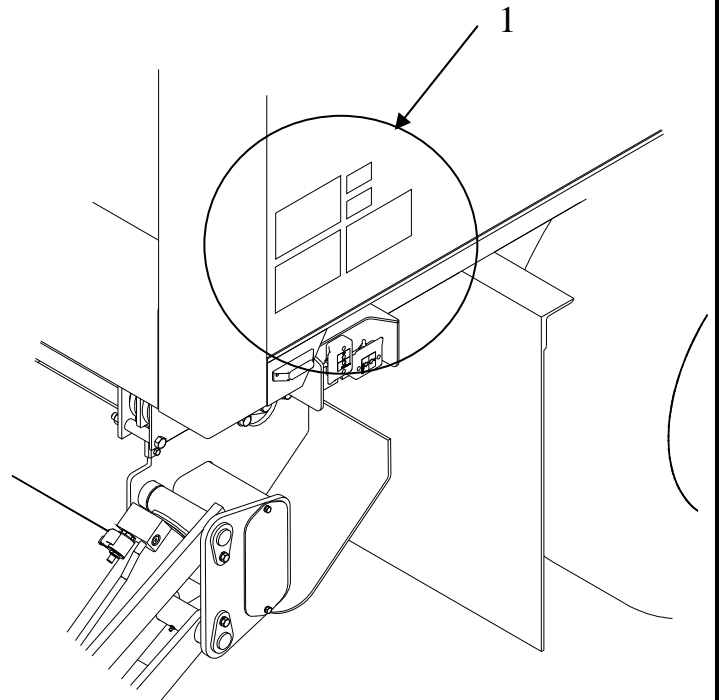
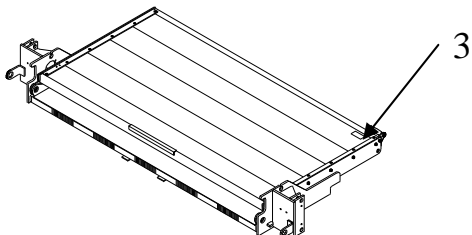
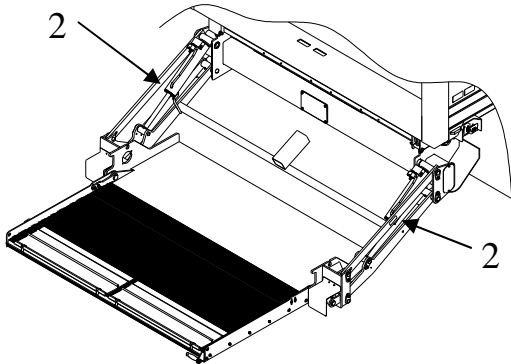
 All decals must be in place and legible or all warranties are void.

DECAL CHART

AREA	DECAL	QTY	PART NUMBER	LOCATION
1	3300 lb Capacity or	1	80100585	Locate in a conspicuous place near controls.  If your liftgate is equipped with dual controls, an additional Safety Instruction decal (80100850) is to be placed in a conspicuous place near the second set of the controls. Refer to the following diagram showing decal locations.
	4400 lb Capacity or		80100587	
	5500 lb Capacity		80101308	
	Operation Decal	1	80101445	
	Safety Decal	1	80100850	
	Stand Clear	1	75089296	
	Hazard	1	80101370	
2	3300 lb Capacity or	2	80100585	Locate on parallel arms
	4400 lb Capacity or		80100587	
	5500 lb Capacity		80101308	
	Stand Clear		75089296	
3	Use Handle Decal	1	75089295	Locate next to handle on platform extension

To maximize decal adhesion to surfaces:

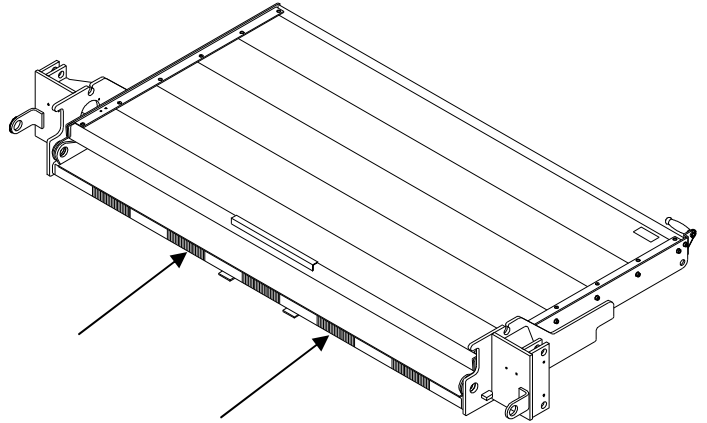
- Surface must be dry and clean
- Firm pressure must be applied to decal
- Minimum surface temperature 65°
Heat gun may be used to heat surface



Chapter 5 Placement of Decals

CONSPICUITY TAPE

Conspicuity tape is attached to Main Deck Tube as shown.



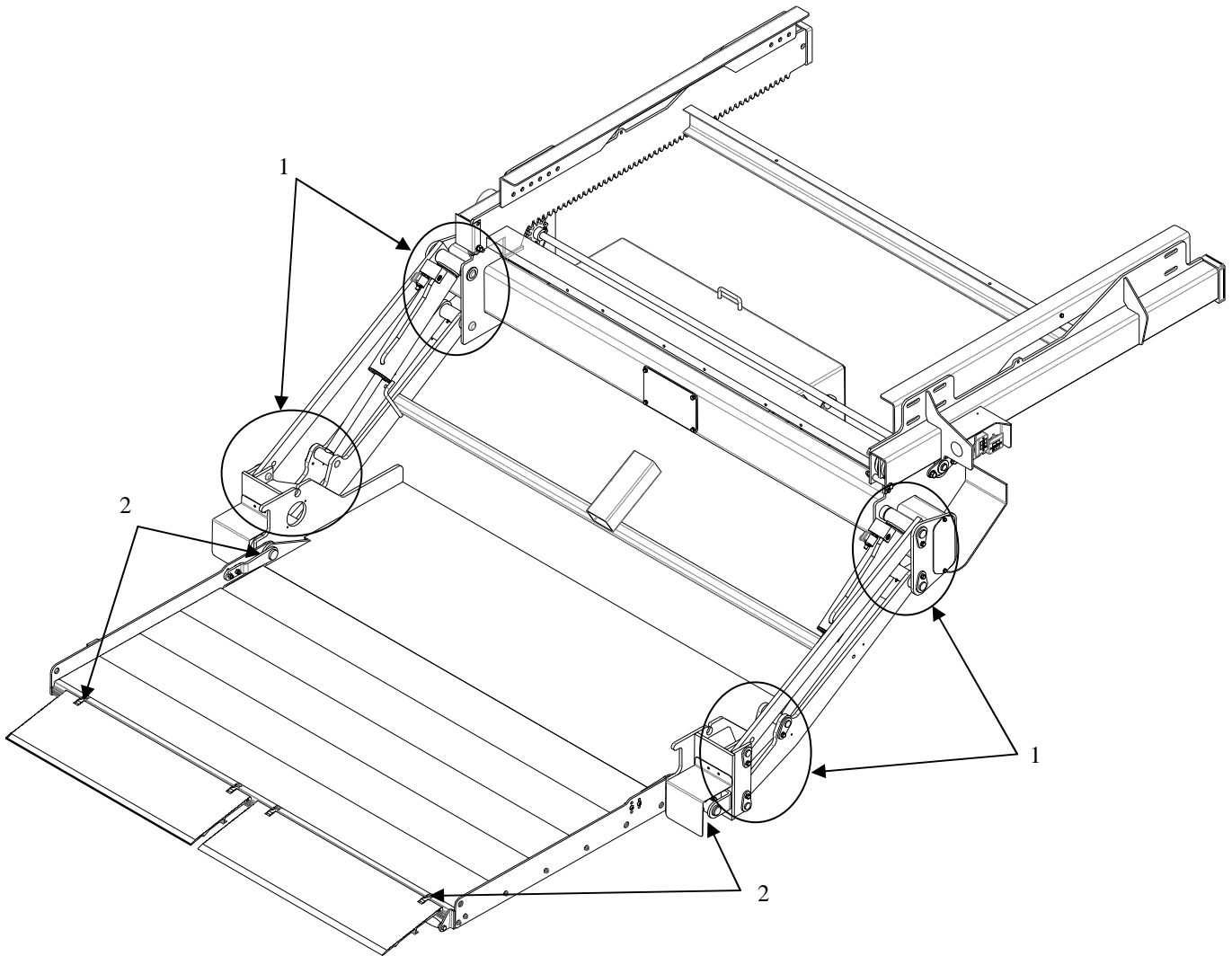
Chapter 6 Lubrication

LUBRICATION INSTRUCTIONS

The points indicated should be lubricated approximately once every three (3) months, or as outlined in the lubrication schedule for heavier usage. If not sure of duty or cycles, always lubricate more frequently.

- 1) Grease all grease fittings in liftarm and cylinders with grease gun.
- 2) Lubricate ramp hinges, deck extension hinges, and springs with a light weight machine oil.

Suggested Minimum Lubrication Schedule (In Days)			
Monthly Cycles	Light Duty	Med. Duty	Heavy Duty
250 Or Less	45	30	21
250-350	30	21	14
350-450	21	14	7
More Than 450	Contact Factory for Instructions		



Ch 7 FINAL INSPECTION SHEET

IMPORTANT:

All of the following are to be checked and verified before installation is complete.

- A.** Are all fasteners securely in place?
- B.** Does liftgate fold and unfold properly?
- C.** Does the platform meet the vehicle properly?
- D.** Is the platform held tightly when stored away?
- E.** Are hydraulic hoses and fittings properly connected with no leaks?
- F.** Do controls operate properly?
- G.** Is battery cable attached and clamped tight?
- H.** Are all electrical connections coated with dielectric grease?
- I.** Are all parts properly lubricated according to the lubrication instructions?
- J.** Is 150 amp circuit breaker installed at battery?
- K.** Is license plate properly installed?
- L.** Are all decals properly in place and legible according to the decal placement drawings?
- M.** Is pump cover installed and securely latched?
- N.** Has hydraulic system been properly bled of all air?
- O.** Is pump reservoir full of oil?
- P.** Is the owner's manual in the vehicle?
- Q.** Is battery cover installed and securely latched?



Do not use liftgate if any of the above are not checked and verified. If you have any questions not covered in this manual, contact your nearest Waltco distributor, or the nearest Waltco factory.

How To Order Parts

Repairs should be made only by authorized mechanics using WALTCO Replacement parts.

When ordering repair or replacement parts, please include all the information asked for below. If this information is not available, a complete written description or sketch of the required part will help WALTCO identify and deliver the needed part to you.

THE FOLLOWING INFORMATION MUST BE INCLUDED:

1. SERIAL NUMBER - [WALTCO liftgate serial numbers can be found on the Specification Tag attached to the mount frame.]
2. MODEL NUMBER
3. CAPACITY
4. PLATFORM SIZE

THEN INCLUDE THE FOLLOWING INFORMATION:

5. PART NUMBERS
6. DESCRIPTION
7. QUANTITY REQUIRED

MAIL, E-MAIL OR PHONE YOUR REQUEST TO:

Waltco Lift Corp
285 Northeast Avenue
Tallmadge, OH 44278
1-800-411-5685
FAX: 1-800-411-5684
E-MAIL: parts@waltco.com

ALL PARTS ARE F.O.B. FROM THE SHIPPING FACTORY

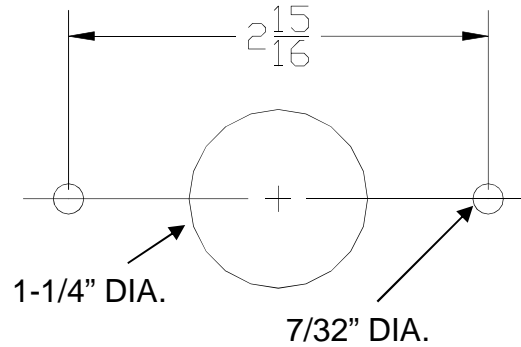
PLEASE NOTE:

To assure you of continuing and effective quality control, our warranty policy permits replacement of hydraulic cylinders, valves and motor pump units when their factory seals are intact. Parts under warranty will be exchanged promptly after careful inspection of the returned assemblies.

Hand Held Remote Installation

DRILL SOCKET HOLES

Using dimension shown, drill mounting holes in desired location for socket.



GR00036

INSTALL SOCKET

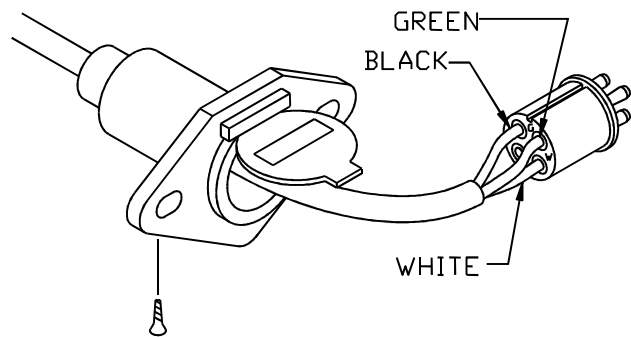
Assemble socket as shown.

Install wires according to colors:

W = White (Raise)

B or BK = Black (Lower)

G = Green (Power)



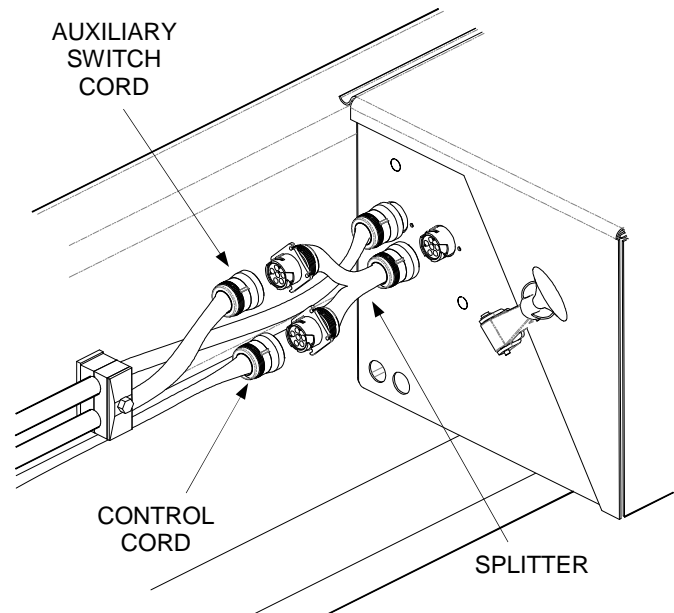
GR02240

CONNECT WIRES TO PUMP UNIT

Route Control Cord to pump enclosure.

First connect Splitter cord assembly to Pump Box connector as shown.

Connect Control Cord connector and the standard auxiliary switch to Splitter as shown.



GR02934

Auxiliary Battery Kit w/Dual Cables

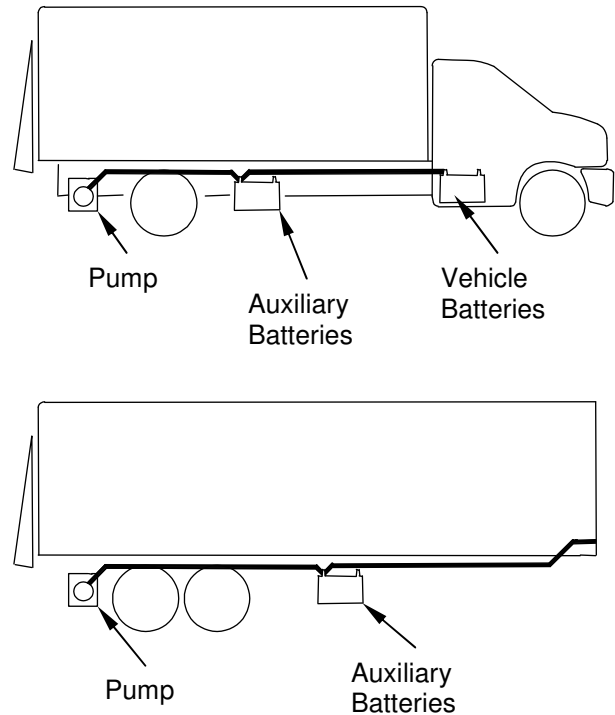
80101569

DETERMINE BATTERY LOCATION AND CABLE ROUTING

Determine where auxiliary battery box will be mounted on the vehicle.

For trucks your installation will use cables supplied with liftgate.

For trailers additional cables are supplied with the trailer kit.

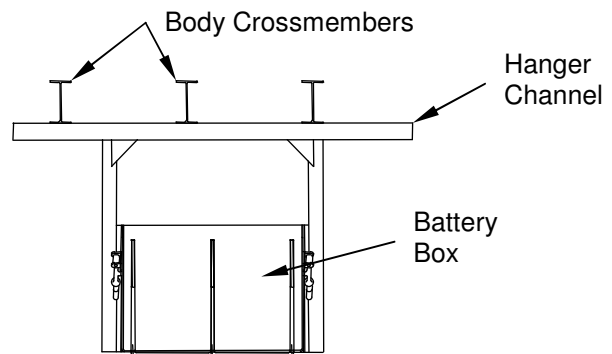


GR02768

Locate battery box in a suitable location under the vehicle body.

Weld hanger channel to body crossmembers.

Install batteries into box.



GR02769

Install #1 ga. power and ground cables to liftgate pump unit per liftgate instructions.

Route cables along chassis frame towards auxiliary battery box, securing them every 24" with cable ties provided.

Do not connect any cables to batteries at this time.



Be certain cables are protected with grommets when passing through metal holes or over sharp edges.

Auxiliary Battery Kit w/Dual Cables

80101569

Cut cables to required length.

Use remaining length of cables to connect from auxiliary batteries to vehicle batteries (for truck applications only, trailers will use additional 0 ga. cables).

Install terminal lugs on ends of cables as shown below.

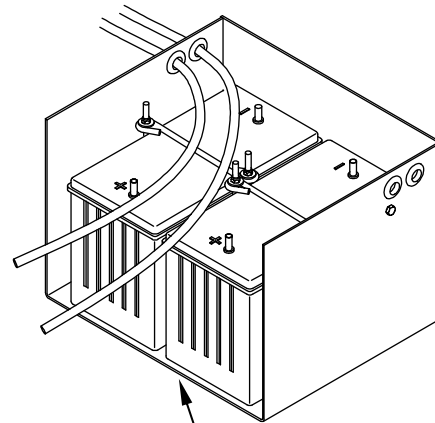


Protect wires from any sharp edges or holes that may abrade insulated covering of wires.



Secure battery cable so it does not come near, or in contact with, other vehicle wiring, fuel lines, brake lines, air hoses, exhaust system, etc.

Install cable lugs as shown below.



AUXILIARY OR VEHICLE BATTERIES

GR01961

INSTALLATION OF TERMINAL LUG

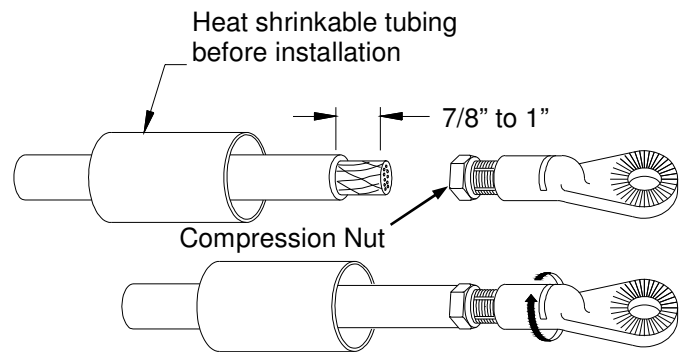
Strip 7/8" to 1" of insulation from end of cable.

Slide heat shrinkable tubing onto cable.

Insert bare wire into compression nut until it seats.

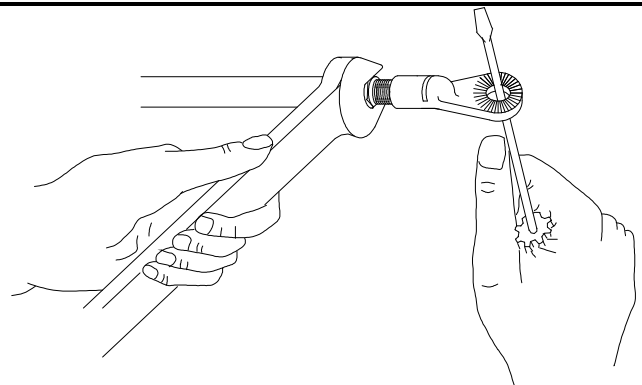
IMPORTANT: Be sure to use correct compression nut, use 1&2 gauge nut for 1 gauge cable, use 0 gauge nut for 0 gauge cable.

Note: Copper wire should be flush with, or slightly past nut



GR00299

Grip nut with wrench and turn terminal until nut seats



GR00300

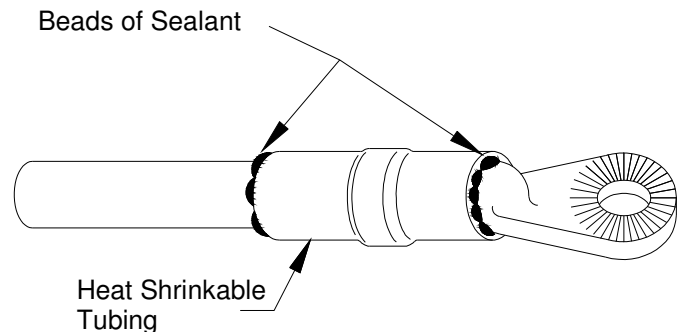
Position heat shrinkable tubing over terminal and end of cable.

Note: Red heat shrink is applied to power cable and black heat shrink to ground.

Shrink tubing using electric heat gun or torch.

Note: To reduce chance of damaging tube and cable, a heat gun is recommended

Apply sufficient heat to produce thin bead of sealant all around tube edges



GR00301

INSTALLATION OF CIRCUIT BREAKER(S)

Batteries on a truck will require circuit breakers at both the auxiliary batteries and the vehicle batteries.

Locate and mount circuit breaker directly to batteries using copper terminal link supplied.

Circuit breakers must be mounted to give good protection against any objects coming into contact with circuit breaker terminals and causing a short. Positions must also be readily accessible to reset breakers.

Note: Circuit Breaker is to rest solidly on battery to prevent vibration during transit.

If unable to connect circuit breaker direct to batteries, an optional 24", maximum length, 2 Ga. battery cable may be used.

Connect cables as shown.

Apply a generous amount of Dielectric Grease to all Positive (Hot) Battery terminals and Circuit Breaker terminals.

Install circuit breaker decal, 80100829, near the circuit breaker.

For trucks, use remaining length of cables supplied with liftgate, and route from auxiliary batteries to vehicle batteries.

Install terminal lugs on cables as required per previous instructions.

Install circuit breaker and cables to vehicle batteries per previous instructions.



Protect wires from any sharp edges or holes that may abrade insulated covering of wires.

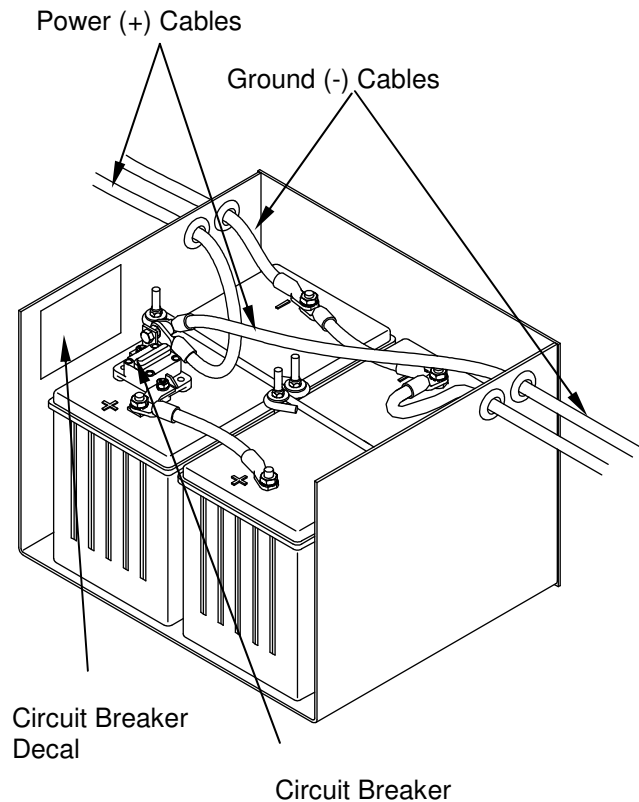


Secure battery cable so it does not come near, or in contact with, other vehicle wiring, fuel lines, brake lines, air hoses, exhaust system, etc.

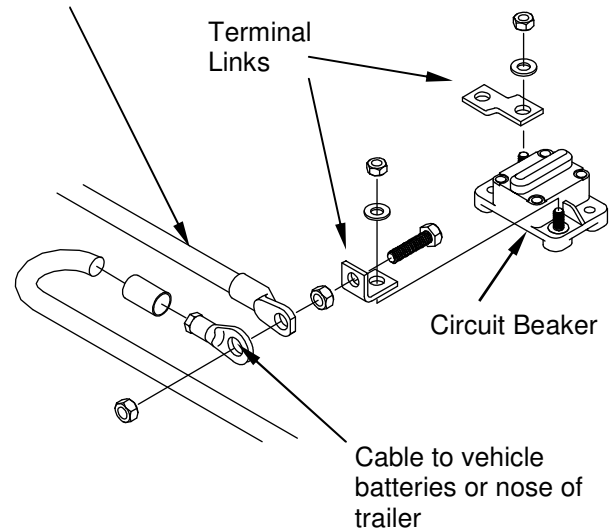
IMPORTANT:

DO not operate liftgate until Mounting Bar has been removed from liftgate.

See below for trailer applications.



Cable from liftgate



GR01962

For trailer applications with dual pole socket:

Using 0 ga. cables, supplied with trailer kit, feed each end through battery-box wall and install a compression terminal on both red and black cables.

Do not connect any cables to batteries at this time.

Run cables from battery box to trailer nose, securing them every 24" with cable ties.

For trailer applications with dual pole socket:

Install dual pole socket in nose of trailer. Drill 1-3/4" hole in trailer and mount with hardware provided.

Route cables from auxiliary batteries to nose of trailer.

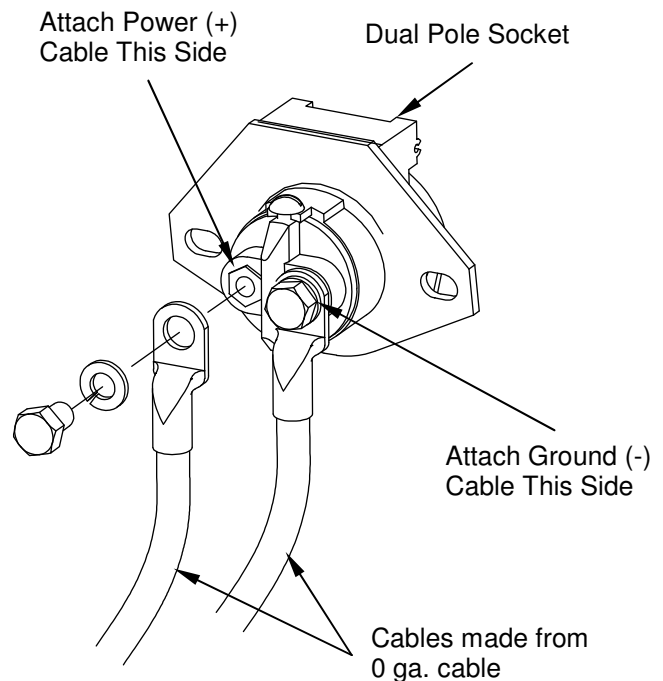
Install cables to socket as shown.

Apply a generous amount of Dielectric Grease over cable terminals.

IMPORTANT: Be sure to orientate cables as shown, power (+) to the left, ground (-) to the right.



Power (charge) cable from tractor batteries to trailer must also be protected with a 150 amp circuit breaker at the tractor batteries.



GR02770

For trailer applications with single pole socket:

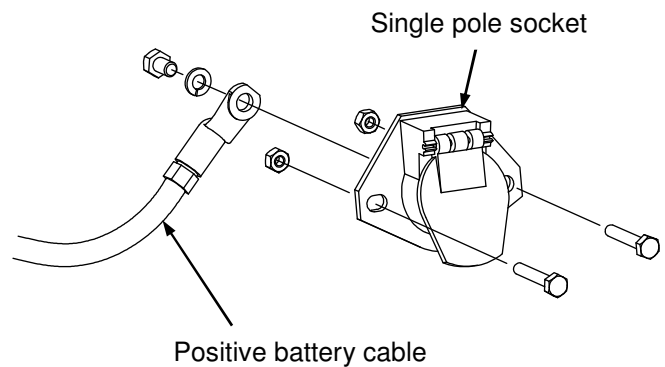
Using 0 ga. cable, supplied with trailer kit, feed the end through battery-box wall and install a compression terminal on that end.

Do not connect any cables to batteries at this time.

Run cable from battery box to trailer nose, securing them every 24" with cable ties.

For trailer applications with single pole socket:

Drill 1-3/4" hole in nose of trailer for trailer socket.
Mount socket to trailer with bolts and nuts provided.
Attach cable to back of socket with bolt provided.
Apply a generous amount of Dielectric Grease over cable terminal.

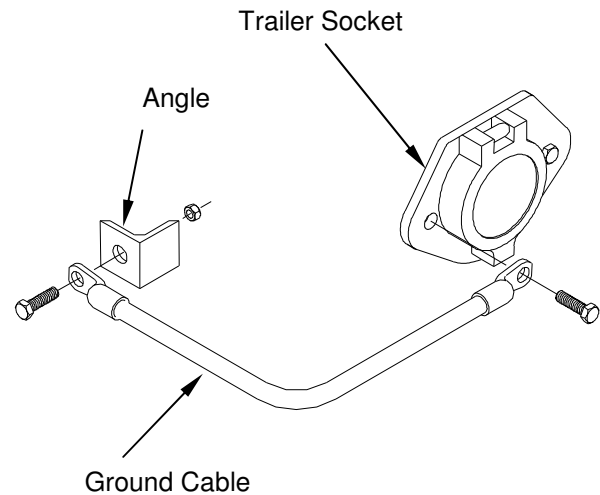


GR02739

Ground trailer socket to main structure of trailer.

Use the 18" ground cable, supplied, and bolt it to the trailer socket and suitable structure on the nose of the trailer.

An angle has been provided, it can be used by welding it to the crash plate, or other suitable structure.



GR01414

For all trailer applications:

After single or dual pole socket is installed:

Connect cable(s) to terminals in the battery box as shown on page 4; using a 150 amp circuit breaker to protect the charge circuit.

EO6860
Rev 03
3-25-13



Every vehicle that has a WALTCO Liftgate must have legible **WARNING AND OPERATION DECALS** clearly posted on the vehicle and an **OWNER'S MANUAL** in the vehicle at all times as a guide for proper operation and maintenance.

Additional **WARNING DECALS**, **OPERATION DECALS** and **OWNER'S MANUALS** can be obtained from **WALTCO LIFT CORP.**

NOTE:

**When ordering, give model
and serial number of the liftgate.**

IMPORTANT

WARNING

Improper operation and maintenance of this liftgate could result in severe personal injury or death.

Read and understand the contents of this manual and all warning and operation decals before operating and/or performing maintenance on this liftgate.

For SAFETY information on this liftgate see Chapter 1 of this manual