



**Omaha Standard**

# PLATFORMS AND STAKE BODIES



For the best in quality and durability,  
insist on Omaha Standard

**America's Standard In Truck Bodies**



# HEAVY DUTY PLATFORMS

## Heavy Duty Platforms

For medium and heavy duty commercial and agricultural uses.

The heavy-duty welded construction, high-grade materials and user friendly design of every Omaha Standard platform insure value and durability for years to come.

Choice of pressure treated yellow pine, apitong hardwood, treadplate steel, smooth steel, or steel over wood floor.

**E-Coat Finish:** Exclusive high gloss black acrylic electrocoat topcoat assures unmatched coverage and corrosion resistance

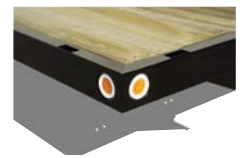
Cross members on 14 foot and longer platforms are on 12-inch centers.

Heavy gauge, high strength steel outtrail and cross members combine with structural steel channel long members for the strongest platform available.

96-inch wide standard, 102-inch wide available.

11 gauge high strength rollformed steel side, front and rear outtrail.

Recessed light holes provide superior protection for lighting. All lighting meets FMVSS 108 requirements.



Recessed rubber mounted lights are protected from impact and weather.

# SUPER DUTY PLATFORMS

## Super Duty Platforms

Structural steel construction for the heaviest commercial hauling jobs. These are the most durable platforms you can buy.

**E-Coat Finish:** Exclusive high gloss black acrylic electrocoat topcoat provides unmatched coverage and corrosion resistance

**Long member heights for Heavy Duty and Super Duty platforms:**

8'6"	through	9'6"	= 4"
10'6"	through	12'6"	= 6"
14'6"	through	20'6"	= 7"
22'6"	through	24'6"	= 8"

6-inch structural channel side and rear outtrail.

4-inch structural channel front outtrail.

Choice of pressure treated yellow pine, apitong hardwood, treadplate steel, smooth steel, or steel over wood floor.

Exterior heavy duty 2x4 stake pockets.

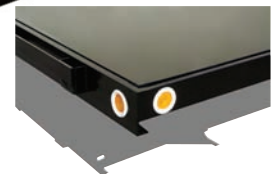
4-inch structural channel cross sills are on 12-inch centers.

Heavy duty 3/8 by 2 1/2 inch banding rail for securing cargo.

96-inch wide standard, 102-inch wide available.

Full width 7 gauge buckplate.

All lighting meets FMVSS 108 requirements.



Recessed rubber mounted lights are protected from impact and weather.

Omaha Standard reserves the right to modify, change or revise published specifications and furnish products so altered without prior notice.

**All Omaha Standard platforms, bulkheads and side assemblies are covered by a 3-year/36,000 mile limited warranty.**

## PLATFORM DIMENSIONS AND WEIGHTS\*

Platform Dimensions	Heavy Duty Platforms				Super Duty Platforms		
	Wood	Smooth Steel	Tread-Plate 1/8"	Tread-Plate 3/16"	Wood	Smooth Steel	Tread-Plate 1/8"
8'6" X 82"	524	695	718	847	—	—	—
8'6" X 96"	561	751	778	928	—	—	—
9'6" X 82"	627	839	870	1,038	—	—	—
9'6" X 96"	755	872	826	1,137	—	—	—
10'6" X 96"	836	964	918	1,258	1,270	1,480	1,451
12'6" X 96"	984	1,137	1,076	1,563	1,510	1,762	1,728
14'6" X 96"	1,168	1,346	1,280	1,951	1,750	2,044	2,005
15'6" X 96"	1,301	1,489	1,418	2,087	—	—	—
16'6" X 96"	1,433	1,637	1,561	2,224	1,990	2,326	2,281

Platform Dimensions	Heavy Duty Platforms				Super Duty Platforms		
	Wood	Smooth Steel	Tread-Plate 1/8"	Tread-Plate 3/16"	Wood	Smooth Steel	Tread-Plate 1/8"
18'6" X 96"	1,576	1,724	1,729	2,333	2,230	2,608	2,378
20'6" X 96"	1,744	1,816	1,902	2,766	2,470	2,890	2,834
22'6" X 96"	1,999	2,090	2,183	3,110	2,710	3,170	3,110
24'6" X 96"	2,270	2,310	2,356	3,390	2,955	3,460	3,392
26'6" X 96"	2,524	2,596	2,601	3,560	3,210	3,750	3,674

\*All weights are shown in pounds and are approximate.

For a given steel over wood floor platform add the following weight per body foot of length to weight of same length wood floor platform to arrive at approximate weight:

7 ga. - 60 lbs. ■ 10 ga. - 45 lbs. ■ 1/8" treadplate - 49 lbs. ■ 3/16" treadplate - 70 lbs.

### Steel Stake Racks

Steel stake racks are available in 28 and 40-inch heights. Heavily corrugated roll formed 16 gauge slats are welded to 13-gauge hat section roll formed stakes for outstanding strength and durability. The slats feature hemmed edges and rounded corners for safer handling. Sure-close spring tension rack connectors and rack hold downs keep the stake racks solidly in place yet allow for easy one-man removal. Painted with a high gloss black acrylic electrocoat topcoat.

## SIDE ASSEMBLIES

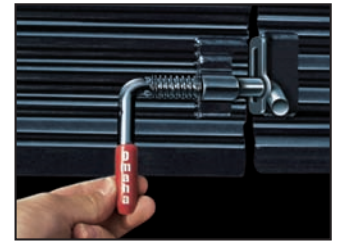


### Exclusive E-Coat Topcoat Provides Unmatched Paint Coverage and Corrosion Resistance

All Omaha Standard platforms, racks, sides, bulkheads and toolboxes go through an automotive 13-stage electrocoat dip-tank finishing system. After a thorough multi-tank cleaning process the products receive a zinc phosphate precoat and are then immersed in an acrylic electro-deposition tank where a high gloss black acrylic topcoat is charged onto the products. The products are oven cured to fully crosslink and cure the electrocoat topcoat providing an extremely durable and rust-resistant finish.



Optional **swing-out rear rack sections** will save you time and effort when loading and unloading. Just swing open instead of lifting the rack sections in and out. All steel construction including corner posts.



Sure Close Rack Connectors



Rack Hold Downs



### Solid Steel Stake Sides

Solid steel stake sides for Heavy Duty Platforms are available in 40-inch and 52-inch heights with two section full opening Econo-Rear Doors. The front and sides are constructed from 14-gauge steel. Front and side sections are also reinforced with 13-gauge hat section stakes on 24-inch centers. Solid sides are ideal for confined cargo or bulk hauling. Painted with a high gloss black acrylic electrocoat topcoat.

**All Omaha Standard platforms, bulkheads and side assemblies are covered by a 3-year/36,000 mile limited warranty.**

Omaha Standard reserves the right to modify, change or revise published specifications and furnish products so altered without prior notice.

# BULKHEADS

## For Heavy Duty and Super Duty Platforms

40"x96" Heavy Duty Drop-In Bulkhead.

Also available in the following sizes: 34"x82", 34"x96", 40"x96", 44"x96", 48"x96", 48"x102", 56"x96" and 56"x102".



### Heavy Duty Drop-In Bulkhead

- For Heavy Duty Platforms
- 12-gauge skin sheet with corrugations for added strength. One piece construction.
- Skin sheet welded to 13-gauge hat section stakes
- 10-gauge side support gussets
- Punched hole window
- Painted with a high gloss black acrylic electrocoat topcoat.

**Options:** ■ Cab shield  
■ No window

**Note:** Also available with no side gussets.  
Recommended for use only with stake racks.



40" x 96" Weld-On Knee-Braced Bulkhead.

Also available in the following sizes: 34"x96", 40"x102", 44"x96", 44"x102", 48"x96", 48"x102", 56"x96" and "56"x102".

### Heavy Duty Weld-On Knee-Braced Bulkhead

- For Heavy Duty Platforms
- 12-gauge skin sheet with punched hole window and formed one-piece construction.
- Inner stakes are 4-inch structural channels welded directly to platform long members.
- Corner posts are gusseted to side rails for added strength.
- Full-access design allows material to be loaded flush with the front of the platform.
- Painted with a high gloss black acrylic electrocoat topcoat.

**Options:** ■ Cab shield  
■ No window



40"x96" Super Duty Weld-On Bulkhead.

Also available in the following sizes: 40"x102", 44"x96", 44"x102", 48"x96", 48"x102", 56"x96" and 56"x102".

### Super Duty Weld-On Bulkhead

- For Super Duty Platforms
- 12-gauge skin sheet with punched hole window and formed one-piece construction.
- 4-inch structural channel inner and outer stakes for rigid support and strength.
- Inner stakes are welded directly to platform long members.
- Painted with a high gloss black acrylic electrocoat topcoat.

**Options:** ■ Cab shield  
■ No window

48"x96" Heavy Duty Weld-On "Lumberyard"



Also available in the following sizes: 40"x96", 40"x102", 44"x96", 44"x102", 48"x102", 56"x96" and 56"x102".

### Heavy Duty Weld-On "Lumberyard" Bulkhead

- Available for Heavy Duty and Super Duty Platforms.
- 12-gauge skin sheet with punched hole window.
- 3/2-inch diameter tube welded to the top of bulkhead supports longer lengths of lumber and trusses.
- Heavy 3/8-inch treadplate side gussets welded to platform and bulkhead support heavy loads.
- 3/8-inch round steel rod welded to edge of treadplate gussets protects cargo from damage.
- 4-inch structural channel inner and outer stakes provide rigid support and strength.
- Inner stakes are welded directly to platform long members.
- Painted with a high gloss black acrylic electrocoat topcoat.

**Options:** ■ Cab shield  
■ No window

**All Omaha Standard platforms, bulkheads and side assemblies are covered by a 3-year/36,000 mile limited warranty.**

Omaha Standard reserves the right to modify, change or revise published specifications and furnish products so altered without prior notice.

**All bulkheads shown in prime. Black Paint Standard.**

## RACK SELECTIONS AND WEIGHTS\*

PLATFORM DIMENSIONS	14" CONTRACTOR	28" STEEL STAKE RACKS	40" STEEL STAKE RACKS	40" SOLID STEEL SIDES	52" SOLID STEEL SIDES
8'6" X 82"	325	248	320	—	—
8'6" X 96"	338	256	340	—	—
9'6" x 82"	354	262	349	—	—
9'6" x 96"	368	275	364	520	—
10'6" x 96"	388	286	384	543	733
12'6" x 96"	404	319	425	590	880

PLATFORM DIMENSIONS	14" CONTRACTOR	28" STEEL STAKE RACKS	40" STEEL STAKE RACKS	40" SOLID STEEL SIDES	52" SOLID STEEL SIDES
14'6" x 96"	418	352	470	635	965
16'6" x 96"	438	384	512	690	1055
18'6" x 96"	464	417	558	745	1140
20'6" x 96"	480	451	600	780	1225
22'6" x 96"	—	484	646	—	—
24'6" x 96"	—	517	688	—	—

\* All weights are shown in pounds and are approximate.

# CONTRACTOR BODIES

For hauling equipment and materials to and from the job site the versatility and durability of the Omaha Standard Contractor Body make it your ideal choice. The Contractor gives you considerably more load space and hauling flexibility than a conventional dump body. The Contractor Body features 14-inch reinforced sides and is available in lengths of 8' 6" through 20' 6". Sides are constructed with a 12-gauge skin sheet welded to 13-gauge hat section stakes. The Contractor features a rugged hinged tailgate constructed from a 12-gauge skin sheet welded to 12-gauge support posts. The three position tailgate and heavy-duty 40-inch bulkhead with punched hole window are standard.

Add an Omaha Standard low profile scissor hoist or "Olympic" telescopic hoist and you have the ideal unit to handle all your hauling requirements. Painted with a high gloss black acrylic electrocoat topcoat.



**Note:** Drop side models are available on Heavy Duty Omaha Standard "Eagle" Dump Bodies.

# "STRONG BOX" UNDERBODY TOOLBOXES

Strong and weather resistant with key lockable stainless steel rotary paddle latches. All **galvannealed steel** construction. Convenient, secure storage for tarps, chains, etc. Available in gray epoxy electrocoat primer or painted with a high gloss black acrylic electrocoat topcoat. Omaha Standard toolboxes carry a 6-year limited warranty against rust-through or failure of door hinges, latches or lock cylinders.

MODEL	LENGTH	HEIGHT	DEPTH	APPROX. WT.	CAPACITY
U24-P	24"	18"	18"	59 lbs.	4.5 CU. FT.
U24-B	24"	18"	18"	59 lbs.	4.5 CU. FT.
U30-P	30"	18"	18"	74 lbs.	5.6 CU. FT.
U30-B	30"	18"	18"	74 lbs.	5.6 CU. FT.
U36-P	36"	18"	18"	89 lbs.	6.8 CU. FT.
U36-B	36"	18"	18"	89 lbs.	6.8 CU. FT.
U48-P	48"	18"	18"	115 lbs.	9.0 CU. FT.
U48-B	48"	18"	18"	115 lbs.	9.0 CU. FT.
U60-P	60"	18"	18"	143 lbs.	11.3 CU. FT.
U60-B	60"	18"	18"	143 lbs.	11.3 CU. FT.



Toolboxes shown with optional T-handle twist latches

**All Omaha Standard platforms, bulkheads and side assemblies are covered by a 3-year/36,000 mile limited warranty.**

Omaha Standard reserves the right to modify, change or revise published specifications and furnish products so altered without prior notice.

# CONVERSION HOISTS

Omaha Standard offers 16 different models of quality built hoists with capacities from 5 tons to 40 tons, for bodies from 8 feet to 26 feet. We're the people who set the standard in conversion hoists.

Critical hoist components are fabricated from special high-strength steel. All cylinders are pressure-tested and cycle-tested before installation. Available with gear or electric/hydraulic pumps.

Piston rods and Olympic series telescopic cylinder stages are hard chromed and high polished to insure long cylinder life. An Omaha Standard durable hoist combined with an Omaha Standard body offer a total working unit superior to any on the market.



HOIST SPECIFICATIONS				
Model	Body Lengths	CA or CT Truck Dimensions	Capacities (Tons)	Weight (lbs.)
415 DH	8'6" to 12'6"	60" CA to 84" CA	5.5 to 12.9	397
415 SF	8'6" to 12'6"	60" CA to 84" CA	5.5 to 12.9	537
515 DH	8'6" to 14'6"	60" CA to 108" CA	5.5 to 15.9	403
515 SF	8'6" to 14'6"	60" CA to 108" CA	6.8 to 15.9	543
519 DH	8'6" to 14'6"	60" CA to 120" CA	6.4 to 22.9	601
519 SF	8'6" to 14'6"	60" CA to 120" CA	6.4 to 22.9	751
520 DH	8'6" to 16'6"	60" CA to 138" CA	8.3 to 18.9	659
520 SF	8'6" to 16'6"	60" CA to 138" CA	9.0 to 18.9	809
625 DH	14'6" to 18'6"	108" CA to 144" CA	11.3 to 22.2	808
630 DH	12'6" to 18'6"	108" CA to 168" CA	12 to 23.4	864
5530DH	16'6" to 20'6"	132" CT to 174" CT	14.7 to 33.4	1254
Olympic 110	13'6" to 19'6"	120" CA to 150" CA	15.7 to 24.7	692
Olympic 128	16'6" to 20'6"	126" CT to 174" CT	18.2 to 29.6	857
Olympic 144	18'6" to 22'6"	156" CT to 204" CT	25.1 to 36.7	1002
Olympic 144 HD	16'6" to 24'6"	120" to 222" CT	20.3 to 45.2	1050
Olympic 180	22' to 26'	198" CT to 246" CT	25.5 to 46.8	1132

"DH" = Drop Hinge, Low Profile "SF" = Subframe Model

**NOTE:** All lifting capacity ratings and gross load (body and cargo) are based on proper body overhang, mounting distance and level load and assume 3" clearance between front of body and back of cab with a rear hinge location 32" behind center line of rear axle for single axle trucks and 44" behind center line of trunnion for tandem axle trucks.

**Caution:** The combined weights of the truck chassis, hoist, truck body, accessories and cargo must not exceed the gross vehicle weight rating (GVWR) of the truck.

**NOTE:** For hoist applications other than shown in above table, consult the factory.

Omaha Standard hoists are covered by a 3-year/36,000 mile limited warranty. Additionally, the Olympic hoist mainframe carries an extended 7-year limited warranty.

## Omaha Standard's E-Coat System

**If Rust is the Problem... E-Coat is the Solution!**

All Omaha Standard platforms, stake bodies, toolboxes, and hoists are e-coated to make them more durable and corrosion resistant giving you more value for your money.



In the interest of product improvement, Omaha Standard Inc. reserves the right to modify, change or revise design and specifications and furnish product so altered without prior notice.

PSB 0806



U.S. Patent No. 4,148,528 and No. 4,592,593

The high capacity Olympic Series Hoists remain the standard for torsional stability. They provide remarkable resistance to body twist and upset loads. Specifically designed to counter off-center loads and non-level dumping conditions, the patented Olympic design has proven itself on the job over and over again. There's an Olympic Series hoist to fit any working package you require.

### Low Profile Scissor Hoists

U.S. Patent No. 5,074,622

Omaha Standard offers single and twin cylinder scissor hoists that can be mounted on bodies ranging from 8'6" to 20'6".

*Low Profile Scissor Hoist*

### Subframe Scissor Hoists

U.S. Patent No. 5,074,622

Fast and easy to install, these units are ready to attach to the truck frame. The low 6 1/4 inch mounting heights can be used under bodies with 4 inch high long members.



Sold and Serviced By