

# LIGHT DUTY SERIES

## C2 Stakebed & Van Body

**MAXON®**



### C2 SPECIFICATIONS

Introducing the all-new C2 just like the liftgates you know, but at significantly reduced cost. The C2 provides direct lifting with level ride and ramp options that increase loadable platform depth.

- C2 liftgates are built with high performance and low maintenance in mind
- Oversized, fully enclosed pump and motor assembly helps ensure increased life and less downtime
- Maintenance-free bearings reduce the need for service

Model No.*	Load Area	Ramp	Travel	Weight
Steel Platform				
C2-92-1650 TP35	87" X 35"	6"	30" to 50"	628 lbs
C2-92-1650 TP41	87" X 41"	6"		655 lbs
Aluminum Platform				
C2-92-1650 EA37	87" X 37"	6"	30" to 50"	561 lbs
C2-92-1650 EA41	87" X 41"	6"		577 lbs
Grip Strut Platform				
C2-92-1650 GS33	87" X 33"	6"	30" to 50"	628 lbs
Bar Grate Platform				
C2-92-1650 BG33	87" X 33"	6"	30" to 50"	628 lbs

\*Available additional Body sizes: 90", 85", 80", 75" (corresponds to model designations 87", 81", 78", and 73"). Prices are the same as the 92" models.



Maxon Lift Corp. 11921 Slauson Ave., Santa Fe Springs, CA 90670  
800.227.4116 Fax 888.771.7713, [www.maxonlift.com](http://www.maxonlift.com)

# LIGHT DUTY SERIES

## C2 Stakebed & Van Body

**MAXON®**

### C2 standard features

- Dual hydraulic lifting cylinders
- Maintenance-free components
- Protected / recessed main control with time-out feature
- Steel or aluminum platforms
- Fully-enclosed hydraulic system
- Patent Pending Pre-punched Holes for Camera/Sensors
- Gravity down only

### Optional features

- Light Kits
- Remote Pendant Control
- Rubber Platform Protection Bumpers
- Tire Rack Kit



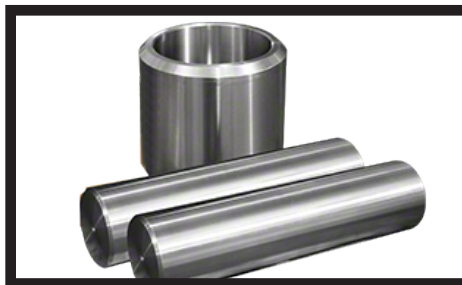
### Enclosed Pump & Motor Assembly

The C2 pump and motor assembly is fully enclosed and shielded from the elements.



### Main Control with Time-Out Feature

A timed toggle control prevents unauthorized use. It automatically deactivates 90 seconds after operation.



### Maintenance Free Pins & Bushings

Maintenance free pins and bushings allow for years of maintenance free service.



### Power Cable with Full Length Ground

The dedicated ground cable helps to get the maximum lifespan out of the vehicles battery.

**Distributed by:**

M-213-0520



Maxon Lift Corp. 11921 Slauson Ave., Santa Fe Springs, CA 90670  
800.227.4116 Fax 888.771.7713, [www.maxonlift.com](http://www.maxonlift.com)