

Installation & Operator's Manual

LS12H Liquid Spray System 120 Gallon Tank

1. Locate the position on the truck frame you will be mounting the reservoir frame and secure in place.
2. Install the reservoir in the frame so the ports on the preferred side of the truck. (You may need to remove the fittings, install the tank, and reinstall.)
3. Locate the position where you will be mounting the Enclosure mounting plate. *Note: The included mounting plate is predrilled to match the Enclosure mounting holes. A recommended position to mount this plate is on the side of the reservoir's frame. Once mounted the plate may be trimmed if desired.*

WARNING

Two inside bolts must be installed through the internal enclosure plate and mounting bracket in order to secure the assembly.

4. Use the included hardware to mount the Enclosure. All (4) mounting holes on Enclosure's flanges must be used along with (2) internal mounting holes.
5. Plumb: Reservoir, ball valve, check valve, filter, pump enclosure and spray nozzles according to plumbing schematic, Fig 3. Use only Loctite™ #30534 or Permatex™ #2 thread sealants. **DO NOT USE TEFLON TAPE**
6. Refer to Fig. 2 for flow adjustment

Fig. 1

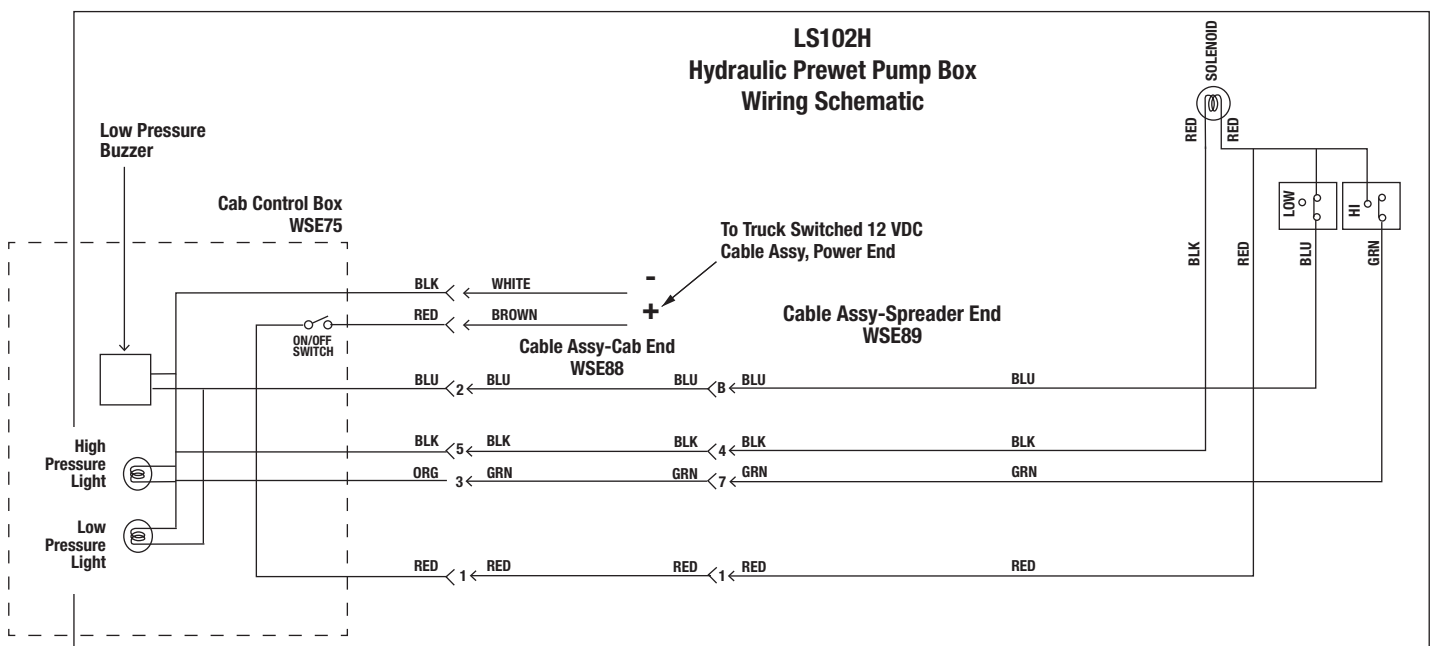


Fig. 2 - Hydraulic Schematic

NOTE: It takes five revolutions of the black dial on the WSE87 to fully open it. This should be the factory preset. There is also a jam nut that should be tightened to prevent loosening in shipment. The pre-wet pump delivers 4.5GPM when the valve is fully opened.

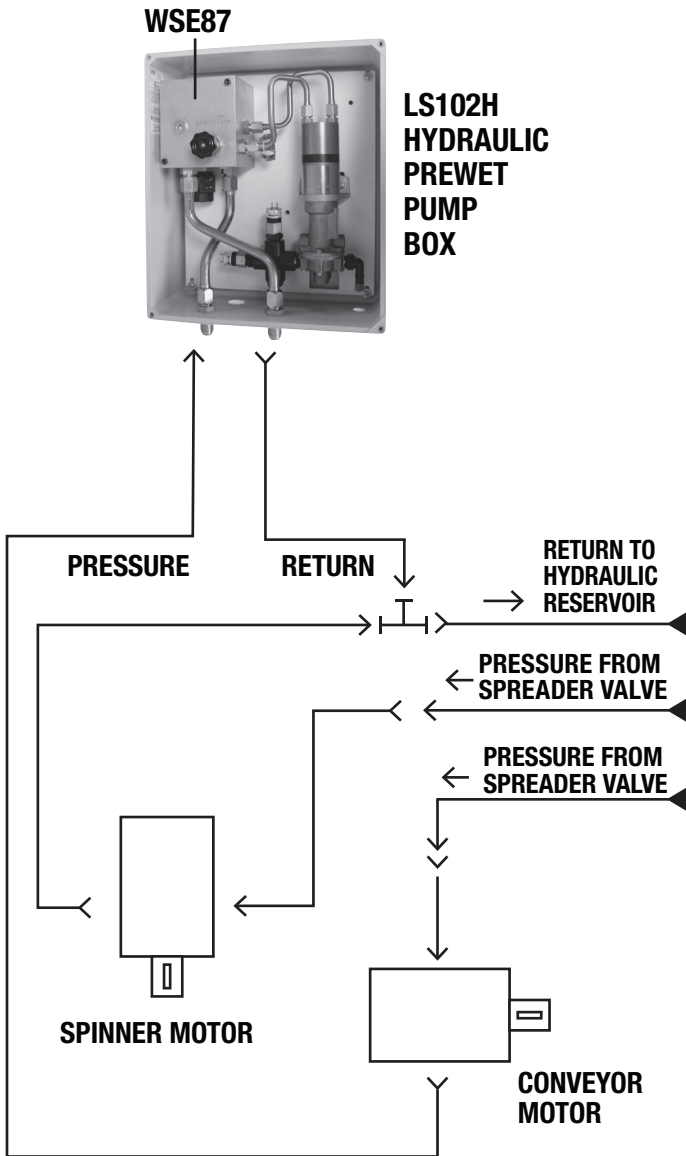


Fig. 3 - Prewet Plumbing Diagram

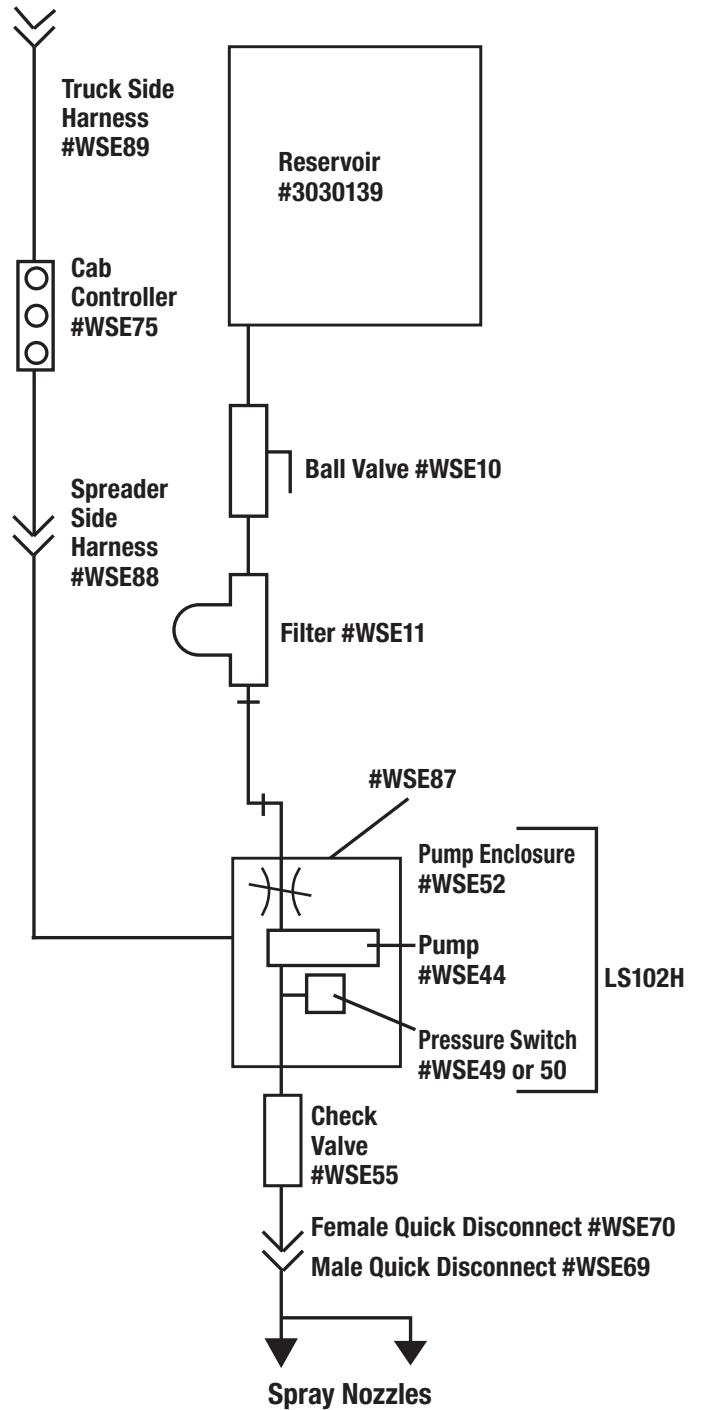


Fig. 4 - Filter/Valve Assembly

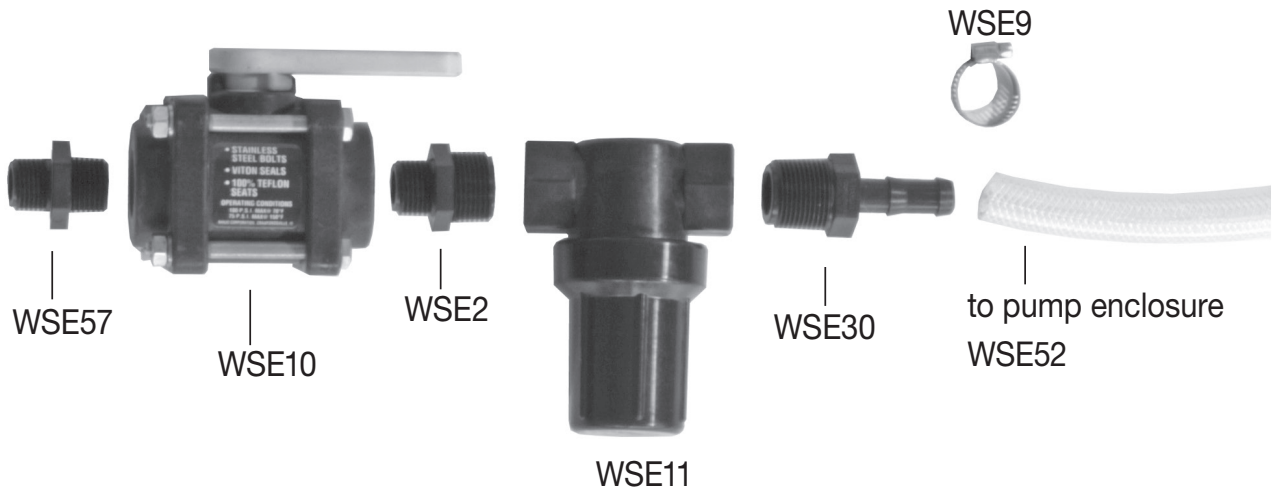
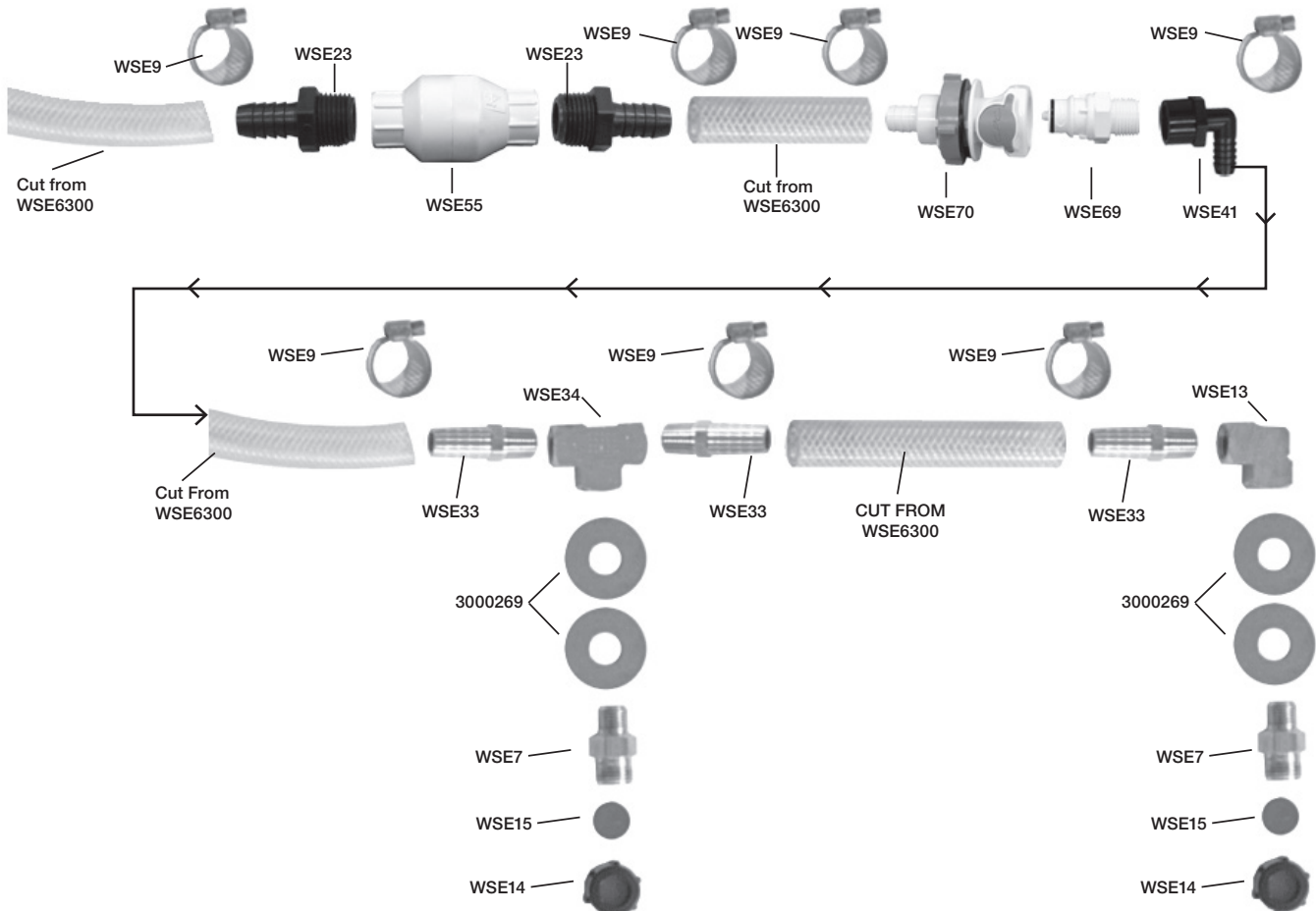
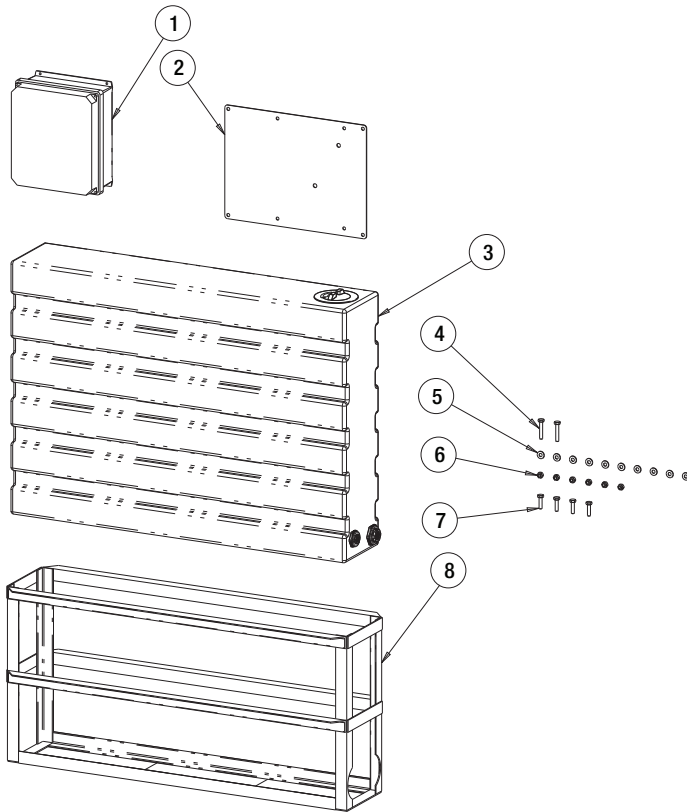


Fig. 5 - Nozzle Assembly

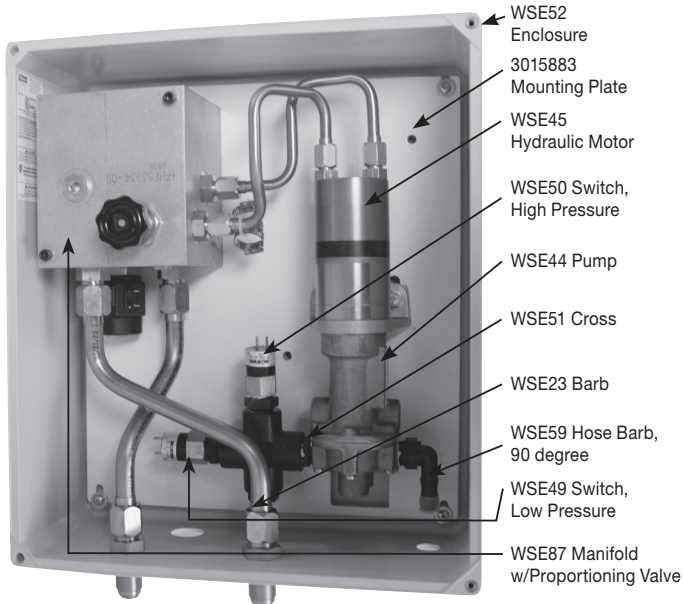


Bill of Materials



ITEM	PART NO.	QTY.	DESCRIPTION
1	WSE100	1	ENCLOSURE ASSY, HYD
<i>SEE FIGURE 6 FOR INTERNAL COMPONENTS OF WSE100</i>			
2	3017949	1	PLATE, MOUNT, ENCLOSURE HYDRAULIC
3	3030139	1	RESERVOIR, 120 GALLON
4	FCS025020150SS	2	SCREW, 1/4-20 X 1-1/2 SST
5	FWF025063007SS	10	WASHER, FLAT, 1/4 SST
6	FNE025020031SS	6	NUT, NYLON LOCKING 1/4-20 SST
7	FCS025020100SS	4	SCREW, 1/4-20 X 1 SST
8	3033887	1	FRAME, MOUNTING, 120 GALLON RESERVOIR
<i>FOLLOWING PARTS ARE SHOWN ON FIGURES 4 AND 5</i>			
	2958393	1	PLUG, POLY, 1 IN MNPT
	3000269	4	WASHER, FLAT, 1/2 USS SST
	WSE2	1	NIPPLE, POLY, HEX 3/4 X 1/2
	WSE7	2	NOZZLE BODY, BRASS
	WSE9	8	HOSE CLAMP
	WSE10	1	BALL VALVE, POLY, 1/2 FNPT
	WSE11	1	FILTER, POLY, 3/4 FNPT
	WSE13	1	ELBOW, BRASS, 1/4 FNPT X 1/4 FNPT
	WSE14	2	NOZZLE, CAP
	WSE15	2	NOZZLE, RUBBER
	WSE23	2	BARB, POLY, 1/2 MNPT X 1/2 HB
	WSE30	1	BARB, POLY, 3/4 MNPT X 1/2 HB
	WSE33	3	BARB, HOSE, BRASS, 1/4 MNPT X 1/2 HB
	WSE34	1	TEE, BRASS, 1/4 FNPT X 1/4 FNPT X 1/4 FNPT
	WSE41	1	ELBOW, POLY, 1/2 FNPT X 1/2 HB
	WSE55	1	CHECK VALVE
	WSE57	1	NIPPLE, POLY, HEX 1/2 MNPT X 1/2 MNPT
	WSE6300	1	HOSE, POLY, 1/2 X 300 IN
<i>FOLLOWING PARTS ARE SHOWN IN FIGURES 1 AND 3</i>			
	WSE75	1	CONTROLLER, IN CAB
	WSE89	1	HARNES, TRUCK SIDE
	WSE88	1	HARNES, SPREADER SIDE

Fig. 6 WSE100 Hydraulic Prewet Pumpbox Reference



WARRANTY

Buyers Products Co. warrants all truck/trailer hardware manufactured or distributed by it, to be free from defects in material and workmanship for a period of one year from date of shipment. Parts must be properly installed and used under normal conditions. Any product which has been altered, including modification, misuse, accident or lack of maintenance will not be considered under warranty. Normal wear is excluded. The sole responsibility of Buyers Products Co. under this warranty is limited to repairing or replacing any part or parts which are returned, prepaid, and are found to be defective by Buyers Products Co. Authorization from Buyers Products Co. must be obtained before returning any part. No charges for transportation or labor performed on Buyers' products will be allowed under this warranty.

CAUTION

Always wear hand, eye, and skin protection when working with de-icing chemicals. Make sure everyone is standing clear of liquid spray system before operating.

SAFETY ALERT SYMBOL

 This Symbol Means **ATTENTION!**
Please Read & Understand Completely Before Operating!

EQUIPMENT INSTALLERS & OPERATORS:

TURN OFF ALL POWER BEFORE PERFORMING ANY SERVICE OPERATIONS.

- Follow Recommended Operating Procedure.
- Keep Equipment In Safe Operating Condition At All Times.
- Recognize & Avoid Hazards While Operating, Servicing and Maintaining Equipment.

 **CAUTION**
RESERVOIR & COMPONENTS MAY CONTAIN HAZARDOUS MATERIAL. HANDLE WITH CARE.