

# Installation/Operation Instructions

## Replacement Tailgate Spreader for DumperDogg 5535000 (Steel, Stainless Steel, or Poly)

### WARNING

Observe the following Safety Precautions before, during and after operating this spreader. By following these precautions and common sense, possible injury to persons and potential damage to this machine may be avoided.

### Safety Precautions

- Ensure unit is mounted properly and latch pins are fully engaged to dump bed before use.
- Never stick hands or limbs into unit while operating. Serious injury or death can occur.
- Always disconnect power before working on or adjusting unit.
- Never modify spreader or warranty will be void.
- Never use spreader for anything other than salt, sand, or calcium products.
- Keep fingers and limbs away from spinner and augers during operation.
- Ensure there is proper clearance between the spinner assembly and bumper of vehicle during lifting of the dump bed. On some vehicles the bed can not be lifted the full 45 degrees.
- Always inspect hardware before every use to ensure bolts and nuts have not loosened.
- Never operate vehicle with dump bed in full upright position.

### Tailgate Assembly Instructions

1. After receiving your tailgate spreader ensure the necessary components and hardware have been shipped and that the unit is not damaged. See packing list for complete breakdown of hardware.
2. The main components of the tailgate spreader are already assembled from the factory. The spinner assembly can be assembled either with the main spreader before installation to the dump body or after. It may be easier to install the spinner after the unit has been installed to reduce weight and keep the spinner assembly from getting in the way.
3. Assemble spinner assembly by using the pivot bar (3015755) and lynch pins (66003) provided with hardware. Ensure the lynch pins are properly fastened. Tighten pivot bar with screw shown in Fig. 1.
4. Install the main spreader assembly on Dump Body and ensure all four latch pins are fully engaged. It may be easier to use a tow motor to install the unit. There is a hook provided on top of the spreader for use with a proper chain.
5. Install spill guard (see item number 2 in Fig. 3) on top of spreader using the provided 3/8-16x1 bolts. Ensure the guard is safely fastened by using provided 3/8-16 locknuts.
6. A skirt kit (3016927) is included with the spreader. The skirt kit is designed to be placed between the spreader and the truck to keep salt out of the truck bed. Installation of the skirt is optional and at user's discretion.

### Electrical Installation

1. Do not connect to power source until all electric components are installed.
2. Locate control box, all wire harnesses, and accessories shown in Fig. 2.
3. Install battery cable harness (3035935) through fire wall. Hole may need to be drilled. Place cables near desired location by the battery. Do not connect leads to battery at this time. Run cables through drilled hole being careful not to damage insulation of cable.
4. Once cables are through hole, seal hole with a grommet and or silicone to prevent water from entering interior of vehicle.
5. Locate an accessible position for the controller (3016934). Fasten control loosely so harnesses can be connected with ease.
6. A tail light is included with this spreader in the event that the spreader motor blocks your vehicle's tail light. Be sure to wire the tail light correctly. On most trucks the light can be attached to the existing harness. If there is no harness, the wires will need to be spliced into your rear tail light.

### WARNING

Do not install controller in the deployment path of an air bag. Refer to vehicle manufacturer's manual for air bag deployment area(s).

7. Connect battery cables to the control unit. The battery cable has a red connector and can only be plugged in one way.
8. Route the motor wire harness (3016944) through vehicle to spreader. Use wire ties to fasten harnesses to frame and or under carriage. Ensure harnesses do not interfere with any moving parts and are not located near a heat source such as an exhaust. Be careful not to damage or kink the harnesses in any way. The single end of the harness attaches to the controller.
9. Connect the ignition cable (0203700) to the controller and to a power source in the fuse box controlled by the ignition key.
10. Ensure no obstructions are present in the spreader and make sure the unit is off before connecting cables to battery.
11. The battery cables may now be attached. Ensure leads are connected to a clean and secure battery post.
12. The unit should now be ready for operation. Check the spreader is receiving power and that all controls are working.

## Operation

1. Inspect spreader and spinner assembly to ensure all hardware is tight.
2. Ensure wire harness is not hanging down and that is securely fastened.
3. Lubricate bearings, chains, and chain sprockets.
4. Make sure there is proper tension on chain.
5. Adjust feed door, and deflectors.
6. Never adjust any components of the spinner unless unit is turned off and disconnected from a power source.
7. Load dump bed with approved material. Do not exceed the vehicle's GVWR.
8. Raise the dump body to move salt to rear of the dump bed, ensure spinner assembly does not hit the bumper. If the unit is tilted its full 45 degrees the spinner may hit the bumper on some vehicles.
9. Turn power on for the controller and adjust settings and deflectors for desired spread pattern. This will require some practice before achieving the desired settings.
10. Raise dump bed periodically to shift material towards spreader.
11. Do not run spreader unless the vehicle is running. Failure to do so will result in a dead battery.

## Adjustments

Never adjust any aspect of spreader with the unit running.

### Door adjustment

1. Loosen the lock bolt to the left of the door. Adjust door to desired opening, re-tightening lock bolt.
2. Do not over tighten this bolt. It is only a friction lock.

### Chain adjustment

1. Remove passenger side cover on spreader. (Two bolts and nuts).
2. To adjust the chain, loosen the rear bearings connected to the agitator shaft and adjust the shaft until the proper amount of tension is achieved (about 1/2" of play).
3. Re-tighten bearings and reattach covers.
4. Make sure set screws are tight on sprockets.

## Spinner adjustment

1. Adjust the spinner deflectors by loosening the bolts and nuts connecting the deflectors to the assembly.
2. Adjust position and re-tighten.
3. Loosen the bolt on the pivot rod and slide spinner assembly to desired position.
4. Re-tighten bolt.

## Maintenance

- To access the bearings and chain drive the outer cover panels must be removed from unit.
- The left cover requires the two bolts and nuts at the top and bottom of the panel to be removed. Reinstall in the reverse sequence.
- The right panel requires the removal of the motor shaft clevis pin and two nuts and bolts at the top and bottom of the panel. Locate the access hole on the bottom of the spreader and remove the cotter pin and clevis pin. The motor will remain attached to the cover plate. To reassemble the cover plate, align the motor shaft with the auger shaft and reinsert clevis pin and cotter pin. Reinstall bolts and nuts.

## Bearings

1. Grease bearings at least once a week or as often as needed.
2. Check that the bearings are fastened securely to the spreader housing.

## Chain

1. Oil the chain in conjunction with the bearings.
2. Check for proper tension periodically. (1/2" of play)
3. Check for broken or loose links.

## When the unit is not in use

1. Disconnect the power cables.
2. Clean unit by removing all salt and debris. Never let salt sit in the unit. It may harden and become very difficult to remove.
3. Always use caution when moving and installing the spreader unit.

## 5535000 SPREADER WARRANTY INFORMATION

This warranty replaces all previous warranties and no employee of this company is authorized to extend additional warranties, or agreements, or implications not explicitly covered herein.

Buyers Products Company warrants all parts of the product to be free from defects in material and workmanship for a period of one (1) year. Parts must be properly installed and used under normal conditions. Normal wear is excluded.

Any part, which has been altered, including modifications, misuse, accident, or lack of maintenance will not be considered under this warranty.

The sole responsibility of Buyers Products Company under this warranty is limited to repairing or replacing any part(s), which are returned, prepaid, 30 days after such defect is discovered, and returned part(s) are found to be defective by Buyers Products Company.

Authorization from Buyers Products Company must be obtained before returning any part. The following information must accompany defective parts returned to Buyers Products Company: RMA #, spreader model, serial number, date installed, and distributor from whom purchased.

Buyers Products Company shall not be liable for damage arising out of failure of any unit to operate properly, or failure, or delay in work, or for any consequential damages. No charges for transportation or labor performed on any part will be allowed under this warranty.

Fig. 1

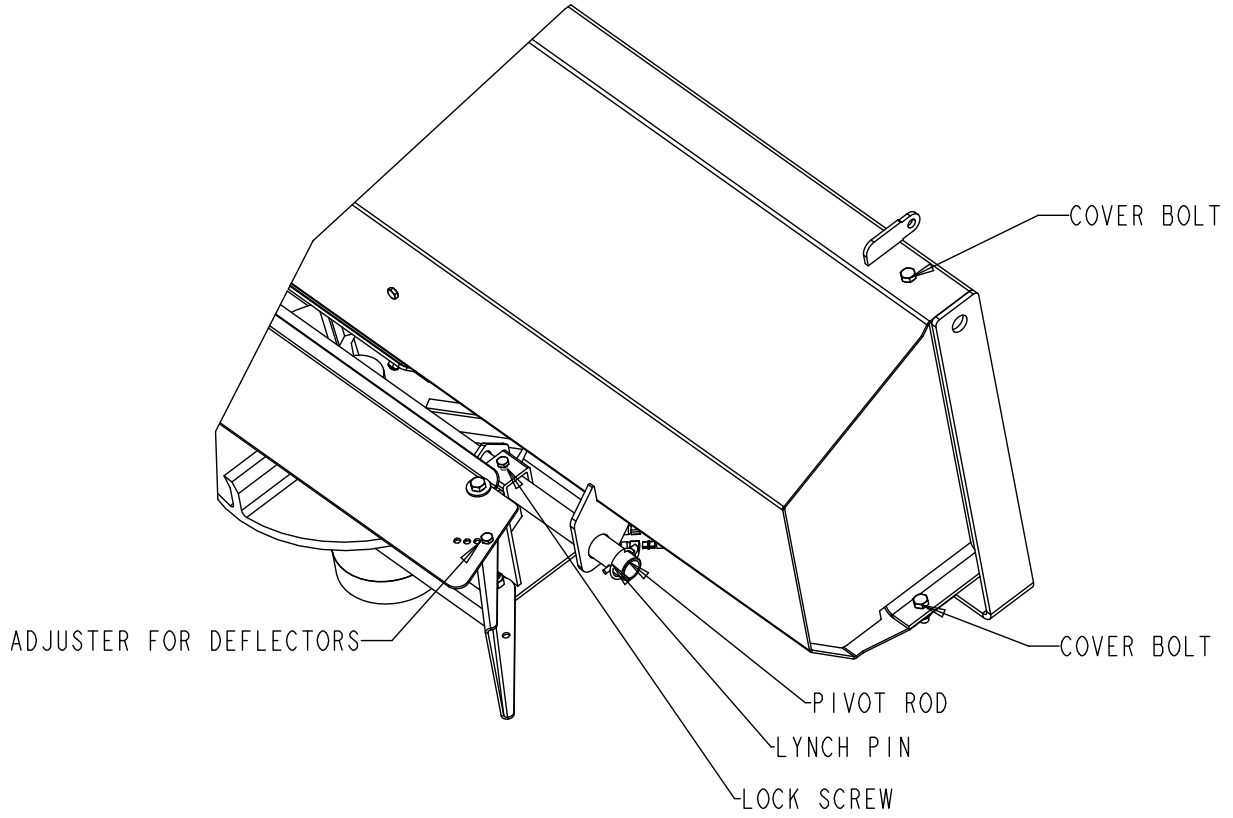


Fig. 2

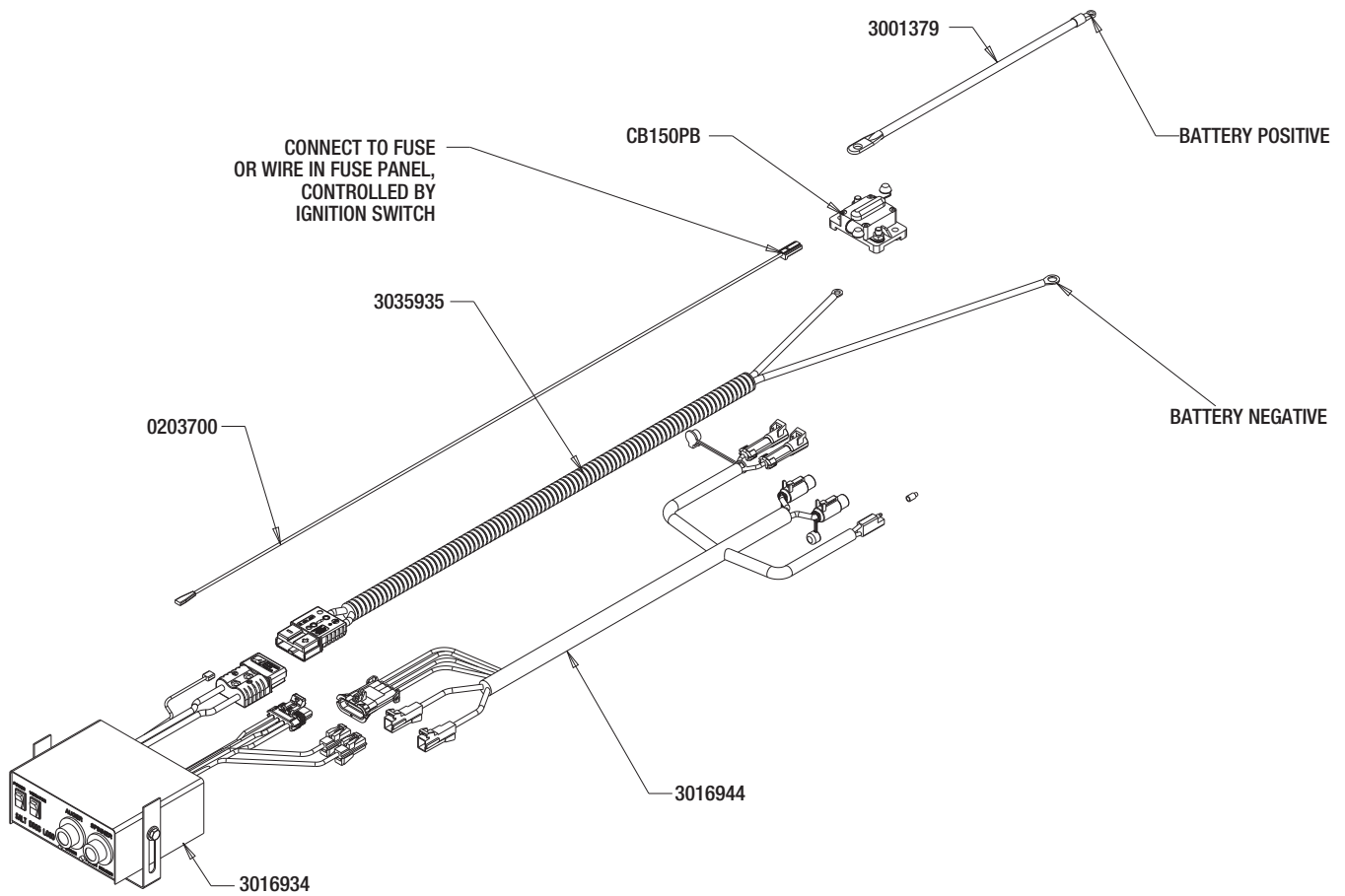
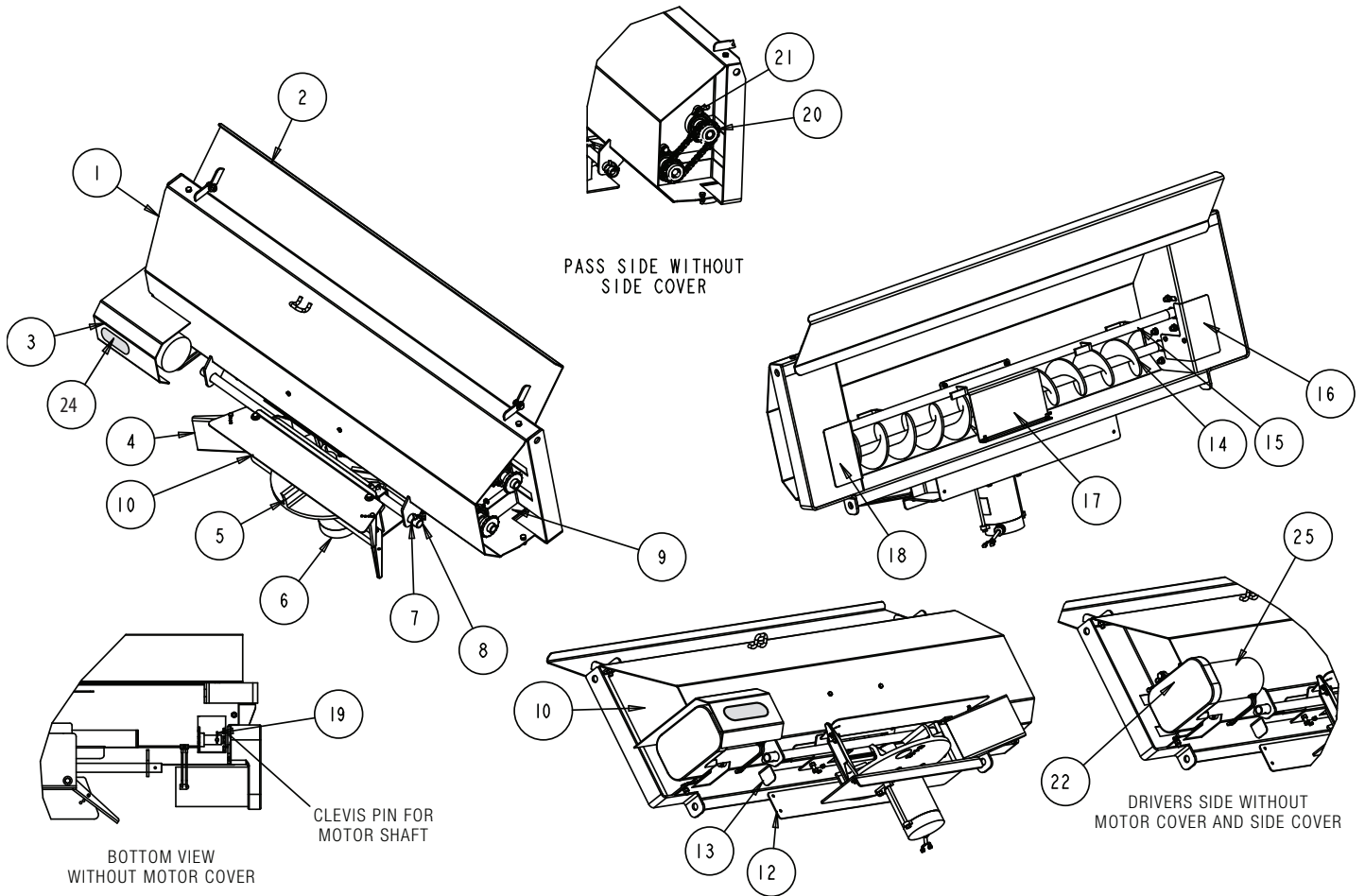


Fig. 3



**Bill of Materials**

ITEM	PART NO.	QTY.	DESCRIPTION
1	3015752	1	HOUSING
2	3015885	1	SPILL GUARD
3	3019582	1	MOTOR COVER
4	3015756	2	DEFLECTORS
5	3012393	1	SPINNER
6	3016309	1	MOTOR, SPINNER
7	66003	1	LYNCH PIN
8	3015755	1	PIVOT ROD
9	3021438	1	COVER, PASS SIDE (NOT SHOWN)
10	3021440	1	COVER, DRIVER SIDE
11	3015759	1	DEFLECTOR, TOP
12	3015760	1	SHIELD
13	3015766	1	DOOR

ITEM	PART NO.	QTY.	DESCRIPTION
14	3015780	1	AUGER
15	3015782	1	AGITATOR
16	3015775	1	DUST SHIELD, DRIVER
17	3015773	1	SPILL GUARD
18	3015774	1	DUST SHIELD, PASS
19	-	1	7/16-14 BOLT
20	3015876	2	SPROCKET
21	1410200	4	BEARING
22	3013821	1	MOTOR, AUGER
23	3015783	1	CHAIN
24	5626510	1	TAIL LIGHT
	3016927	1	SKIRT KIT
25	3014778	1	MOTOR REPLACEMENT FOR 3013821