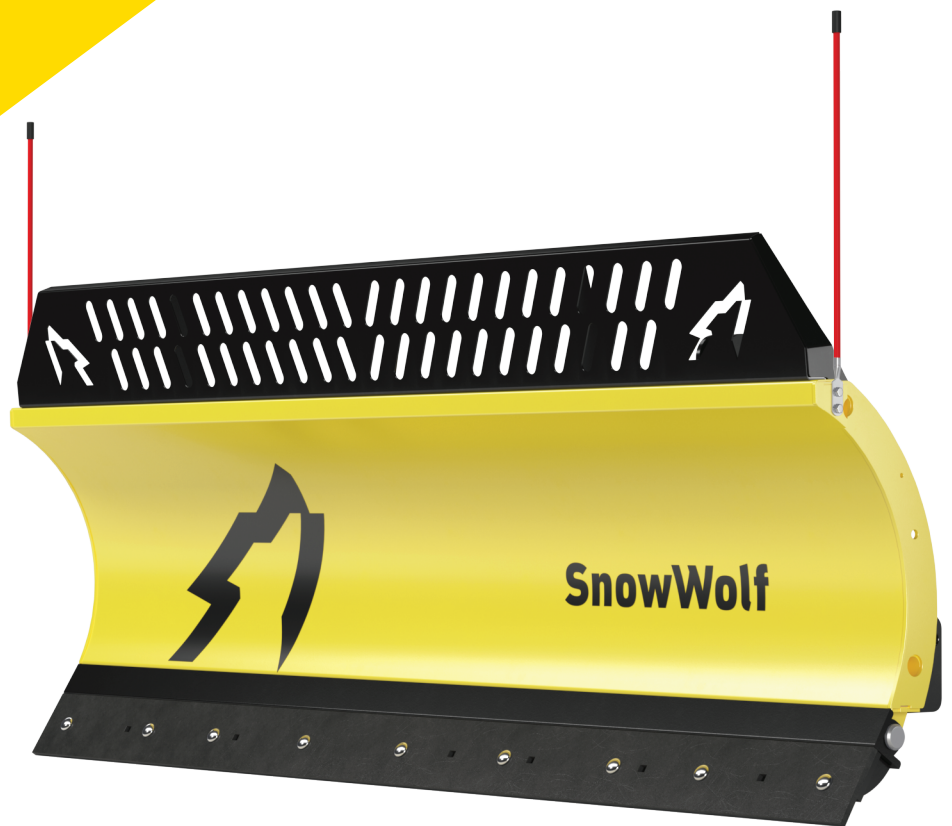




SnowWolf

Operation & Maintenance Manual



6,000 - 14,000 lb.

UltraPlow™



REMEMBER: Register your product! No claims for warranty shall be considered unless your product registration card is completed online within 30 days of purchase. Go to: snowwolfplows.com/registration.

MANUFACTURER'S WARRANTY

Two-Year Limited Warranty

SNOWWOLF International, hereinafter referred to as SNOWWOLF, warrants new SNOWWOLF SNOW PLOWS at the time of delivery to the original purchaser, to be free from defects in material and workmanship when properly set up and operated in accordance with the recommendations set forth by SNOWWOLF.

SNOWWOLF'S liability for any defect with respect to accepted goods shall be limited to repairing the goods at a SNOWWOLF designated location or at an authorized dealer location, or replacing them as SNOWWOLF shall elect. The above shall be in accordance with SNOWWOLF warranty adjustment policies. SNOWWOLF'S obligation shall terminate twenty-four (24) months after the delivery of the goods to original purchaser including cutting edge breakage or wear. This warranty shall not apply to any machine or attachment which shall have been repaired or altered outside the SNOWWOLF factory or authorized SNOWWOLF dealership or in any way so as in SNOWWOLF'S judgment, to affect its stability or reliability, nor which has been subject to misuse, negligence or accident beyond the Company recommended machine rated capacity.

Warranty Claim

To submit a warranty claim, a return authorization from SNOWWOLF must be obtained. The failed part may then be returned. Tampering with the failed part may void the warranty. This warranty does not include freight or delivery charges incurred when returning machinery for servicing. Dealer mileage, service calls, and pickup/delivery charges are the customers' responsibility.

Exclusions of Warranty

Except as otherwise expressly stated herein, SNOWWOLF makes no representation or warranty of any kind, expressed or implied, AND MAKES NO WARRANTY OF MERCHANTABILITY IN RESPECT TO ITS MACHINERY AND/OR ATTACHMENTS ARE FIT FOR ANY PARTICULAR PURPOSE. SNOWWOLF shall not be liable for incidental or consequential damages for any breach of warranty, including but not limited to inconvenience, rental of replacement equipment, loss of profits or other commercial loss. Upon purchase, the buyer assumes all liability for all personal injury and property resulting from the handling, possession, or use of the goods by the buyer.

No agent, employee, or representative of SNOWWOLF has any authority to bind SNOWWOLF to any affirmation, representation or warranty concerning its machinery and/or attachments except as specifically set forth herein.

This warranty policy supersedes any previous documents.

No claims for warranty shall be considered unless warranty registration is sent to SNOWWOLF within 30 days of purchase!

Manufactured By:



15100 Business Parkway
Rosemount, MN 55068
www.snowwolfplows.com



Introduction.....3

 Owner Information5

 Serial Number Location5

 Attachment Identification6

Safety.....7

 Safety Information9

 Safe Operation Needs A Qualified Operator9

 Importance of Safety10

Operation.....13

 General Information15

 Pre-Operation Inspection15

 Attachment Inspection16

 Daily Inspection16

 Monthly Inspection16

 Attachment Installation17

 Entering The Operator’s Position17

 Leaving The Operator’s Position17

 Connecting Attachment To The Machine17

 Hydraulic Couplers18

 Checking UltraPlow Operation19

 Operating The Attachment20

 Operation20

 Attachment Removal21

Maintenance.....23

 Maintenance Safety25

 General Maintenance26

 UltraPlow Maintenance27

 Cutting Edge Replacement27

 Cutting Edge Trip Spring Adjustment / Replacement28

 Wear Shoe Adjustment / Replacement (if equipped)28

 Hydraulic Angle Cylinder28

 Side Wing Cutting Edge Replacement (if equipped)29

 Trip Edge Side Wing Cutting Edge Replacement (if equipped)29

 Troubleshooting30

 Storage And Return To Service31

| | |
|--|----|
| Parts | 33 |
| Models Ultra 72, Ultra 84, Ultra 96 | 36 |
| Parts..... | 36 |
| Options..... | 38 |
| Models Ultra 108, Ultra 120, Ultra 132..... | 40 |
| Parts..... | 40 |
| Options..... | 42 |
| Models Ultra XT108, Ultra XT120, Ultra XT132 | 44 |
| Parts..... | 44 |
| Options..... | 46 |
| Hydraulics | 48 |
| Hoses..... | 48 |
| Hydraulic Components | 49 |
| No Crossover Relief, (Ultra 72, 84 Models Only)..... | 50 |
| Trip Edge Generations | 51 |
| Options | 52 |
| Flex Frame | 52 |
| ActivEdge, AR400, 18" Sectional Blade | 53 |
| ActivEdge, AR400, 24" Sectional Blade | 54 |
| ActivEdge, Carbide, AR400, 18" Sectional Blade | 55 |
| ActivEdge, Carbide, AR400, 24" Sectional Blade | 56 |
| WolfWing Side Wing Kit (60003) | 57 |
| Trip Edge WolfWing Side Wing Kit (60003-TE) | 58 |
| Spill Guard..... | 59 |
| UltraPlow FastTach - 50025 | 60 |
| Curb Guard | 62 |
| Specifications | 63 |
| Specifications | 65 |
| Dimensions | 68 |
| Torque Specifications | 69 |



| | |
|---------------------------------|---|
| Owner Information | 5 |
| Serial Number Location | 5 |
| Attachment Identification | 6 |



Owner Information

Thank you for your decision to purchase a SnowWolf UltraPlow. To ensure maximum performance of your equipment, it is mandatory that you thoroughly study the Operator's Manual and follow the recommendations. Proper operation and maintenance are essential to maximize equipment life and prevent personal injury.

Operate and maintain this equipment in a safe manner and in accordance with all applicable local, state, and federal codes, regulations and / or laws. Follow all on-product labeling and instructions.

Make sure that all personnel have read this Operator's Manual and thoroughly understand safe and correct operating, installation and maintenance procedures.

SnowWolf is continually working to improve its products. SnowWolf reserves the right to make any improvements or changes as deemed practical and possible without incurring any responsibility or obligation to make any changes or additions to equipment sold previously.

Although great care has been taken to ensure the accuracy of this publication, SnowWolf makes no warranty or guarantee of any kind, written or expressed, implied or otherwise with regard to the information contained within this manual. SnowWolf assumes no responsibility for any errors that may appear in this manual and shall not be liable under any circumstances for incidental, consequential or punitive damages in connection with, or arising from the use of this manual.

Keep this manual available for frequent reference. All new operators or owners must review the manual before using the equipment and annually thereafter. Contact your SnowWolf Attachments Dealer for assistance, information, or additional copies of the manual. Contact www.snowwolfplows.com or call 1-800-905-2265 for a complete list of dealers in your area.

Serial Number Location

Please record attachment information in the space provided for future reference.

Model Number: _____

Serial Number: _____

Dealer Name: _____

Dealer Number: _____

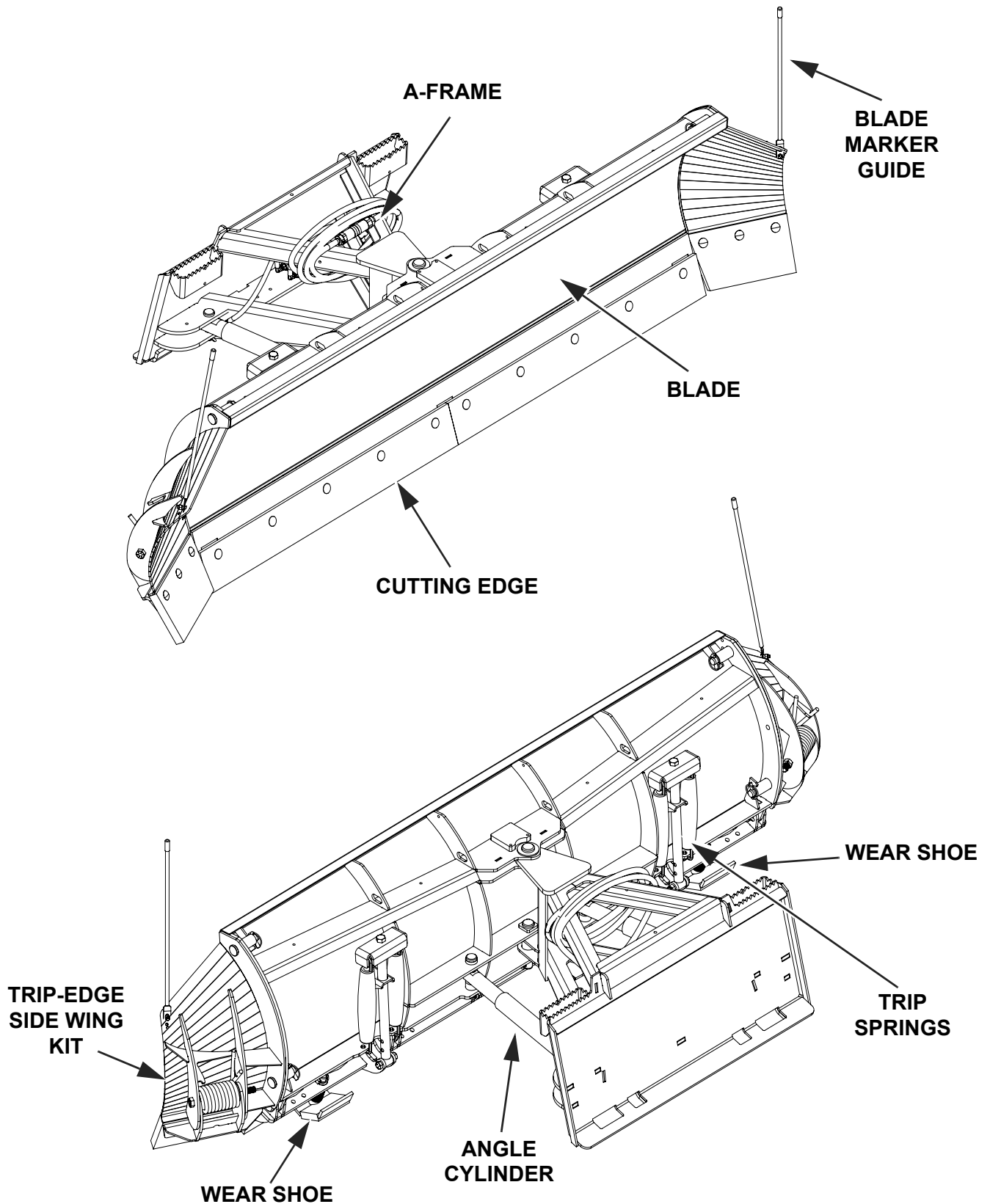
Date of Purchase: _____

Always use the serial number of the UltraPlow when requesting service information or when ordering parts. Early or later models (identification made by serial number) may use different parts, or may require a different procedure in doing a specific service operation.

NOTE: This document and the information provided are the property of SnowWolf and may only be used as authorized by SnowWolf.

The serial number plate is located on the rear of the UltraPlow moldboard.

Attachment Identification





| | |
|---|----|
| Safety Information | 9 |
| Safe Operation Needs A Qualified Operator | 9 |
| Importance of Safety | 10 |



Safety Information

Safety Alert Symbol

This SAFETY ALERT SYMBOL identifies important safety messages on the equipment and in the owner's manual. When you see this symbol, be alert to the possibility of personal injury and carefully read the message that follows.

DANGER

The signal word DANGER on the machine and in the manuals indicates a hazardous situation which, if not avoided, will result in death or serious injury.

WARNING

The signal word WARNING on the machine and in the manuals indicates a potentially hazardous situation which, if not avoided, could result in death or serious injury.

CAUTION

The signal word CAUTION on the machine and in the manuals indicates a potentially hazardous situation which, if not avoided, may result in minor or moderate injury. It may also be used to alert against unsafe practices.

IMPORTANT

The signal word IMPORTANT identifies procedures which must be followed to avoid damage to the machine.

Safe Operation Needs A Qualified Operator

WARNING

AVOID SERIOUS INJURY OR DEATH

Operators must receive instructions before operating the machine. Untrained operators can cause serious injury or death.

For an operator to be qualified, he or she must not use drugs or alcoholic drinks which impair alertness or coordination while working. An operator who is taking prescription drugs must get medical advice to determine if he or she can safely operate a machine and the equipment.

Owner's Responsibility

Operate and maintain this machine in a safe manner and in accordance with all applicable local, state, and federal codes, regulations and/or laws; and in compliance with on-product labeling and this owner's manual instructions.

Make sure that all personnel have read this owner's manual, and thoroughly understand safe and correct installation, operation and maintenance procedures

Give operating instructions to the operators before allowing them to operate the machine, and at least annually thereafter.

Importance of Safety

Operating Safety

- Read and follow instructions in this manual and the machine's Operators Manual before operating.
- The UltraPlow attachment is intended for use in snow removal. Use of this equipment in any other manner is considered to be contrary to the intended use of the attachment.
- Under no circumstances should young children be allowed to work with this equipment.
- This equipment is dangerous to persons unfamiliar with its operation.
- Check for overhead and / or underground lines before operating equipment (if applicable).
- In addition to the design and configuration of equipment, hazard control and accident prevention are dependent upon the awareness, concern, prudence and proper training of personnel involved in the operation, transport, maintenance and storage of equipment.
- Check that the attachment is securely fastened to the machine.
- Make sure all the machine controls are in NEUTRAL before starting the machine.
- Operate the equipment only from the operator's position.
- Operate the equipment according to the Operator's Manual.
- When learning to operate the equipment, do it at a slow rate in an area clear of bystanders.
- DO NOT permit personnel to be in the work area when operating the equipment.
- The equipment must be used ONLY on approved machines.
- DO NOT modify the equipment in any way. Unauthorized modification may impair the function and / or safety and could affect the life of the equipment.
- DO NOT make any adjustments or repairs on the equipment while the machine is running.
- Keep shields and guards in place. Replace if damaged.
- DO NOT operate equipment in poor visibility conditions such as fog, darkness, or any conditions that limit clear visibility less than 300 feet (100 m) in front of and to the sides of the equipment.
- DO NOT operate in a work area that has not been inspected for foreign debris and obstacles.
- Remove any foreign objects and clearly mark any objects that cannot be removed.
- Wear safety glasses, gloves, hard hat, hearing protection and other protective clothing when operating or maintaining this equipment.

Importance of Safety (Cont'd)

Fire Prevention Safety

- Flammable debris (leaves, grass, etc.) must be removed regularly. If flammable debris is allowed to accumulate, it can cause a fire hazard. Clean often to avoid this accumulation.
- The equipment's hydraulic motor compartment must be inspected every day and cleaned if necessary to prevent fire hazards and overheating.
- All fuels, most lubricants and some coolant mixtures are flammable. Flammable fluids that are leaking or spilled onto hot surfaces or onto electrical components can cause a fire.

Transporting Safety

- Comply with state and local laws governing highway safety and movement of machinery on public roads.
- Check local laws for all highway lighting and marking requirements.
- Always yield to oncoming traffic and move to the side of the road so any following traffic may pass.
- Never allow riders on either machine or equipment.
- If transporting the attachment on a truck or trailer, make sure it is properly secured to the transport vehicle.

Hydraulic Safety

- Always disconnect hydraulic connections between the machine and the UltraPlow before performing maintenance to the UltraPlow.
- Always clean fluid spills. Do not use gasoline or diesel fuel for cleaning parts. Use commercial nonflammable solvents.
- Check hydraulic tubes, hoses and fittings for damage and leakage. Never use open flame or bare skin to check for leaks. Hydraulic tubes and hoses must be properly routed and have adequate support and secure clamps. Tighten or replace any parts that show leakage.



Leaking fluids under pressure can enter the skin and cause serious injury or death. Immediate medical attention is required. Wear goggles. Use cardboard to check for leaks.





General Information 15
 Pre-Operation Inspection 15
Attachment Inspection 16
 Daily Inspection 16
 Monthly Inspection 16
Attachment Installation 17
 Entering The Operator’s Position 17
 Leaving The Operator’s Position 17
 Connecting Attachment To The Machine 17
 Hydraulic Couplers 18
 Checking UltraPlow Operation 19
Operating The Attachment 20
 Operation 20
Attachment Removal 21



General Information

Pre-Operation Inspection

Before operating the UltraPlow for the first time and each time thereafter, use the following list as a guideline during equipment inspection.

1. Use only a machine of adequate power and weight to operate the UltraPlow.
2. Check the UltraPlow and machine's quick tach mounts for damaged, loose or missing parts. Repair as needed before operation.
3. Check that the UltraPlow blade is properly attached to the machine. Be sure retainers are used on the mounting pins.
4. Check that wear shoes (if equipped) are set at the same working depth.
5. Make sure that all guards and shields are in place, secured and functioning as designed.
6. Check oil level in machine's hydraulic reservoir.
7. Check that the hydraulic couplers are securely attached to the UltraPlow and to the machine. Make sure hoses are routed and secured to avoid pinch points or strain during movement of the machine/attachment.
8. Check cutting blade for wear or damage.
9. Check hydraulic lines, connections and fittings for hydraulic oil leaks.

WARNING



Leaking fluids under pressure can enter the skin and cause serious injury or death. Immediate medical attention is required. Wear goggles. Use cardboard to check for leaks.

Attachment Inspection

Daily Inspection

NOTE: Inspect the attachment by performing a walk around daily before and after use. Use the following inspection checklist as a guideline.

Check the following items every 10 hours of operation:

- Verify that the UltraPlow is properly connected to the machine.
- Check that all shields and guards are in place.
- Check for damaged or leaking hydraulic hoses or fittings. Replace if necessary.
- Check moldboard cutting edge for wear or damage. Replace if necessary.
- Check side wing cutting edge's (if equipped) for wear or damage. Replace if necessary.
- Check that all cotter pins that retain pivot/anchor pins are in place and not damaged or missing.
- Check the UltraPlow to ensure that all components are secure and that all bolts and nuts are thoroughly tightened.
- Check the UltraPlow mounting hardware for wear or damage. Inspect the pins and mount (on the attachment) for wear or damage. Repair or replace damaged parts if necessary.

Monthly Inspection

- Inspect the UltraPlow for cracks, bends, or excessive wear.
- Check wear plates (if equipped) for wear.
- Check that all bolts are tight.
- Check blade and mounting plate for cracks or damage. Replace if necessary.
- Check side wing cutting edge's (if equipped) for cracks or damage. Replace if necessary.
- Check hydraulic lines, connections and fittings for hydraulic oil leaks. Repair or replace damaged parts if necessary.
- Check for damaged or missing decals. Replace if necessary.
- Lubricate as required.



WARNING

AVOID SERIOUS INJURY OR DEATH

Before servicing the attachment:

- **Always park on a flat level surface.**
- **Lower lift arms and place attachment flat on the ground.**
- **Place all controls in NEUTRAL.**
- **Engage the park brake.**
- **Wait for all moving parts to stop.**
- **Stop the engine and remove the key.**

SEE MACHINE'S OPERATOR'S MANUAL FOR ADDITIONAL INFORMATION.

Attachment Installation



IMPORTANT



See the machine's Operator's Manual for detailed information on operating the loader.

Entering The Operator's Position

Use the attachment safety treads, handles and steps (on the machine) to enter the operator's position.

When in the operator's position, lower safety seat bar, start the engine and release the parking brake.

Leaving The Operator's Position



WARNING

AVOID SERIOUS INJURY OR DEATH

Before leaving the operator's position:

- Always park on a flat level surface.
- Lower lift arms and place attachment flat on the ground.
- Place all controls in **NEUTRAL**.
- Engage the park brake.
- Stop the engine and remove the key.
- Wait for all moving parts to stop.

SEE MACHINE'S OPERATOR'S MANUAL FOR ADDITIONAL INFORMATION.

Park the machine / attachment on a flat level surface.

Place all controls in neutral, engage the park brake, stop the engine and wait for all moving parts to stop. Leave the operator's position.

Connecting Attachment To The Machine



WARNING



CRUSH HAZARD

- Before moving the machine, look in all directions and make sure no bystanders, especially small children are in the work area. Do not allow anyone between the machine and attachment when approaching the attachment for connecting.
- Keep fingers and hands out of pinch points when connecting and disconnecting attachment.

Before connecting to the attachment, inspect the machine's mounting plate. (See the machine's Operator's Manual for inspecting the mounting frame).

Enter the operator's position. See "Entering The Operator's Position" on page 17.

Lower the machine's lift arm and tilt the machine's mounting plate forward.

Drive the machine slowly forward until the top edge of the machine's mounting frame is completely under the mounting flange of the UltraPlow mounting frame.

Slowly raise and tilt the machine's mounting plate back until the UltraPlow is slightly off the ground and attachment mounting frame fully contacts the front of the machine's mounting plate.

Connecting Attachment To The Machine (Cont'd)

Stop the engine and engage the parking brake.

Leave the operator's position. See "Leaving The Operator's Position" on page 17.

Engage machine's locking levers / wedges to securely fasten the UltraPlow to the machine's mounting frame. (See the machine's Operation Manual for the correct procedure.)

Visually inspect that the wedge pins are securely fastened into the UltraPlow mounting frame.

WARNING

AVOID SERIOUS INJURY OR DEATH

The locking pins / wedges must extend through the holes in the attachment mounting frame. Failure to secure locking pins / wedges can allow attachment to come off.

SEE MACHINE'S OPERATOR'S MANUAL FOR ADDITIONAL INFORMATION.

Engage machine's locking levers / wedges (See the machine's Operator's Manual for detailed information).

Hydraulic Couplers



IMPORTANT

- **Thoroughly clean the quick couplers before making connections. Dirt can quickly damage the hydraulic system.**



WARNING

AVOID BURNS

Hydraulic fluid, fluid tubes, fittings and quick couplers can get hot when running the machine and attachments. Be careful when connecting and disconnecting quick couplers.

Connecting Hydraulic Couplers:

Remove any dirt or debris from the surface of both the male and female couplers, and from the outside diameter of the male coupler. Visually check the couplers for corroding, cracking, damage, or excessive wear. If any of these conditions exist, replace the coupler(s).

NOTE: The UltraPlow is supplied with flush face couplers.

NOTE: DO NOT attach hoses to high flow lines on a machine equipped with the High Flow Option.

NOTE: DO NOT hammer on or heat up couplers to connect or disconnect. Doing so will damage couplers resulting in leaks.

Hydraulic Couplers (Cont'd)

Figure 1



Install the UltraPlow male coupler (Item 1) [Figure 1] into the female coupler. Pull on the coupler connection to verify that the male and female couplers are securely fastened.

Install the UltraPlow female coupler (Item 2) [Figure 1] onto the male coupler. Pull on the coupler connection to verify that the male and female couplers are securely fastened.

Checking UltraPlow Operation

NOTE: After installing the UltraPlow, test all functions before operating the UltraPlow in the work area.

⚠ WARNING

AVOID INJURY OR DEATH

- Never start the machine from outside the cab.
- Never operate the machine if any safety device is damaged, disconnected or missing.
- Never exit the machine with the engine running.



IMPORTANT

It is the operator's responsibility to know which machine control operates each function of the attachment prior to operating the attachment in the work area.

Engage the machine's auxiliary hydraulics. (See the machine's Operation Manual for correct procedure).

Raise the engine RPM.

Check the controls of the UltraPlow for proper operation.

Exit the machine. (See "Leaving The Operator's Position" on page 17.)

Adjust the wear shoes (if equipped) to desired height. (See "Wear Shoe Adjustment / Replacement (if equipped)" on page 28.)

NOTE: Wear shoes (if equipped) must be set to the same height.

Move the machine and UltraPlow to the work area.

Operating The Attachment

Operation

WARNING

AVOID INJURY OR DEATH

While operating the machine:

- Always keep seat belt fastened.
- Safety seat bar lowered (if equipped)

Always keep your feet on the pedals or footrests and hands on the controls

Adjust wear shoes (if equipped) to desired height. (See “Wear Shoe Adjustment / Replacement (if equipped)” on page 28.)

Enter the machine. (See “Entering The Operator’s Position” on page 17.)

Start the engine and release the parking brake.

Engage the machine’s auxiliary hydraulics. (See the machine’s Operation Manual for correct procedure.)

Raise the UltraPlow slightly off the ground.

Set the desired left/right blade angle and up/down tilt.

Regulate the scraping ability of the UltraPlow by increasing or decreasing the down pressure applied via the tilt cylinders. The angle of the UltraPlow can be changed at any time by using the auxiliary circuit.

NOTE: Always be sure the A-frame of the UltraPlow is level (parallel) with the ground when plowing, to insure proper cutting edge wear.

NOTE: The machine speed is determined by the depth and density of the material being moved.

NOTE: On extremely uneven ground, raise the boom arms slightly, lower the UltraPlow to the ground using the tilt cylinders, then put the boom arms in the float position (if machine is equipped) to follow the contours of the ground.

Stacking Snow

Figure 2



The UltraPlow has been designed to stack snow if desired [Figure 2].

WARNING

AVOID SERIOUS INJURY OR DEATH

Always be aware of overhead obstacles or power lines when stacking snow.

NOTE: Watch the hose routing carefully so as not to stretch or damage hydraulic hoses.

Attachment Removal

NOTE: Put the UltraPlow on planks or blocks before removing it from the machine to prevent it from settling or sinking in soft / wet ground.

Park the machine and attachment on a flat level surface.

Lower the lift arms and put the UltraPlow flat on the ground.

Stop the engine and engage the parking brake.

Relieve auxiliary hydraulic pressure. (See the machine's Operator's Manual for correct procedure.)

Leave the operator's position. (See "Leaving The Operator's Position" on page 17.)

Disconnect the auxiliary hydraulic hoses. (See "Hydraulic Couplers" on page 18.)

Disengage the attachment locking levers / wedges. (See the machine's Operator's Manual for correct procedure.)

WARNING

AVOID BURNS

Hydraulic fluid, tubes, fittings and quick couplers can get hot during operation. Be careful when connecting and disconnecting hydraulic hoses.

Enter the machine. (See "Entering The Operator's Position" on page 17.)

Start the engine and release the parking brake.

Engage the machine's auxiliary hydraulics. (See the machine's Operation Manual for correct procedure.)

Slowly tilt the machine's mounting plate forward until the attachment mounting frame is free from the machine's mounting plate.

Drive the machine slowly backward, away from the attachment.





| | |
|---|----|
| Maintenance Safety..... | 25 |
| General Maintenance..... | 26 |
| UltraPlow Maintenance..... | 27 |
| Cutting Edge Replacement..... | 27 |
| Cutting Edge Trip Spring Adjustment / Replacement..... | 28 |
| Wear Shoe Adjustment / Replacement (if equipped)..... | 28 |
| Hydraulic Angle Cylinder..... | 28 |
| Side Wing Cutting Edge Replacement (if equipped)..... | 29 |
| Trip Edge Side Wing Cutting Edge Replacement (if equipped)..... | 29 |
| Troubleshooting..... | 30 |
| Storage And Return To Service..... | 31 |



Maintenance Safety

WARNING

AVOID SERIOUS INJURY OR DEATH

Never operate the machine in a closed building. Proper ventilation is required when operating the machine under all circumstances.

WARNING

AVOID SERIOUS INJURY OR DEATH

Stop the engine, release auxiliary hydraulic pressure and disconnect the auxiliary hydraulic hose quick couplers before performing maintenance on the UltraPlow.

- Always keep the work area clean and dry.
- Always use personal protection devices such as eye, hand and hearing protection when performing any service or maintenance.
- A fire extinguisher and first aid kit should be readily accessible while performing maintenance on this machine.
- Always relieve hydraulic system pressure before disconnecting the UltraPlow.
- Always disconnect hydraulic connections between the machine and the UltraPlow before performing maintenance.
- Before working or doing maintenance on this machine, shut off the engine and remove the key. Make sure the machine's wheels are blocked.
- Never work under the machine or attachment unless the machine or equipment is blocked or supported securely.
- Disconnect the battery (both terminals) before welding on any part of the machine. Failure to do so may cause damage to electrical components.
- When working around batteries, remember that all of the exposed metal parts are "live". Never lay a metal object across the terminals because a spark, short circuit, explosion or personal injury may result.
- Battery posts, terminals and related accessories contain lead and lead compounds. **Wash hands after handling.**
- Never search for leaks with your hands. (See "Hydraulic Safety" on page 11.)
- When replacement parts are necessary, genuine factory replacement parts must be used to restore your equipment to original specifications. SnowWolf will not be responsible for injuries or damage caused by use of unapproved parts and / or accessories.
- When completing service or maintenance on this machine, make sure all shields and guards are installed before placing the machine into service.

General Maintenance

 **WARNING**

AVOID SERIOUS INJURY OR DEATH

Before operating or servicing system: Read and understand the machine's owners manual. Follow the warnings and instructions in the manual when making repairs, adjustments, or servicing. Check for correct function after adjustments, repairs or service. Untrained operators and failure to follow instructions can cause injury or death.

To ensure efficient operation, you should inspect, lubricate, and make necessary adjustments and repairs at regular intervals. Keep good maintenance records and adequately clean your machine after each use.

Proper lubrication is important. Follow all lubrication instructions and schedules included in this section.

Daily Inspection:

- All components and hardware to ensure equipment is secure and thoroughly tightened.
- Frame and all welds for cracks or damage.
- Wear plates (if equipped) for wear or damage.
- Mounting frame for proper operation and signs of damage or unusual wear.
- Safety signs and reflectors for damage. Replace any missing or damaged decals.
- Cutting edge for wear or damage.
- Hydraulic hoses and fittings for wear, damage or leaks.

NOTE: Repair or replace any damaged parts.

NOTE: After initial use, or repair/replacement of damaged parts, it is important to check the repaired or replaced parts for proper bolt torque and operation.

UltraPlow Maintenance

WARNING

AVOID SERIOUS INJURY OR DEATH

Always turn off and lockout power before servicing the attachment.

WARNING

AVOID SERIOUS INJURY OR DEATH

Always disconnect hydraulic connections between the attachment and the machine before performing any type of maintenance to the UltraPlow.

WARNING

AVOID SERIOUS INJURY OR DEATH

Securely block up the attachment before working underneath.

Cutting Edge Replacement

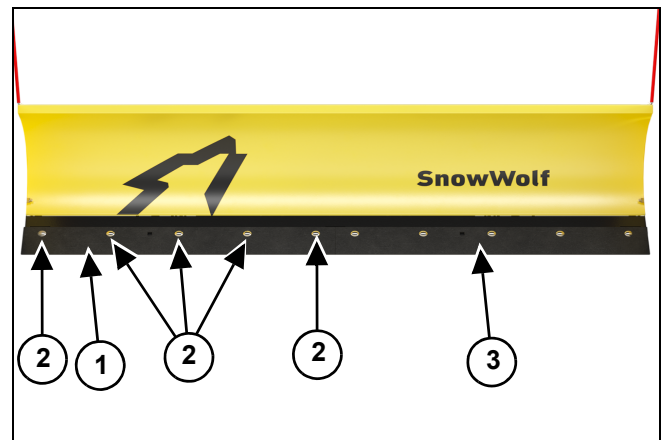
NOTE: Replace or flip the bolt-on cutting edge when it wears within 1/2"- 3/4" of the bolt head securing it to the trip-edge. Replace only with genuine SnowWolf cutting edge and hardware.

1. Park the machine on a level surface with the UltraPlow properly attached.
2. Lower the UltraPlow approximately three to four inches off the ground.
3. Engage the parking brake.

4. Shut off the machine's engine, remove the ignition key (if equipped), wait for all moving parts to come to a stop and relieve all pressure in the hydraulic lines.
5. Block and/or support the UltraPlow with proper lifting device capable of sufficiently supporting the unit's weight.
6. Disconnect hydraulic connections between the attachment and the machine.

NOTE: The cutting edge and hardware quantity will vary depending upon the UltraPlow model.

Figure 1



7. Block the cutting edge (Item 1) [Figure 1], remove the fasteners (Item 2) and remove the cutting edge.

NOTE: Be cautious as the cutting edge and hardware may be sharp.

8. Repeat procedure for the cutting edge (Item 3) [Figure 1].
9. Properly dispose of the old cutting edges and install the new cutting edge's by reversing the steps listed here.

NOTE: Replace worn or damaged fasteners as needed.

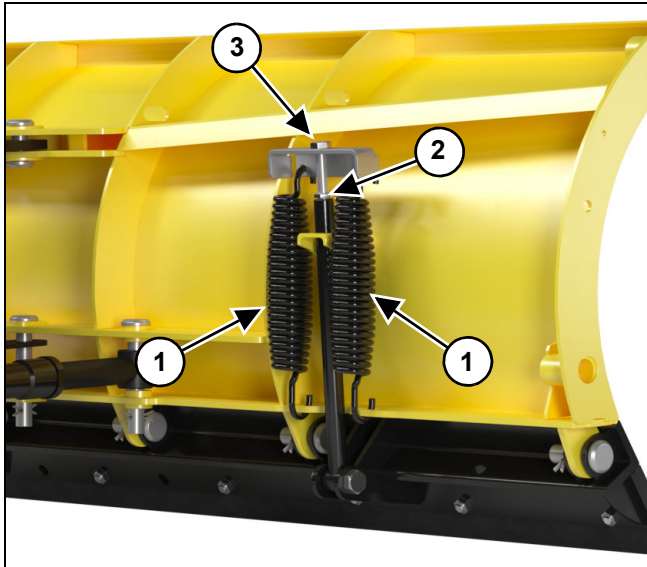
Cutting Edge Trip Spring Adjustment / Replacement



IMPORTANT

Set trip springs after first use, then twice per year thereafter.

Figure 2



Cutting edge trip springs (Item 1) [Figure 2] are adjusted by loosening the jam nut (Item 2) located on the rod between each spring, then tightening or loosening the threaded bolt (Item 3).

Springs are adjusted correctly when there is a .001" gap between the coils. Tighten jam nut.

NOTE: Use grease or "Anti Seize" on the rod and jam nut to prevent rusting.

NOTE: Adjust trip springs evenly on both sides.

Wear Shoe Adjustment / Replacement (if equipped)

Place blocks under the UltraPlow (both sides) to hold the wear shoe off the ground.

Remove the retaining pin, spacers and remove the wear shoe.

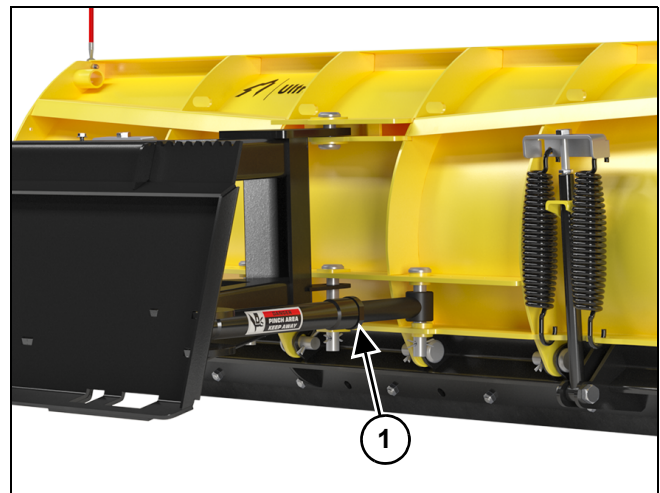
Install or remove spacers for desired blade clearance when installing wear shoe. Install retaining pin.

Repeat procedures on the opposite side.

NOTE: Wear shoes must be set to the same height.

Hydraulic Angle Cylinder

Figure 3



Periodically check the angle cylinder's gland nuts (Item 1) [Figure 3] for tightness. Do not over tighten.

Side Wing Cutting Edge Replacement (if equipped)

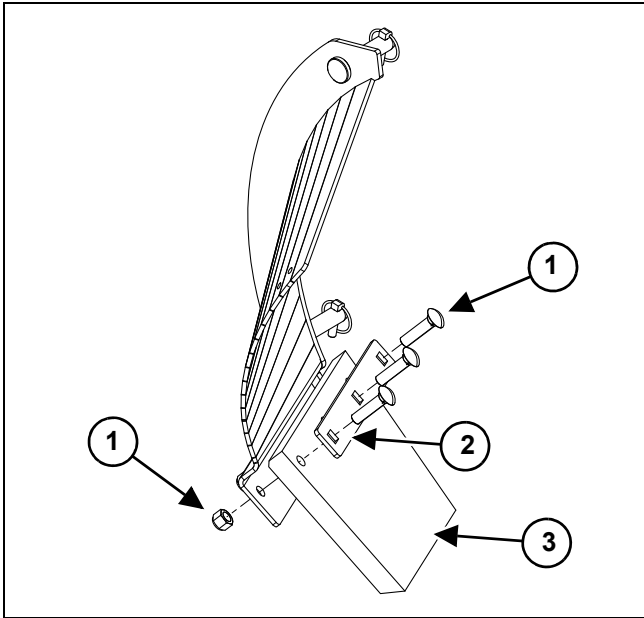
WARNING

AVOID SERIOUS INJURY OR DEATH

Securely block up the attachment before working underneath. Be cautious as the cutting edge and hardware may be sharp.

Place blocks under the UltraPlow (both sides) to hold the side wing cutting edges off the ground.

Figure 4



Remove the nuts and bolts (Item 1) [Figure 4], hold down strip (Item 2) and cutting edge (Item 3).

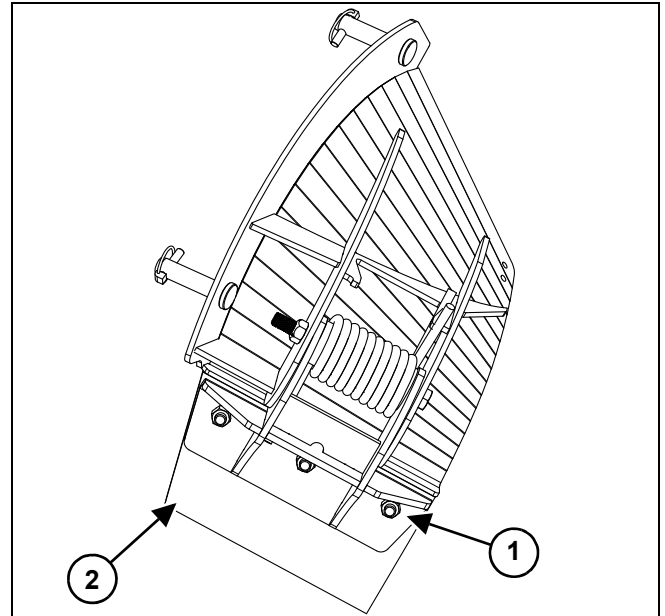
Install new cutting edge, hold down strip, nuts and bolts. Tighten hardware.

Repeat procedures on the opposite side.

Trip Edge Side Wing Cutting Edge Replacement (if equipped)

Place blocks under the UltraPlow (both sides) to hold the side wing cutting edges off the ground.

Figure 5



Remove the nuts and bolts (Item 1) [Figure 5], and cutting edge (Item 2).

Install new cutting edge, nuts and bolts. Tighten hardware.

Repeat procedures on the opposite side.

Troubleshooting

| PROBLEM | CAUSE | CORRECTION |
|---|-------------------------------|--|
| UltraPlow leaving snow behind. | Cutting edge worn or damaged. | Replace the cutting edge. |
| | Blade tilted too high. | Adjust machines lift and tilt controls. |
| | Wear shoes out of adjustment. | Raise or lower wear shoes as needed. |
| UltraPlow does not rotate. | No hydraulic flow. | Check quick coupler connections. Engage auxiliary hydraulics. |
| | Plugged or kinked hose | Replace hose. |
| | Hydraulic fluid low. | Check machine hydraulic oil level. |
| UltraPlow tilt/rotate functions inconsistent. | Hydraulic fluid low. | Check machine hydraulic oil level. |
| | Faulty angle cylinder. | Replace cylinder. |

Storage And Return To Service

Storage

After the seasons use or when the UltraPlow will not be in use for a period of time, perform the following steps.

- Thoroughly wash the UltraPlow.
- Make sure all covers, guards and shields are installed.
- Inspect all components and hardware to ensure everything is secure and thoroughly tightened.
- Inspect the frame and all welds for cracks or damage.
- Apply a light coat of grease to the cylinder rods to prevent rust.
- Inspect the attachment mounting frame for wear or damage.
- Check that all decals and/or reflectors are in good condition and legible. Replace any damaged or missing decals.
- Cap all loose hose ends.
- Place the UltraPlow in a dry protected shelter.

NOTE: Replace or repair any damaged parts.

Return to Service

After the UltraPlow has been in storage, it is necessary to follow a list of items to return the UltraPlow to service.

- Make sure all covers, guards and shields are installed.
- Inspect all components and hardware to ensure everything is secure and thoroughly tightened.
- Inspect the decals and reflectors for missing or damage.
- Install and operate the UltraPlow and check for correct function.
- Check for leaks. Clean and repair as needed.



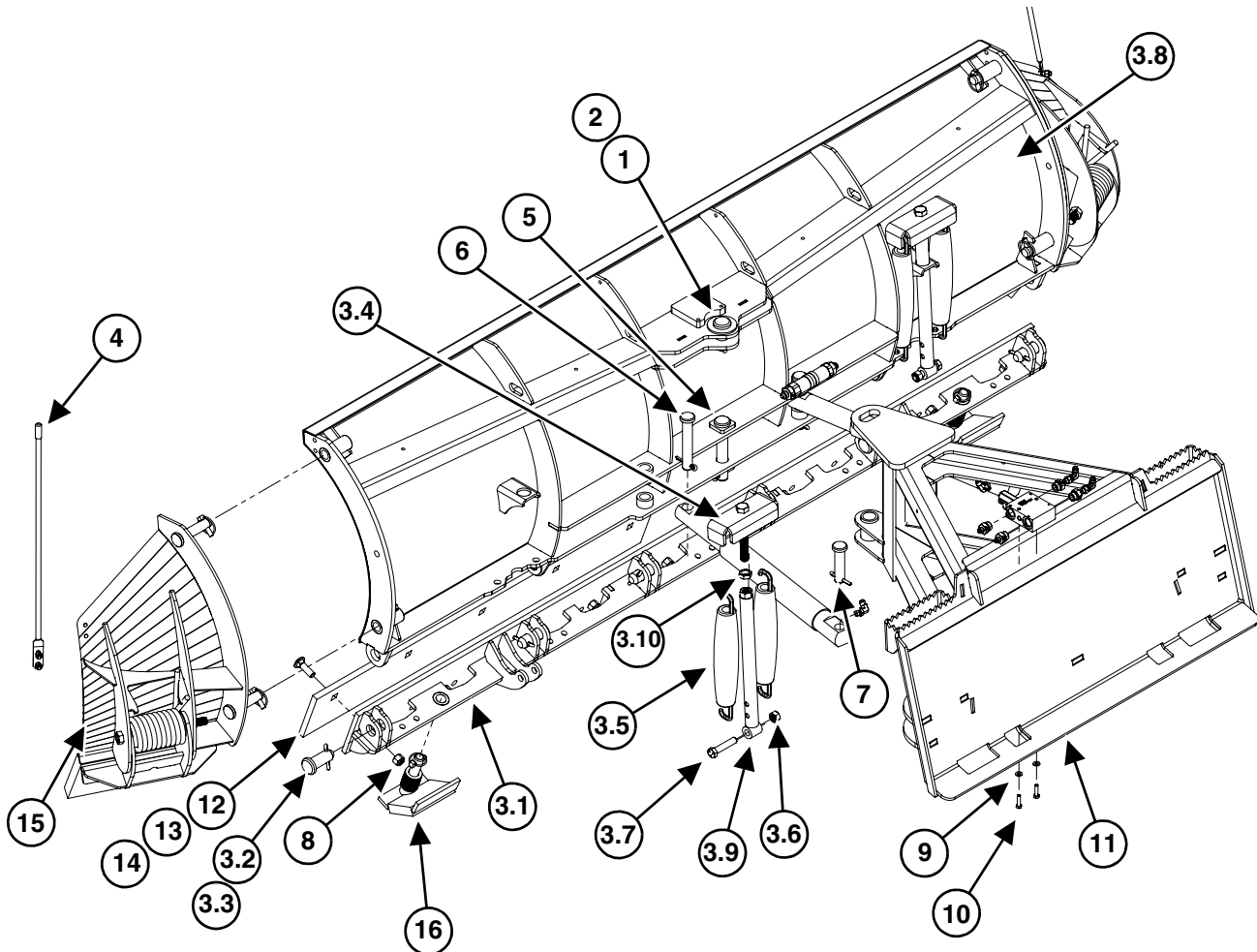
| | |
|---|----|
| Models Ultra 72, Ultra 84, Ultra 96 | 36 |
| Parts | 36 |
| Options | 38 |
| Models Ultra 108, Ultra 120, Ultra 132 | 40 |
| Parts | 40 |
| Options | 42 |
| Models Ultra XT108, Ultra XT120, Ultra XT132 | 44 |
| Parts | 44 |
| Options | 46 |
| Hydraulics | 48 |
| Hoses | 48 |
| Hydraulic Components | 49 |
| No Crossover Relief, (Ultra 72, 84 Models Only) | 50 |
| Trip Edge Generations | 51 |
| Options | 52 |
| Flex Frame | 52 |
| ActivEdge, AR400, 18" Sectional Blade | 53 |
| ActivEdge, AR400, 24" Sectional Blade | 54 |
| ActivEdge, Carbide, AR400, 18" Sectional Blade | 55 |
| ActivEdge, Carbide, AR400, 24" Sectional Blade | 56 |
| WolfWing Side Wing Kit (60003) | 57 |
| Trip Edge WolfWing Side Wing Kit (60003-TE) | 58 |
| Spill Guard | 59 |
| UltraPlow FastTach - 50025 | 60 |
| Curb Guard | 62 |



This page left intentionally blank

Models Ultra 72, Ultra 84, Ultra 96

Parts



| ITEM | PART # | DESCRIPTION | ULTRA-72 QTY | ULTRA-84 QTY | ULTRA-96 QTY |
|------|-----------|---|--------------|--------------|--------------|
| 1 | P40006 | PIN, UPPER PIVOT/TRIP EDGE 1-3/16" x 3" | 1 | 1 | 1 |
| 2 | P40007 | PIN, COTTER, 1/4" x 2" | 6 | 6 | 6 |
| 3 | P40072 | BLADE ASSEMBLY, FOR ULTRA-72 | 1 | - | - |
| | P40084 | BLADE ASSEMBLY, FOR ULTRA-84 | - | 1 | - |
| | P40096 | BLADE ASSEMBLY, FOR ULTRA-96 | - | - | 1 |
| 3.1 | P40002A-3 | 6' TRIP EDGE, GEN 4 | 1 | - | - |
| | P40002-L | 7' TRIP EDGE, GEN 5 | - | 1 | - |
| | P40002-M | 8' TRIP EDGE, GEN 5 | - | - | 1 |
| 3.2 | P40006 | PIN, UPPER PIVOT/TRIP EDGE 1-3/16" x 3" | 6 | 6 | 6 |
| 3.3 | P40007 | PIN, COTTER, 1/4" x 2", | 6 | 6 | 6 |
| 3.4 | P40009-B | SPRING ADJUSTMENT ASM | 2 | 2 | 2 |

| ITEM | PART # | DESCRIPTION | ULTRA-72 QTY | ULTRA-84 QTY | ULTRA-96 QTY |
|--|---------|--|--------------|--------------|--------------|
| 3.5 | P40010B | SPRING, TRIP, 6'-10' NEW STYLE ULTRAPLOW (15" LONG) | 4 | 4 | 4 |
| 3.6 | P40012 | NUT, LOCK, 5/8-11, GRADE C | 2 | 2 | 2 |
| 3.7 | P40013 | BOLT, HEX, 5/8-11 x 3", GRADE 8 | 2 | 2 | 2 |
| 3.8 | P40014 | BLADE WELDMENT ONLY, ULTRA-72 (NO SPRINGS OR TRIP EDGE) | 1 | 1 | 1 |
| | P40015 | BLADE WELDMENT ONLY, ULTRA-84 (NO SPRINGS OR TRIP EDGE) | 1 | 1 | 1 |
| | P40016 | BLADE WELDMENT ONLY, ULTRA-96 (NO SPRINGS OR TRIP EDGE) | 1 | 1 | 1 |
| 3.9 | P40026 | SPRING ADJUSTMENT ROD ASM | 2 | 2 | 2 |
| 3.10 | P60242 | NUT, JAM, 3/4-10, ZINC, GRADE 8 | 2 | 2 | 2 |
| 4 | P50001 | BLADE MARKER GUIDE SET | 1 | 1 | 1 |
| 5 | P50003 | PIN, LOWER PIVOT 1-1/8" x 6-3/4" | 1 | 1 | 1 |
| 6 | P50004 | PIN, RAM ANCHOR (BLADE END) ULTRAPLOW 1" x 6", w/ COTTER PIN | 2 | 2 | 2 |
| 7 | P50005 | PIN, RAM ANCHOR (FRAME END) ULTRAPLOW 1" x 4", w/ COTTER PIN | 2 | 2 | 2 |
| 8 | P60030 | NUT, HEX, NYLOCK, 5/8-11 | 8 | 9 | 10 |
| *9 | P60092 | WASHER, FLAT, 5/16" | 2 | 2 | 2 |
| *10 | P60214 | BOLT, HEX, 5/16-18 x 1-1/4", GRADE 5 | 2 | 2 | 2 |
| * Parts not used if crossover relief valve option is not installed on the UltraPlow 72 & 84. See No Crossover Relief parts on page 50. | | | | | |
| For items 11 or above: See "Options" on page 38. | | | | | |
| For hydraulic hoses: See "Hoses" on page 48. | | | | | |
| For hydraulic components: See "Hydraulic Components" on page 49. | | | | | |

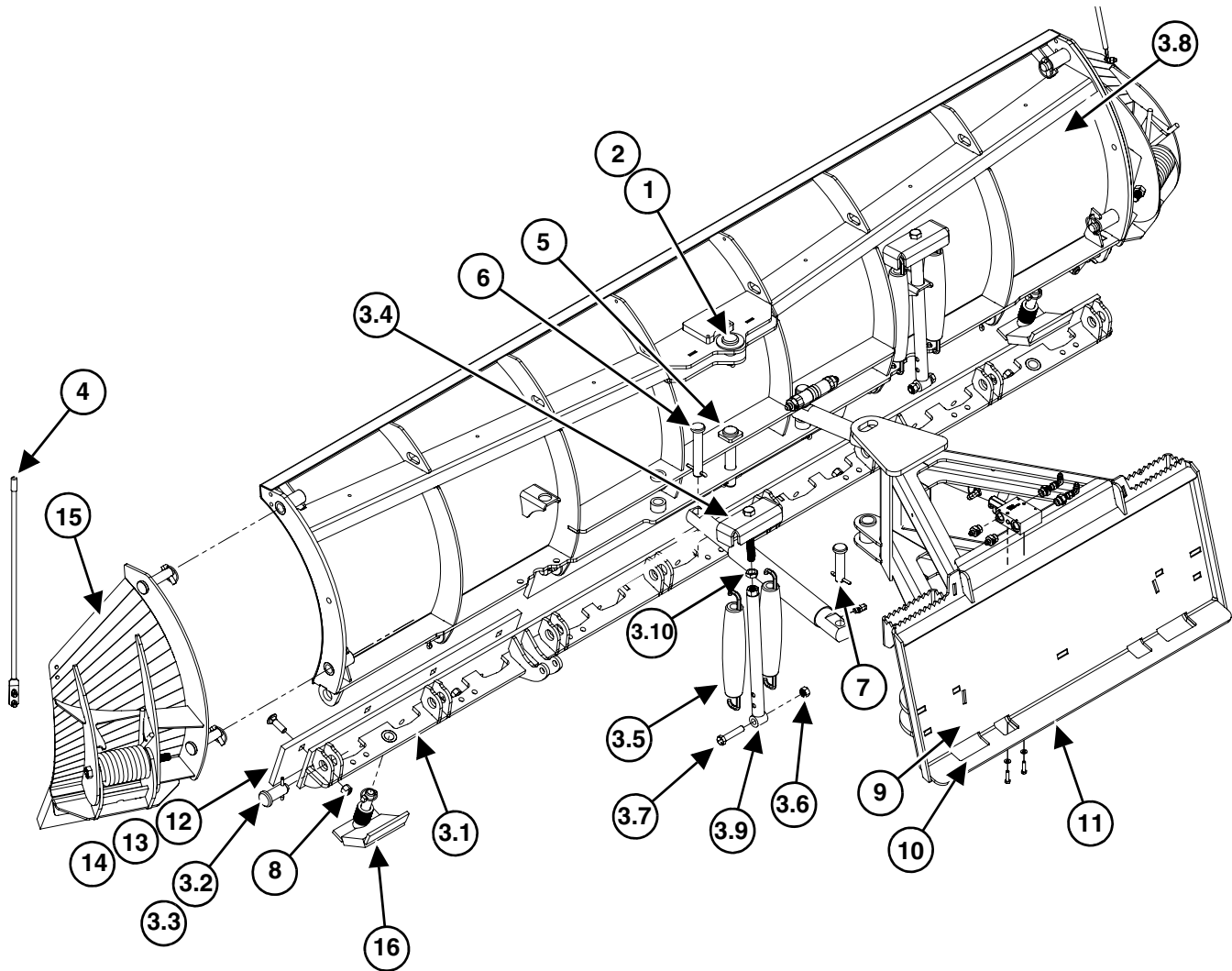
Options

| ITEM | PART # | DESCRIPTION | ULTRA-72 QTY | ULTRA-84 QTY | ULTRA-96 QTY |
|------|---|---|--------------|--------------|--------------|
| | FRAME | | | | |
| NS | P50020 | FLEX FRAME, ASSEMBLY, See Page 52 | 1 | 1 | 1 |
| NS | P50031 | 3 POINT FRAME | 1 | 1 | 1 |
| 11 | P60000-1 | ULTRA A-FRAME | 1 | 1 | 1 |
| | MAIN EDGE - (See Trip Edges on page 51) | | | | |
| | Steel Options | | | | |
| 12 | P50011-A | CENTER PUNCH CUTTING EDGE KIT, 6' w/ HW (GEN 1, 2 OR 3 TRIP EDGE) | 1 | 0 | 0 |
| | P50011-C | CENTER PUNCH CUTTING EDGE KIT, 7' w/ HW (GEN 1, 2 OR 3 TRIP EDGE) | 0 | 1 | 0 |
| | P50011-E | CENTER PUNCH CUTTING EDGE KIT, 8' w/ HW (GEN 1, 2 OR 3 TRIP EDGE) | 0 | 0 | 1 |
| 13 | P50011-K | TOP PUNCH CUTTING EDGE KIT, 6' w/ HW (GEN 4 OR 5 TRIP EDGE) | 1 | 0 | 0 |
| | P50011-L | TOP PUNCH CUTTING EDGE KIT, 7' w/ HW (GEN 4 OR 5 TRIP EDGE) | 0 | 1 | 0 |
| | P50011-M | TOP PUNCH CUTTING EDGE KIT, 8' w/ HW (GEN 4 OR 5 TRIP EDGE) | 0 | 0 | 1 |
| | SoftTouch Options - (Works with any Trip Edge) | | | | |
| 14 | P50012-A1 | 6' SOFTTOUCH CUTTING EDGE KIT, w/ HW | 1 | 0 | 0 |
| | P50012-C1 | 7' SOFTTOUCH CUTTING EDGE KIT, w/ HW | 0 | 1 | 0 |
| | P50012-E1 | 8' SOFTTOUCH CUTTING EDGE KIT, w/ HW | 0 | 0 | 1 |
| | ActivEdge, AR400 | | | | |
| NS | P50011-L-REK | 7' ActivEdge CUTTING KIT, w/ HW | 0 | 1 | 0 |
| NS | P50011-M-REK | 8' ActivEdge CUTTING KIT, w/ HW | 0 | 0 | 1 |
| | CARBIDE ActivEdge, AR400 WITH CARBIDE | | | | |
| NS | P50014-L-REK | 7' ActivEdge CUTTING KIT, w/ HW | 0 | 1 | 0 |
| NS | P50014-M-REK | 8' ActivEdge CUTTING KIT, w/ HW | 0 | 0 | 1 |
| | ActivEdge, AR400 UPGRADE | Requires Generation 5 Trip Edge (not included) | | | |
| | P50011-L-SEC | 7' ActivEdge UPGRADE KIT | 0 | 1 | 0 |
| | P50011-M-SEC | 8' ActivEdge UPGRADE KIT | 0 | 0 | 1 |
| | ActivEdge - W/ CARBIDE UPGRADE | Requires Generation 5 Trip Edge (not included) | | | |
| | P50014-L | 7' ActivEdge UPGRADE KIT, w/ CARBIDE | 0 | 1 | 0 |
| | P50014-M | 8' ActivEdge UPGRADE KIT, w/ CARBIDE | 0 | 0 | 1 |
| | WING OPTIONS | | | | |
| NS | 60003 | WOLFWING SIDE WING KIT | 1 | 1 | 1 |
| 15 | 60003-TE | TRIP-EDGE WOLFWING SIDE WING KIT | 1 | 1 | 1 |
| | FASTTACH | | | | |
| NS | 50025 | FASTTACH™ QUICK RELEASE | 1 | 1 | 1 |

| ITEM | PART # | DESCRIPTION | ULTRA-72 QTY | ULTRA-84 QTY | ULTRA-96 QTY |
|------|-----------------------------|---------------------------------------|--------------|--------------|--------------|
| | WEAR SHOE | | | | |
| 16 | P40003-S | WEAR SHOW SET, W/ SPACERS & KLIK PINS | 1 | 1 | 1 |
| NS | P50013 | CURB GUARD KIT, w/ HW See Page 62 | 1 | 1 | 1 |
| | SPILL GUARD (OPTION) | | | | |
| NS | P60276-K | 7' SPILL GUARD KIT, w/ HW | 0 | 1 | 0 |
| NS | P60270-K | 8' SPILL GUARD KIT, w/ HW | 0 | 0 | 1 |

Models Ultra 108, Ultra 120, Ultra 132

Parts



| ITEM | PART # | DESCRIPTION | ULTRA-108 QTY | ULTRA-120 QTY | ULTRA-132 QTY |
|------|----------|---|---------------|---------------|---------------|
| 1 | P40006 | PIN, UPPER PIVOT/TRIP EDGE 1-3/16" x 3" | 1 | 1 | 1 |
| 2 | P40007 | PIN, COTTER, 1/4" x 2" | 1 | 1 | 1 |
| 3 | P40108 | BLADE ASSEMBLY, FOR ULTRA-108 | 1 | - | - |
| | P40120 | BLADE ASSEMBLY, FOR ULTRA-120 | - | 1 | - |
| | P40132 | BLADE ASSEMBLY, FOR ULTRA-132 | - | - | 1 |
| 3.1 | P40002-N | 9' TRIP EDGE, GEN 5 | 1 | - | - |
| | P40002-O | 10' TRIP EDGE, GEN 5 | - | 1 | - |
| | P40002-P | 11' TRIP EDGE, GEN 5 | - | - | 1 |
| 3.2 | P40006 | PIN, UPPER PIVOT/TRIP EDGE 1-3/16" x 3" | 6 | 8 | 8 |
| 3.3 | P40007 | PIN, COTTER, 1/4" x 2" | 6 | 8 | 8 |

| ITEM | PART # | DESCRIPTION | ULTRA-108 QTY | ULTRA-120 QTY | ULTRA-132 QTY |
|--|----------|--|---------------|---------------|---------------|
| 3.4 | P40009-B | SPRING ADJUSTMENT ASM | 2 | 2 | 2 |
| 3.5 | P40010B | SPRING, TRIP, 6'-10' NEW STYLE ULTRAPLOW (15" LONG) | 4 | 4 | 4 |
| 3.6 | P40012 | NUT, LOCK, 5/8"-11, GRADE C | 2 | 2 | 2 |
| 3.7 | P40013 | BOLT, HEX, 5/8"-11 x 3" GRADE 8 | 2 | 2 | 2 |
| 3.8 | P40017 | BLADE WELDMENT ONLY, ULTRA-108 (NO SPRINGS OR TRIP EDGE) | 1 | - | - |
| | P40018 | BLADE WELDMENT ONLY, ULTRA-120 (NO SPRINGS OR TRIP EDGE) | - | 1 | - |
| | P40019 | BLADE WELDMENT ONLY, ULTRA-132 (NO SPRINGS OR TRIP EDGE) | - | - | 1 |
| 3.9 | P40026 | SPRING ADJUSTMENT ROD ASM | 2 | 2 | 2 |
| 3.10 | P60242 | NUT, JAM, 3/4"-10, GRADE 8 | 2 | 2 | 2 |
| 4 | P50001 | BLADE MARKER GUIDE SET | 1 | 1 | 1 |
| 5 | P50003 | PIN, LOWER PIVOT 1-1/8" x 6-3/4" | 1 | 1 | 1 |
| 6 | P50004 | PIN, RAM ANCHOR (BLADE END) ULTRAPLOW 1" x 6" | 2 | 2 | 2 |
| 7 | P50005 | PIN, RAM ANCHOR (FRAME END) ULTRAPLOW 1" x 4" | 2 | 2 | 2 |
| 8 | P60030 | NUT, HEX, NYLOCK, 5/8"-11 | 12 | 13 | 14 |
| 9 | P60092 | WASHER, FLAT, 5/16" SAE | 2 | 2 | 2 |
| 10 | P60214 | BOLT, HEX, 5/16"-18 x 1-1/4" GRADE 5 | 2 | 2 | 2 |
| For items 11 or above: See "Options" on page 42. | | | | | |
| For hydraulic hoses: See "Hoses" on page 48. | | | | | |
| For hydraulic components: See "Hydraulic Components" on page 49. | | | | | |

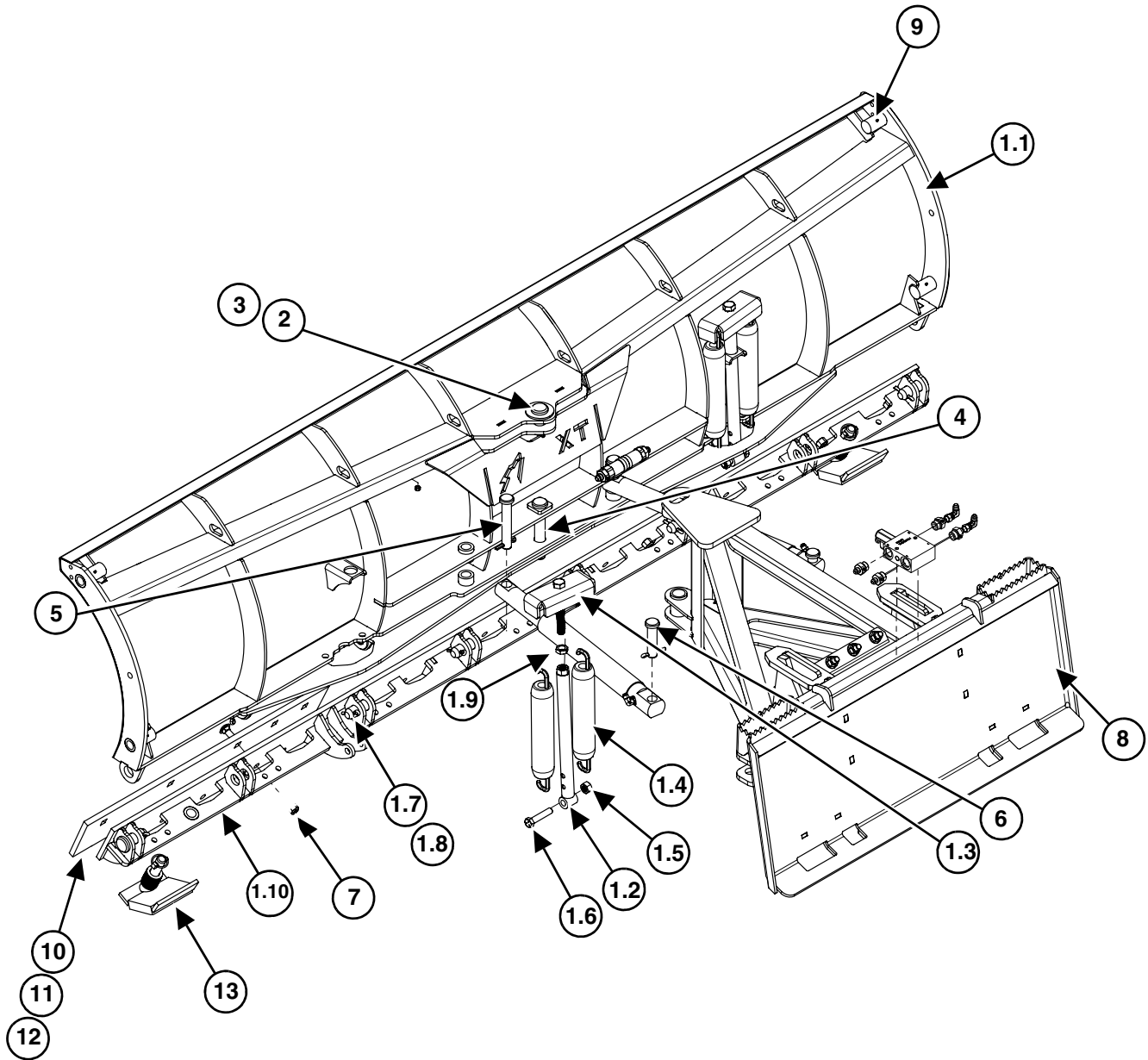
Options

| ITEM | PART # | DESCRIPTION | ULTRA-108 QTY | ULTRA-120 QTY | ULTRA-132 QTY |
|---|--------------|--|---------------|---------------|---------------|
| FRAME | | | | | |
| NS | P50020 | FLEX FRAME, ASSEMBLY, See Page 52 | 1 | 1 | 1 |
| NS | P50031 | 3 POINT FRAME | 1 | 1 | 1 |
| 11 | P60000-1 | ULTRA A-FRAME | 1 | 1 | 1 |
| MAIN EDGE Steel Options See Trip Edges on page 51. | | | | | |
| 12 | P50011-G | CENTER PUNCH CUTTING EDGE KIT, 9' w/ HW (GEN 1, 2 OR 3 TRIP EDGE) | 1 | 0 | 0 |
| | P50011-H | CENTER PUNCH CUTTING EDGE KIT, 10' w/ HW (GEN 1, 2 OR 3 TRIP EDGE) | 0 | 1 | 0 |
| | P50011-I | CENTER PUNCH CUTTING EDGE KIT, 11' w/ HW (GEN 1, 2 OR 3 TRIP EDGE) | 0 | 0 | 1 |
| 13 | P50011-N | TOP PUNCH CUTTING EDGE KIT, 9' w/ HW (GEN 4 OR 5 TRIP EDGE) | 1 | 0 | 0 |
| | P50011-O | TOP PUNCH CUTTING EDGE KIT, 10' w/ HW (GEN 4 OR 5 TRIP EDGE) | 0 | 1 | 0 |
| | P50011-P | TOP PUNCH CUTTING EDGE KIT, 11' w/ HW (GEN 4 OR 5 TRIP EDGE) | 0 | 0 | 1 |
| ActivEdge, AR400 | | | | | |
| NS | P50011-N-REK | 9' ActivEdge KIT, w/ HW | 1 | 0 | 0 |
| NS | P50011-O-REK | 10' ActivEdge KIT, w/ HW | 0 | 1 | 0 |
| NS | P50014-P-REK | 11' ActivEdge KIT, w/ HW | 0 | 0 | 1 |
| CARBIDE ActivEdge, AR400 WITH CARBIDE | | | | | |
| NS | P50014-N-REK | 9' ActivEdge KIT, w/ HW | 1 | 0 | 0 |
| NS | P50014-O-REK | 10' ActivEdge KIT, w/ HW | 0 | 1 | 0 |
| NS | P50014-P-REK | 11' ActivEdge KIT, w/ HW | 0 | 0 | 1 |
| ActivEdge AR400 UPGRADE Requires Generation 5 Trip Edge (not included) | | | | | |
| NS | P50011-N-SEC | 9' ActivEdge UPGRADE KIT | 1 | 0 | 0 |
| NS | P50011-O-SEC | 10' ActivEdge UPGRADE KIT | 0 | 1 | 0 |
| NS | P50011-P-SEC | 11' ActivEdge UPGRADE KIT | 0 | 0 | 1 |
| ActivEdge W/ CARBIDE UPGRADE Requires Generation 5 Trip Edge (not included) | | | | | |
| NS | P50014-N | 9' ActivEdge UPGRADE KIT w/ CARBIDE | 1 | 0 | 0 |
| NS | P50014-O | 10' ActivEdge UPGRADE KIT w/ CARBIDE | 0 | 1 | 0 |
| NS | P50014-P | 11' ActivEdge UPGRADE KIT w/ CARBIDE | 0 | 0 | 1 |
| SPILL GUARD (OPTION) | | | | | |
| NS | P60271-K | 9' SPILL GUARD KIT, w/ HW | 1 | 0 | 0 |
| NS | P60272-K | 10' SPILL GUARD KIT, w/ HW | 0 | 1 | 0 |
| NS | P60273-K | 11' SPILL GUARD KIT, w/ HW | 0 | 0 | 1 |

| ITEM | PART # | DESCRIPTION | ULTRA-108 QTY | ULTRA-120 QTY | ULTRA-132 QTY |
|---|-----------|---------------------------------------|---------------|---------------|---------------|
| SoftTouch Options (Works with any Trip Edge) | | | | | |
| 14 | P50012-G1 | 9' SOFTTOUCH CUTTING EDGE KIT, w/ HW | 1 | 0 | 0 |
| | P50012-H1 | 10' SOFTTOUCH CUTTING EDGE KIT, w/ HW | 0 | 1 | 0 |
| | P50012-I1 | 11' SOFTTOUCH CUTTING EDGE KIT, w/ HW | 0 | 0 | 1 |
| WING OPTIONS | | | | | |
| NS | 60003 | WOLFWING SIDE WING KIT | 1 | 1 | 1 |
| 15 | 60003-TE | TRIP-EDGE WOLFWING SIDE WING KIT | 1 | 1 | 1 |
| FASTTACH - SEE PAGE 60 FOR PARTS | | | | | |
| NS | 50025 | FASTTACH™ QUICK RELEASE | 1 | 1 | 1 |
| WEAR SHOE | | | | | |
| 16 | P40003-S | WEAR SHOE SET, W/ SPACERS & KLIK PINS | 1 | 1 | 1 |
| NS | P50013 | CURB GUARD KIT, See Page 62 | 1 | 1 | 1 |

Models Ultra XT108, Ultra XT120, Ultra XT132

Parts



| ITEM | PART # | DESCRIPTION | ULTRA XT-108 QTY | ULTRA XT-120 QTY | ULTRA XT-132 QTY |
|------|----------|-----------------------------|------------------|------------------|------------------|
| 1 | P40108XT | BLADE ASSEMBLY, ULTRAXT-108 | 1 | 0 | 0 |
| | P40120XT | BLADE ASSEMBLY, ULTRAXT-120 | 0 | 1 | 0 |
| | P40132XT | BLADE ASSEMBLY, ULTRAXT-132 | 0 | 0 | 1 |

| ITEM | PART # | DESCRIPTION | ULTRA XT-108 QTY | ULTRA XT-120 QTY | ULTRA XT-132 QTY |
|--|----------|--|------------------------|------------------------|------------------------|
| 1.1 | P40017XT | BLADE WELDMENT ONLY, (NO SPRINGS OR TRIP EDGE) | 1 | 0 | 0 |
| | P40018XT | BLADE WELDMENT ONLY, (NO SPRINGS OR TRIP EDGE) | 0 | 1 | 0 |
| | P40019XT | BLADE WELDMENT ONLY, (NO SPRINGS OR TRIP EDGE) | 0 | 0 | 1 |
| 1.2 | P40026 | SPRING ADJUSTMENT ROD ASM | 2 | 2 | 2 |
| 1.3 | P40009-B | SPRING ADJUSTMENT ASM | 2 | 2 | 2 |
| 1.4 | P40010B | SPRING, TRIP, 6'-10' NEW STYLE | 4 | 4 | 4 |
| 1.5 | P40012 | NUT, LOCK, 5/8-11, ZINC, GR C | 2 | 2 | 2 |
| 1.6 | P40013 | BOLT, HEX, 5/8-11 x 3, YELLOW ZINC, GRAD | 2 | 2 | 2 |
| 1.7 | P40006 | PIN, UPPER PIVOT/TRIP EDGE 1-3/16" x 3" | 6 | 8 | 8 |
| 1.8 | P40007 | PIN, COTTER, 1/4" x 2", ZINC | 6 | 8 | 8 |
| 1.9 | P60242 | NUT, JAM, 3/4-10, ZINC | 2 | 2 | 2 |
| 1.10 | P40002-N | 9' TRIP EDGE, GEN 5 | 1 | 0 | 0 |
| | P40002-O | 10' TRIP EDGE, GEN 5 | 0 | 1 | 0 |
| | P40002-P | 11' TRIP EDGE, GEN 5 | 0 | 0 | 1 |
| 2 | P40006 | PIN, UPPER PIVOT/TRIP EDGE 1-3/16" x 3" | 1 | 1 | 1 |
| 3 | P40007 | PIN, COTTER, 1/4" x 2", ZINC | 1 | 1 | 1 |
| 4 | P50003 | PIN, LOWER PIVOT 1-1/8" x 6-3/4" | 1 | 1 | 1 |
| 5 | P50004 | PIN, RAM ANCHOR (BLADE END) 1" x 6" | 2 | 2 | 2 |
| 6 | P50005 | PIN, RAM ANCHOR (FRAME END) 1" x 4" | 2 | 2 | 2 |
| 7 | P60030 | NUT, HEX, NYLOCK, 5/8-11, ZINC | 12 | 13 | 13 |
| 8 | P50020 | FLEX FRAME, ASSEMBLY | 1 | 1 | 1 |
| 9 | P25562 | GREASE ZERK, 3/16" POUND IN | 4 | 4 | 4 |
| For items above 9: See "Options" on page 46. | | | | | |
| For hydraulic hoses: See "Hoses" on page 48. | | | | | |
| For hydraulic components: See "Hydraulic Components" on page 49. | | | | | |

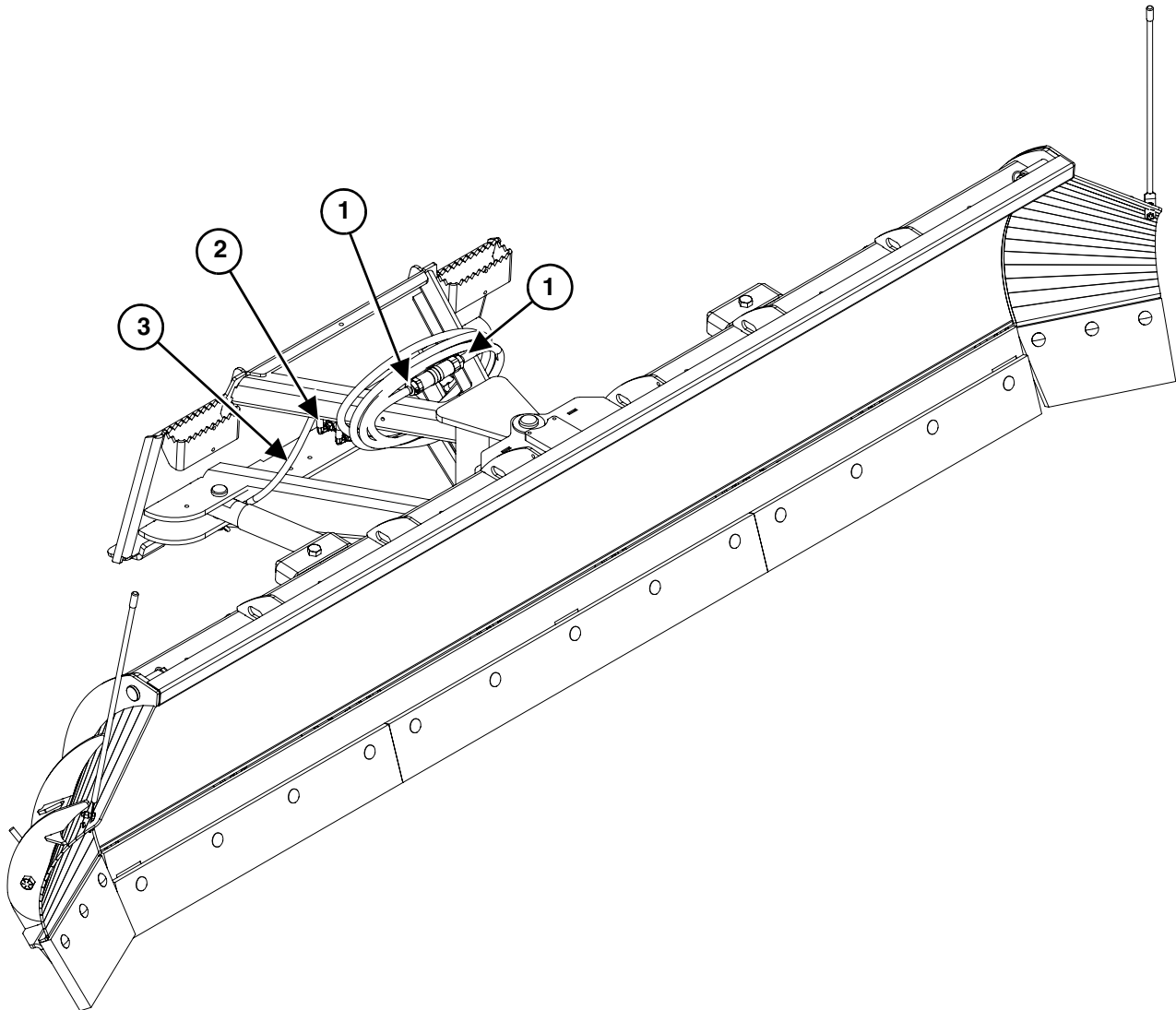
Options

| ITEM | PART # | DESCRIPTION | ULTRA-XT-108 QTY | ULTRA-XT-120 QTY | ULTRA-XT-132 QTY |
|------|--|--|------------------|------------------|------------------|
| | FRAME | | | | |
| 8 | P50020 | FLEX FRAME, ASSEMBLY, See Page 52 | 1 | 1 | 1 |
| NS | P50031 | 3 POINT FRAME | 1 | 1 | 1 |
| NS | P60000-1 | ULTRA A-FRAME | 1 | 1 | 1 |
| | MAIN EDGE Steel Options See Trip Edges on page 51. | | | | |
| 10 | P50011-G | CENTER PUNCH CUTTING EDGE KIT, 9' w/ HW (GEN 1, 2 OR 3 TRIP EDGE) | 1 | 0 | 0 |
| | P50011-H | CENTER PUNCH CUTTING EDGE KIT, 10' w/ HW (GEN 1, 2 OR 3 TRIP EDGE) | 0 | 1 | 0 |
| | P50011-I | CENTER PUNCH CUTTING EDGE KIT, 11' w/ HW (GEN 1, 2 OR 3 TRIP EDGE) | 0 | 0 | 1 |
| 11 | P50011-N | TOP PUNCH CUTTING EDGE KIT, 9' w/ HW (GEN 4 OR 5 TRIP EDGE) | 1 | 0 | 0 |
| | P50011-O | TOP PUNCH CUTTING EDGE KIT, 10' w/ HW (GEN 4 OR 5 TRIP EDGE) | 0 | 1 | 0 |
| | P50011-P | TOP PUNCH CUTTING EDGE KIT, 11' w/ HW (GEN 4 OR 5 TRIP EDGE) | 0 | 0 | 1 |
| | SoftTouch Options (Works with any Trip Edge) | | | | |
| 12 | P50012-G1 | 9' SOFTTOUCH CUTTING EDGE KIT, w/ HW | 1 | 0 | 0 |
| | P50012-H1 | 10' SOFTTOUCH CUTTING EDGE KIT, w/ HW | 0 | 1 | 0 |
| | P50012-I1 | 11' SOFTTOUCH CUTTING EDGE KIT, w/ HW | 0 | 0 | 1 |
| | ActivEdge, AR400 | | | | |
| NS | P50011-N-REK | 9' ActivEdge KIT, w/ HW | 1 | 0 | 0 |
| NS | P50011-O-REK | 10' ActivEdge KIT, w/ HW | 0 | 1 | 0 |
| NS | P50011-P-REK | 11' ActivEdge KIT, w/ HW | 0 | 0 | 1 |
| | CARBIDE ActivEdge, AR400 WITH CARBIDE | | | | |
| NS | P50014-N-REK | 9' ActivEdge KIT, w/ HW | 1 | 0 | 0 |
| NS | P50014-O-REK | 10' ActivEdge KIT, w/ HW | 0 | 1 | 0 |
| NS | P50014-P-REK | 11' ActivEdge KIT, w/ HW | 0 | 0 | 1 |
| | ActivEdge AR400 UPGRADE Requires Generation 5 Trip Edge (not included) | | | | |
| NS | P50011-N-SEC | 9' ActivEdge UPGRADE KIT | 1 | 0 | 0 |
| NS | P50011-O-SEC | 10' ActivEdge UPGRADE KIT | 0 | 1 | 0 |
| NS | P50011-P-SEC | 11' ActivEdge UPGRADE KIT | 0 | 0 | 1 |

| ITEM | PART # | DESCRIPTION | ULTRA-XT-108 QTY | ULTRA-XT-120 QTY | ULTRA-XT-132 QTY |
|------|---|--|------------------|------------------|------------------|
| | ActivEdge W/ CARBIDE UPGRADE | Requires Generation 5 Trip Edge (not included) | | | |
| NS | P50014-N | 9' ActivEdge UPGRADE KIT, w/ CARBIDE | 1 | 0 | 0 |
| NS | P50014-O | 10' ActivEdge UPGRADE KIT, w/ CARBIDE | 0 | 1 | 0 |
| NS | P50014-P | 11' ActivEdge UPGRADE KIT, w/ CARBIDE | 0 | 0 | 1 |
| | SPILL GUARD (OPTION) | | | | |
| NS | P60271-K | 9' SPILL GUARD KIT, w/ HW | 1 | 0 | 0 |
| NS | P60272-K | 10' SPILL GUARD KIT, w/ HW | 0 | 1 | 0 |
| NS | P60273-K | 11' SPILL GUARD KIT, w/ HW | 0 | 0 | 1 |
| | WING OPTIONS | | | | |
| NS | 60003 | WOLFWING SIDE WING KIT | 1 | 1 | 1 |
| NS | 60003-TE | TRIP-EDGE WOLFWING SIDE WING KIT | 1 | 1 | 1 |
| | FASTTACH - SEE PAGE 60 FOR PARTS | | | | |
| NS | 50025 | FASTTACH™ QUICK RELEASE | 1 | 1 | 1 |
| | WEAR SHOE | | | | |
| 13 | P40003-S | WEAR SHOE SET, W/ SPACERS & KLIK PINS | 1 | 1 | 1 |
| NS | P50013 | CURB GUARD KIT, See Page 62 | 1 | 1 | 1 |

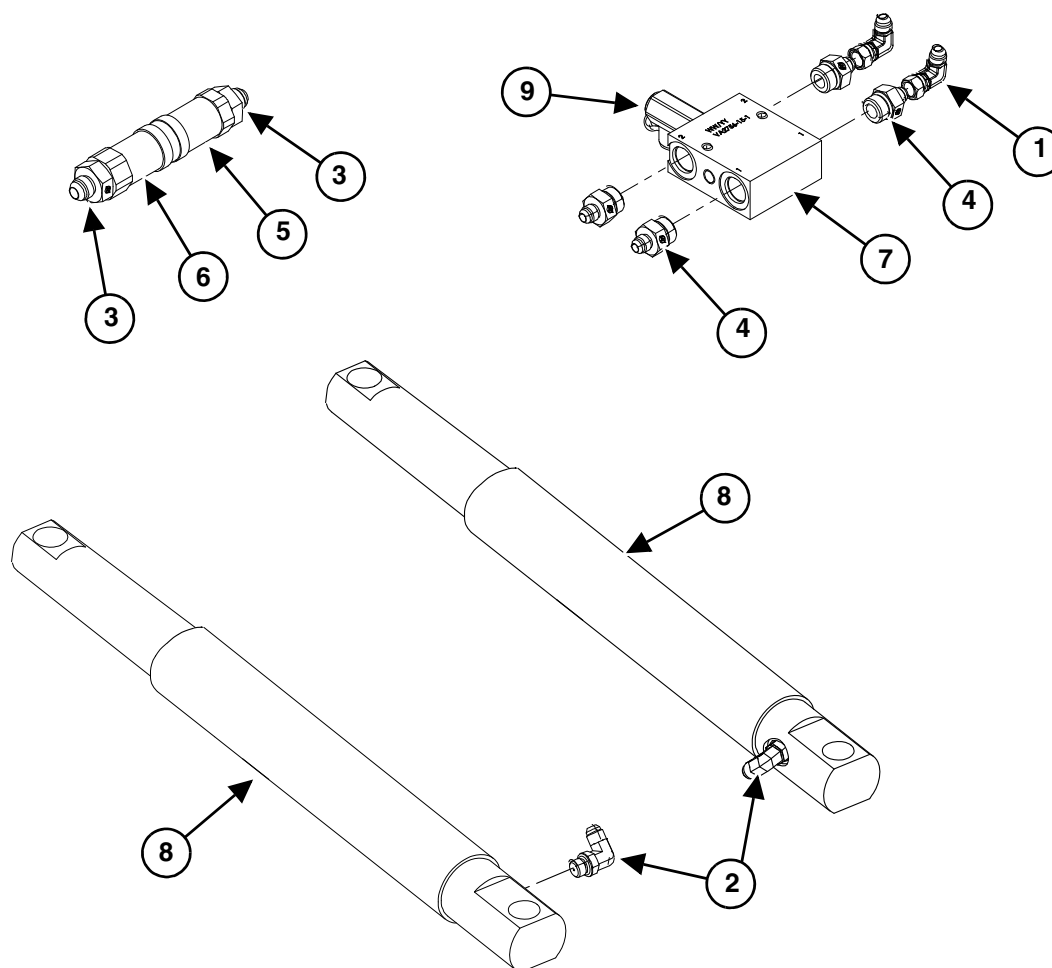
Hydraulics

Hoses



| ITEM | PART # | DESCRIPTION | QTY |
|------|----------|---|-----|
| 1 | P50008 | HOSE, 3/8" x 78", 4800 PSI, 6FJIC-8FJIC | 2 |
| 2 | P50008-E | HOSE, 3/8" x 20", 4800 PSI, 6FJIC-6FJIC | 1 |
| 3 | P60082 | HOSE, 3/8" x 38", 4800 PSI, 6FJIC-6FJIC | 1 |

Hydraulic Components



| ITEM | PART # | DESCRIPTION | QTY |
|------|----------|--|-----|
| *1 | P25063 | FITTING, SWIVEL, 90DEG, #6 FJICX-#6 MJIC, (6500-06-06) | 2 |
| 2 | P50007 | FITTING, ELBOW, 6MJIC - 6MORB (6801R-06-06-.07) (RESTRICTED) | 2 |
| 3 | P50009-A | FITTING, #8 MJIC X #12 MORB | 2 |
| *4 | P50009-B | FITTING, #6 MJIC-#10 MORB | 4 |
| 5 | P50010F | COUPLER, 1/2" FEMALE FLAT FACE 1/2" BODY x 3/4" PORT | 1 |
| 6 | P50010M | COUPLER, 1/2" MALE FLAT FACE 1/2" BODY x 3/4" PORT | 1 |
| *7 | P60002 | RELIEF VALVE, CROSSOVER, NO HOSES | 1 |
| 8 | P50006-B | ANGLE CYLINDER, 2" ROD | 2 |
| 9 | P60131 | CROSSOVER RELIEF VALVE 2500 PSI | 1 |

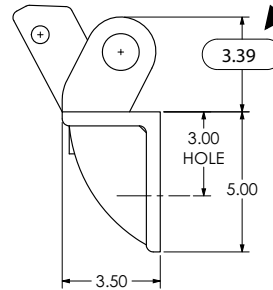
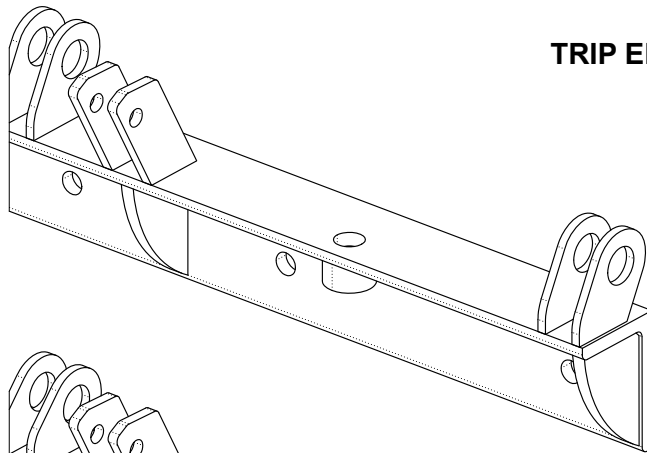
* Parts not used if crossover relief valve option is not installed on the UltraPlow 72 & 84. See No Crossover Relief parts on page 50.

No Crossover Relief, (Ultra 72, 84 Models Only)

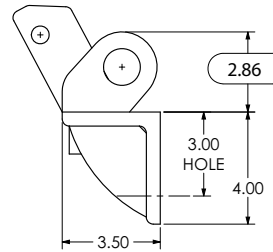
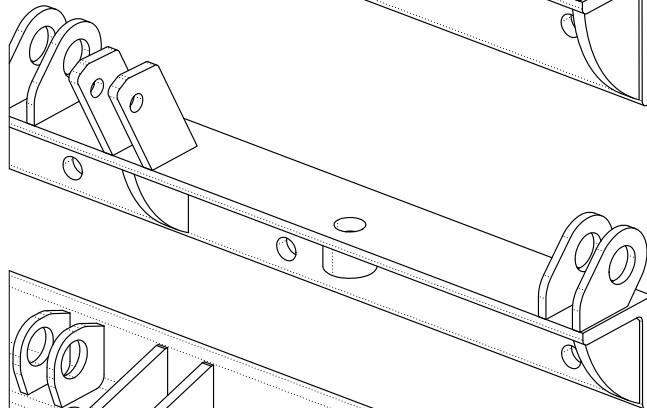
| ITEM | PART # | DESCRIPTION | ULTRA-72 QTY | ULTRA-84 QTY |
|------|----------------------------|---|-----------------|-----------------|
| | NO CROSSOVER RELIEF | | | |
| NS | P60159 | HOSE CLAMP | 1 | 1 |
| NS | P60160 | PLATE, HOSE CLAMP | 1 | 1 |
| NS | P50008 | HOSE, 3/8" x 78", 4800 PSI, 6FJIC-8FJIC | 1 | 1 |
| NS | P50008-D | HOSE, 3/8" x 94", 4800 PSI, 6FJIC-8FJIC | 1 | 1 |
| NS | P60090 | NUT, HEX, NYLOCK, 5/16"-18 | 1 | 1 |
| NS | P60215 | BOLT, HEX, 5/16" x 2" GRADE 5 | 1 | 1 |

Trip Edge Generations

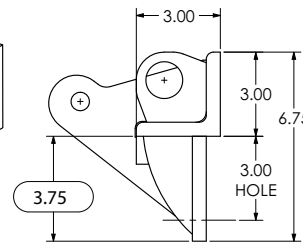
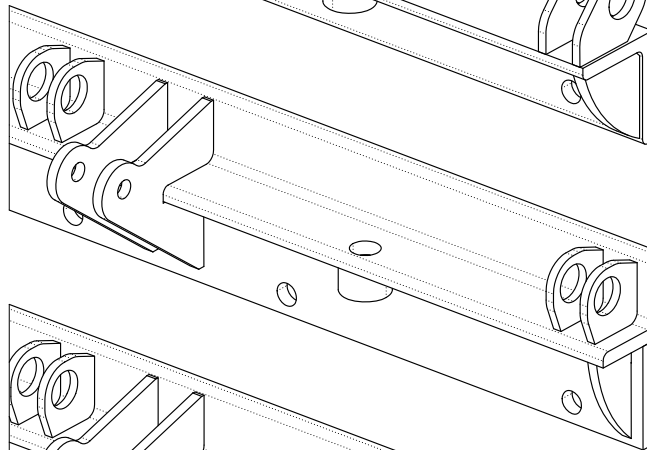
TRIP EDGE MODEL IDENTIFYING DIMENSION



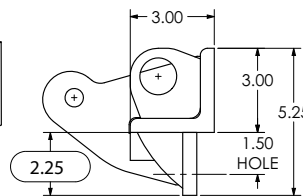
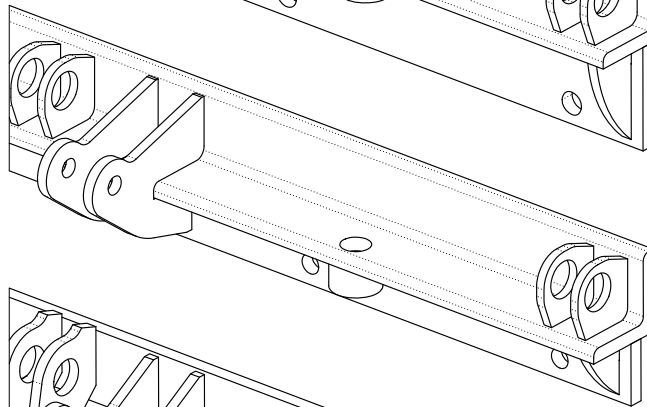
"3.39" EAR"
GENERATION 1



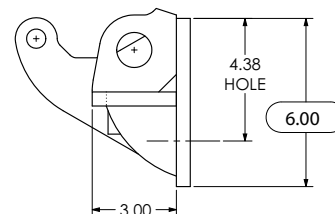
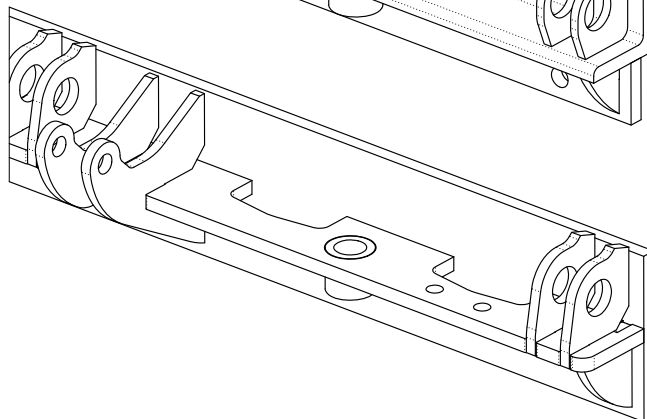
"2.86" EAR"
GENERATION 2



"CENTER PUNCH"
GENERATION 3



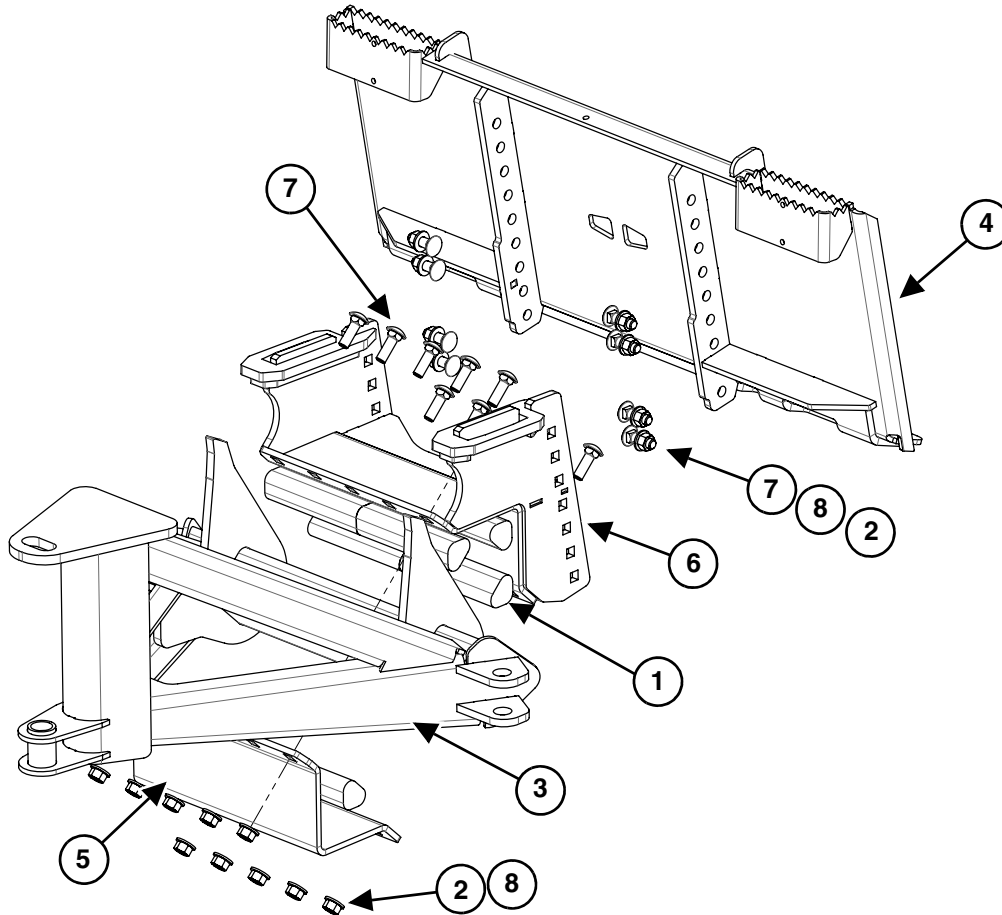
"TOP PUNCH"
GENERATION 4



"CURRENT"
GENERATION 5

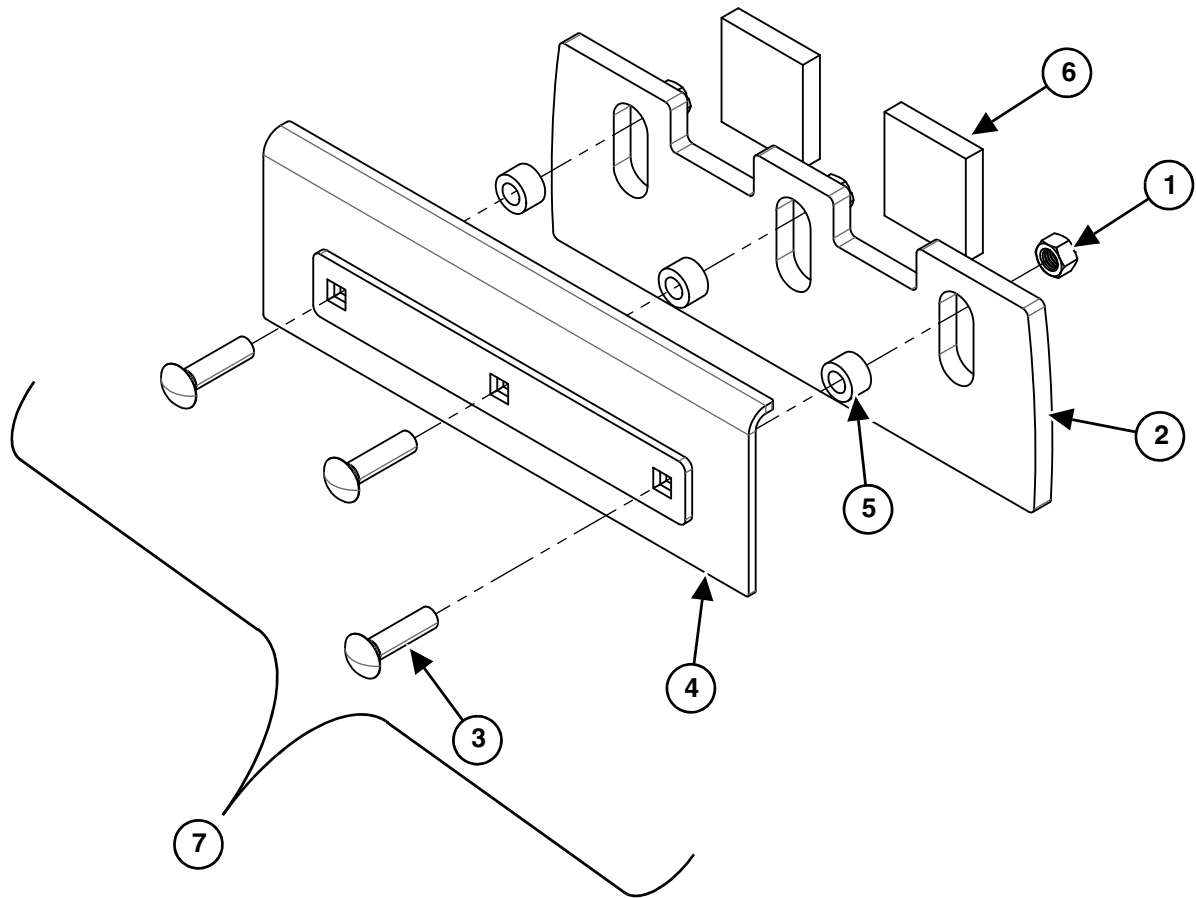
Options

Flex Frame



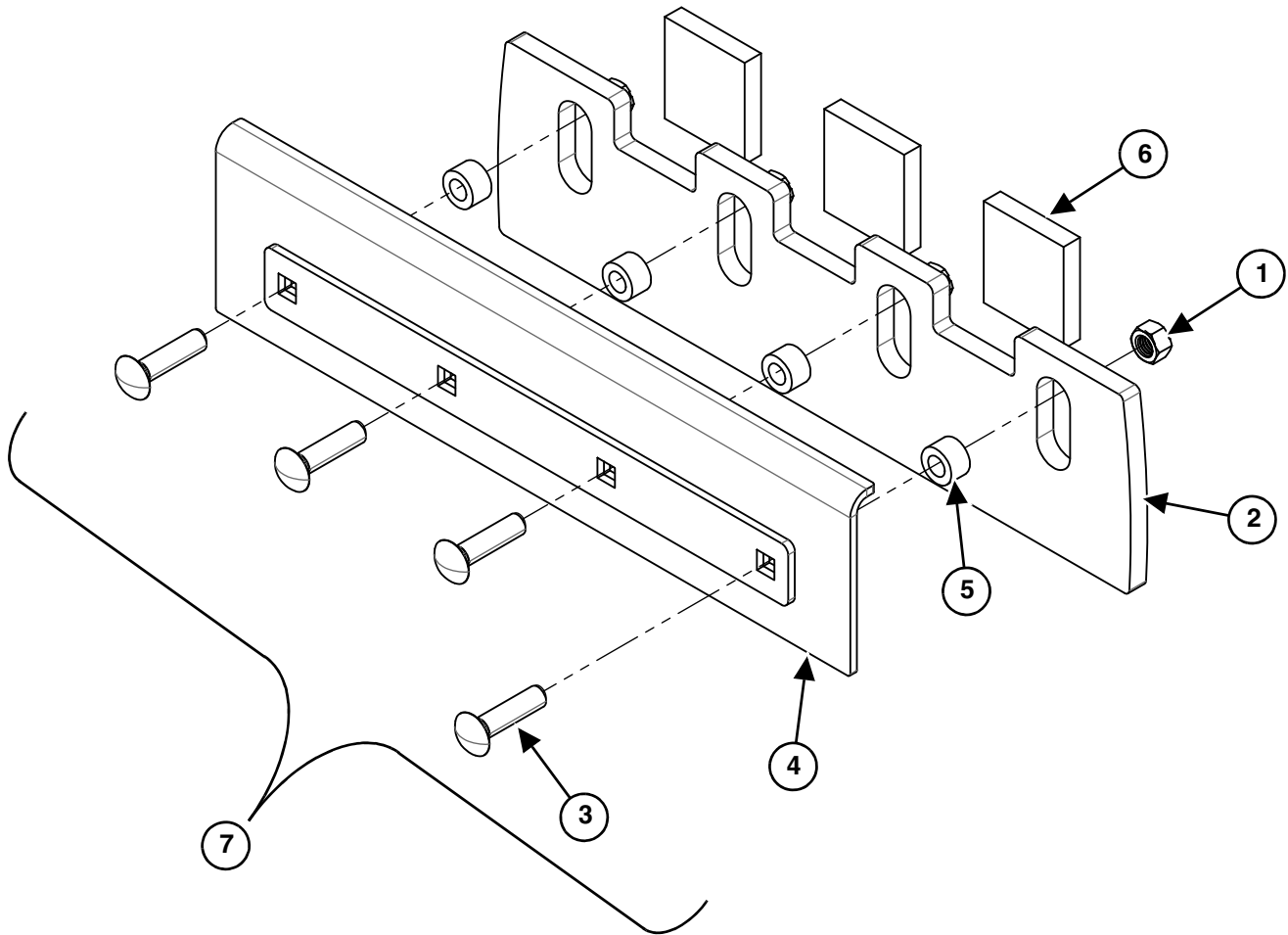
| ITEM | PART # | DESCRIPTION | QTY |
|------|--------|---|-----|
| | P50020 | FLEX FRAME | |
| 1 | P20042 | INSERT RUBBER, FOR T-FRAME, (16.00" LONG) | 4 |
| 2 | P40012 | NUT, LOCK 5/8-11, GRADE C | 18 |
| 3 | P50027 | FLEX FRAME, A-FRAME WELDMENT, BLACK | 1 |
| 4 | P50028 | FLEX FRAME MOUNT PLATE | 1 |
| 5 | P50029 | FRONT TORSION CLAM SHELL | 1 |
| 6 | P50030 | FLEX FRAME, REAR TORSION WELDMENT | 1 |
| 7 | P60010 | BOLT, CARRIAGE, 5/8-11 x 2" GRADE 5 | 18 |
| 8 | P60096 | WASHER, FLAT, 5/8" GRADE 8 | 18 |

ActivEdge, AR400, 18" Sectional Blade



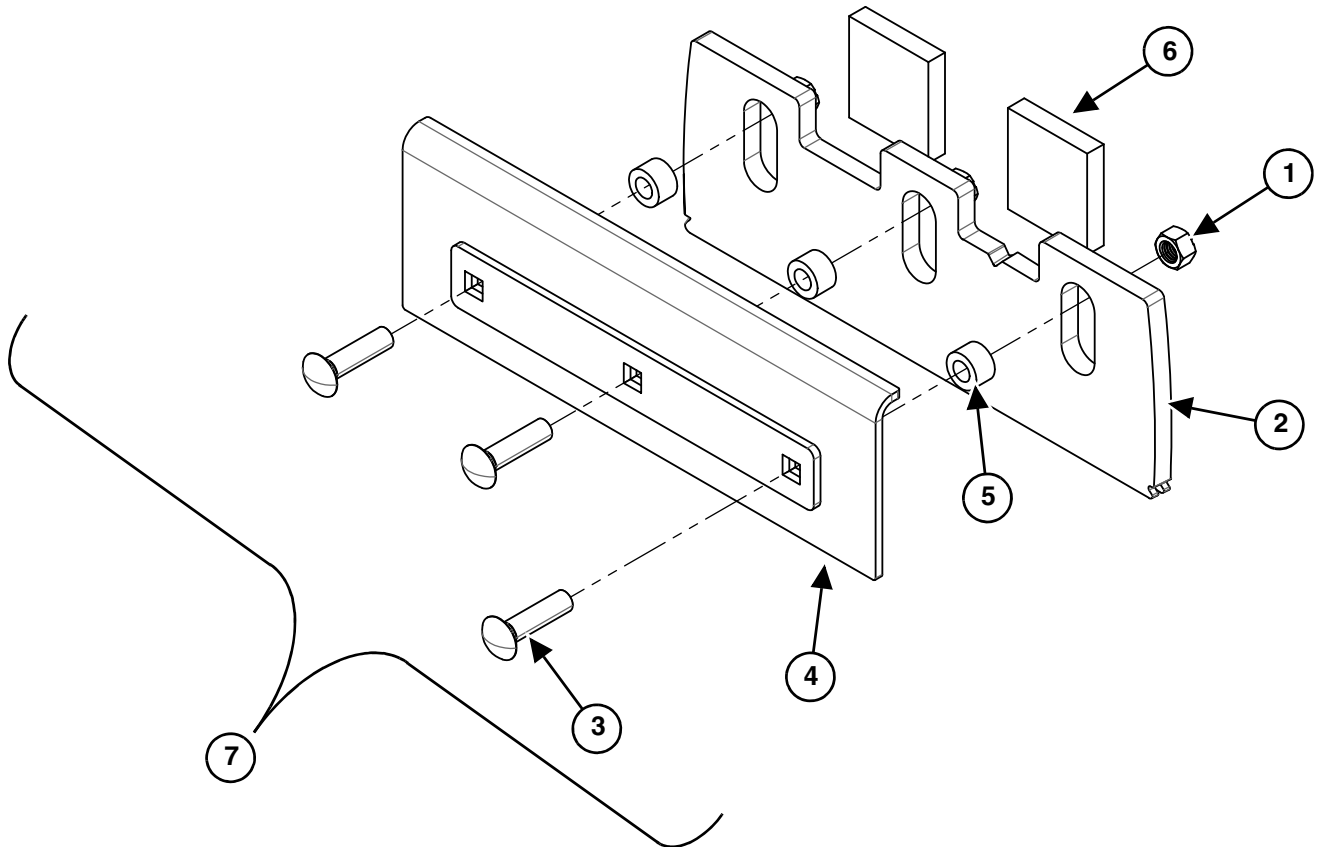
| ITEM | PART # | DESCRIPTION | QTY |
|------|---------------|--|-----|
| 1 | P40012 | NUT, LOCK, 5/8-11 | 3 |
| 2 | P50011-18-SEC | BLADE, 18" | 1 |
| 3 | P81011 | BOLT, CARRIAGE, 5/8-11 x 2-1/2", GR 8 | 3 |
| 4 | P60255 | RETAINING WELDMENT, 18" | 1 |
| 5 | P60253 | BUSHING, STANDOFF | 3 |
| 6 | P60254 | SPRING, RUBBER | 2 |
| 7 | P60251-K | KIT, 18" SECTION (kit includes items 1, 2, 3, 4, 5, & 6) | 1 |

ActivEdge, AR400, 24" Sectional Blade



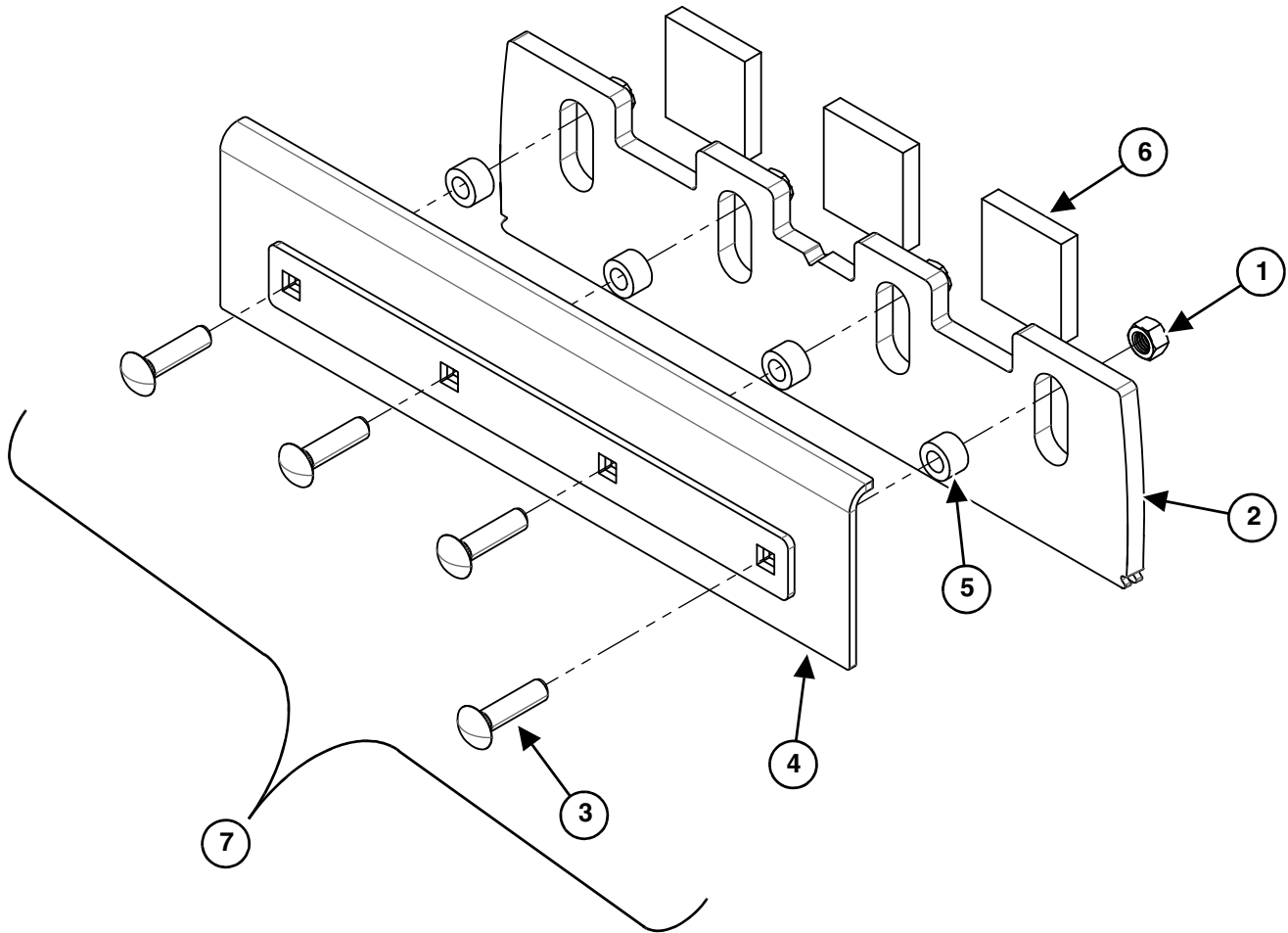
| ITEM | PART # | DESCRIPTION | QTY |
|------|---------------|--|-----|
| 1 | P40012 | NUT, LOCK, 5/8-11 | 4 |
| 2 | P50011-24-SEC | BLADE, 24" | 1 |
| 3 | P81011 | BOLT, CARRIAGE, 5/8-11 x 2-1/2", GR 8 | 4 |
| 4 | P60252 | RETAINING WELDMENT, 24" | 1 |
| 5 | P60253 | BUSHING, STANDOFF | 4 |
| 6 | P60254 | SPRING, RUBBER | 3 |
| 7 | P60250-K | KIT, 24" SECTION (kit includes items 1, 2, 3, 4, 5, & 6) | 1 |

ActivEdge, Carbide, AR400, 18" Sectional Blade



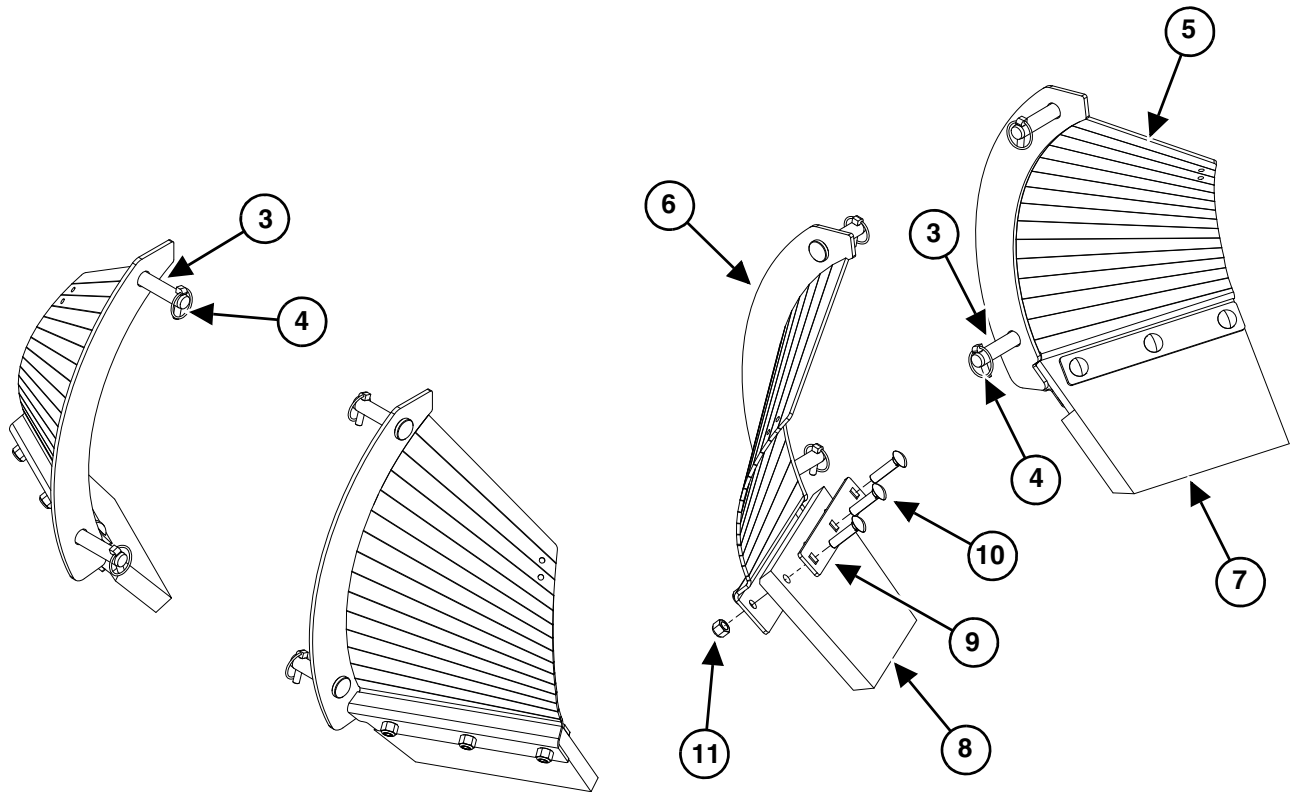
| ITEM | PART # | DESCRIPTION | QTY |
|------|---------------|--|-----|
| 1 | P40012 | NUT, LOCK, 5/8-11 | 3 |
| 2 | P80109-CARB | BLADE, 24" | 1 |
| 3 | P81011 | BOLT, CARRIAGE, 5/8-11 x 2-1/2", GR 8 | 3 |
| 4 | P60255 | RETAINING WELDMENT, 18" | 1 |
| 5 | P80107 | BUSHING, STANDOFF | 3 |
| 6 | P60254 | SPRING, FOAM | 2 |
| 7 | P80112-CARB-K | KIT, 18" SECTION (kit includes items 1, 2, 3, 4, 5, & 6) | 1 |

ActivEdge, Carbide, AR400, 24" Sectional Blade



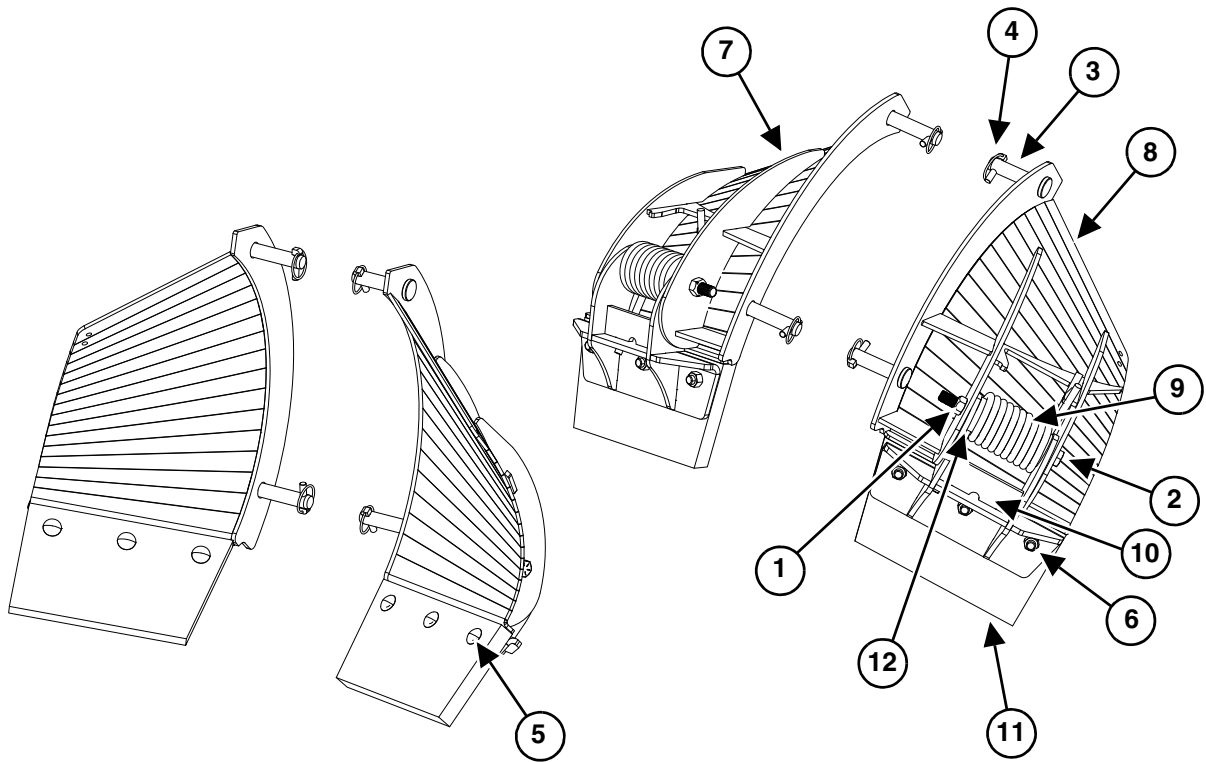
| ITEM | PART # | DESCRIPTION | QTY |
|------|---------------|--|-----|
| 1 | P40012 | NUT, LOCK, 5/8-11 | 4 |
| 2 | P80106-CARB | BLADE, 24" | 1 |
| 3 | P81011 | BOLT, CARRIAGE, 5/8-11 x 2-1/2", GR 8 | 4 |
| 4 | P60252 | RETAINING WELDMENT, 24" | 1 |
| 5 | P80107 | BUSHING, STANDOFF | 4 |
| 6 | P60254 | SPRING, FOAM | 3 |
| 7 | P80110-CARB-K | KIT, 24" SECTION (kit includes items 1, 2, 3, 4, 5, & 6) | 1 |

WolfWing Side Wing Kit (60003)



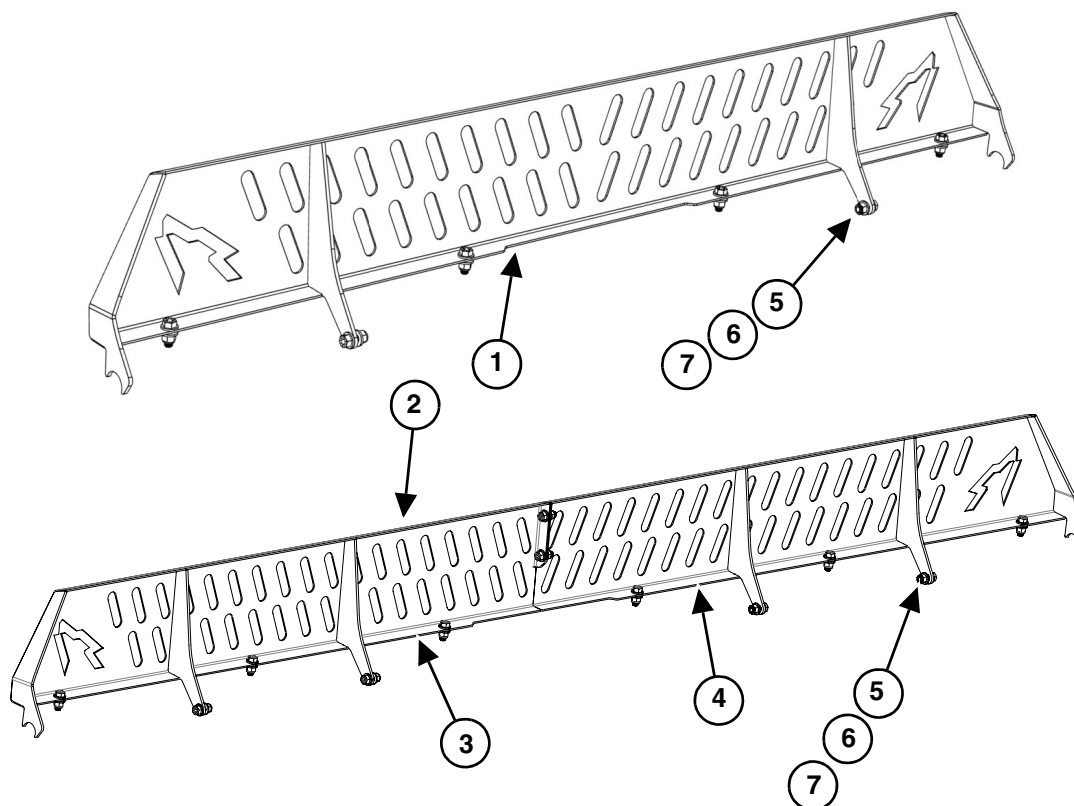
| ITEM | PART # | DESCRIPTION | QTY |
|------|----------|--|-----|
| NS | DC34 | DECAL, WOLFWINGS | 1 |
| NS | DC36 | DECAL, WOLFHEAD, LEFT SIDE PLATE | 1 |
| 3 | P50016 | PIN, SIDEPLATE ATTACHING, 1" x 4-1/4" | 4 |
| 4 | P50021 | PIN, LYNCH, SIDEPLATE | 4 |
| 5 | P60003L | WOLF WING LEFT | 1 |
| 6 | P60003R | WOLF WING RIGHT | 1 |
| 7, 8 | P60004 | CUTTING EDGE KIT, L and R, w/ HW | 1 |
| 7 | P60004-L | CUTTING EDGE, URETHANE, LEFT SIDE WING | 1 |
| 8 | P60004-R | CUTTING EDGE, URETHANE, RIGHT SIDE WING | 1 |
| 9 | P60007 | HOLD DOWN STRIP, FOR WOLFWING CUTTING EDGE | 2 |
| 10 | P60008 | BOLT, CARRIAGE, 5/8-11 x 2-1/2" | 6 |
| 11 | P60035 | NUT, HEX, NYLOCK, 5/8-11 GRADE 8 | 6 |

Trip Edge WolfWing Side Wing Kit (60003-TE)



| ITEM | PART # | DESCRIPTION | QTY |
|------|---------|---|-----|
| 1 | P20028 | NUT, LOCK, 3/4-10, GRADE C | 2 |
| 2 | P25064 | BOLT, HEX, 3/4-10 X 9, GRADE 8 | 2 |
| 3 | P50016 | PIN, SIDEPLATE ATTACHING, 1" x 4-1/4" | 4 |
| 4 | P50021 | PIN, LYNCH, SIDEPLATE | 4 |
| 5 | P60008 | BOLT, CARRIAGE, 5/8-11 x 2-1/2" | 6 |
| 6 | P60009 | NUT, HEX, 5/8-11 | 6 |
| 7 | P60012L | WELDMENT, WING, TE WOLFWING LEFT SIDE | 1 |
| 8 | P60012R | WELDMENT, TRIP EDGE, WOLFWING RIGHT SIDE | 1 |
| 9 | P60041 | SPRING, COIL, FOR TRIP EDGE WOLFWING | 2 |
| 10 | P60042 | WELDMENT, TRIP EDGE, FOR TRIP EDGE WOLFWING | 2 |
| 11 | P60044 | WOLF WING TRIP BLADE | 2 |
| 12 | P60046 | SPRING SPACER TUBE | 2 |

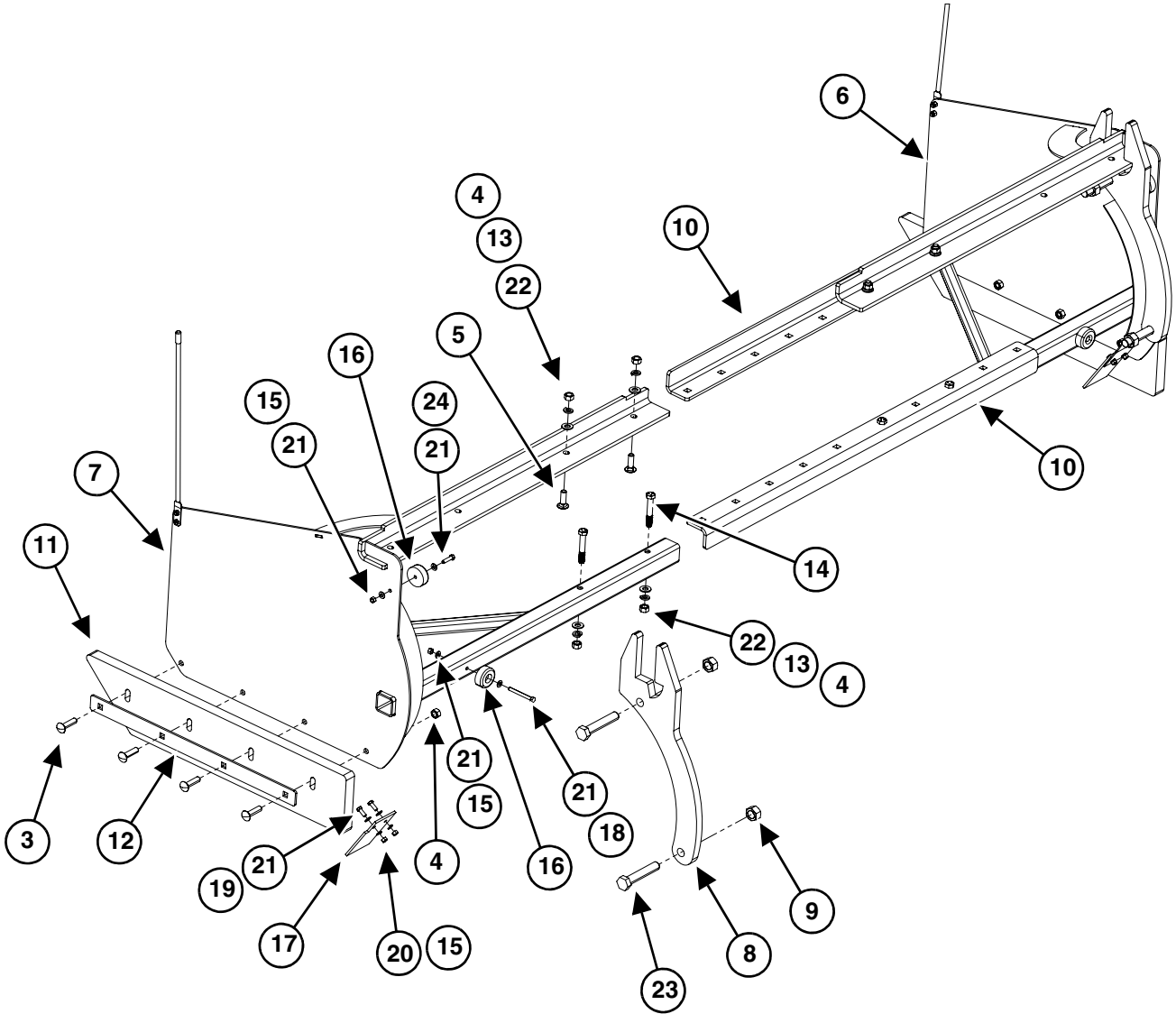
Spill Guard



| ITEM | PART # | DESCRIPTION | QTY |
|------|----------|---|-----|
| 1 | P60276-K | 7' SPILL GUARD KIT, w/ HW for Ultra-84 | 1 |
| | P60270-K | 8' SPILL GUARD KIT, w/ HW for Ultra-96 | 1 |
| | P60271-K | 9' SPILL GUARD KIT, w/ HW for Ultra-108, UltraXT-108 | 1 |
| 2 | P60272-K | 10' SPILL GUARD KIT, w/ HW for Ultra-120, UltraXT-120 | 1 |
| 3 | P60272-L | 10' SPILL GUARD, LEFT ONLY | 1 |
| 4 | P60272-R | 10' SPILL GUARD, RIGHT ONLY | 1 |
| 2 | P60273-K | 11' SPILL GUARD KIT, w/ HW for Ultra-132, UltraXT-132 | 1 |
| 3 | P60273-L | 11' SPILL GUARD, LEFT ONLY | 1 |
| 4 | P60273-R | 11' SPILL GUARD, RIGHT ONLY | 1 |

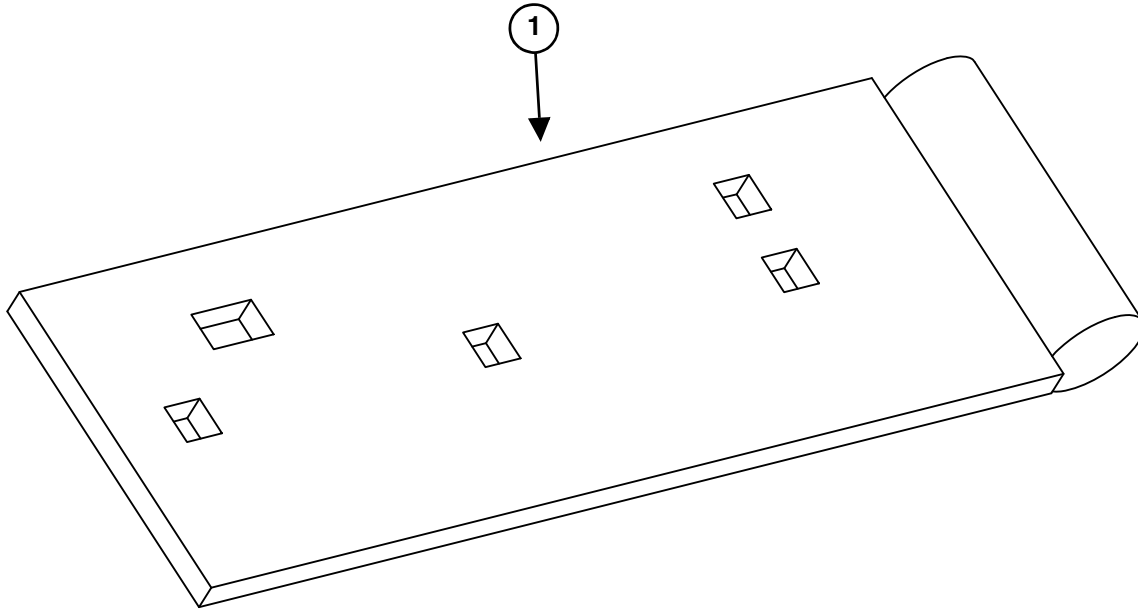
| ITEM | PART # | DESCRIPTION | ULTRA-84 QTY | ULTRA-96 QTY | ULTRA-108 ULTRA-XT 108 QTY | ULTRA-120 ULTRA-XT 120 QTY | ULTRA-132 ULTRA-XT 132 QTY |
|------|--------|--------------------------------|-----------------|-----------------|-------------------------------------|-------------------------------------|-------------------------------------|
| 5 | P60274 | BOLT, HEX, 1/2 X 1", ZINC, GR8 | 6 | 6 | 8 | 12 | 12 |
| 6 | P60222 | WASHER, FLAT, 1/2" SAE, ZINC | 12 | 12 | 16 | 24 | 24 |
| 7 | P25045 | NUT, LOCK, 1/2" ZINC, GR C | 6 | 6 | 8 | 12 | 12 |

UltraPlow FastTach - 50025



| ITEM | PART # | DESCRIPTION | QTY |
|------|----------|--|-----|
| NS | DC11 | DECAL, FASTTACH, RIGHT SIDE PLATE | 1 |
| NS | DC29 | DECAL, WOLFHEAD, MOLDBOARD RIGHT | 1 |
| 3 | P80035 | BOLT, CARRIAGE, 5/8-11 x 3" | 8 |
| 4 | P60009 | NUT, HEX, 5/8-11 | 16 |
| 5 | P60010 | BOLT, CARRIAGE, 5/8-11 x 2" ZINC, GRADE 5 | 4 |
| 6 | P60020 | WELDMENT, FASTTACH RIGHT SIDE ULTRAPLOW | 1 |
| 7 | P60021 | WELDMENT, FASTTACH LEFT SIDE ULTRAPLOW | 1 |
| 8 | P60022 | ATTACHING BRACKET, FASTTACH, LEFT OR RIGHT, ULTRAPLOW (EAR) | 2 |
| 9 | P60024 | NUT, LOCK, 1-8, GRADE C | 4 |
| 10 | P60025 | CONNECTING SPAN BAR, UPPER OR LOWER, ULTRAPLOW | 2 |
| 11 | P60026 | CUTTING EDGE (URETHANE), LEFT OR RIGHT | 2 |
| NS | P60026-K | CUTTING EDGE KIT (URETHANE), w/ HW | 1 |
| 12 | P60027 | CUTTING EDGE HOLD DOWN STRIP, FASTTACH, LEFT OR RIGHT | 2 |
| 13 | P60029 | 5/8" LOCK WASHER | 8 |
| 14 | P60031 | BOLT, HEX, 5/8-11 x 4, GRADE 8 | 4 |
| 15 | P60037 | NUT, HEX 3/8-16, GRADE 5 | 8 |
| 16 | P60039 | BUMPER | 4 |
| 17 | P60032 | SNOW CATCH, POLY, FOR FASTTACH | 2 |
| 18 | P60045 | BOLT,HEX, 3/8-16 x 4", GRADE 5 | 2 |
| 19 | P60059 | BOLT, HEX, 3/8-16 x 1, ZINC, GRADE 5 | 4 |
| 20 | P60060 | WASHER, LOCK, 3/8", FOR WING BUMP STOP BOLT | 4 |
| 21 | P60088 | WASHER, FLAT, 3/8" | 12 |
| 22 | P60096 | WASHER, FLAT, 5/8" GRADE 8 | 8 |
| 23 | P60229 | BOLT, HEX, 1"-8 x 5-1/2",GRADE 5 | 4 |
| 24 | P80041 | BOLT, HEX, 3/8" x 11-1/2" | 2 |
| 25 | P60040-K | SNOW CATCH KIT, includes item 17, and (4) 3/8-16 x 1-1/2 Zinc Hex Bolt GR5, (8) 3/8 SAE Washers, (4) 3/8" Nylock Nut | 1 |

Curb Guard



| ITEM | PART # | DESCRIPTION | QTY |
|------|----------|---|-----|
| 1 | P50013-1 | PLATE, CURB GUARD (R or L Kit for Top and Center Punch) | 1 |
| NS | P50013 | CURB GUARD KIT, (L and R), w/ HW | 1 |



| | |
|-----------------------------|----|
| Specifications | 65 |
| Dimensions | 68 |
| Torque Specifications | 69 |



Specifications

| DESCRIPTION | ULTRA-72 | ULTRA-84 | ULTRA-96 |
|-----------------------------|---------------------|---------------------|---------------------|
| Blade Width | 6' (72") | 7' (84") | 8' (96") |
| Blade Width at Full Angle | 59" | 68.8" | 78.6" |
| Blade Height | 30.7" | 30.7" | 30.7" |
| Weight | 732 lbs. | 774 lbs. | 816 lbs. |
| Moldboard Gauge | 10 ga. | 10 ga. | 10 ga. |
| Trip Springs | 4 | 4 | 4 |
| Wear Shoes | Opt. | Opt. | Opt. |
| Cutting Edge | Top Punch 5/8" x 6" | Top Punch 5/8" x 6" | Top Punch 5/8" x 6" |
| Angle Rams | 2" x 13" | 2" x 13" | 2" x 13" |
| Vertical Ribs | 6 | 6 | 6 |
| Moldboard Radius | 14" | 14" | 14" |
| Full Down Pressure | Yes | Yes | Yes |
| Spring Assist Down Pressure | Opt. | Opt. | Opt. |
| Trip Edge | Yes | Yes | Yes |
| Universal Skid Steer Mount | Std. | Std. | Std. |
| Cross Over Relief Valve | Opt. | Opt. | Std. |
| SoftTouch™ Cutting Edge | Opt. | Opt. | Opt. |
| Carbide ActivEdge, AR400 | Opt. | Opt. | Opt. |
| ActivEdge, AR400 | Opt. | Opt. | Opt. |
| High Carbon Curb Guards | Opt. | Opt. | Opt. |
| Flex Frame | Opt. | Opt. | Opt. |
| 3PT Frame | Opt. | Opt. | Opt. |
| A Frame (black) | Opt. | Opt. | Opt. |
| Wolf Wing | Opt. | Opt. | Opt. |
| Trip Edge Wolf Wing | Opt. | Opt. | Opt. |
| FastTach | Opt. | Opt. | Opt. |
| Spill Guard | N/A | Opt. | Opt. |

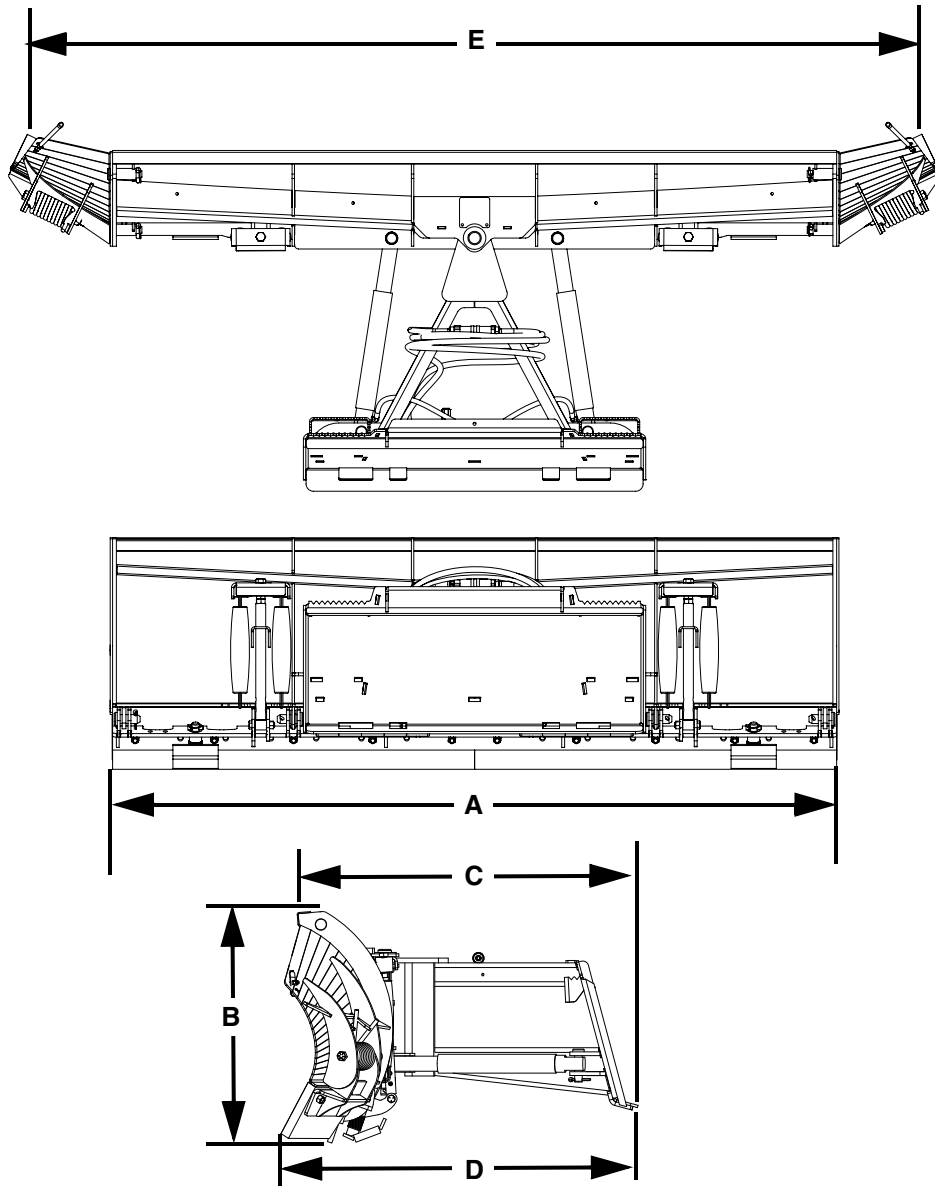
Attachment Specifications

| DESCRIPTION | ULTRA-108 | ULTRA-120 |
|----------------------------|-----------|------------|
| Blade Width | 9' (108") | 10' (120") |
| Blade Width at Full Angle | 88.5" | 98.3" |
| Blade Height | 30.7" | 30.7" |
| Weight | 858 lbs. | 920 lbs. |
| Moldboard Gauge | 10 ga. | 10 ga. |
| Trip Springs | 4 | 4 |
| Wear Shoes | Opt. | Opt. |
| Angle Rams | 2" x 13" | 2" x 13" |
| Vertical Ribs | 6 | 8 |
| Moldboard Radius | 14" | 14" |
| Full Down Pressure | Yes | Yes |
| Trip Edge | Yes | Yes |
| Universal Skid Steer Mount | Std. | Std. |
| Cross Over Relief Valve | Std. | Std. |
| SoftTouch™ Cutting Edge | Opt. | Opt. |
| Carbide ActivEdge, AR400 | Opt. | Opt. |
| ActivEdge, AR400 | Opt. | Opt. |
| Cylinder Kit | Std. | Std. |
| High Carbon Curb Guards | Opt. | Opt. |
| Flex Frame | Opt. | Opt. |
| 3PT Frame | Opt. | Opt. |
| A Frame (black) | Opt. | Opt. |
| Wolf Wing | Opt. | Opt. |
| Trip Edge Wolf Wing | Opt. | Opt. |
| FastTach | Opt. | Opt. |
| Spill Guard | Opt. | Opt. |

Attachment Specifications (Cont'd)

| DESCRIPTION | ULTRAXT-108 | ULTRAXT-120 | ULTRAXT-132 |
|----------------------------|-------------|-------------|-------------|
| Blade Width | 9' (108") | 10' (120") | 11' (132") |
| Blade Width at Full Angle | 88.5" | 98.3" | 114.6" |
| Blade Height | 30.7" | 30.7" | 30.7" |
| Weight | 918 lbs. | 986 lbs. | 1,028 lbs. |
| Moldboard Gauge | 10 ga. | 10 ga. | 10 ga. |
| Trip Springs | 4 | 4 | 4 |
| Wear Shoes | Opt. | Opt. | Opt. |
| Angle Rams | 2" x 13" | 2" x 13" | 2" x 13" |
| Vertical Ribs | 6 | 8 | 8 |
| Moldboard Radius | 14" | 14" | 14" |
| Full Down Pressure | Yes | Yes | Yes |
| Trip Edge | Yes | Yes | Yes |
| Universal Skid Steer Mount | Std. | Std. | Std. |
| Cross Over Relief Valve | Std. | Std. | Std. |
| SoftTouch™ Cutting Edge | Opt. | Opt. | Opt. |
| Carbide ActivEdge, AR400 | Opt. | Opt. | Opt. |
| ActivEdge, AR400 | Opt. | Opt. | Opt. |
| High Carbon Curb Guards | Opt. | Opt. | Opt. |
| Flex Frame | Opt. | Opt. | Opt. |
| 3PT Frame | Opt. | Opt. | Opt. |
| A Frame (black) | Std. | Std. | Std. |
| Wolf Wing | Opt. | Opt. | Opt. |
| Trip Edge Wolf Wing | Opt. | Opt. | Opt. |
| FastTach | Opt. | Opt. | N/A |
| Spill Guard | Std. | Std. | Std. |

Dimensions



| DESCRIPTION | ULTRA-72 | ULTRA-84 | ULTRA-96 | ULTRA-108 | ULTRA-120 | ULTRA-132 |
|---------------------------------------|----------|-----------|-----------|-----------|-----------|-----------|
| Overall Width Without Wings (A) | 72.0 in. | 84.0 in. | 96.0 in. | 108.0 in. | 120.0 in. | 132.0 in. |
| Overall Height (B) | 30.6 in. | 30.6 in. | 30.6 in. | 30.6 in. | 30.6 in. | 30.6 in. |
| Overall Length Without Wings (C) | 45.2 in. | 45.2 in. | 45.2 in. | 45.2 in. | 45.2 in. | 45.2 in. |
| Overall Length With Wings (D) | 47.3 in. | 47.3 in. | 47.3 in. | 47.3 in. | 47.3 in. | 47.3 in. |
| Overall Cutting Width, With Wings (E) | 94.6 in. | 106.6 in. | 118.6 in. | 130.6 in. | 142.6 in. | 154.6 in. |

Torque Specifications

Standard Hardware And Lock Nuts

| BOLT TYPE | SAE GRADE 5 | | SAE GRADE 8 | | LOCK NUTS | | | |
|-----------|--------------------------|--------------------------|--------------------------|---------------------------|---------------------------|----------------------------|--------------------------|--------------------------|
| | Plated or Unplated | Plated W / ZnCr | Plated or Unplated | Plated W / ZnCr | Plated or Unplated | Plated W / ZnCr | W / Grade 5 Bolt | W / Grade 8 Bolt |
| | Silver | Gold | Silver | Gold | Silver | Gold | | |
| 1/4 | 55 in / lb (6.2 N•m) | 72 in / lb (8.1 N•m) | 86 in / lb (9.7 N•m) | 112 in / lb (12.6 N•m) | 121 in / lb (13.6 N•m) | 157 in / lb (17.7 N•m) | 61 in / lb (6.9 N•m) | 86 in / lb (9.8 N•m) |
| 5/16 | 115 in / lb (13 N•m) | 149 in / lb (17 N•m) | 178 in / lb (20 N•m) | 229 in / lb (26 N•m) | 250 in / lb (28 N•m) | 325 in / lb (37 N•m) | 125 in / lb (14 N•m) | 176 in / lb (20 N•m) |
| 3/8 | 17 ft / lb (23 N•m) | 22 ft / lb (30 N•m) | 26 ft / lb (35 N•m) | 34 ft / lb (46 N•m) | 37 ft / lb (50 N•m) | 48 ft / lb (65 N•m) | 19 ft / lb (26 N•m) | 26 ft / lb (35 N•m) |
| 7/16 | 27 ft / lb (37 N•m) | 35 ft / lb (47 N•m) | 42 ft / lb (57 N•m) | 54 ft / lb (73 N•m) | 59 ft / lb (80 N•m) | 77 ft / lb (104 N•m) | 30 ft / lb (41 N•m) | 42 ft / lb (57 N•m) |
| 1/2 | 42 ft / lb (57 N•m) | 54 ft / lb (73 N•m) | 64 ft / lb (87 N•m) | 83 ft / lb (113 N•m) | 91 ft / lb (123 N•m) | 117 ft / lb (159 N•m) | 45 ft / lb (61 N•m) | 64 ft / lb (88 N•m) |
| 9/16 | 60 ft / lb (81 N•m) | 77 ft / lb (104 N•m) | 92 ft / lb (125 N•m) | 120 ft / lb (163 N•m) | 130 ft / lb (176 N•m) | 169 ft / lb (229 N•m) | 65 ft / lb (88 N•m) | 92 ft / lb (125 N•m) |
| 5/8 | 83 ft / lb (112 N•m) | 107 ft / lb (145 N•m) | 128 ft / lb (174 N•m) | 165 ft / lb (224 N•m) | 180 ft / lb (244 N•m) | 233 ft / lb (316 N•m) | 90 ft / lb (122 N•m) | 127 ft / lb (172 N•m) |
| 3/4 | 146 ft / lb (198 N•m) | 189 ft / lb (256 N•m) | 226 ft / lb (306 N•m) | 293 ft / lb (397 N•m) | 319 ft / lb (432 N•m) | 413 ft / lb (560 N•m) | 160 ft / lb (217 N•m) | 226 ft / lb (306 N•m) |
| 7/8 | 142 ft / lb (193 N•m) | 183 ft / lb (248 N•m) | 365 ft / lb (495 N•m) | 473 ft / lb (641 N•m) | 515 ft / lb (698 N•m) | 667 ft / lb (904 N•m) | 258 ft / lb (350 N•m) | 364 ft / lb (494 N•m) |
| 1 | 213 ft / lb (289 N•m) | 275 ft / lb (373 N•m) | 547 ft / lb (742 N•m) | 708 ft / lb (960 N•m) | 773 ft / lb (1048 N•m) | 1000 ft / lb (1356 N•m) | 386 ft / lb (523 N•m) | 545 ft / lb (739 N•m) |





15100 Business Parkway, Rosemount, MN 55068
1-800-905-2265 / snowwolfplows.com