



# Operation & Maintenance Manual



## UltraPusher

Models TE & TE/XT



HD Models 10,000 - 15,000 lb.



**REMEMBER:** Register your product! No claims for warranty shall be considered unless your product registration card is completed online within 30 days of purchase. Go to: [snowwolfplows.com/registration](https://snowwolfplows.com/registration).

# MANUFACTURER'S WARRANTY

## Two-Year Limited Warranty

SNOWWOLF International, hereinafter referred to as SNOWWOLF, warrants new SNOWWOLF SNOW PLOWS at the time of delivery to the original purchaser, to be free from defects in material and workmanship when properly set up and operated in accordance with the recommendations set forth by SNOWWOLF.

SNOWWOLF'S liability for any defect with respect to accepted goods shall be limited to repairing the goods at a SNOWWOLF designated location or at an authorized dealer location, or replacing them as SNOWWOLF shall elect. The above shall be in accordance with SNOWWOLF warranty adjustment policies. SNOWWOLF'S obligation shall terminate twenty-four (24) months after the delivery of the goods to original purchaser including cutting edge breakage or wear. This warranty shall not apply to any machine or attachment which shall have been repaired or altered outside the SNOWWOLF factory or authorized SNOWWOLF dealership or in any way so as in SNOWWOLF'S judgment, to affect its stability or reliability, nor which has been subject to misuse, negligence or accident beyond the Company recommended machine rated capacity.

## Warranty Claim

To submit a warranty claim, a return authorization from SNOWWOLF must be obtained. The failed part may then be returned. Tampering with the failed part may void the warranty. This warranty does not include freight or delivery charges incurred when returning machinery for servicing. Dealer mileage, service calls, and pickup/delivery charges are the customers' responsibility.

## Exclusions of Warranty

Except as otherwise expressly stated herein, SNOWWOLF makes no representation or warranty of any kind, expressed or implied, AND MAKES NO WARRANTY OF MERCHANTABILITY IN RESPECT TO ITS MACHINERY AND/OR ATTACHMENTS ARE FIT FOR ANY PARTICULAR PURPOSE. SNOWWOLF shall not be liable for incidental or consequential damages for any breach of warranty, including but not limited to inconvenience, rental of replacement equipment, loss of profits or other commercial loss. Upon purchase, the buyer assumes all liability for all personal injury and property resulting from the handling, possession, or use of the goods by the buyer.

No agent, employee, or representative of SNOWWOLF has any authority to bind SNOWWOLF to any affirmation, representation or warranty concerning its machinery and/or attachments except as specifically set forth herein.

This warranty policy supersedes any previous documents.

**No claims for warranty shall be considered unless warranty registration is sent to SNOWWOLF within 30 days of purchase!**

Manufactured By:



15100 Business Parkway  
Rosemount, MN 55068  
[www.snowwolfplows.com](http://www.snowwolfplows.com)

<b>Introduction</b> .....	3
Owner Information . . . . .	5
Serial Number Location . . . . .	5
Attachment Identification . . . . .	6
<b>Safety</b> .....	7
Safety Information . . . . .	9
Safe Operation Needs A Qualified Operator . . . . .	9
Importance of Safety . . . . .	10
<b>Operation</b> .....	13
General Information . . . . .	15
Pre-Operation Inspection . . . . .	15
Attachment Inspection . . . . .	16
Daily Inspection . . . . .	16
Monthly Inspection . . . . .	16
Attachment Installation . . . . .	17
Entering The Operator’s Position . . . . .	17
Leaving The Operator’s Position . . . . .	17
Connecting Attachment To The Machine . . . . .	17
Operating The Attachment . . . . .	19
Operation . . . . .	19
Attachment Removal . . . . .	20
<b>Maintenance</b> .....	21
Maintenance Safety . . . . .	23
General Maintenance . . . . .	24
UltraPusher Maintenance . . . . .	25
Cutting Edge Replacement . . . . .	25
Cutting Edge Trip Spring Adjustment . . . . .	26
Side Plate Wear Shoe Adjustment (if equipped) . . . . .	26
Side Plate Wear Shoe Replacement (if equipped) . . . . .	27
Troubleshooting . . . . .	28
Storage And Return To Service . . . . .	29
<b>Parts</b> .....	31
Models UPTE 84, UPTE 96, UPTE 108, UPTE 120 . . . . .	34
Parts . . . . .	34
Options . . . . .	36
Models UPTE/XT108, UPTE/XT120, UPTE/XT132 . . . . .	38

---

Parts .....	38
Options .....	40
Trip Edge Generations .....	42
Options .....	43
ActivEdge, AR400, 18" Sectional Blade .....	43
ActivEdge, AR400, 24" Sectional Blade .....	44
ActivEdge, Carbide, 18" Sectional Blade .....	45
ActivEdge, Carbide, 24" Sectional Blade .....	46
Spill Guard .....	47
<b>Specifications</b> .....	<b>49</b>
Specifications UPTE .....	51
Specifications UPTE/XT .....	52
Torque Specifications .....	53



---

Owner Information .....	5
Serial Number Location .....	5
Attachment Identification .....	6





# Owner Information

Thank you for your decision to purchase a SnowWolf UltraPusher. To ensure maximum performance of your equipment, it is mandatory that you thoroughly study the Operator’s Manual and follow the recommendations. Proper operation and maintenance are essential to maximize equipment life and prevent personal injury.

Operate and maintain this equipment in a safe manner and in accordance with all applicable local, state, and federal codes, regulations and / or laws. Follow all on-product labeling and instructions.

Make sure that all personnel have read this Operator’s Manual and thoroughly understand safe and correct operating, installation and maintenance procedures.

SnowWolf is continually working to improve its products. SnowWolf reserves the right to make any improvements or changes as deemed practical and possible without incurring any responsibility or obligation to make any changes or additions to equipment sold previously.

Although great care has been taken to ensure the accuracy of this publication, SnowWolf makes no warranty or guarantee of any kind, written or expressed, implied or otherwise with regard to the information contained within this manual. SnowWolf assumes no responsibility for any errors that may appear in this manual and shall not be liable under any circumstances for incidental, consequential or punitive damages in connection with, or arising from the use of this manual.

Keep this manual available for frequent reference. All new operators or owners must review the manual before using the equipment and annually thereafter. Contact your SnowWolf Attachments Dealer for assistance, information, or additional copies of the manual. Contact [www.snowwolfplows.com](http://www.snowwolfplows.com) or call 1-800-905-2265 for a complete list of dealers in your area.

# Serial Number Location

Please record attachment information in the space provided for future reference.

**Model Number:** \_\_\_\_\_

**Serial Number:** \_\_\_\_\_

**Dealer Name:** \_\_\_\_\_

**Dealer Number:** \_\_\_\_\_

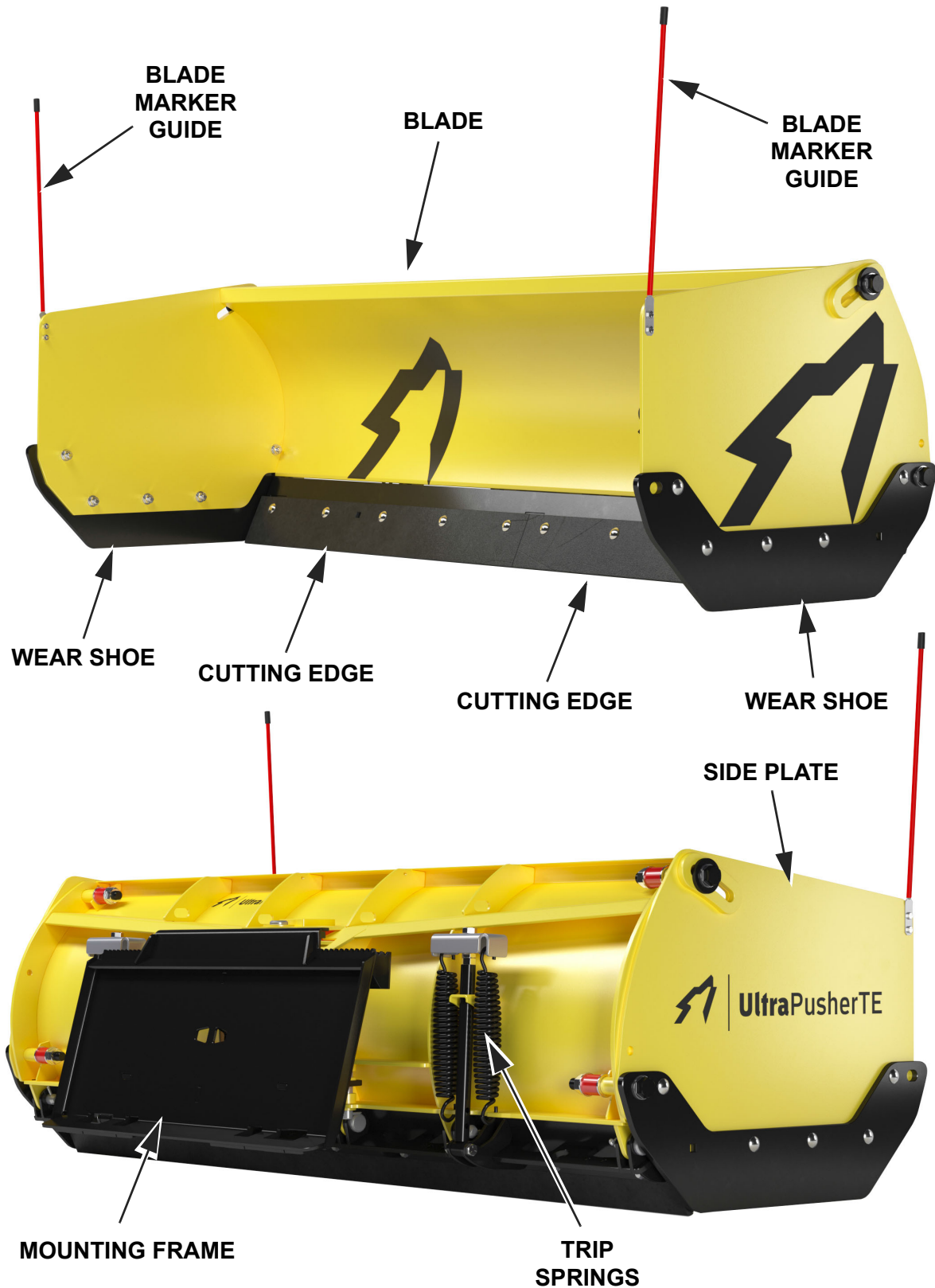
**Date of Purchase:** \_\_\_\_\_

Always use the serial number of the UltraPusher when requesting service information or when ordering parts. Early or later models (identification made by serial number) may use different parts, or may require a different procedure in doing a specific service operation.

**NOTE: This document and the information provided are the property of SnowWolf and may only be used as authorized by SnowWolf.**

The serial number plate is located on the rear of the UltraPusher moldboard.

## Attachment Identification







---

Safety Information .....	9
Safe Operation Needs A Qualified Operator .....	9
Importance of Safety .....	10



## Safety Information

### Safety Alert Symbol

This SAFETY ALERT SYMBOL identifies important safety messages on the equipment and in the owner's manual. When you see this symbol, be alert to the possibility of personal injury and carefully read the message that follows.

### DANGER

The signal word DANGER on the machine and in the manuals indicates a hazardous situation which, if not avoided, will result in death or serious injury.

### WARNING

The signal word WARNING on the machine and in the manuals indicates a potentially hazardous situation which, if not avoided, could result in death or serious injury.

### CAUTION

The signal word CAUTION on the machine and in the manuals indicates a potentially hazardous situation which, if not avoided, may result in minor or moderate injury. It may also be used to alert against unsafe practices.

### IMPORTANT

The signal word IMPORTANT identifies procedures which must be followed to avoid damage to the machine.

## Safe Operation Needs A Qualified Operator

### WARNING

#### AVOID SERIOUS INJURY OR DEATH

Operators must receive instructions before operating the machine. Untrained operators can cause serious injury or death.

For an operator to be qualified, he or she must not use drugs or alcoholic drinks which impair alertness or coordination while working. An operator who is taking prescription drugs must get medical advice to determine if he or she can safely operate a machine and the equipment.

### Owner's Responsibility

Operate and maintain this machine in a safe manner and in accordance with all applicable local, state, and federal codes, regulations and/or laws; and in compliance with on-product labeling and this owner's manual instructions.

Make sure that all personnel have read this owner's manual, and thoroughly understand safe and correct installation, operation and maintenance procedures

Give operating instructions to the operators before allowing them to operate the machine, and at least annually thereafter.

## Importance of Safety

### Operating Safety

- Read and follow instructions in this manual and the machine's Operators Manual before operating.
- The UltraPusher attachment is intended for use in snow removal. Use of this equipment in any other manner is considered to be contrary to the intended use of the attachment.
- Under no circumstances should young children be allowed to work with this equipment.
- This equipment is dangerous to persons unfamiliar with its operation.
- Check for overhead and / or underground lines before operating equipment (if applicable).
- In addition to the design and configuration of equipment, hazard control and accident prevention are dependent upon the awareness, concern, prudence and proper training of personnel involved in the operation, transport, maintenance and storage of equipment.
- Check that the attachment is securely fastened to the machine.
- Make sure all the machine controls are in NEUTRAL before starting the machine.
- Operate the equipment only from the operator's position.
- Operate the equipment according to the Operator's Manual.
- When learning to operate the equipment, do it at a slow rate in an area clear of bystanders.
- DO NOT permit personnel to be in the work area when operating the equipment.
- The equipment must be used ONLY on approved machines.
- DO NOT modify the equipment in any way. Unauthorized modification may impair the function and / or safety and could affect the life of the equipment.
- DO NOT make any adjustments or repairs on the equipment while the machine is running.
- Keep shields and guards in place. Replace if damaged.
- DO NOT operate equipment in poor visibility conditions such as fog, darkness, or any conditions that limit clear visibility less than 300 feet (100 m) in front of and to the sides of the equipment.
- DO NOT operate in a work area that has not been inspected for foreign debris and obstacles.
- Remove any foreign objects and clearly mark any objects that cannot be removed.
- Wear safety glasses, gloves, hard hat, hearing protection and other protective clothing when operating or maintaining this equipment.

## Importance of Safety (Cont'd)

### Fire Prevention Safety

- Flammable debris (leaves, grass, etc.) must be removed regularly. If flammable debris is allowed to accumulate, it can cause a fire hazard. Clean often to avoid this accumulation.
- The equipment's hydraulic motor compartment must be inspected every day and cleaned if necessary to prevent fire hazards and overheating.
- All fuels, most lubricants and some coolant mixtures are flammable. Flammable fluids that are leaking or spilled onto hot surfaces or onto electrical components can cause a fire.

### Transporting Safety

- Comply with state and local laws governing highway safety and movement of machinery on public roads.
- Check local laws for all highway lighting and marking requirements.
- Always yield to oncoming traffic and move to the side of the road so any following traffic may pass.
- Never allow riders on either machine or equipment.
- If transporting the attachment on a truck or trailer, make sure it is properly secured to the transport vehicle.

### Hydraulic Safety

- Always clean fluid spills. Do not use gasoline or diesel fuel for cleaning parts. Use commercial nonflammable solvents.





---

General Information.....	15
Pre-Operation Inspection.....	15
Attachment Inspection.....	16
Daily Inspection.....	16
Monthly Inspection.....	16
Attachment Installation.....	17
Entering The Operator’s Position.....	17
Leaving The Operator’s Position.....	17
Connecting Attachment To The Machine.....	17
Operating The Attachment.....	19
Operation.....	19
Attachment Removal.....	20





# General Information

## Pre-Operation Inspection

Before operating the UltraPusher for the first time and each time thereafter, use the following list as a guideline during equipment inspection.

1. Use only a machine of adequate power and weight to operate the UltraPusher.
2. Check the UltraPusher and machine's quick tach mounts for damaged, loose or missing parts. Repair as needed before operation.
3. Check that the UltraPusher blade is properly attached to the machine. Be sure retainers are used on the mounting pins.
4. Check that wear shoes (if equipped) are set at the same working depth.
5. Make sure that all guards and shields are in place, secured and functioning as designed.
6. Check cutting blade for wear or damage.

## Attachment Inspection

### Daily Inspection

**NOTE: Inspect the attachment by performing a walk around daily before and after use. Use the following inspection checklist as a guideline.**

Check the following items every 10 hours of operation:

- Verify that the UltraPusher is properly connected to the machine.
- Check that all shields and guards are in place.
- Check moldboard cutting edge for wear or damage. Replace if necessary.
- Check Side Plates cutting edge's for wear or damage. Replace if necessary.
- Check that all cotter pins that retain pivot/ anchor pins are in place and not damaged or missing.
- Check the UltraPusher to ensure that all components are secure and that all bolts and nuts are thoroughly tightened.
- Check the UltraPusher mounting hardware for wear or damage. Inspect the pins and mount (on the attachment) for wear or damage. Repair or replace damaged parts if necessary.

### Monthly Inspection

- Inspect the UltraPusher for cracks, bends, or excessive wear.
- Check wear plates (if equipped) for wear.
- Check that all bolts are tight.
- Check blade and mounting plate for cracks or damage. Replace if necessary.
- Check Side Plates cutting edge's for cracks or damage. Replace if necessary.
- Check for damaged or missing decals. Replace if necessary.
- Lubricate as required.



## WARNING

### AVOID SERIOUS INJURY OR DEATH

#### Before servicing the attachment:

- **Always park on a flat level surface.**
- **Lower lift arms and place attachment flat on the ground.**
- **Place all controls in NEUTRAL.**
- **Engage the park brake.**
- **Wait for all moving parts to stop.**
- **Stop the engine and remove the key.**

**SEE MACHINE'S OPERATOR'S MANUAL FOR ADDITIONAL INFORMATION.**

## Attachment Installation



### IMPORTANT



See the machine's Operator's Manual for detailed information on operating the loader.

### Entering The Operator's Position

Use the attachment safety treads, handles and steps (on the machine) to enter the operator's position.

When in the operator's position, lower safety seat bar, start the engine and release the parking brake.

### Leaving The Operator's Position



### WARNING

#### AVOID SERIOUS INJURY OR DEATH

**Before leaving the operator's position:**

- Always park on a flat level surface.
- Lower lift arms and place attachment flat on the ground.
- Place all controls in **NEUTRAL**.
- Engage the park brake.
- Stop the engine and remove the key.
- Wait for all moving parts to stop.

**SEE MACHINE'S OPERATOR'S MANUAL FOR ADDITIONAL INFORMATION.**

Park the machine / attachment on a flat level surface.

Place all controls in neutral, engage the park brake, stop the engine and wait for all moving parts to stop. Leave the operator's position.

### Connecting Attachment To The Machine



### WARNING



#### CRUSH HAZARD

- Before moving the machine, look in all directions and make sure no bystanders, especially small children are in the work area. Do not allow anyone between the machine and attachment when approaching the attachment for connecting.
- Keep fingers and hands out of pinch points when connecting and disconnecting attachment.

Before connecting to the attachment, inspect the machine's mounting plate. (See the machine's Operator's Manual for inspecting the mounting frame).

Enter the operator's position. See "Entering The Operator's Position" on page 17.

Lower the machine's lift arm and tilt the machine's mounting plate forward.

Drive the machine slowly forward until the top edge of the machine's mounting frame is completely under the mounting flange of the UltraPusher mounting frame.

Slowly raise and tilt the machine's mounting plate back until the UltraPusher is slightly off the ground and attachment mounting frame fully contacts the front of the machine's mounting plate.

## Connecting Attachment To The Machine (Cont'd)

Engage machine's locking levers / wedges to securely fasten the UltraPusher to the machine's mounting frame. (See the machine's Operation Manual for the correct procedure.)

Visually inspect that the wedge pins are securely fastened into the UltraPusher mounting frame.



### **WARNING**

#### **AVOID SERIOUS INJURY OR DEATH**

**The locking pins / wedges must extend through the holes in the attachment mounting frame. Failure to secure locking pins / wedges can allow attachment to come off.**

**SEE MACHINE'S OPERATOR'S MANUAL FOR ADDITIONAL INFORMATION.**

---

Engage machine's locking levers / wedges (See the machine's Operator's Manual for detailed information).

# Operating The Attachment

## Operation

### **WARNING**

#### **AVOID INJURY OR DEATH**

##### **While operating the machine:**

- Always keep seat belt fastened.
- Safety seat bar lowered (if equipped)

**Always keep your feet on the pedals or footrests and hands on the controls**

---

Enter the machine. (See “Entering The Operator’s Position” on page 17.)

Start the engine and release the parking brake.

Raise the UltraPusher slightly off the ground.

Set the desired left/right blade angle and up/down tilt.

Regulate the scraping ability of the UltraPusher by increasing or decreasing the down pressure applied via the tilt cylinders.

**NOTE: Always be sure the mounting frame of the UltraPusher is level (parallel) with the ground when plowing, to insure proper cutting edge wear.**

**NOTE: The machine speed is determined by the depth and density of the material being moved.**

**NOTE: On extremely uneven ground, raise the boom arms slightly, lower the UltraPusher to the ground using the tilt cylinders, then put the boom arms in the float position (if machine is equipped) to follow the contours of the ground.**

### *Stacking Snow*

The UltraPusher has been designed to stack snow if desired.

### **WARNING**

#### **AVOID SERIOUS INJURY OR DEATH**

**Always be aware of overhead obstacles or power lines when stacking snow.**

---

## Attachment Removal

**NOTE: Put the UltraPusher on planks or blocks before removing it from the machine to prevent it from settling or sinking in soft / wet ground.**

Park the machine and attachment on a flat level surface.

Lower the lift arms and put the UltraPusher flat on the ground.

Leave the operator's position. (See "Leaving The Operator's Position" on page 17.)

Disengage the attachment locking levers / wedges. (See the machine's Operator's Manual for correct procedure.)

Slowly tilt the machine's mounting plate forward until the attachment mounting frame is free from the machine's mounting plate.

Drive the machine slowly backward, away from the attachment.



Maintenance Safety .....23

    General Maintenance .....24

UltraPusher Maintenance .....25

    Cutting Edge Replacement .....25

    Cutting Edge Trip Spring Adjustment .....26

    Side Plate Wear Shoe Adjustment (if equipped) .....26

    Side Plate Wear Shoe Replacement (if equipped) .....27

Troubleshooting .....28

Storage And Return To Service .....29





## Maintenance Safety



### **AVOID SERIOUS INJURY OR DEATH**

**Never operate the machine in a closed building. Proper ventilation is required when operating the machine under all circumstances.**

- Always keep the work area clean and dry.
  - Always use personal protection devices such as eye, hand and hearing protection when performing any service or maintenance.
  - A fire extinguisher and first aid kit should be readily accessible while performing maintenance on this machine.
  - Before working or doing maintenance on this machine, shut off the engine and remove the key. Make sure the machine's wheels are blocked.
  - Never work under the machine or attachment unless the machine or equipment is blocked or supported securely.
  - Disconnect the battery (both terminals) before welding on any part of the machine. Failure to do so may cause damage to electrical components.
  - When working around batteries, remember that all of the exposed metal parts are "live". Never lay a metal object across the terminals because a spark, short circuit, explosion or personal injury may result.
  - Battery posts, terminals and related accessories contain lead and lead compounds. **Wash hands after handling.**
- When replacement parts are necessary, genuine factory replacement parts must be used to restore your equipment to original specifications. SnowWolf will not be responsible for injuries or damage caused by use of unapproved parts and / or accessories.
  - When completing service or maintenance on this machine, make sure all shields and guards are installed before placing the machine into service.

## General Maintenance

### **WARNING**

#### **AVOID SERIOUS INJURY OR DEATH**

**Before operating or servicing system: Read and understand the machine's owners manual. Follow the warnings and instructions in the manual when making repairs, adjustments, or servicing. Check for correct function after adjustments, repairs or service. Untrained operators and failure to follow instructions can cause injury or death.**

---

To ensure efficient operation, you should inspect, lubricate, and make necessary adjustments and repairs at regular intervals. Keep good maintenance records and adequately clean your machine after each use.

Proper lubrication is important. Follow all lubrication instructions and schedules included in this section.

#### **Daily Inspection:**

- All components and hardware to ensure equipment is secure and thoroughly tightened.
- Frame and all welds for cracks or damage.
- Wear plates (if equipped) for wear or damage.
- Mounting frame for proper operation and signs of damage or unusual wear.
- Safety signs and reflectors for damage. Replace any missing or damaged decals.
- Cutting edge for wear or damage.

**NOTE: Repair or replace any damaged parts.**

**NOTE: After initial use, or repair/replacement of damaged parts, it is important to check the repaired or replaced parts for proper bolt torque and operation.**

## UltraPusher Maintenance

### WARNING

**AVOID SERIOUS INJURY OR DEATH**

Always turn off and lockout power before servicing the attachment.

### WARNING

**AVOID SERIOUS INJURY OR DEATH**

Securely block up the attachment before working underneath.

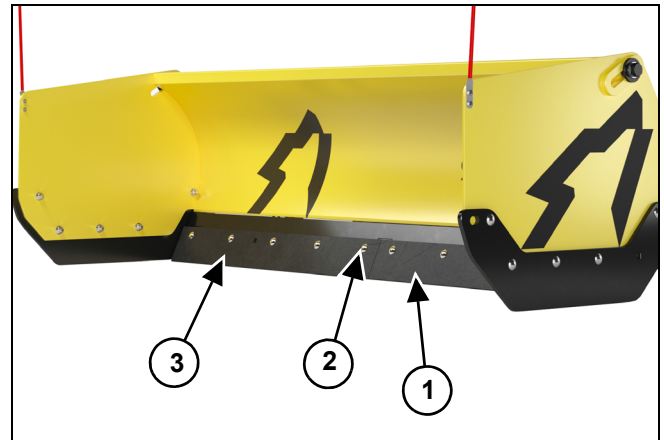
## Cutting Edge Replacement

**NOTE: Replace or flip the bolt-on cutting edge when it wears within 1/2" - 3/4" of the bolt head securing it to the trip-edge. Replace only with genuine SnowWolf cutting edge and hardware.**

1. Park the machine on a level surface with the UltraPusher properly attached.
2. Lower the UltraPusher approximately three to four inches off the ground.
3. Engage the parking brake.
4. Shut off the machine's engine, remove the ignition key (if equipped), wait for all moving parts to come to a stop.
5. Block and/or support the UltraPusher with proper lifting device capable of sufficiently supporting the unit's weight.

**NOTE: The cutting edge and hardware quantity will vary depending upon the UltraPusher model.**

Figure 1



6. Block the cutting edge (Item 1) [Figure 1], remove the fasteners (Item 2) and remove the cutting edge.

**NOTE: Be cautious as the cutting edge and hardware may be sharp.**

7. Repeat procedure for the cutting edge (Item 3) [Figure 1].
8. Properly dispose of the old cutting edges and install the new cutting edge's by reversing the steps listed here.

**NOTE: Replace worn or damaged fasteners as needed.**

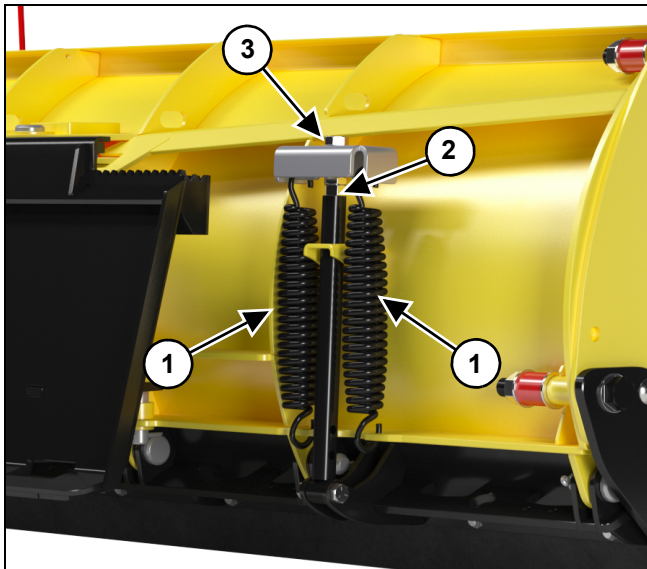
## Cutting Edge Trip Spring Adjustment



### IMPORTANT

Set trip springs after first use, then twice per year thereafter.

Figure 2



Cutting edge trip springs (Item 1) [Figure 2] are adjusted by loosening the jam nut (Item 2) located on the rod between each spring, then tightening or loosening the threaded bolt (Item 3).

Springs are adjusted correctly when there is a .001" gap between the coils. Tighten jam nut.

**NOTE: Use grease or "Anti Seize" on the rod and jam nut to prevent rusting.**

**NOTE: Adjust trip springs evenly on both sides.**

## Side Plate Wear Shoe Adjustment (if equipped)

Place blocks under the UltraPusher (both sides) to hold the wear shoe off the ground.

Loosen the nuts and bolts and adjust wear shoe for desired blade clearance. Tighten nuts and bolts.

Repeat procedures on the opposite side.

**NOTE: Wear shoes must be set to the same height.**

## Side Plate Wear Shoe Replacement (if equipped)

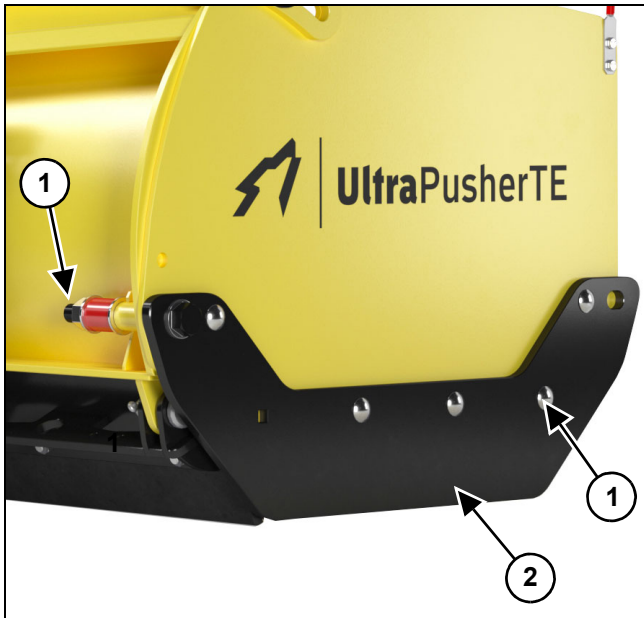
### **WARNING**

#### **AVOID SERIOUS INJURY OR DEATH**

Securely block up the attachment before working underneath. Be cautious as the cutting edge and hardware may be sharp.

Place blocks under the UltraPusher (both sides) to hold the side wing cutting edges off the ground.

**Figure 3**



Remove the nuts and bolts (Item 1) **[Figure 3]**, and cutting edge (Item 2).

Install new cutting edge and bolts. Tighten hardware.

Repeat procedures on the opposite side.

## Troubleshooting

PROBLEM	CAUSE	CORRECTION
UltraPusher leaving snow behind.	Cutting edge worn or damaged.	Replace the cutting edge.
	Blade tilted too high.	Adjust machines lift and tilt controls.
	Wear shoes out of adjustment.	Raise or lower wear shoes as needed.
Side Plate will not oscillate.	Mounting hardware too tight.	Loosen hardware until Side Plate moves freely.
	Wing is bent.	Repair or replace bent wing.
	Missing/worn nylon spacer.	Replace nylon spacer.

## Storage And Return To Service

### Storage

After the seasons use or when the UltraPusher will not be in use for a period of time, perform the following steps.

- Thoroughly wash the UltraPusher.
- Make sure all covers, guards and shields are installed.
- Inspect all components and hardware to ensure everything is secure and thoroughly tightened.
- Inspect the frame and all welds for cracks or damage.
- Apply a light coat of grease to the cylinder rods to prevent rust.
- Inspect the attachment mounting frame for wear or damage.
- Check that all decals and/or reflectors are in good condition and legible. Replace any damaged or missing decals.
- Place the UltraPusher in a dry protected shelter.

**NOTE: Replace or repair any damaged parts.**

### Return to Service

After the UltraPusher has been in storage, it is necessary to follow a list of items to return the UltraPusher to service.

- Make sure all covers, guards and shields are installed.
- Inspect all components and hardware to ensure everything is secure and thoroughly tightened.
- Inspect the decals and reflectors for missing or damage.
- Install and operate the UltraPusher and check for correct function.







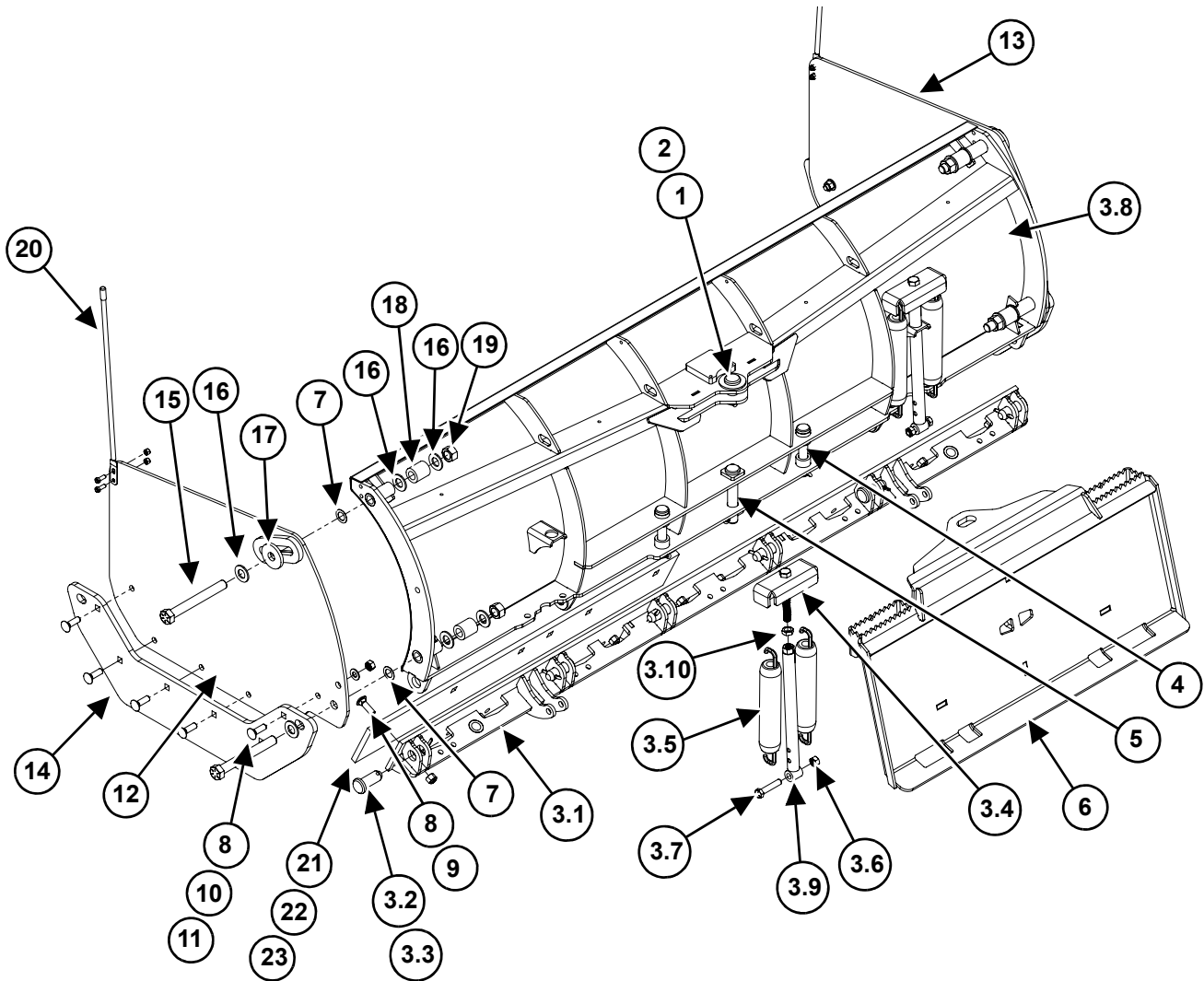
Models UPTE 84, UPTE 96, UPTE 108, UPTE 120.....34  
 Parts.....34  
 Options.....36  
 Models UPTE/XT108, UPTE/XT120, UPTE/XT132 .....38  
 Parts.....38  
 Options.....40  
 Trip Edge Generations .....42  
 Options .....43  
     ActivEdge, AR400, 18” Sectional Blade .....43  
     ActivEdge, AR400, 24” Sectional Blade .....44  
     ActivEdge, Carbide, 18” Sectional Blade.....45  
     ActivEdge, Carbide, 24” Sectional Blade.....46  
     Spill Guard.....47



This page left intentionally blank

# Models UPTE 84, UPTE 96, UPTE 108, UPTE 120

## Parts



ITEM	PART #	DESCRIPTION	UPTE-84 QTY	UPTE-96 QTY	UPTE-108 QTY	UPTE-120 QTY
1	P40006	PIN, UPPER, 1-3/16" x 3"	1	1	1	1
2	P40007	PIN, COTTER, 1/4" x 2"	6	6	6	6
3	P40084	BLADE ASSEMBLY, FOR ULTRA-84	1	-	-	-
	P40096	BLADE ASSEMBLY, FOR ULTRA-96	-	1	-	-
	P40108	BLADE ASSEMBLY, FOR ULTRA-108	-	-	1	-
	P40120	BLADE ASSEMBLY, FOR ULTRA-120	-	-	-	1

ITEM	PART #	DESCRIPTION	UPTE-84 QTY	UPTE-96 QTY	UPTE-108 QTY	UPTE-120 QTY
3.1	P40002-L	TRIP EDGE WELDMENT 7FT	1	-	-	-
	P40002-M	TRIP EDGE WELDMENT 8FT	-	1	-	-
	P40002-N	TRIP EDGE WELDMENT 9FT	-	-	1	-
	P40002-O	TRIP EDGE WELDMENT 10FT	-	-	-	1
3.2	P40006	PIN, UPPER PIVOT/TRIP EDGE 1-3/16" x 3"	6	6	6	6
3.3	P40007	PIN, COTTER, 1/4" x 2"	6	6	6	6
3.4	P40009-B	SPRING ADJUSTMENT ASM	2	2	2	2
3.5	P40010B	SPRING, TRIP, 6'-10' NEW STYLE (15" LONG)	4	4	4	4
3.6	P40012	NUT, LOCK, 5/8-11, GR C	2	2	2	2
3.7	P40013	BOLT, HEX, 5/8-11 x 3", GR 8	2	2	2	2
3.8	P40015	BLADE WELDMENT ONLY, ULTRA-84 (NO SPRINGS OR TRIP EDGE)	1	-	-	-
	P40016	BLADE WELDMENT ONLY, ULTRA-96 (NO SPRINGS OR TRIP EDGE)	-	1	-	-
	P40017	BLADE WELDMENT ONLY, ULTRA-108 (NO SPRINGS OR TRIP EDGE)	-	-	1	-
	P40018	BLADE WELDMENT ONLY, ULTRA-120 (NO SPRINGS OR TRIP EDGE)	-	-	-	1
3.9	P40026	SPRING ADJUSTMENT ROD ASM	2	2	2	2
3.10	P60242	NUT, JAM, 3/4-10, GRADE 8	2	2	2	2
4	P50003	PIN, LOWER PIVOT 1-1/8" x 6-3/4"	3	3	3	3
5	P50004	PIN, RAM ANCHOR, 1" x 6"	2	2	2	2
6	P60200	WELDMENT, MOUNTING FRAME	1	1	1	1
7	P25033	WASHER, FIBER, 1"	4	4	4	4
8	P60010	BOLT, CARRIAGE, 5/8-11 x 2", GR 5	9	10	12	13
9	P60030	NUT, HEX, NYLOCK, 5/8-11	9	10	12	13
10	P60096	WASHER, FLAT, 5/8"	10	10	10	10
11	P40012	NUT, LOCK, 5/8-11, GRADE C	4	4	4	4
12	P60201	SIDE PLATE, LH	1	1	1	1
13	P60202	SIDE PLATE, RH	1	1	1	1
14	P60203	WEAR SHOE	2	2	2	2
15	P60204	BOLT, 1" x 8-1/2", GRADE 8	4	4	4	4
16	P60206	WASHER, FLAT, 5/8"	12	12	12	12
17	P60207	WASHER, MACHINED, 1"	2	2	2	2
18	P60205	SPACER, URETHANE, 95A	4	4	4	4
19	P60024	NUT, LOCK, GRADE C	4	4	4	4
20	P50001	BLADE MARKER GUIDE SET	1	1	1	1
For items 21 or above: See "Options" on page 36.						

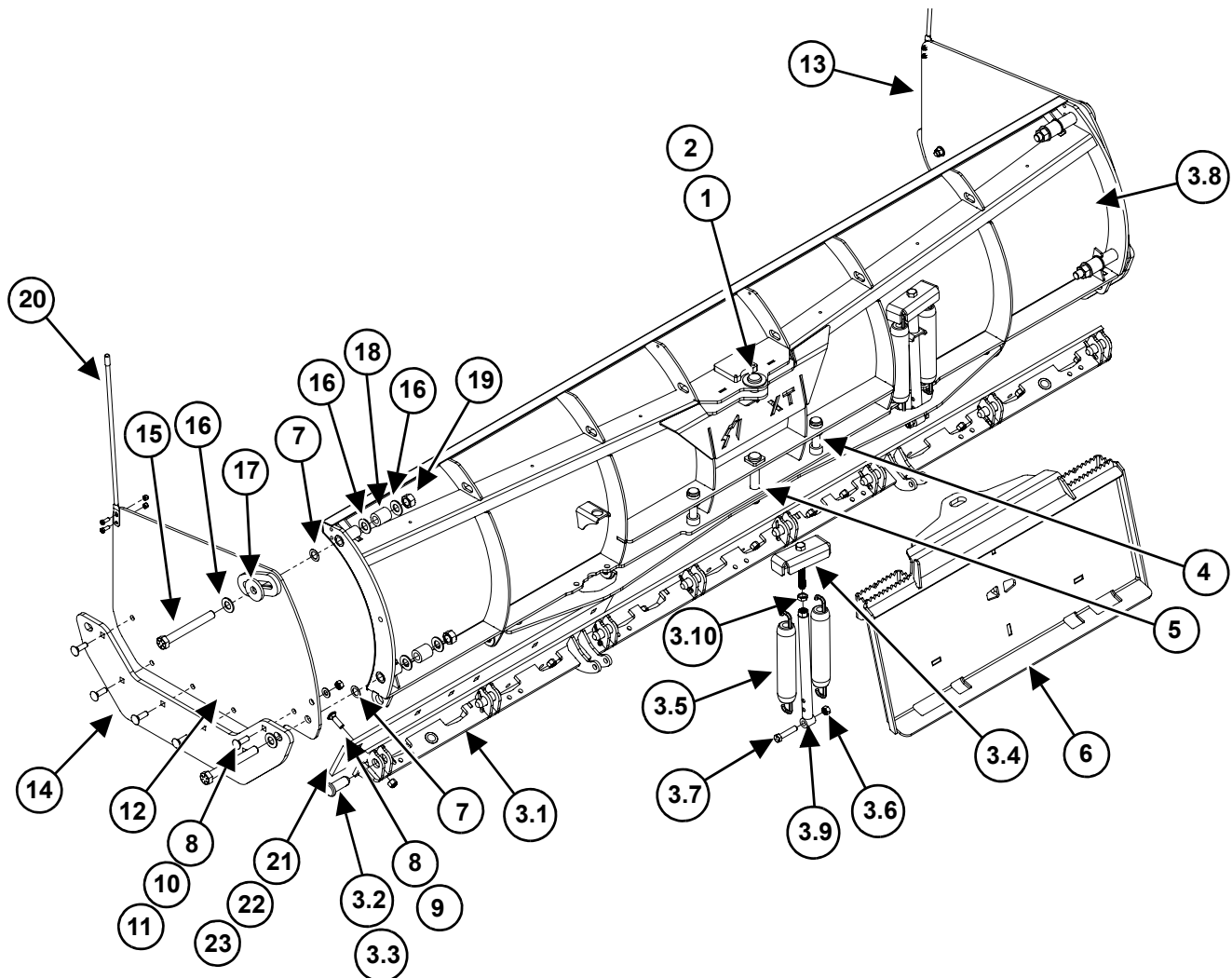
## Options

ITEM	PART #	DESCRIPTION	UPTE-84 QTY	UPTE-96 QTY	UPTE-108 QTY	UPTE-120 QTY
	<b>FRAME</b>					
	<b>MAIN EDGE - (See Trip Edges on page 42)</b>					
	<b>Steel Options</b>					
21	P50011-C	CENTER PUNCH CUTTING EDGE KIT, 7', w/ HW (GEN 1, 2 OR 3 TRIP EDGE)	1	0	0	0
	P50011-E	CENTER PUNCH CUTTING EDGE KIT, 8', w/ HW (GEN 1, 2 OR 3 TRIP EDGE)	0	1	0	0
	P50011-G	CENTER PUNCH CUTTING EDGE KIT, 9', w/ HW (GEN 1, 2 OR 3 TRIP EDGE)	0	0	1	0
	P50011-H	CENTER PUNCH CUTTING EDGE KIT, 10', w/ HW (GEN 1, 2 OR 3 TRIP EDGE)	0	0	0	1
22	P50011-L	TOP PUNCH CUTTING EDGE KIT, 7', w/ HW (GEN 4 OR 5 TRIP EDGE)	1	0	0	0
	P50011-M	TOP PUNCH CUTTING EDGE KIT, 8', w/ HW (GEN 4 OR 5 TRIP EDGE)	0	1	0	0
	P50011-N	TOP PUNCH CUTTING EDGE KIT, 9', w/ HW (GEN 4 OR 5 TRIP EDGE)	0	0	1	0
	P50011-O	TOP PUNCH CUTTING EDGE KIT, 10', w/ HW (GEN 4 OR 5 TRIP EDGE)	0	0	0	1
	<b>SoftTouch Options - (Works with any Trip Edge)</b>					
23	P50012-C1	7' SOFTTOUCH CUTTING EDGE KIT w/ HW	1	0	0	0
	P50012-E1	8' SOFTTOUCH CUTTING EDGE KIT w/ HW	0	1	0	0
	P50012-G1	9' SOFTTOUCH CUTTING EDGE KIT w/ HW	0	0	1	0
	P50012-H1	10' SOFTTOUCH CUTTING EDGE KIT w/ HW	0	0	0	1
	<b>ActivEdge, AR400</b>					
NS	P50011-L-REK	7' ActivEdge CUTTING KIT w/ HW	1	0	0	0
NS	P50011-M-REK	8' ActivEdge CUTTING KIT w/ HW	0	1	0	0
NS	P50011-N-REK	9' ActivEdge CUTTING KIT w/ HW	0	0	1	0
NS	P50011-O-REK	10' ActivEdge CUTTING KIT w/ HW	0	0	0	1
	<b>ActivEdge, AR400 UPGRADE - Requires Generation 5 Trip Edge (not included)</b>					
NS	P50011-L-SEC	7' ActivEdge UPGRADE KIT w/ CARBIDE	1	0	0	0
NS	P50011-M-SEC	8' ActivEdge UPGRADE KIT w/ CARBIDE	0	1	0	0
NS	P50011-N-SEC	9' ActivEdge UPGRADE KIT w/ CARBIDE	0	0	1	0
NS	P50011-O-SEC	10' ActivEdge UPGRADE KIT w/ CARBIDE	0	0	0	1

ITEM	PART #	DESCRIPTION	UPTE-84 QTY	UPTE-96 QTY	UPTE-108 QTY	UPTE-120 QTY
<b>CARBIDE ActivEdge, AR400 WITH CARBIDE</b>						
NS	P50014-L-REK	7' ActivEdge CUTTING KIT w/ HW	1	0	0	0
NS	P50014-M-REK	8' ActivEdge CUTTING KIT w/ HW	0	1	0	0
NS	P50014-N-REK	9' ActivEdge CUTTING KIT w/ HW	0	0	1	0
NS	P50014-O-REK	10' ActivEdge CUTTING KIT w/ HW	0	0	0	1
<b>CARBIDE ActivEdge, AR400 WITH CARBIDE UPGRADE - Requires Generation 5 Trip Edge (not included)</b>						
NS	P50014-L	7' ActivEdge UPGRADE KIT w/ CARBIDE	1	0	0	0
NS	P50014-M	8' ActivEdge UPGRADE KIT w/ CARBIDE	0	1	0	0
NS	P50014-N	9' ActivEdge UPGRADE KIT w/ CARBIDE	0	0	1	0
NS	P50014-O	10' ActivEdge UPGRADE KIT w/ CARBIDE	0	0	0	1
<b>SPILL GUARD (OPTION)</b>						
NS	P60276-K	SPILL GUARD 7'	1	0	0	0
NS	P60270-K	SPILL GUARD 8'	0	1	0	0
NS	P60271-K	SPILL GUARD 9'	0	0	1	0
NS	P60272-K	SPILL GUARD 10'	0	0	0	1

# Models UPTE/XT108, UPTE/XT120, UPTE/XT132

## Parts



ITEM	PART #	DESCRIPTION	UPTE/XT-108 QTY	UPTE/XT-120 QTY	UPTE/XT-132 QTY
1	P40006	PIN, UPPER, 1-3/16" x 3"	1	1	1
2	P40007	PIN, COTTER, 1/4" x 2"	6	6	6
3	P40108	BLADE ASSEMBLY, FOR ULTRA-108	1	-	-
	P40120	BLADE ASSEMBLY, FOR ULTRA-120	-	1	-
	P40132	BLADE ASSEMBLY, FOR ULTRA-132	-	-	1
3.1	P40002-N	TRIP EDGE WELDMENT 9FT	1	-	-
	P40002-O	TRIP EDGE WELDMENT 10FT	-	1	-
	P40002-P	TRIP EDGE WELDMENT 11FT	-	-	1
3.2	P40006	PIN, UPPER PIVOT/TRIP EDGE 1-3/16" x 3"	6	6	6
3.3	P40007	PIN, COTTER, 1/4" x 2"	6	6	6



ITEM	PART #	DESCRIPTION	UPTE/XT-108 QTY	UPTE/XT-120 QTY	UPTE/XT-132 QTY
3.4	P40009-B	SPRING ADJUSTMENT ASM	2	2	2
3.5	P40010B	SPRING, TRIP, 6'-10' NEW STYLE (15" LONG)	4	4	4
3.6	P40012	NUT, LOCK, 5/8-11, GRADE C	2	2	2
3.7	P40013	BOLT, HEX, 5/8-11 x 3", GRADE 8	2	2	2
3.8	P40017	BLADE WELDMENT ONLY, ULTRA-108 (NO SPRINGS OR TRIP EDGE)	1	-	-
	P40018	BLADE WELDMENT ONLY, ULTRA-120 (NO SPRINGS OR TRIP EDGE)	-	1	-
	P40019	BLADE WELDMENT ONLY, ULTRA-132 (NO SPRINGS OR TRIP EDGE)	-	-	1
3.9	P40026	SPRING ADJUSTMENT ROD ASM	2	2	2
3.10	P60242	NUT, JAM, 3/4-10, GRADE 8	2	2	2
4	P50003	PIN, LOWER PIVOT 1-1/8" x 6-3/4"	1	1	1
5	P50004	PIN, RAM ANCHOR, 1" x 6"	2	2	2
6	P60200	WELDMENT, MOUNTING FRAME	1	1	1
7	P25033	WASHER, FIBER, 1"	4	4	4
8	P60010	BOLT, CARRIAGE, 5/8-11 x 2", GRADE 5	12	13	14
9	P60030	NUT, HEX, NYLOCK, 5/8-11	12	13	14
10	P60096	WASHER, FLAT, 5/8"	10	10	10
11	P40012	NUT, LOCK, 5/8-11, GRADE C	4	4	4
12	P60201	SIDE PLATE, LH	1	1	1
13	P60202	SIDE PLATE, RH	1	1	1
14	P60203	WEAR SHOE	2	2	2
15	P60204	BOLT, 1" x 8-1/2", GRADE 8	4	4	4
16	P60206	WASHER, FLAT, 5/8"	12	12	12
17	P60207	WASHER, MACHINED, 1"	2	2	2
18	P60205	SPACER, URETHANE, 95A	4	4	4
19	P60024	NUT, LOCK, GRADE C	4	4	4
20	P50001	BLADE MARKER GUIDE SET	1	1	1

For items 21 or above: See "Options" on page 40.

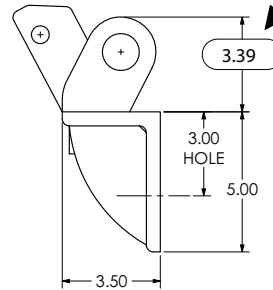
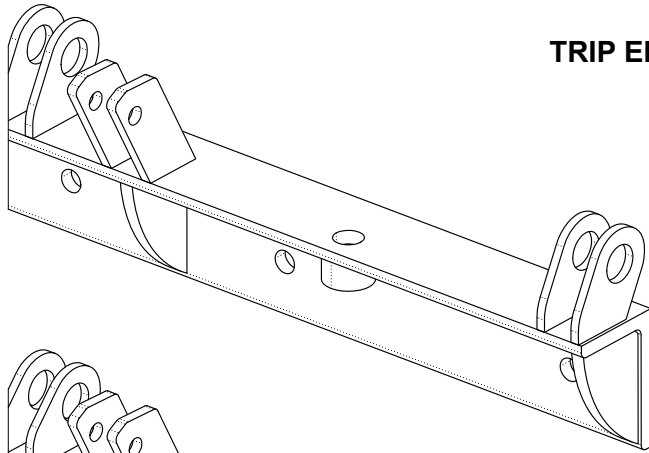
## Options

ITEM	PART #	DESCRIPTION	UPTE/ XT-108 QTY	UPTE/ XT-120 QTY	UPTE/ XT-132 QTY
	<b>MAIN EDGE</b> Steel Options See Trip Edges on page 42.				
21	P50011-G	CENTER PUNCH CUTTING EDGE KIT, 9', w/ HW (GEN 1, 2 OR 3 TRIP EDGE)	1	0	0
	P50011-H	CENTER PUNCH CUTTING EDGE KIT, 10', w/ HW (GEN 1, 2 OR 3 TRIP EDGE)	0	1	0
	P50011-I	CENTER PUNCH CUTTING EDGE KIT, 11', w/ HW (GEN 1, 2 OR 3 TRIP EDGE)	0	0	1
22	P50011-N	TOP PUNCH CUTTING EDGE KIT, 9', w/ HW (GEN 4 OR 5 TRIP EDGE)	1	0	0
	P50011-O	TOP PUNCH CUTTING EDGE KIT, 10', w/ HW (GEN 4 OR 5 TRIP EDGE)	0	1	0
	P50011-P	TOP PUNCH CUTTING EDGE KIT, 11', w/ HW (GEN 4 OR 5 TRIP EDGE)	0	0	1
	<b>ActivEdge, AR400</b>				
NS	P50011-N-REK	9' ActivEdge KIT w/ HW	1	0	0
NS	P50011-O-REK	10' ActivEdge KIT w/ HW	0	1	0
NS	P50011-P-REK	11' ActivEdge KIT w/ HW	0	0	1
	<b>ActivEdge, AR400 UPGRADE - Requires Generation 5 Trip Edge (not included)</b>				
NS	P50011-N-SEC	9' ActivEdge KIT w/ HW	1	0	0
NS	P50011-O-SEC	10' ActivEdge KIT w/ HW	0	1	0
NS	P50011-P-SEC	11' ActivEdge KIT w/ HW	0	0	1
	<b>CARBIDE ActivEdge, AR400 WITH CARBIDE</b>				
NS	P50014-N-REK	9' ActivEdge KIT w/ HW	1	0	0
NS	P50014-O-REK	10' ActivEdge KIT w/ HW	0	1	0
NS	P50014-P-REK	11' ActivEdge KIT w/ HW	0	0	1
	<b>CARBIDE ActivEdge, UPGRADE - Requires Generation 5 Trip Edge (not included)</b>				
NS	P50014-N	9' ActivEdge UPGRADE KIT w/ CARBIDE	1	0	0
NS	P50014-O	10' ActivEdge UPGRADE KIT w/ CARBIDE	0	1	0
NS	P50014-P	11' ActivEdge UPGRADE KIT w/ CARBIDE	0	0	1
	<b>SPILL GUARD (OPTION)</b>				
NS	P60271-K	SPILL GUARD 9'	1	0	0
NS	P60272-K	SPILL GUARD 10'	0	1	0
NS	P60273-K	SPILL GUARD 11'	0	0	1

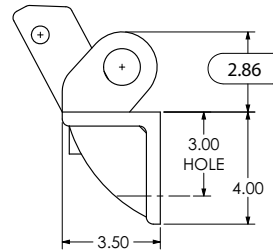
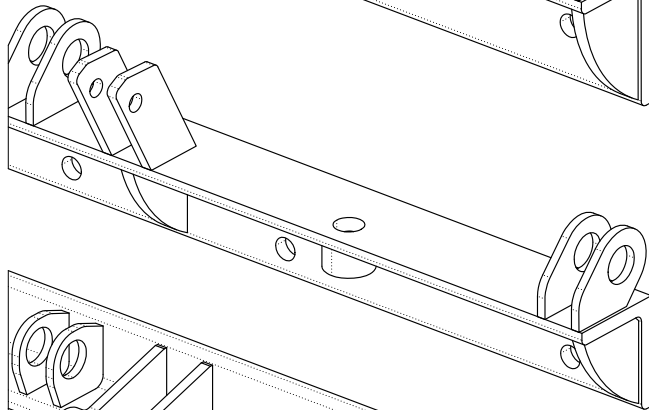
ITEM	PART #	DESCRIPTION	UPTE/ XT-108 QTY	UPTE/ XT-120 QTY	UPTE/ XT-132 QTY
	<b>SoftTouch Options (Works with any Trip Edge)</b>				
23	P50012-G1	9' SOFTTOUCH CUTTING EDGE KIT w/ HW	1	0	0
	P50012-H1	10' SOFTTOUCH CUTTING EDGE KIT w/ HW	0	1	0
	P50012-I1	11' SOFTTOUCH CUTTING EDGE KIT w/ HW	0	0	1

# Trip Edge Generations

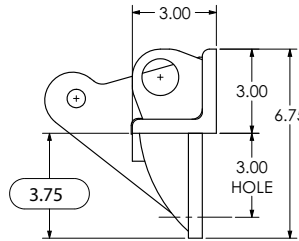
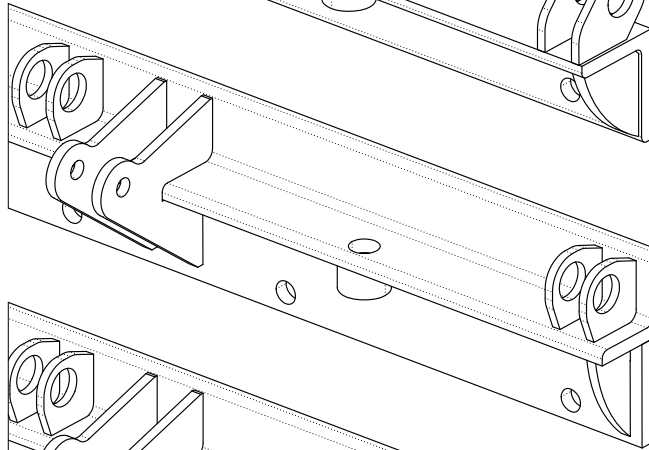
## TRIP EDGE MODEL IDENTIFYING DIMENSION



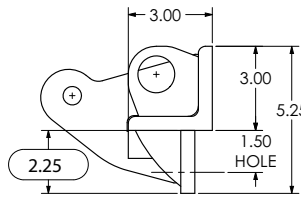
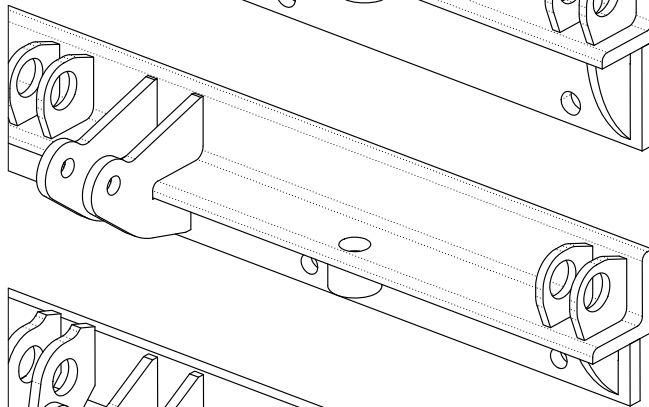
"3.39" EAR"  
GENERATION 1



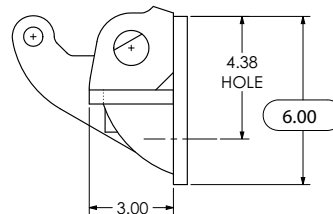
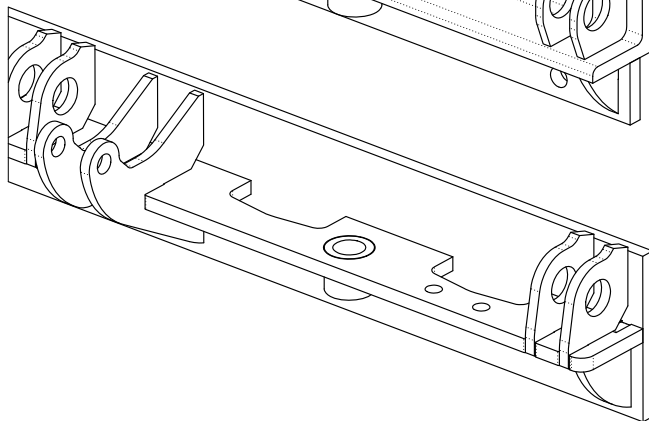
"2.86" EAR"  
GENERATION 2



"CENTER PUNCH"  
GENERATION 3



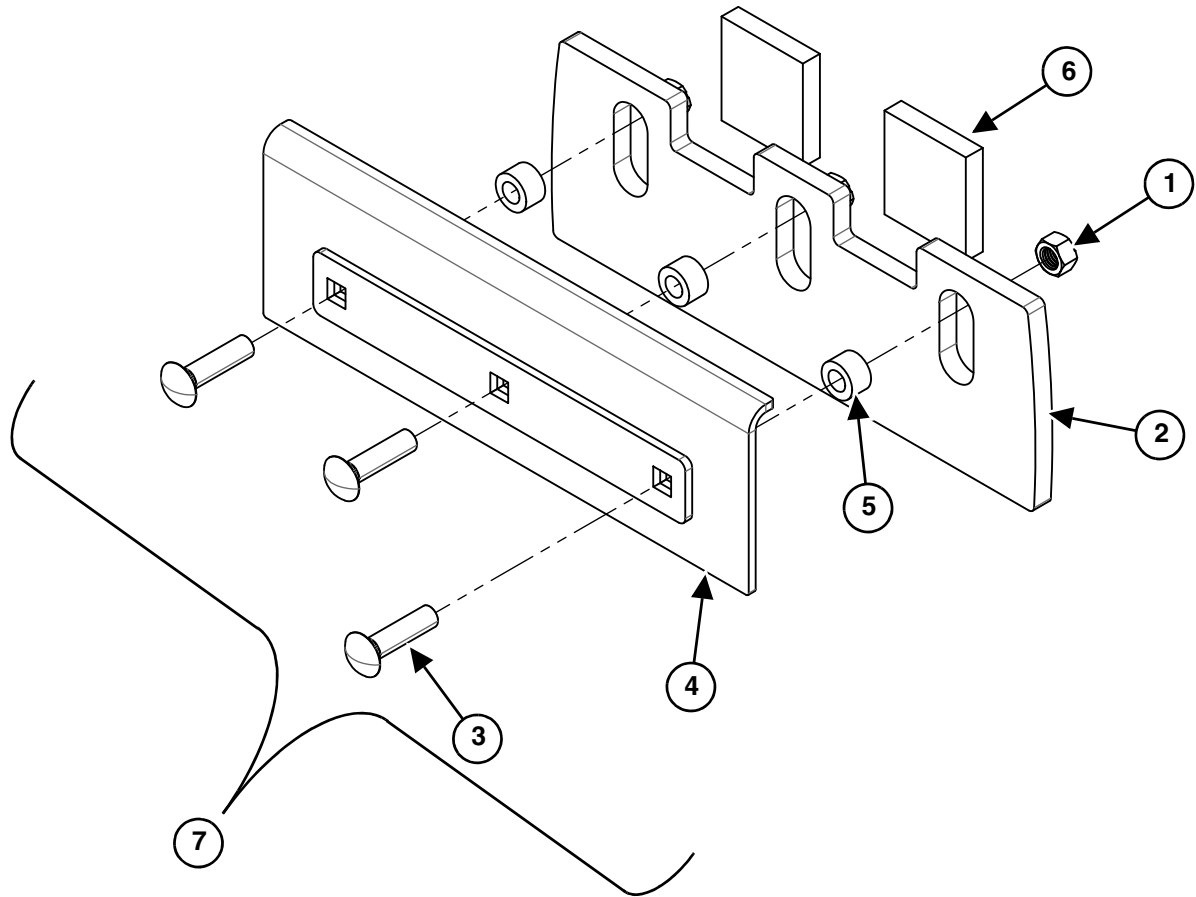
"TOP PUNCH"  
GENERATION 4



"CURRENT"  
GENERATION 5

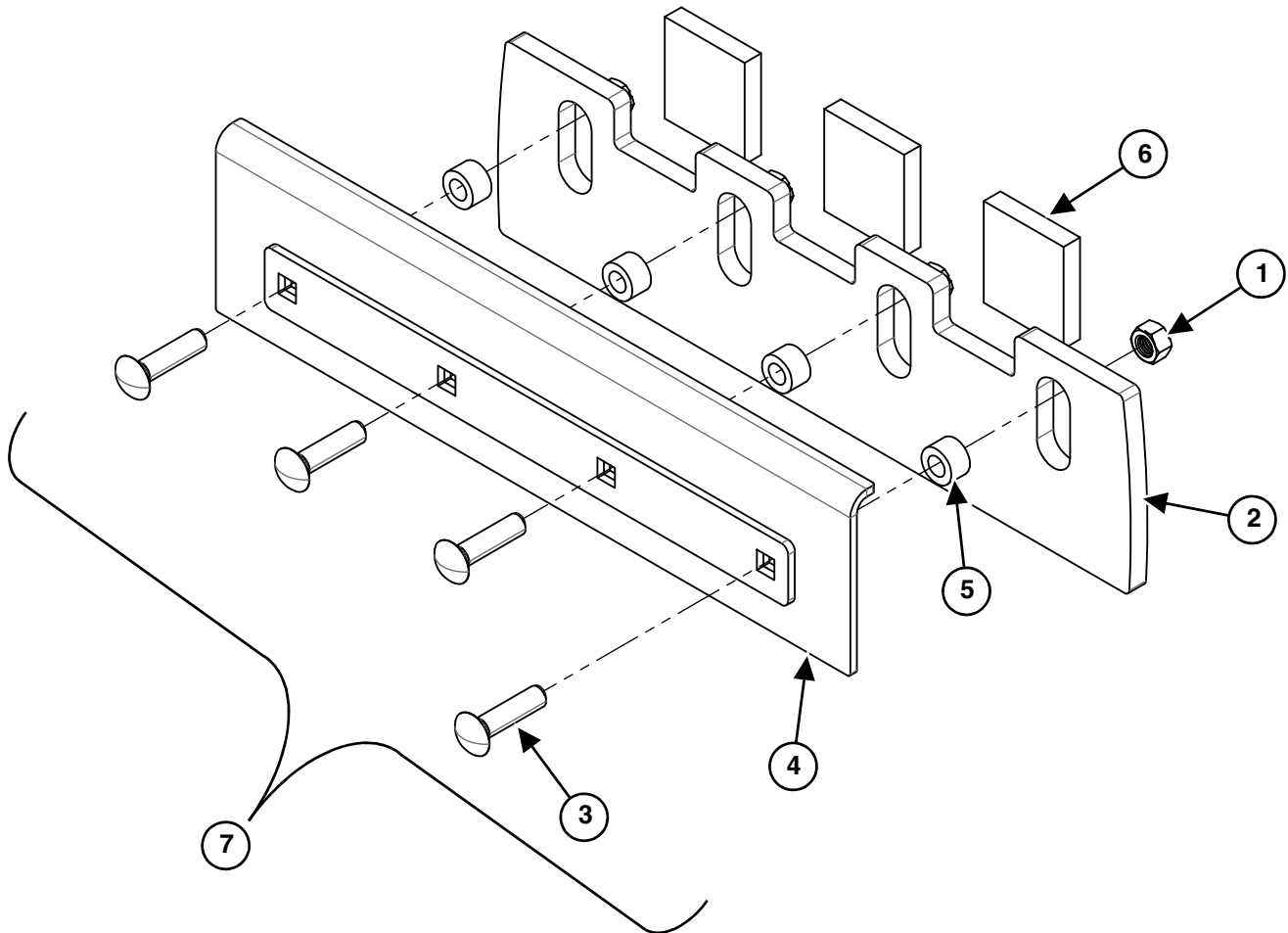
# Options

## ActivEdge, AR400, 18" Sectional Blade



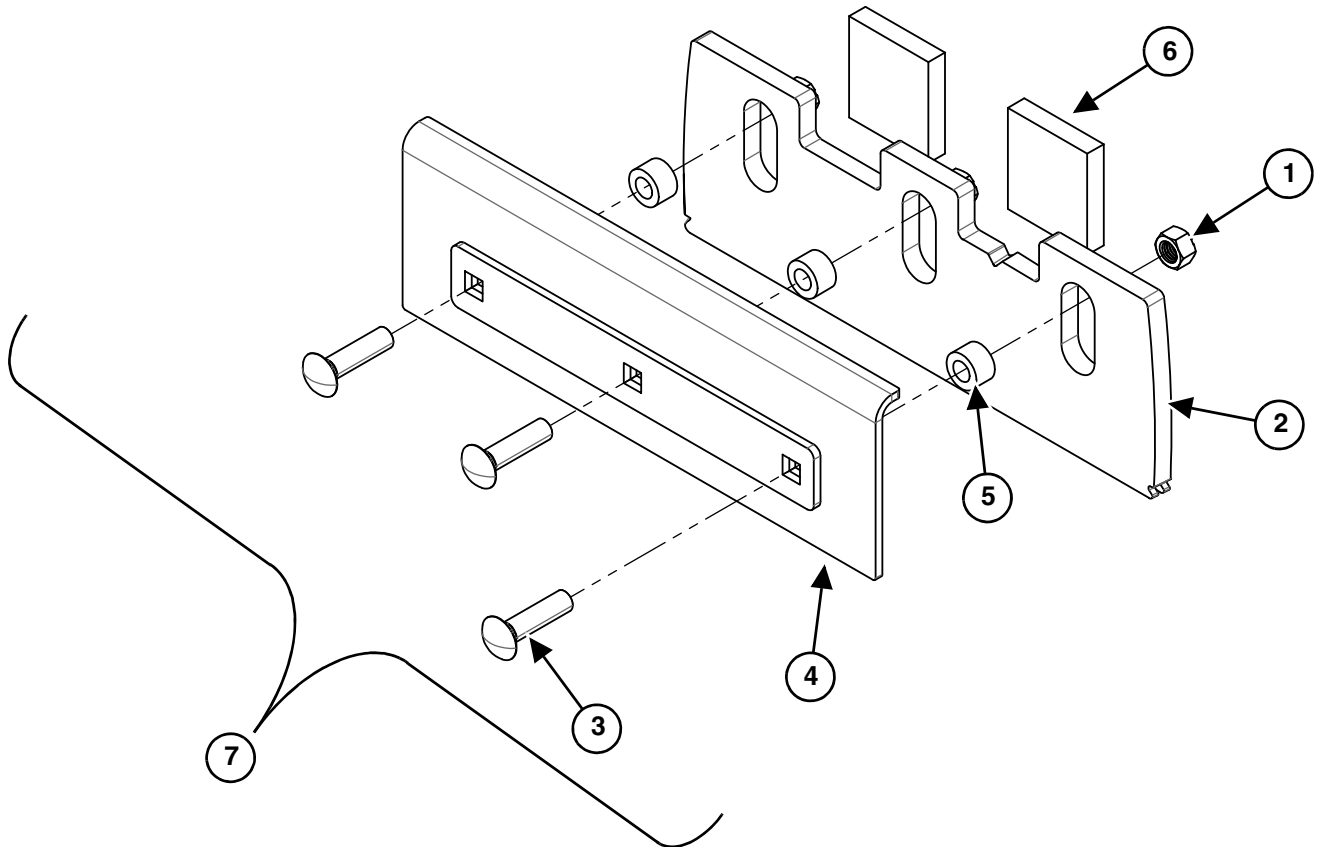
ITEM	PART #	DESCRIPTION	QTY
1	P40012	NUT, LOCK, 5/8-11	3
2	P50011-18-SEC	BLADE, 18"	1
3	P81011	BOLT, CARRIAGE, 5/8-11 x 2-1/2", GR 8	3
4	P60255	RETAINING WELDMENT, 18"	1
5	P60253	BUSHING, STANDOFF	3
6	P60254	SPRING, RUBBER	2
7	P60251-K	KIT, 18" SECTION (kit includes items 1, 2, 3, 4, 5, & 6)	1

## ActivEdge, AR400, 24" Sectional Blade



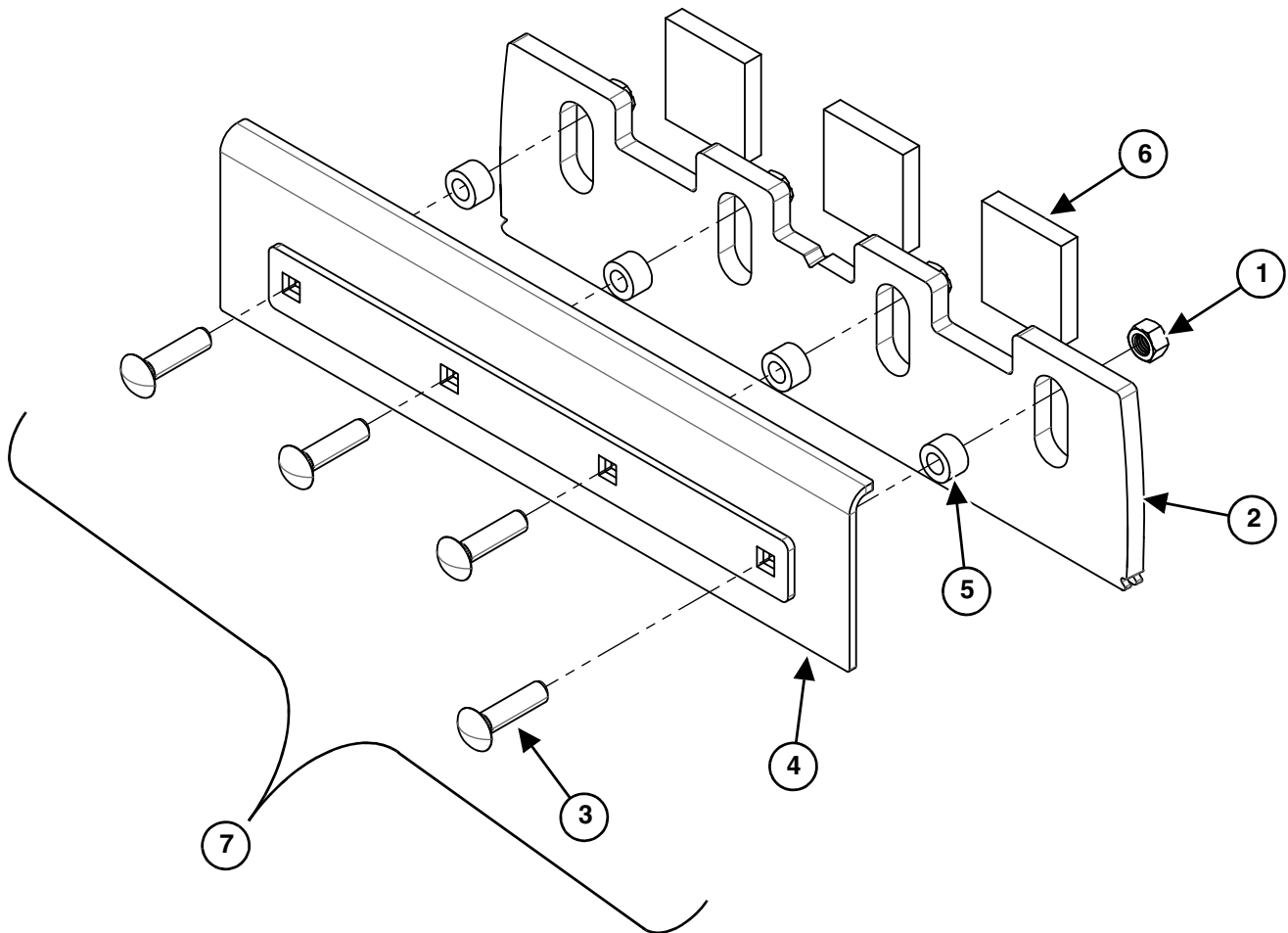
ITEM	PART #	DESCRIPTION	QTY
1	P40012	NUT, LOCK, 5/8-11	4
2	P50011-24-SEC	BLADE, 24"	1
3	P81011	BOLT, CARRIAGE, 5/8-11 x 2-1/2", GR 8	4
4	P60252	RETAINING WELDMENT, 24"	1
5	P60253	BUSHING, STANDOFF	4
6	P60254	SPRING, RUBBER	3
7	P60250-K	KIT, 24" SECTION (kit includes items 1, 2, 3, 4, 5, & 6)	1

### ActivEdge, Carbide, 18" Sectional Blade



ITEM	PART #	DESCRIPTION	QTY
1	P40012	NUT, LOCK, 5/8-11	3
2	P80109-CARB	BLADE, 24"	1
3	P81011	BOLT, CARRIAGE, 5/8-11 x 2-1/2", GR 8	3
4	P60255	RETAINING WELDMENT, 18"	1
5	P80107	BUSHING, STANDOFF	3
6	P60254	SPRING, FOAM	2
7	P80112-CARB-K	KIT, 18" SECTION (kit includes items 1, 2, 3, 4, 5, & 6)	1

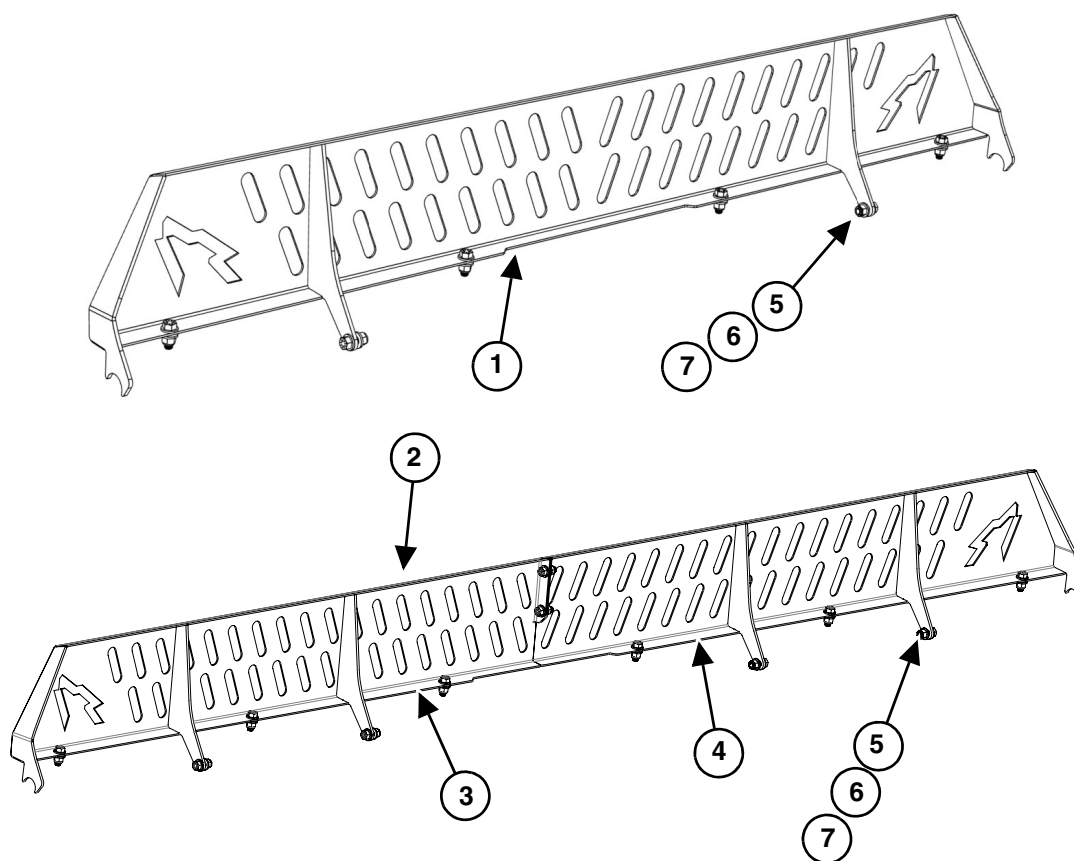
## ActivEdge, Carbide, 24" Sectional Blade



ITEM	PART #	DESCRIPTION	QTY
1	P40012	NUT, LOCK, 5/8-11	4
2	P80106-CARB	BLADE, 24"	1
3	P81011	BOLT, CARRIAGE, 5/8-11 x 2-1/2", GR 8	4
4	P60252	RETAINING WELDMENT, 24"	1
5	P80107	BUSHING, STANDOFF	4
6	P60254	SPRING, FOAM	3
7	P80110-CARB-K	KIT, 24" SECTION (kit includes items 1, 2, 3, 4, 5, & 6)	1



## Spill Guard



ITEM	PART #	DESCRIPTION						QTY
1	P60276-K	7' SPILL GUARD KIT, w/ HW for UPTE-84						1
	P60270-K	8' SPILL GUARD KIT, w/ HW for UPTE-96						1
	P60271-K	9' SPILL GUARD, KIT, w/ HW for UPTE/XT-108						1
2	P60272-K	10' SPILL GUARD, KIT, w/ HW for UPTE/XT-120						1
3	P60272-L	10' SPILL GUARD, LEFT ONLY						1
4	P60272-R	10' SPILL GUARD, RIGHT ONLY						1
2	P60273-K	11' SPILL GUARD, KIT, w/ HW for UPTE/XT-132						1
3	P60273-L	11' SPILL GUARD, LEFT ONLY						1
4	P60273-R	11' SPILL GUARD, RIGHT ONLY						1
ITEM	PART #	DESCRIPTION	UPTE-84 QTY	UPTE-96 QTY	UPTE/XT 108 QTY	UPTE/XT 120 QTY	UPTE/XT 132 QTY	
5	P60274	BOLT, HEX, 1/2 X 1", ZINC, GR8	6	6	8	12	12	
6	P60222	WASHER, FLAT, 1/2" SAE, ZINC	12	12	16	24	24	
7	P25045	NUT, LOCK, 1/2" ZINC, GR C	6	6	8	12	12	



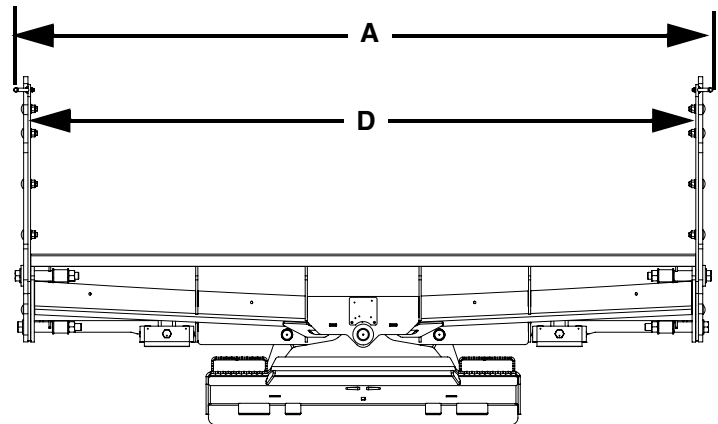
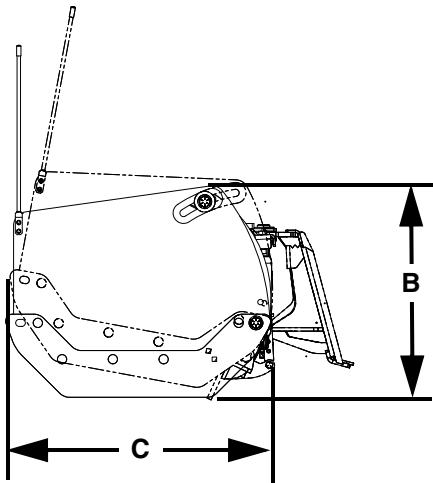


---

Specifications UPTE .....	.51
Specifications UPTE/XT .....	.52
Torque Specifications .....	.53

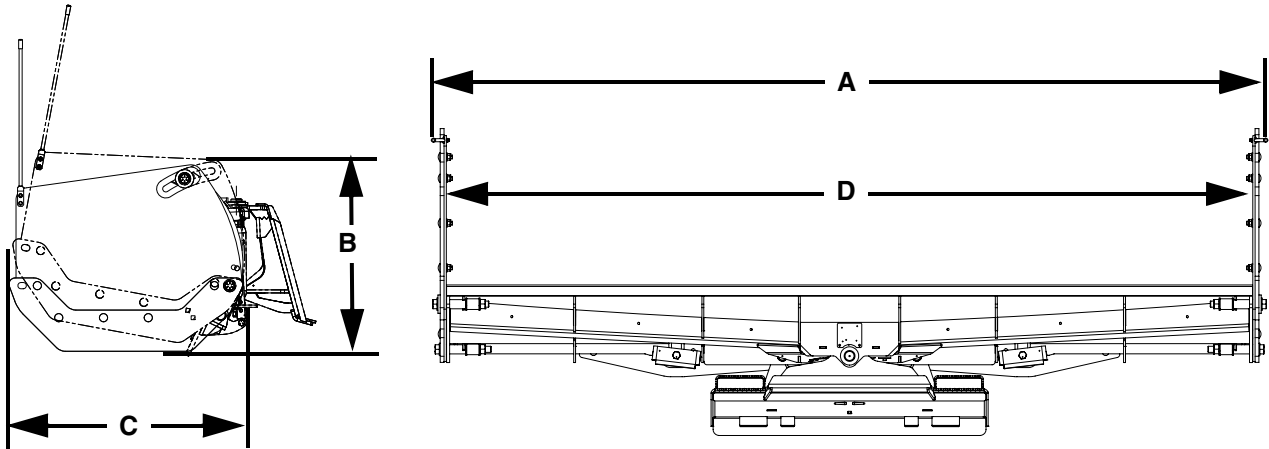


# Specifications UPTE



ULTRAPUSHER TE 6,000-10,000 LBS		
MODEL NUMBER	UPTE-84	UPTE-96
Overall Width (A)	86"	98"
Overall Height (B)	30.7"	30.7"
Overall Length (C)	36.1"	36.1"
Width Between Side Plates (D)	84"	96"
Weight	891 lbs.	933 lbs.
Moldboard Gauge	10 Ga.	
Side Plate Thickness	3/8"	
Side Plate Wear Shoes	5/8" x 37" AR400 Steel	
Trip Springs	4 EXT.	
Cutting Edge	1/2" x 6"	
Vertical Ribs	6	
Full Down Pressure	Yes	
Oscillation	Yes	
Universal Skid Steer Mount	Std.	
SoftTouch™ Cutting Edge	Opt.	
Carbide ActivEdge, AR400	Opt.	
ActivEdge, AR400	Opt.	
Spill Guard	Opt.	

## Specifications UPTE/XT



ULTRAPUSHER TE/XT 10,000-15,000 LBS			
MODEL NUMBER	UPTE/XT-108	UPTE/XT-120	UPTE/XT-132
Overall Width (A)	110"	122"	134"
Overall Height (B)	30.7"	30.7"	30.7"
Overall Length (C)	36.1"	36.1"	36.1"
Width Between Side Plates (D)	108"	120"	132"
Weight	1,039 lbs.	1,103 lbs.	1,145 lbs.
Moldboard Gauge	10 Ga.		
Side Plate Thickness	3/8"		
Side Plate Wear Shoes	5/8" x 37" AR400 Steel		
Trip Springs	4 EXT.		
Cutting Edge	1/2" x 6"		
Vertical Ribs	6	8	8
Full Down Pressure	Yes		
Oscillation	Yes		
Universal Skid Steer Mount	Std.		
SoftTouch™ Cutting Edge	Opt.		
Carbide ActivEdge, AR400	Opt.		
ActivEdge, AR400	Opt.		
Spill Guard	Opt.		

# Torque Specifications

## Standard Hardware And Lock Nuts

BOLT TYPE	SAE GRADE 5		SAE GRADE 8		LOCK NUTS			
	Plated or Unplated	Plated W / ZnCr	Plated or Unplated	Plated W / ZnCr	Plated or Unplated	Plated W / ZnCr	W / Grade 5 Bolt	W / Grade 8 Bolt
	Silver	Gold	Silver	Gold	Silver	Gold		
1/4	55 in / lb (6.2 N•m)	72 in / lb (8.1 N•m)	86 in / lb (9.7 N•m)	112 in / lb (12.6 N•m)	121 in / lb (13.6 N•m)	157 in / lb (17.7 N•m)	61 in / lb (6.9 N•m)	86 in / lb (9.8 N•m)
5/16	115 in / lb (13 N•m)	149 in / lb (17 N•m)	178 in / lb (20 N•m)	229 in / lb (26 N•m)	250 in / lb (28 N•m)	325 in / lb (37 N•m)	125 in / lb (14 N•m)	176 in / lb (20 N•m)
3/8	17 ft / lb (23 N•m)	22 ft / lb (30 N•m)	26 ft / lb (35 N•m)	34 ft / lb (46 N•m)	37 ft / lb (50 N•m)	48 ft / lb (65 N•m)	19 ft / lb (26 N•m)	26 ft / lb (35 N•m)
7/16	27 ft / lb (37 N•m)	35 ft / lb (47 N•m)	42 ft / lb (57 N•m)	54 ft / lb (73 N•m)	59 ft / lb (80 N•m)	77 ft / lb (104 N•m)	30 ft / lb (41 N•m)	42 ft / lb (57 N•m)
1/2	42 ft / lb (57 N•m)	54 ft / lb (73 N•m)	64 ft / lb (87 N•m)	83 ft / lb (113 N•m)	91 ft / lb (123 N•m)	117 ft / lb (159 N•m)	45 ft / lb (61 N•m)	64 ft / lb (88 N•m)
9/16	60 ft / lb (81 N•m)	77 ft / lb (104 N•m)	92 ft / lb (125 N•m)	120 ft / lb (163 N•m)	130 ft / lb (176 N•m)	169 ft / lb (229 N•m)	65 ft / lb (88 N•m)	92 ft / lb (125 N•m)
5/8	83 ft / lb (112 N•m)	107 ft / lb (145 N•m)	128 ft / lb (174 N•m)	165 ft / lb (224 N•m)	180 ft / lb (244 N•m)	233 ft / lb (316 N•m)	90 ft / lb (122 N•m)	127 ft / lb (172 N•m)
3/4	146 ft / lb (198 N•m)	189 ft / lb (256 N•m)	226 ft / lb (306 N•m)	293 ft / lb (397 N•m)	319 ft / lb (432 N•m)	413 ft / lb (560 N•m)	160 ft / lb (217 N•m)	226 ft / lb (306 N•m)
7/8	142 ft / lb (193 N•m)	183 ft / lb (248 N•m)	365 ft / lb (495 N•m)	473 ft / lb (641 N•m)	515 ft / lb (698 N•m)	667 ft / lb (904 N•m)	258 ft / lb (350 N•m)	364 ft / lb (494 N•m)
1	213 ft / lb (289 N•m)	275 ft / lb (373 N•m)	547 ft / lb (742 N•m)	708 ft / lb (960 N•m)	773 ft / lb (1048 N•m)	1000 ft / lb (1356 N•m)	386 ft / lb (523 N•m)	545 ft / lb (739 N•m)









15100 Business Parkway, Rosemount, MN 55068  
1-800-905-2265 / [snowwolfplows.com](http://snowwolfplows.com)