



Operation & Maintenance Manual



6,000 - 15,000 lb.

QuattroPlow™ Models QP & QPXT



REMEMBER: Register your product! No claims for warranty shall be considered unless your product registration card is completed online within 30 days of purchase. Go to: snowwolfplows.com/registration.

MANUFACTURER'S WARRANTY

Two-Year Limited Warranty

SNOWWOLF International, hereinafter referred to as SNOWWOLF, warrants new SNOWWOLF SNOW PLOWS at the time of delivery to the original purchaser, to be free from defects in material and workmanship when properly set up and operated in accordance with the recommendations set forth by SNOWWOLF.

SNOWWOLF'S liability for any defect with respect to accepted goods shall be limited to repairing the goods at a SNOWWOLF designated location or at an authorized dealer location, or replacing them as SNOWWOLF shall elect. The above shall be in accordance with SNOWWOLF warranty adjustment policies. SNOWWOLF'S obligation shall terminate twenty-four (24) months after the delivery of the goods to original purchaser including cutting edge breakage or wear. This warranty shall not apply to any machine or attachment which shall have been repaired or altered outside the SNOWWOLF factory or authorized SNOWWOLF dealership or in any way so as in SNOWWOLF'S judgment, to affect its stability or reliability, nor which has been subject to misuse, negligence or accident beyond the Company recommended machine rated capacity.

Warranty Claim

To submit a warranty claim, a return authorization from SNOWWOLF must be obtained. The failed part may then be returned. Tampering with the failed part may void the warranty. This warranty does not include freight or delivery charges incurred when returning machinery for servicing. Dealer mileage, service calls, and pickup/delivery charges are the customers' responsibility.

Exclusions of Warranty

Except as otherwise expressly stated herein, SNOWWOLF makes no representation or warranty of any kind, expressed or implied, AND MAKES NO WARRANTY OF MERCHANTABILITY IN RESPECT TO ITS MACHINERY AND/OR ATTACHMENTS ARE FIT FOR ANY PARTICULAR PURPOSE. SNOWWOLF shall not be liable for incidental or consequential damages for any breach of warranty, including but not limited to inconvenience, rental of replacement equipment, loss of profits or other commercial loss. Upon purchase, the buyer assumes all liability for all personal injury and property resulting from the handling, possession, or use of the goods by the buyer.

No agent, employee, or representative of SNOWWOLF has any authority to bind SNOWWOLF to any affirmation, representation or warranty concerning its machinery and/or attachments except as specifically set forth herein.

This warranty policy supersedes any previous documents.

No claims for warranty shall be considered unless warranty registration is sent to SNOWWOLF within 30 days of purchase!

Manufactured By:



15100 Business Parkway
Rosemount, MN 55068
www.snowwolfplows.com

Introduction	3
Owner Information	5
Serial Number Location	5
Attachment Identification, QP and QPXT Models	6
Safety	7
Safety Information	9
Safe Operation Needs A Qualified Operator	9
Importance of Safety	10
Operation	13
General Information	15
Pre-Operation Inspection	15
Attachment Inspection	16
Daily Inspection	16
Monthly Inspection	16
Attachment Installation	17
Entering The Operator’s Position	17
Leaving The Operator’s Position	17
Connecting Attachment To The Machine	17
Hydraulic Couplers	18
Checking QuattroPlow Operation	19
Operating The Attachment	20
Operation	20
Attachment Removal	21
Maintenance	23
Maintenance Safety	25
General Maintenance	26
QuattroPlow Maintenance	27
Lubrication	27
Cutting Edge Replacement	28
Cutting Edge Trip Spring Adjustment / Replacement	28
Wear Shoe Adjustment / Replacement (if equipped)	29
Side Wing Cutting Edge Replacement	29
Wing Cutting Edge Upgrade Kit Installation	30
Troubleshooting	31
Storage And Return To Service	32
Parts	33
Models QP102, QP114, QP126, QP138	36
Parts	36

Options (QP Models)	40
Side Wing (QP Models)	44
Hydraulics QP102, QP114, QP126, QP138	46
Hydraulic Hoses (QP Models)	46
Hydraulic Components (QP Models)	47
Trip Edge Generations (QP Models)	48
Decal Identification (QP Models)	49
Models QPXT126, QPXT138, QPXT150	50
Parts	50
Options (QPXT Models)	54
Side Wing (QPXT Models)	56
Hydraulics QPXT126, QPXT138, QPXT150	58
Hydraulic Hoses (QPXT Models)	58
Hydraulic Components (QPXT Models)	59
Decal Identification (QPXT Models)	60
Options (Model Specific)	61
Hydraulic Manifold AutoWing (QP and QPXT Models)	61
Hydraulic Manifold PowerWing, (QP and QPXT Models)	62
ActivEdge, AR400, 18" Sectional Blade (QP and QPXT Models)	63
ActivEdge, AR400, 24" Sectional Blade (QP and QPXT Models)	64
ActivEdge, Carbide, AR400, 18" Sectional Blade (QP and QPXT Models)	65
ActivEdge, Carbide, AR400, 24" Sectional Blade (QP and QPXT Models)	66
Spill Guard	67
Flex Frame	68
Specifications	69
Attachment Specifications (QP Models)	71
Dimensions (QP Models)	72
Attachment Specifications (QPXT Models)	73
Dimensions (QPXT Models)	74
Torque Specifications	75



Owner Information	5
Serial Number Location	5
Attachment Identification, QP and QPXT Models	6



Owner Information

Thank you for your decision to purchase a SnowWolf QuattroPlow. To ensure maximum performance of your equipment, it is mandatory that you thoroughly study the Operator's Manual and follow the recommendations. Proper operation and maintenance are essential to maximize equipment life and prevent personal injury.

Operate and maintain this equipment in a safe manner and in accordance with all applicable local, state, and federal codes, regulations and / or laws. Follow all on-product labeling and instructions.

Make sure that all personnel have read this Operator's Manual and thoroughly understand safe and correct operating, installation and maintenance procedures.

SnowWolf is continually working to improve its products. SnowWolf reserves the right to make any improvements or changes as deemed practical and possible without incurring any responsibility or obligation to make any changes or additions to equipment sold previously.

Although great care has been taken to ensure the accuracy of this publication, SnowWolf makes no warranty or guarantee of any kind, written or expressed, implied or otherwise with regard to the information contained within this manual. SnowWolf assumes no responsibility for any errors that may appear in this manual and shall not be liable under any circumstances for incidental, consequential or punitive damages in connection with, or arising from the use of this manual.

Keep this manual available for frequent reference. All new operators or owners must review the manual before using the equipment and annually thereafter. Contact your SnowWolf Attachments Dealer for assistance, information, or additional copies of the manual. Contact www.snowwolfplows.com or call 1-800-905-2265 for a complete list of dealers in your area.

Serial Number Location

Please record attachment information in the space provided for future reference.

Model Number: _____

Serial Number: _____

Dealer Name: _____

Dealer Number: _____

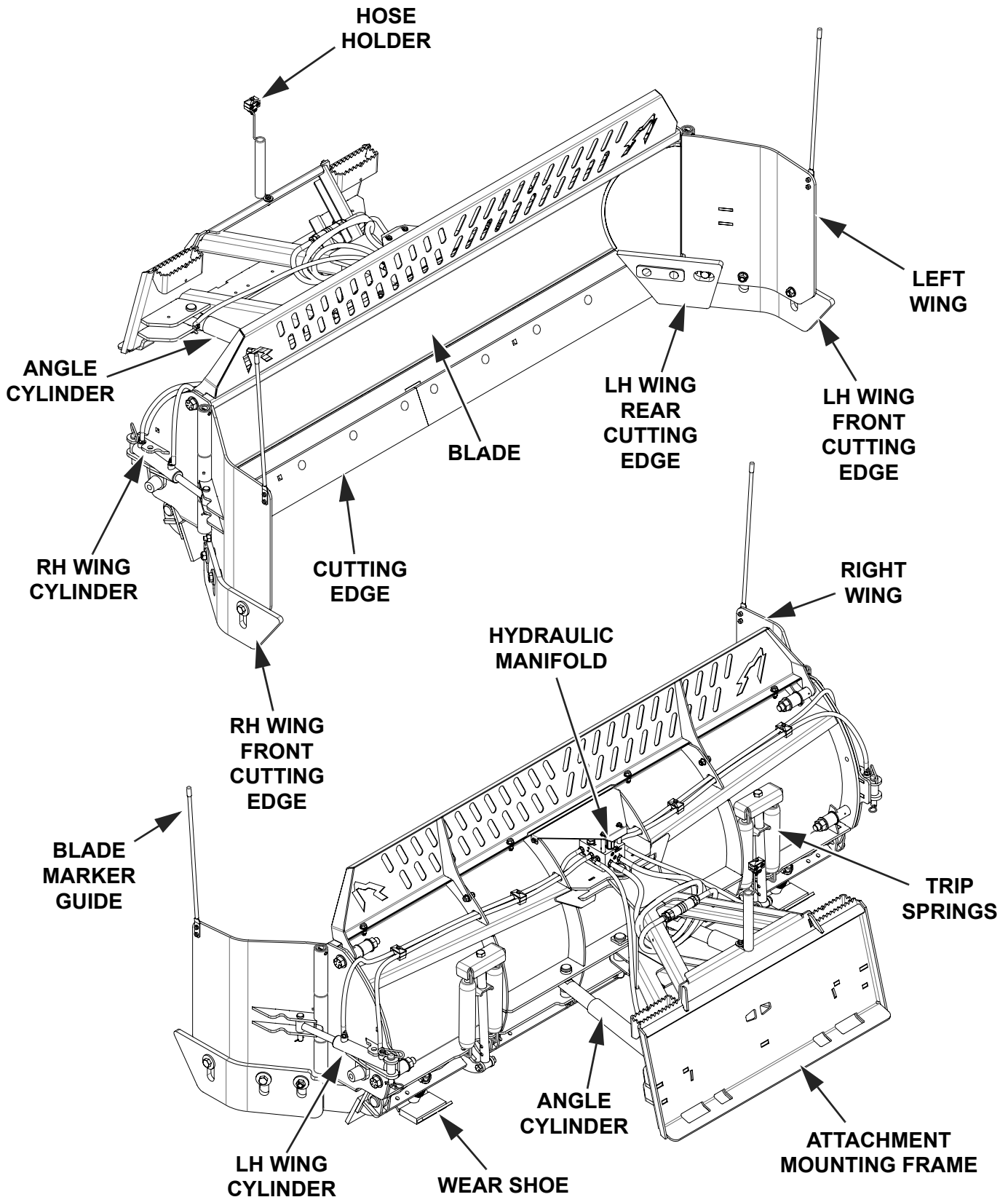
Date of Purchase: _____

Always use the serial number of the QuattroPlow when requesting service information or when ordering parts. Early or later models (identification made by serial number) may use different parts, or may require a different procedure in doing a specific service operation.

NOTE: This document and the information provided are the property of SnowWolf and may only be used as authorized by SnowWolf.

The serial number is located on the left side of the frame or on the rear of the QuattroPlow moldboard.

Attachment Identification, QP and QPXT Models





Safety Information	9
Safe Operation Needs A Qualified Operator	9
Importance of Safety	10



Safety Information



Safety Alert Symbol

This SAFETY ALERT SYMBOL identifies important safety messages on the equipment and in the owner's manual. When you see this symbol, be alert to the possibility of personal injury and carefully read the message that follows.



DANGER

The signal word DANGER on the machine and in the manuals indicates a hazardous situation which, if not avoided, will result in death or serious injury.



WARNING

The signal word WARNING on the machine and in the manuals indicates a potentially hazardous situation which, if not avoided, could result in death or serious injury.



CAUTION

The signal word CAUTION on the machine and in the manuals indicates a potentially hazardous situation which, if not avoided, may result in minor or moderate injury. It may also be used to alert against unsafe practices.



IMPORTANT

The signal word IMPORTANT identifies procedures which must be followed to avoid damage to the machine.

Safe Operation Needs A Qualified Operator



WARNING

AVOID SERIOUS INJURY OR DEATH

Operators must receive instructions before operating the machine. Untrained operators can cause serious injury or death.

For an operator to be qualified, he or she must not use drugs or alcoholic drinks which impair alertness or coordination while working. An operator who is taking prescription drugs must get medical advice to determine if he or she can safely operate a machine and the equipment.

Owner's Responsibility

Operate and maintain this machine in a safe manner and in accordance with all applicable local, state, and federal codes, regulations and/or laws; and in compliance with on-product labeling and this owner's manual instructions.

Make sure that all personnel have read this owner's manual, and thoroughly understand safe and correct installation, operation and maintenance procedures

Give operating instructions to the operators before allowing them to operate the machine, and at least annually thereafter.

Importance of Safety

Operating Safety

- Read and follow instructions in this manual and the machine's Operators Manual before operating.
- The QuattroPlow attachment is intended for use in snow removal. Use of this equipment in any other manner is considered to be contrary to the intended use of the attachment.
- Under no circumstances should young children be allowed to work with this equipment.
- This equipment is dangerous to persons unfamiliar with its operation.
- Check for overhead and / or underground lines before operating equipment (if applicable).
- In addition to the design and configuration of equipment, hazard control and accident prevention are dependent upon the awareness, concern, prudence and proper training of personnel involved in the operation, transport, maintenance and storage of equipment.
- Check that the attachment is securely fastened to the machine.
- Make sure all the machine controls are in the NEUTRAL before starting the machine.
- Operate the equipment only from the operator's position.
- Operate the equipment according to the Operator's Manual.
- When learning to operate the equipment, do it at a slow rate in an area clear of bystanders.
- DO NOT permit personnel to be in the work area when operating the equipment.
- The equipment must be used ONLY on approved machines.
- DO NOT modify the equipment in any way. Unauthorized modification may impair the function and / or safety and could affect the life of the equipment.
- DO NOT make any adjustments or repairs on the equipment while the machine is running.
- Keep shields and guards in place. Replace if damaged.
- DO NOT operate equipment in poor visibility conditions such as fog, darkness, or any conditions that limit clear visibility less than 300 feet (100 m) in front of and to the sides of the equipment.
- DO NOT operate in a work area that has not been inspected for foreign debris and obstacles.
- Remove any foreign objects and clearly mark any objects that cannot be removed.
- Wear safety glasses, gloves, hard hat, hearing protection and other protective clothing when operating or maintaining this equipment.

Importance of Safety Cont'd

Fire Prevention Safety

- All fuels, most lubricants and some coolant mixtures are flammable. Flammable fluids that are leaking or spilled onto hot surfaces or onto electrical components can cause a fire.

Transporting Safety

- Comply with state and local laws governing highway safety and movement of machinery on public roads.
- Check local laws for all highway lighting and marking requirements.
- Always yield to oncoming traffic and move to the side of the road so any following traffic may pass.
- Never allow riders on either machine or equipment.
- If transporting the attachment on a truck or trailer, make sure it is properly secured to the transport vehicle.

Hydraulic Safety

- Always disconnect hydraulic connections between the machine and the QuattroPlow before performing maintenance to the QuattroPlow.
- Always clean fluid spills. Do not use gasoline or diesel fuel for cleaning parts. Use commercial nonflammable solvents.
- Check hydraulic tubes, hoses and fittings for damage and leakage. Never use open flame or bare skin to check for leaks. Hydraulic tubes and hoses must be properly routed and have adequate support and secure clamps. Tighten or replace any parts that show leakage.

WARNING



Leaking fluids under pressure can enter the skin and cause serious injury or death. Immediate medical attention is required. Wear goggles. Use cardboard to check for leaks.





General Information 15
 Pre-Operation Inspection 15
Attachment Inspection 16
 Daily Inspection 16
 Monthly Inspection 16
Attachment Installation 17
 Entering The Operator’s Position 17
 Leaving The Operator’s Position 17
 Connecting Attachment To The Machine 17
 Hydraulic Couplers 18
 Checking QuattroPlow Operation 19
Operating The Attachment 20
 Operation 20
Attachment Removal 21



General Information

Pre-Operation Inspection

Before operating the QuattroPlow for the first time and each time thereafter, use the following list as a guideline during equipment inspection.

1. Use only a machine of adequate power and weight to operate the QuattroPlow.
2. Check the QuattroPlow and machine's quick tach mounts for damaged, loose or missing parts. Repair as needed before operation.
3. Lubricate the QuattroPlow, see Lubrication on page 27.
4. Check that the QuattroPlow is properly attached to the machine. Be sure retainers are used on the mounting pins.
5. Check that wear shoes (if equipped) are set at the same working depth.
6. Make sure that all guards and shields are in place, secured and functioning as designed.
7. Check oil level in machine's hydraulic reservoir.
8. Check that the hydraulic hoses and couplers are securely attached to the QuattroPlow and to the machine. Make sure hoses are routed and secured to avoid pinch points or strain during movement of the machine/attachment.
9. Check cutting blade for wear or damage.
10. Check hydraulic lines, connections and fittings for hydraulic oil leaks.

WARNING



Leaking fluids under pressure can enter the skin and cause serious injury or death. Immediate medical attention is required. Wear goggles. Use cardboard to check for leaks.

Attachment Inspection

Daily Inspection

NOTE: Inspect the attachment by performing a walk around daily before and after use. Use the following inspection checklist as a guideline.

Check the following items every 10 hours of operation:

- Verify that the QuattroPlow is properly connected to the machine.
- Check that all shields and guards are in place.
- Check for damaged or leaking hydraulic hoses or fittings. Replace if necessary.
- Check moldboard cutting edge for wear or damage. Replace if necessary.
- Check wing cutting edges for wear or damage. Replace if necessary.
- Check QP wing.
- Check that all cotter pins that retain pivot/ anchor pins are in place and not damaged or missing.
- Check the QuattroPlow to ensure that all components are secure and that all bolts and nuts are thoroughly tightened.
- Check the QuattroPlow mounting hardware for wear or damage. Inspect the pins and mount (on the attachment) for wear or damage. Repair or replace damaged parts if necessary.

Monthly Inspection

- Inspect the QuattroPlow for cracks, bends, or excessive wear.
- Check wear shoes (if equipped) for wear.
- Check that all bolts are tight.
- Check moldboard cutting edge and mounting plate for cracks or damage. Replace if necessary.
- Check the wing cutting edges for cracks or damage. Replace if necessary.
- Check hydraulic lines, connections and fittings for hydraulic oil leaks. Repair or replace damaged parts if necessary.
- Check for damaged or missing decals. Replace if necessary.
- Lubricate as required.



AVOID SERIOUS INJURY OR DEATH

Before servicing the attachment:

- **Always park on a flat level surface.**
- **Lower lift arms and place attachment flat on the ground.**
- **Place all controls in NEUTRAL.**
- **Engage the park brake.**
- **Wait for all moving parts to stop.**
- **Stop the engine and remove the key.**

SEE MACHINE'S OPERATOR'S MANUAL FOR ADDITIONAL INFORMATION.

Attachment Installation



IMPORTANT



See the machine's Operator's Manual for detailed information on operating the loader.

Entering The Operator's Position

Use the attachment safety treads, handles and steps (on the machine) to enter the operator's position.

When in the operator's position, lower safety seat bar, start the engine and release the parking brake.

Leaving The Operator's Position



WARNING

AVOID SERIOUS INJURY OR DEATH

Before leaving the operator's position:

- Always park on a flat level surface.
- Lower lift arms and place attachment flat on the ground.
- Place all controls in **NEUTRAL**.
- Engage the park brake.
- Stop the engine and remove the key.
- Wait for all moving parts to stop.

SEE MACHINE'S OPERATOR'S MANUAL FOR ADDITIONAL INFORMATION.

Park the machine / attachment on a flat level surface.

Place all controls in neutral, engage the park brake, stop the engine and wait for all moving parts to stop. Leave the operator's position.

Connecting Attachment To The Machine



WARNING



CRUSH HAZARD

- Before moving the machine, look in all directions and make sure no bystanders, especially small children are in the work area. Do not allow anyone between the machine and attachment when approaching the attachment for connecting.
- Keep fingers and hands out of pinch points when connecting and disconnecting attachment.

Before connecting to the attachment, inspect the machine's mounting plate. (See the machine's Operator's Manual for inspecting the mounting frame).

Enter the operator's position. See "Entering The Operator's Position" on page 17.

Lower the machine's lift arm and tilt the machine's mounting plate forward.

Drive the machine slowly forward until the top edge of the machine's mounting frame is completely under the mounting flange of the QuattroPlow mounting frame.

Slowly raise and tilt the machine's mounting plate back until the QuattroPlow is slightly off the ground and attachment mounting frame fully contacts the front of the machine's mounting plate.

Connecting Attachment To The Machine (Cont'd)

WARNING

AVOID INJURY OR DEATH

Always shut off the machine's engine and apply the parking brake before exiting the machine.

Stop the engine and engage the parking brake.

Leave the operator's position. See "Leaving The Operator's Position" on page 17.

Engage machine's locking levers / wedges to securely fasten the attachment to the machine's mounting frame. (See the machine's Operation Manual for the correct procedure.)

Visually inspect that the wedge pins are securely fastened into the attachment mounting frame.

WARNING

AVOID SERIOUS INJURY OR DEATH

The locking pins / wedges must extend through the holes in the attachment mounting frame. Failure to secure locking pins / wedges can allow attachment to come off.

SEE MACHINE'S OPERATOR'S MANUAL FOR ADDITIONAL INFORMATION.

Engage machine's locking levers / wedges (See the machine's Operator's Manual for detailed information).

Hydraulic Couplers



IMPORTANT

- Thoroughly clean the quick couplers before making connections. Dirt can quickly damage the hydraulic system.



WARNING

AVOID BURNS

Hydraulic fluid, fluid tubes, fittings and quick couplers can get hot when running the machine and attachments. Be careful when connecting and disconnecting quick couplers.

Connecting Hydraulic Couplers:

Remove any dirt or debris from the surface of both the male and female couplers, and from the outside diameter of the male coupler. Visually check the couplers for corroding, cracking, damage, or excessive wear. If any of these conditions exist, replace the coupler(s).

NOTE: The QuattroPlow is supplied with flush face couplers.

NOTE: DO NOT attach hoses to high flow lines on a machine equipped with the High Flow Option.

NOTE: DO NOT hammer on or heat up couplers to connect or disconnect. Doing so will damage couplers resulting in leaks.

Hydraulic Couplers (Cont'd)

Figure 1



Install the QuattroPlow male coupler (Item 1) [Figure 1] into the female coupler. Pull on the coupler connection to verify that the male and female couplers are securely fastened.

Install the QuattroPlow female coupler (Item 2) [Figure 1] onto the male coupler. Pull on the coupler connection to verify that the male and female couplers are securely fastened.

Checking QuattroPlow Operation

NOTE: After installing the QuattroPlow, test all functions before operating the QuattroPlow in the work area.

WARNING

AVOID INJURY OR DEATH

- Never start the machine from outside the cab.
- Never operate the machine if any safety device is damaged, disconnected or missing.
- Never exit the machine with the engine running.



IMPORTANT

It is the operator's responsibility to know which machine control operates each function of the attachment prior to operating the attachment in the work area.

Engage the machine's auxiliary hydraulics. (See the machine's Operation Manual for correct procedure).

Raise the engine RPM.

Check the controls of the QuattroPlow for proper operation.

Exit the machine. (See "Leaving The Operator's Position" on page 17.)

Adjust the wear shoes (if equipped) to desired height. (See "Wear Shoe Adjustment / Replacement (if equipped)" on page 29.)

NOTE: Wear shoes (if equipped) must be set to the same height.

Move the machine and QuattroPlow to the work area.

Operating The Attachment

Operation

 **WARNING****AVOID INJURY OR DEATH**

While operating the machine:

- Always keep seat belt fastened.
- Safety seat bar lowered (if equipped)

Always keep your feet on the pedals or footrests and hands on the controls.

Adjust wear shoes (if equipped) to desired height. (See “Wear Shoe Adjustment / Replacement (if equipped)” on page 29.)

Enter the machine. (See “Entering The Operator’s Position” on page 17.)

Start the engine and release the parking brake.

Engage the machine’s auxiliary hydraulics. (See the machine’s Operation Manual for correct procedure.)

Raise the QuattroPlow slightly off the ground.

Set the desired left/right blade angle and up/down tilt.

Regulate the scraping ability of the QuattroPlow by increasing or decreasing the down pressure applied via the tilt cylinders. The angle of the QuattroPlow can be changed at any time by using the auxiliary circuit.

NOTE: Always be sure the A-frame of your QuattroPlow is level (parallel) with the ground when plowing, to insure proper cutting edge wear.

NOTE: The machine speed is determined by the depth and density of the material being moved.

NOTE: On extremely uneven ground, raise the boom arms slightly, lower the QuattroPlow to the ground using the tilt cylinders, then put the boom arms in the float position (if machine is equipped) to follow the contours of the ground.

 **WARNING****AVOID SERIOUS INJURY OR DEATH**

Always be aware of overhead obstacles or power lines when stacking snow.

Attachment Removal

NOTE: Put the QuattroPlow on planks or blocks before removing it from the machine to prevent it from settling or sinking in soft / wet ground.

Park the machine and attachment on a flat level surface.

Lower the lift arms and put the QuattroPlow flat on the ground.

Stop the engine and engage the parking brake.

Relieve auxiliary hydraulic pressure. (See the machine's Operator's Manual for correct procedure.)

Leave the operator's position. (See "Leaving The Operator's Position" on page 17.)

Disconnect the auxiliary hydraulic hoses. **(See "Hydraulic Couplers" on page 18.)**

Disengage the attachment locking levers / wedges. (See the machine's Operator's Manual for correct procedure.)

WARNING

AVOID BURNS

Hydraulic fluid, tubes, fittings and quick couplers can get hot during operation. Be careful when connecting and disconnecting hydraulic hoses.

Enter the machine. (See "Entering The Operator's Position" on page 17.)

Start the engine and release the parking brake.

Engage the machine's auxiliary hydraulics. (See the machine's Operation Manual for correct procedure.)

Slowly tilt the machine's mounting plate forward until the attachment mounting frame is free from the machine's mounting plate.

Drive the machine slowly backward, away from the attachment.





Maintenance Safety	25
General Maintenance	26
QuattroPlow Maintenance	27
Lubrication	27
Cutting Edge Replacement	28
Cutting Edge Trip Spring Adjustment / Replacement	28
Wear Shoe Adjustment / Replacement (if equipped)	29
Side Wing Cutting Edge Replacement	29
Wing Cutting Edge Upgrade Kit Installation	30
Troubleshooting	31
Storage And Return To Service	32



Maintenance Safety

WARNING

AVOID SERIOUS INJURY OR DEATH

Never operate the machine in a closed building. Proper ventilation is required when operating the machine under all circumstances.

WARNING

AVOID SERIOUS INJURY OR DEATH

Stop the engine, release auxiliary hydraulic pressure and disconnect the auxiliary hydraulic hose quick couplers before performing maintenance on the QuattroPlow.

- Always keep the work area clean and dry.
- Always use personal protection devices such as eye, hand and hearing protection when performing any service or maintenance.
- A fire extinguisher and first aid kit should be readily accessible while performing maintenance on this machine.
- Always relieve hydraulic system pressure before disconnecting the QuattroPlow.
- Always disconnect hydraulic connections between the machine and the QuattroPlow before performing maintenance.
- Before working or doing maintenance on this machine, shut off the engine and remove the key. Make sure the machine's wheels are blocked.
- Never work under the machine or attachment unless the machine or equipment is blocked or supported securely.
- Disconnect the battery (both terminals) before welding on any part of the machine. Failure to do so may cause damage to electrical components.
- When working around batteries, remember that all of the exposed metal parts are "live". Never lay a metal object across the terminals because a spark, short circuit, explosion or personal injury may result.
- Battery posts, terminals and related accessories contain lead and lead compounds. **Wash hands after handling.**
- Never search for leaks with your hands. (See "Hydraulic Safety" on page 11.)
- When replacement parts are necessary, genuine factory replacement parts must be used to restore your equipment to original specifications. SnowWolf will not be responsible for injuries or damage caused by use of unapproved parts and / or accessories.
- When completing service or maintenance on this machine, make sure all shields and guards are installed before placing the machine into service.

General Maintenance

 **WARNING**

AVOID SERIOUS INJURY OR DEATH

Before operating or servicing system: Read and understand the machine's owners manual. Follow the warnings and instructions in the manual when making repairs, adjustments, or servicing. Check for correct function after adjustments, repairs or service. Untrained operators and failure to follow instructions can cause injury or death.

To ensure efficient operation, you should inspect, lubricate, and make necessary adjustments and repairs at regular intervals. Keep good maintenance records and adequately clean your machine after each use.

Proper lubrication is important. Follow all lubrication instructions and schedules included in this section.

Daily Inspection:

- All components and hardware to ensure equipment is secure and thoroughly tightened.
- Frame and all welds for cracks or damage.
- Wear shoes (if equipped) for wear or damage.
- Mounting frame for proper operation and signs of damage or unusual wear.
- Safety signs and reflectors for damage. Replace any missing or damaged decals.
- Cutting edge for wear or damage.
- Hydraulic hoses and fittings for wear, damage or leaks.

NOTE: Repair or replace any damaged parts.

NOTE: After initial use, or repair/replacement of damaged parts, it is important to check the repaired or replaced parts for proper bolt torque, operation and leaks.

QuattroPlow Maintenance

WARNING

AVOID SERIOUS INJURY OR DEATH

Always turn off and lockout power before servicing the attachment.

WARNING

AVOID SERIOUS INJURY OR DEATH

Always disconnect hydraulic connections between the attachment and the machine before performing any type of maintenance to the QuattroPlow.

WARNING

AVOID SERIOUS INJURY OR DEATH

Securely block up the attachment before working underneath.

Lubrication

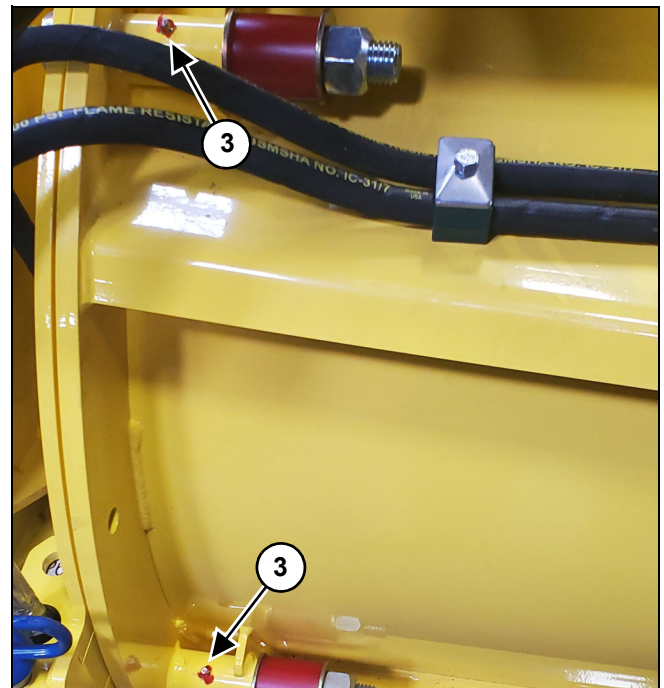
Figure 1



Apply 3-4 pumps of grease to the QP wing hinge zerk (Item 1) [Figure 1] both sides **every 40 hours** of operation.

Apply 1-2 pumps of grease to the wing cylinder ends (Item 2) [Figure 1] both sides **every 40 hours** of operation.

Figure 2



Apply 2 pumps of grease to the zerks (Item 3) [Figure 2] both sides **every 40 hours** of operation.

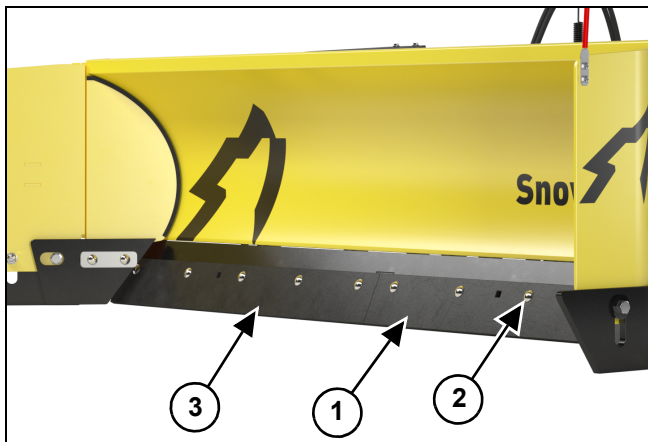
Cutting Edge Replacement

NOTE: Replace or flip the bolt-on cutting edge when it wears within 1/2" - 3/4" of the bolt head securing it to the trip-edge. Replace only with genuine SnowWolf cutting edge and hardware.

1. Park the machine on a level surface with the QuattroPlow properly attached.
2. Lower the QuattroPlow approximately three to four inches off the ground.
3. Engage the parking brake.
4. Shut off the machine's engine, remove the ignition key (if equipped), wait for all moving parts to come to a stop and relieve all pressure in the hydraulic lines.
5. Block and/or support the QuattroPlow with proper lifting device capable of sufficiently supporting the unit's weight.
6. Disconnect hydraulic connections between the attachment and the machine.

NOTE: The cutting edge and hardware quantity will vary depending upon the QuattroPlow model.

Figure 3



7. Block the cutting edge (Item 1) [Figure 3], remove the fasteners (Item 2) and remove the cutting edge.

NOTE: Be cautious as the cutting edge and hardware may be sharp.

8. Repeat procedure for the cutting edge (Item 3) [Figure 3].
9. Properly dispose of the old cutting edge's and install the new cutting edge's by reversing the steps listed here.

NOTE: Replace worn or damaged fasteners as needed.

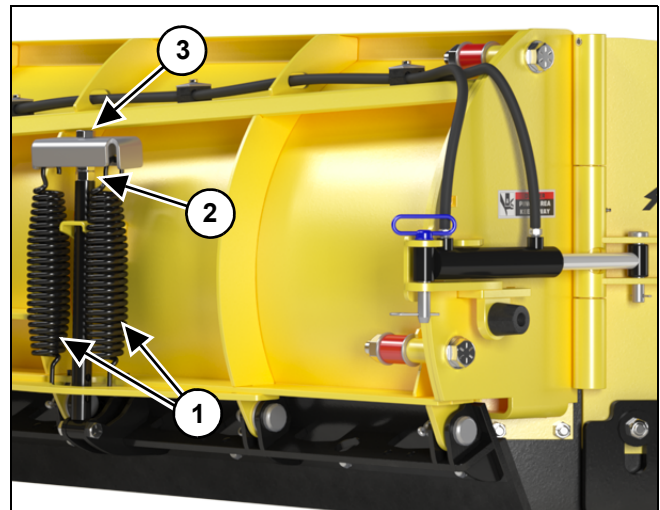
Cutting Edge Trip Spring Adjustment / Replacement



IMPORTANT

Set trip springs after first use, then twice per year thereafter.

Figure 4



Cutting edge trip springs (Item 1) [Figure 4] are adjusted by loosening the jam nut (Item 2) located on the rod between each spring, then tightening or loosening the threaded bolt (Item 3).

Springs are adjusted correctly when there is a .001" gap between the coils. Tighten jam nut.

NOTE: Use grease or "Anti Seize" on the rod and jam nut to prevent rusting.

NOTE: Adjust trip springs evenly on both sides.

Wear Shoe Adjustment / Replacement (if equipped)

Place blocks under the QuattroPLOW (both sides) to hold the wear shoe off the ground.

Remove the retaining pin, spacers and remove the wear shoe.

Install or remove spacers for desired blade clearance when installing wear shoe. Install retaining pin.

Repeat procedures on the opposite side.

NOTE: Wear shoes must be set to the same height.

Side Wing Cutting Edge Replacement



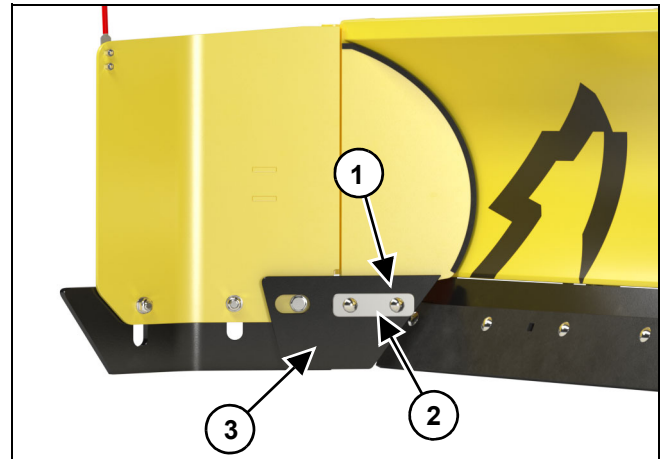
WARNING

AVOID SERIOUS INJURY OR DEATH

Securely block up the attachment before working underneath. Be cautious as the cutting edge and hardware may be sharp.

Place blocks under the QuattroPLOW (both sides) to hold the side wing cutting edges off the ground.

Figure 5

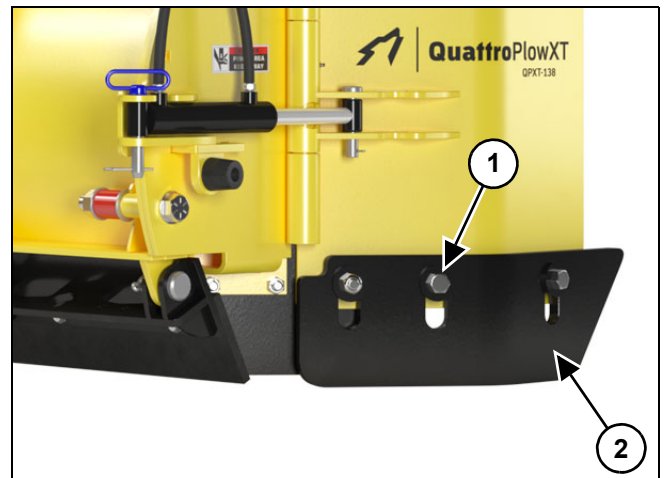


Remove the two nuts and bolts (Item 1) [Figure 5], hold down strip (2) and inner cutting edge (Item 3).

Install new cutting edge, hold down strip, nuts and bolts. Tighten hardware.

Repeat procedures on the opposite side.

Figure 6



Remove the three bolts (Item 1) [Figure 6] washers, bushings, nuts and cutting edge (Item 2).

Install new cutting edge, bolts, washers, bushings and nuts. Tighten hardware.

Repeat procedures on the opposite side.

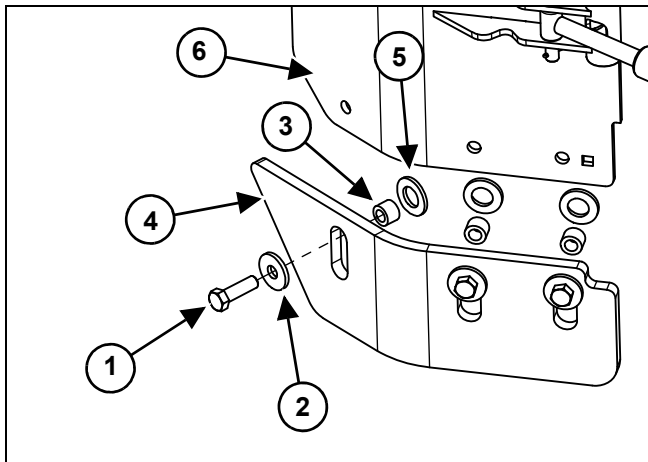
Wing Cutting Edge Upgrade Kit Installation

WARNING

AVOID SERIOUS INJURY OR DEATH

Securely block up the attachment before working underneath.

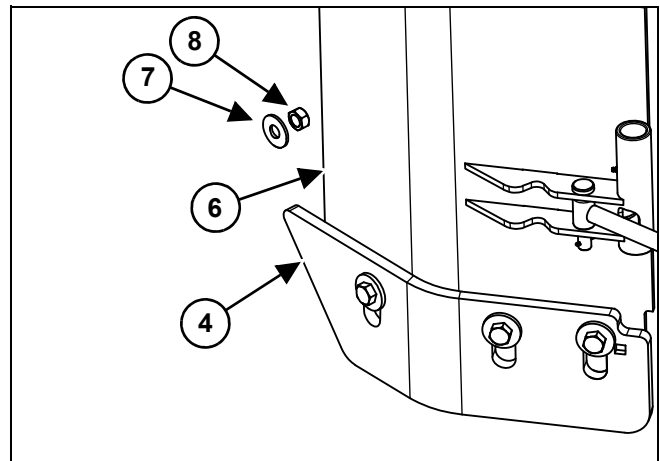
Figure 7



Install the three bolts (Item 1), three black washers (Item 2), and three bushings (Item 3) into the cutting edge (Item 4) **[Figure 7]**.

Install the three washers (Item 5) between the cutting edge and the wing (Item 6) **[Figure 7]**.

Figure 8



Install the cutting edge (Item 4) onto the wing (Item 6) **[Figure 8]**. Secure the cutting edge to the wing with three washers (Item 7) and three nuts (Item 8).

Repeat procedures on the opposite side.

Troubleshooting

PROBLEM	CAUSE	SOLUTION
QuattroPlow leaving snow behind.	Cutting edge worn or damaged.	Replace main cutting edge / wing cutting edges.
	Blade tilted too high.	Adjust machines lift and tilt controls.
	Wear shoes out of adjustment.	Raise or lower wear shoes as needed.
QuattroPlow does not rotate.	No hydraulic flow.	Check quick coupler connections. Engage auxiliary hydraulics.
	Plugged or kinked hose.	Replace hose.
	Hydraulic fluid low.	Check machine hydraulic oil level.
QuattroPlow tilt/rotate functions inconsistent.	Hydraulic fluid low.	Check machine hydraulic oil level.
	Faulty angle cylinder.	Replace cylinder.
QuattroPlow wings won't function on older machine.	Lack of pressure to operate the wing function.	Contact SnowWolf on guidance for valve adjustment.
QuattroPlow wings drift slowly while pushing or back dragging.	Wing Relief Pressure too low on Auto wing manifold.	Contact SnowWolf on guidance for valve adjustment.
QuattroPlow wing will not move or moves slow.	Wing hinge pin seized.	Lubricate and free wing hinge pin.
	Faulty wing cylinder.	Replace wing cylinder.

Storage And Return To Service

Storage

After the seasons use or when the QuattroPlow will not be in use for a period of time, perform the following steps.

- Thoroughly wash the QuattroPlow.
- Make sure all covers, guards and shields are installed.
- Inspect all components and hardware to ensure everything is secure and thoroughly tightened.
- Inspect the frame and all welds for cracks or damage.
- Apply a light coat of grease to the cylinder rods and pivot pins to prevent rust.
- Lubricate the power wing hinges or QP wing hinges.
- Lubricate wing mount bushings.
- Inspect the attachment mounting frame for wear or damage.
- Check that all decals and/or reflectors are in good condition and legible. Replace any damaged or missing decals.
- Cap all loose hose ends.
- Place the QuattroPlow in a dry protected shelter.

NOTE: Replace or repair any damaged parts.

Return to Service

After the QuattroPlow has been in storage, it is necessary to follow a list of items to return the QuattroPlow to service.

- Make sure all covers, guards and shields are installed.
- Inspect all components and hardware to ensure everything is secure and thoroughly tightened.
- Inspect the decals and reflectors for missing or damage.
- Install and operate the QuattroPlow and check for correct function.
- Check for leaks. Clean and repair as needed.

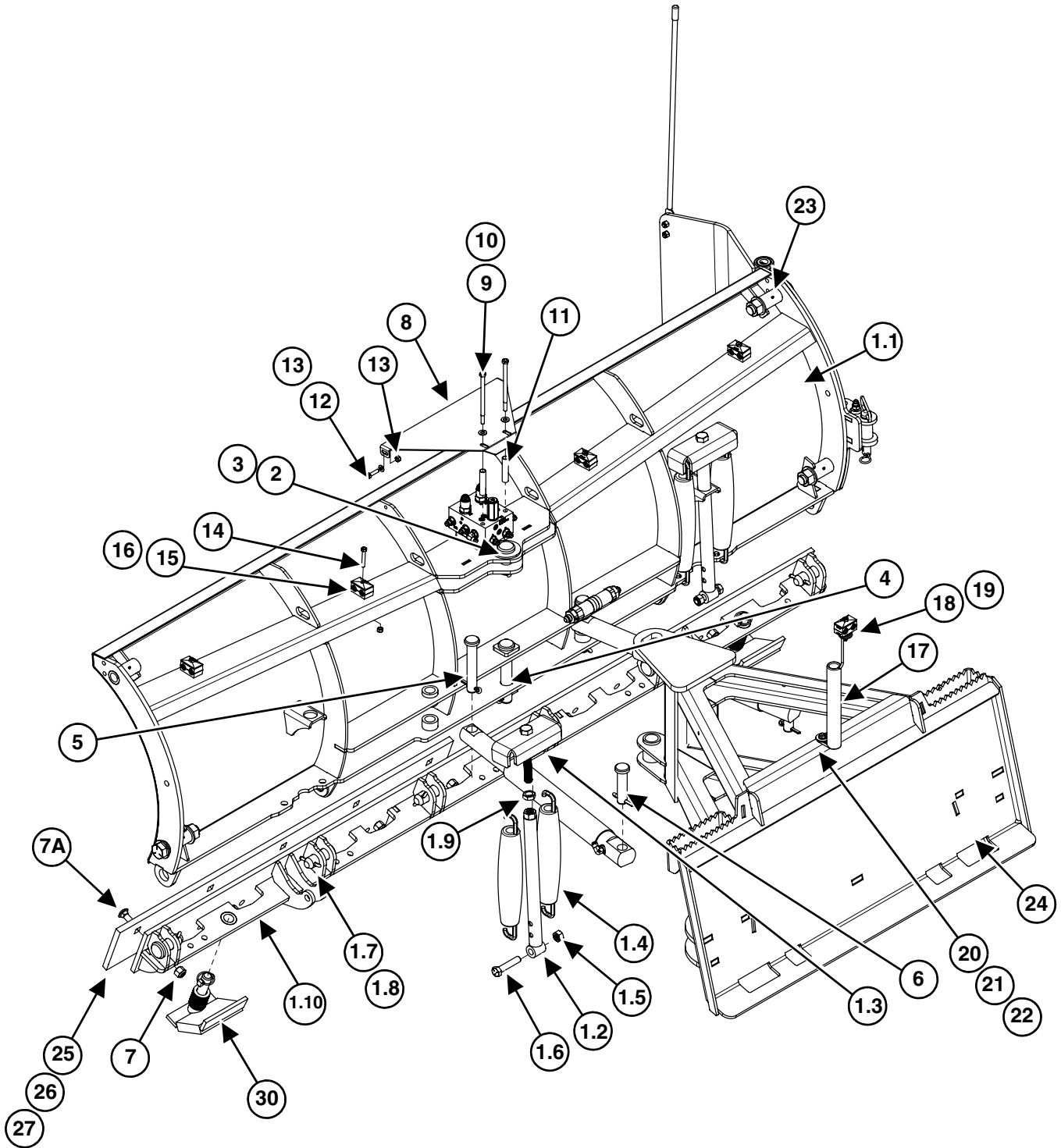
Models QP102, QP114, QP126, QP138	36
Parts	36
Options (QP Models)	40
Side Wing (QP Models)	44
Hydraulics QP102, QP114, QP126, QP138	46
Hydraulic Hoses (QP Models)	46
Hydraulic Components (QP Models)	47
Trip Edge Generations (QP Models)	48
Decal Identification (QP Models)	49
Models QPXT126, QPXT138, QPXT150	50
Parts	50
Options (QPXT Models)	54
Side Wing (QPXT Models)	56
Hydraulics QPXT126, QPXT138, QPXT150	58
Hydraulic Hoses (QPXT Models)	58
Hydraulic Components (QPXT Models)	59
Decal Identification (QPXT Models)	60
Options (Model Specific)	61
Hydraulic Manifold AutoWing (QP and QPXT Models)	61
Hydraulic Manifold PowerWing, (QP and QPXT Models)	62
ActivEdge, AR400, 18" Sectional Blade (QP and QPXT Models)	63
ActivEdge, AR400, 24" Sectional Blade (QP and QPXT Models)	64
ActivEdge, Carbide, AR400, 18" Sectional Blade (QP and QPXT Models)	65
ActivEdge, Carbide, AR400, 24" Sectional Blade (QP and QPXT Models)	66
Spill Guard	67
Flex Frame	68



This page left intentionally blank

Models QP102, QP114, QP126, QP138

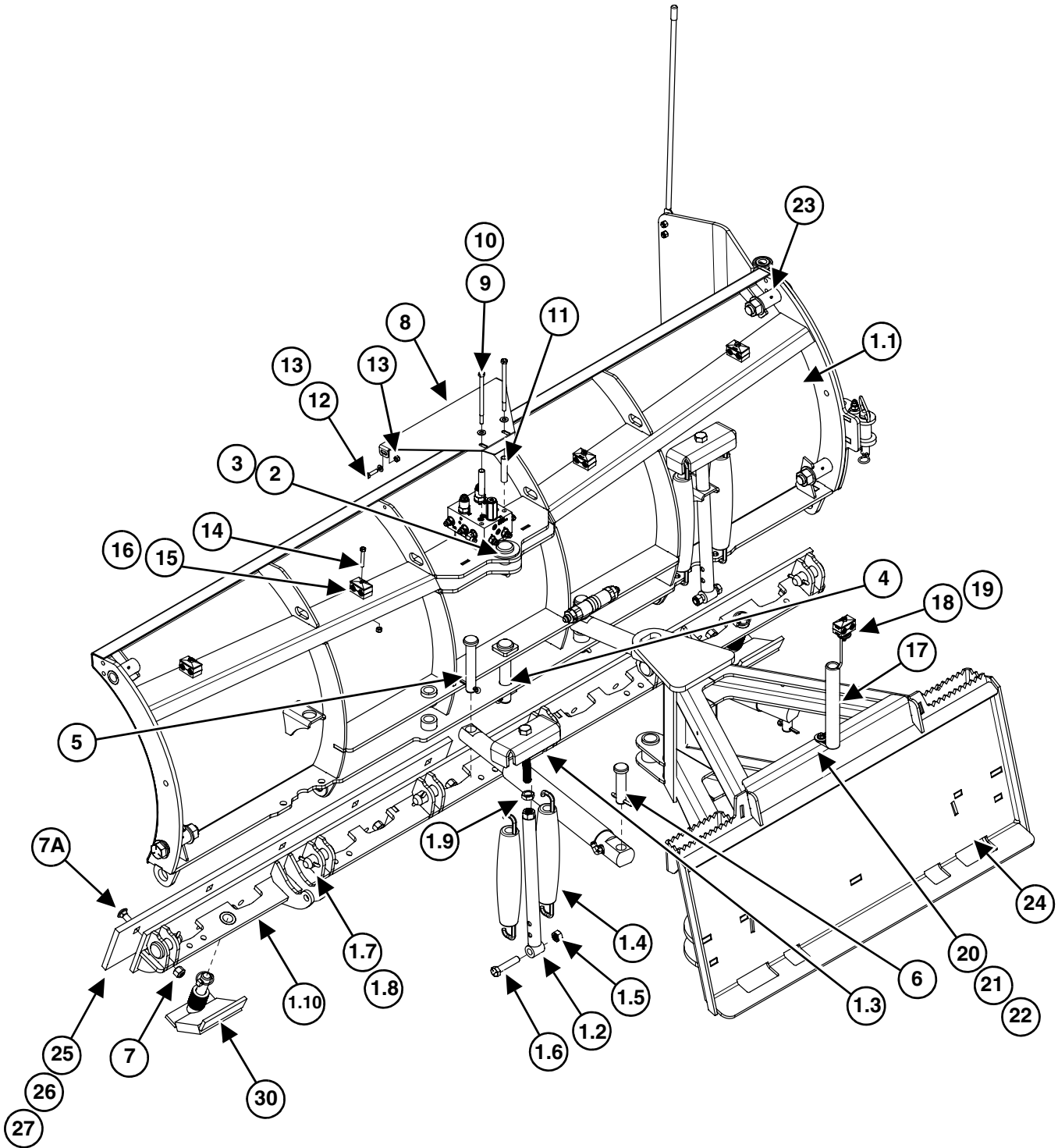
Parts



ITEM	PART #	DESCRIPTION	QP-102 QTY	QP-114 QTY	QP-126 QTY	QP-138 QTY
1	P40084	BLADE ASSEMBLY, QP-102	1	0	0	0
	P40096	BLADE ASSEMBLY, QP-114	0	1	0	0
	P40108XT	BLADE ASSEMBLY, QP-126	0	0	1	0
	P40120XT	BLADE ASSEMBLY, QP-138	0	0	0	1
1.1	P40015	BLADE WELDMENT ONLY, (NO SPRINGS OR TRIP EDGE)	1	0	0	0
	P40016	BLADE WELDMENT ONLY, (NO SPRINGS OR TRIP EDGE)	0	1	0	0
	P40017XT	BLADE WELDMENT ONLY, (NO SPRINGS OR TRIP EDGE)	0	0	1	0
	P40018XT	BLADE WELDMENT ONLY, (NO SPRINGS OR TRIP EDGE)	0	0	0	1
1.2	P40026	SPRING ADJUSTMENT ROD ASM	2	2	2	2
1.3	P40009-B	SPRING ADJUSTMENT ASM	2	2	2	2
1.4	P40010B	SPRING, TRIP, 6'-10' NEW STYLE	4	4	4	4
1.5	P40012	NUT, LOCK, 5/8-11, GR C	2	2	2	2
1.6	P40013	BOLT, HEX, 5/8-11 x 3, YELLOW ZINC, GRAD	2	2	2	2
1.7	P40006	PIN, UPPER PIVOT/TRIP EDGE 1-3/16" x 3"	6	6	6	8
1.8	P40007	PIN, COTTER, 1/4" x 2"	6	6	6	8
1.9	P60242	NUT, JAM, 3/4-10	2	2	2	2
1.10	P40002-L	7' TRIP EDGE WELDMENT, GEN 5	1	0	0	0
	P40002-M	8' TRIP EDGE WELDMENT, GEN 5	0	1	0	0
	P40002-N	9' TRIP EDGE WELDMENT, GEN 5	0	0	1	0
	P40002-O	10' TRIP EDGE WELDMENT, GEN 5	0	0	0	1
2	P40006	PIN, UPPER PIVOT/TRIP EDGE 1-3/16" x 3"	1	1	1	1
3	P40007	PIN, COTTER, 1/4" x 2"	6	6	6	6
4	P50003	PIN, LOWER PIVOT 1-1/8" x 6-3/4"	1	1	1	1
5	P50004	PIN, RAM ANCHOR (BLADE END) 1" x 6"	2	2	2	2
6	P50005	PIN, RAM ANCHOR (FRAME END) 1" x 4"	2	2	2	2
7	P60030	NUT, HEX, NYLOCK, 5/8-11	9	10	12	13
7A	P60010	BOLT, CARRIAGE 5/8-11 x 2" ZINC, GR 5	9	10	12	13
8	P60071	MANIFOLD SHROUD	1	1	1	1
9	P60087	BOLT, HEX, 3/8" x 6"	2	2	2	2
10	P60088	WASHER, FLAT, 3/8"	3	3	3	3
11	P60089	MANIFOLD SHROUD BOLT SPACER	2	2	2	2

Models QP102, QP114, QP126, QP138 (Cont'd)

Parts (Cont'd)



ITEM	PART #	DESCRIPTION	QP-102 QTY	QP-114 QTY	QP-126 QTY	QP-138 QTY
12	P60092	WASHER, FLAT, 5/16"	3	3	3	3
13	P60214	BOLT, HEX, 5/16-18 x 1-1/4", GR 5	2	2	2	2
14	P60215	BOLT, CARRIAGE, 5/16 x 2"GR 5	4	4	4	6
15	P60159	HOSE CLAMP	5	5	5	7
16	P60160	PLATE, HOSE CLAMP	5	5	5	7
17	P60084	SPRING, HOSE HOLDER	1	1	1	1
18	P60090	NUT, HEX, NYLOCK, 5/16"-18	7	7	7	9
19	P60094	BOLT, HEX, 5/16-18 x 2-1/2, GR 5	1	1	1	1
20	P60209	WASHER, FLAT, 1/2" USS	3	3	3	3
21	P60210	BOLT, HEX, 3/8" x 1-1/4"	1	1	1	1
22	P60211	NUT, HEX, NYLOCK, 3/8", GR 8	3	3	3	3
23	P25562	GREASE ZERK, 3/16" POUND IN	4	4	4	4

For Items above 23: See "Options (QP Models)" on page 40.

For hydraulic hoses: See "Hydraulic Hoses (QP Models)" on page 46.

For hydraulic components: See "Hydraulic Components (QP Models)" on page 47.

Options (QP Models)

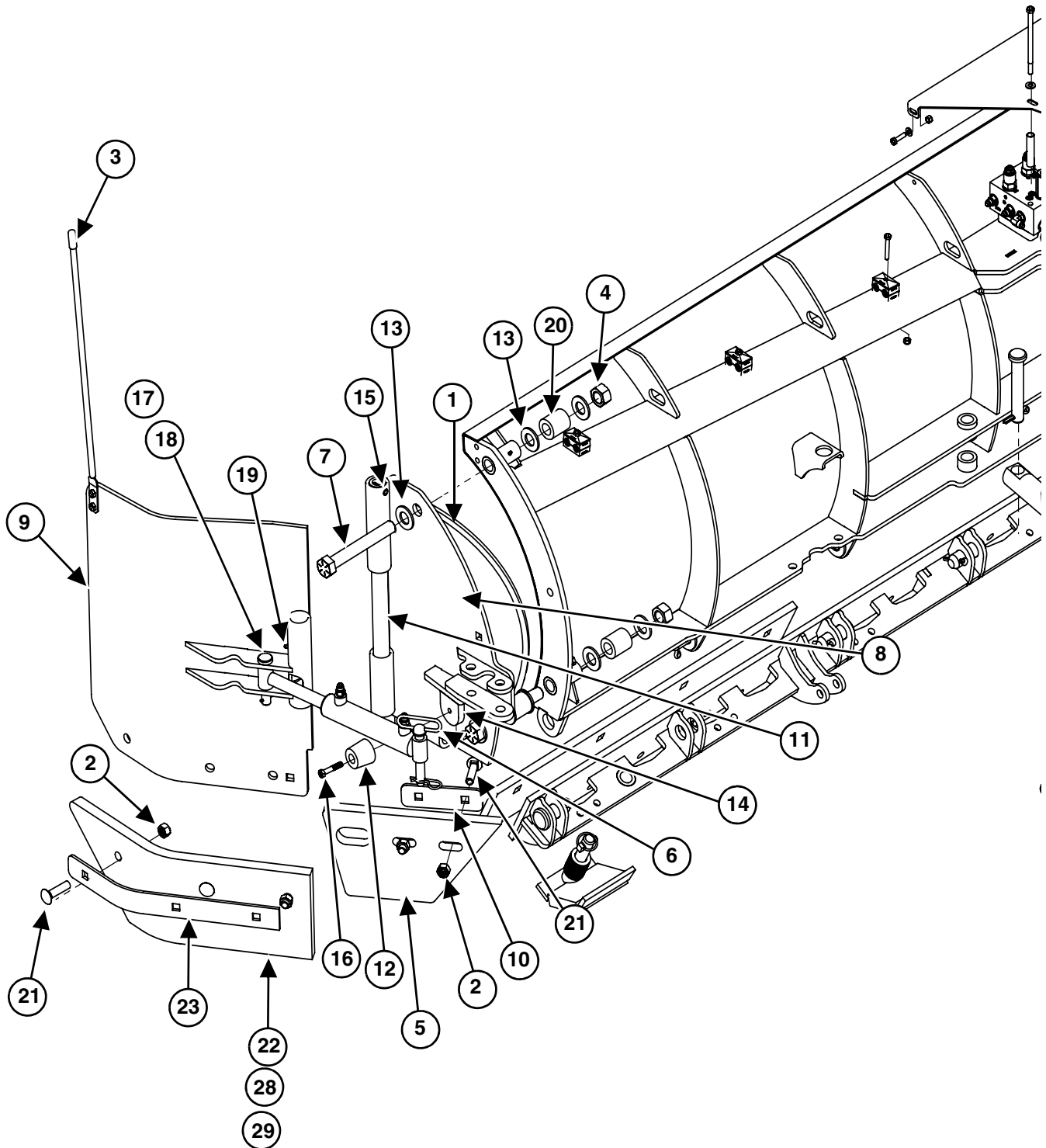
ITEM	PART #	DESCRIPTION	QP-102 QTY	QP-114 QTY	QP-126 QTY	QP-138 QTY
	FRAME (OPTION)					
24	P50020	FLEX FRAME, ASSY, SEE PAGE 68	1	1	1	1
	P50031	THREE-POINT FRAME	1	1	1	1
	P60000-1	A-FRAME	1	1	1	1
	MAIN EDGE - (See Trip Edges on page 48)					
	Steel Options					
25	P50011-C	CENTER PUNCH CUTTING EDGE KIT, 7', w/ HW (GEN 1, 2 OR 3 TRIP EDGE)	1	0	0	0
	P50011-E	CENTER PUNCH CUTTING EDGE KIT, 8', w/ HW (GEN 1, 2 OR 3 TRIP EDGE)	0	1	0	0
	P50011-G	CENTER PUNCH CUTTING EDGE KIT, 9', w/ HW (GEN 1, 2 OR 3 TRIP EDGE)	0	0	1	0
	P50011-H	CENTER PUNCH CUTTING EDGE KIT, 10', w/ HW (GEN 1, 2 OR 3 TRIP EDGE)	0	0	0	1
26	P50011-L	TOP PUNCH CUTTING EDGE KIT, 7', w/ HW (GEN 4 OR 5 TRIP EDGE)	1	0	0	0
	P50011-M	TOP PUNCH CUTTING EDGE KIT, 8', w/ HW (GEN 4 OR 5 TRIP EDGE)	0	1	0	0
	P50011-N	TOP PUNCH CUTTING EDGE KIT, 9', w/ HW (GEN 4 OR 5 TRIP EDGE)	0	0	1	0
	P50011-O	TOP PUNCH CUTTING EDGE KIT, 10', w/ HW (GEN 4 OR 5 TRIP EDGE)	0	0	0	1
	SoftTouch Options - (Works with any Trip Edge)					
27	P50012-C1	7' SOFTTOUCH CUTTING EDGE KIT w/ HW	1	0	0	0
	P50012-E1	8' SOFTTOUCH CUTTING EDGE KIT w/ HW	0	1	0	0
	P50012-G1	9' SOFTTOUCH CUTTING EDGE KIT w/ HW	0	0	1	0
	P50012-H1	10' SOFTTOUCH CUTTING EDGE KIT w/ HW	0	0	0	1
	ActivEdge, AR400, SEE PAGES 63 & 64					
NS	P50011-L-REK	7' ActivEdge CUTTING KIT w/ HW	1	0	0	0
NS	P50011-M-REK	8' ActivEdge CUTTING KIT w/ HW	0	1	0	0
NS	P50011-N-REK	9' ActivEdge CUTTING KIT w/ HW	0	0	1	0
NS	P50011-O-REK	10' ActivEdge CUTTING KIT w/ HW	0	0	0	1
	CARBIDE ActivEdge, AR400 WITH CARBIDE, SEE PAGES 65 & 66					
NS	P50014-L-REK	7' ActivEdge CUTTING KIT w/ HD	1	0	0	0
NS	P50014-M-REK	8' ActivEdge CUTTING KIT w/ HD	0	1	0	0
NS	P50014-N-REK	9' ActivEdge CUTTING KIT w/ HD	0	0	1	0
NS	P50014-O-REK	10' ActivEdge CUTTING KIT w/ HD	0	0	0	1

ITEM	PART #	DESCRIPTION	QP-102 QTY	QP-114 QTY	QP-126 QTY	QP-138 QTY
	ActivEdge AR400 UPGRADE - Requires Generation 5 Trip Edge (not included)					1
NS	P50011-L-SEC	7' ActivEdge UPGRADE KIT	1	0	0	
NS	P50011-M-SEC	8' ActivEdge UPGRADE KIT	0	1	0	0
NS	P50011-N-SEC	9' ActivEdge UPGRADE KIT	0	0	1	0
NS	P50011-O-SEC	10' ActivEdge UPGRADE KIT	0	0	0	1
	ActivEdge w/ CARBIDE UPGRADE - Requires Generation 5 Trip Edge (not included)					2
NS	P50014-L	7' ActivEdge UPGRADE KIT, w/ CARBIDE	1	0	0	0
NS	P50014-M	8' ActivEdge UPGRADE KIT, w/ CARBIDE	0	1	0	0
NS	P50014-N	9' ActivEdge UPGRADE KIT, w/ CARBIDE	0	0	1	0
NS	P50014-O	10' ActivEdge UPGRADE KIT, w/ CARBIDE	0	0	0	1
	POLY WING EDGE KIT (P60050 - KIT)					
28	P40012	NUT, LOCK, 5/8-11, ZINC, GR C	10	10	10	10
	P81011	BOLT, CARRIAGE, 5/8-11 x 2-1/2", GR8	10	10	10	10
	P60051	URETHANE CUTTING EDGE	2	2	2	2
	P60101	HOLD DOWN STRIP, OUTSIDE URETHANE EDGE	2	2	2	2
	P60052	CUTTING EDGE, URETHANE, REAR LEFT OR RIGHT	2	2	2	2
	P60100	HOLD DOWN STRIP, INSIDE URETHANE EDGE	2	2	2	2
	P60096	Washer, Flat, 5/8" SAE, GR8	6	6	6	6
	STEEL WING EDGE KIT (P60023 - KIT)					
29	P20028	NUT, LOCK, 3/4-10, GR C	6	6	6	6
	P30051	WASHER, FLAT, 3/4	6	6	6	6
	P40012	NUT, LOCK, 5/8-11, GR C	6	6	6	6
	P60008	BOLT, CARRIAGE, 5/8-11 x 2-1/2"	4	4	4	4
	P60115	BOLT, HEX, 3/4-10 x 2-3/4", GR 8	6	6	6	6
	P60013	WING EDGE, STEEL, LEFT SIDE	1	1	1	1
	P60014	WING EDGE, STEEL, RIGHT SIDE	1	1	1	1
	P60015	WASHER, CUSTOM, 2.25", STEEL EDGE	6	6	6	6
	P60016	BUSHING, 1.25" x .90", STEEL EDGE	6	6	6	6
	P60095	WASHER, FLAT 3/4" USS	6	6	6	6
	P60052	CUTTING EDGE, URETHANE, REAR LEFT OR RIGHT	2	2	2	2
	P60100	HOLD DOWN STRIP, INSIDE URETHANE EDGE	2	2	2	2

ITEM	PART #	DESCRIPTION	QP-102 QTY	QP-114 QTY	QP-126 QTY	QP-138 QTY
	WEAR SHOES (P40003-S - KIT)					
30	P40003	WELDMENT, WEAR SHOE, W/ SPACERS & KLIK PINS	2	2	2	2
	POWER WING MANIFOLD (OPTION) (See page 62)					
NS	P60093-K	POWERWING MANIFOLD WITH FITTINGS AND DIODE HARNESS	1	1	1	1
	AUTOWING MANIFOLD (OPTION) (See page 61)					
NS	P60068-K	AUTOWING MANIFOLD WITH FITTINGS	1	1	1	1
	SPILL GUARD (OPTION)					
NS	P60276-K	7' SPILL GUARD, w/ HW	1	0	0	0
NS	P60270-K	8' SPILL GUARD, w /HW	0	1	0	0
NS	P60271-K	9' SPILL GUARD, w /HW	0	0	1	0
NS	P60272-K	10' SPILL GUARD, w/ HW	0	0	0	1

This page left intentionally blank

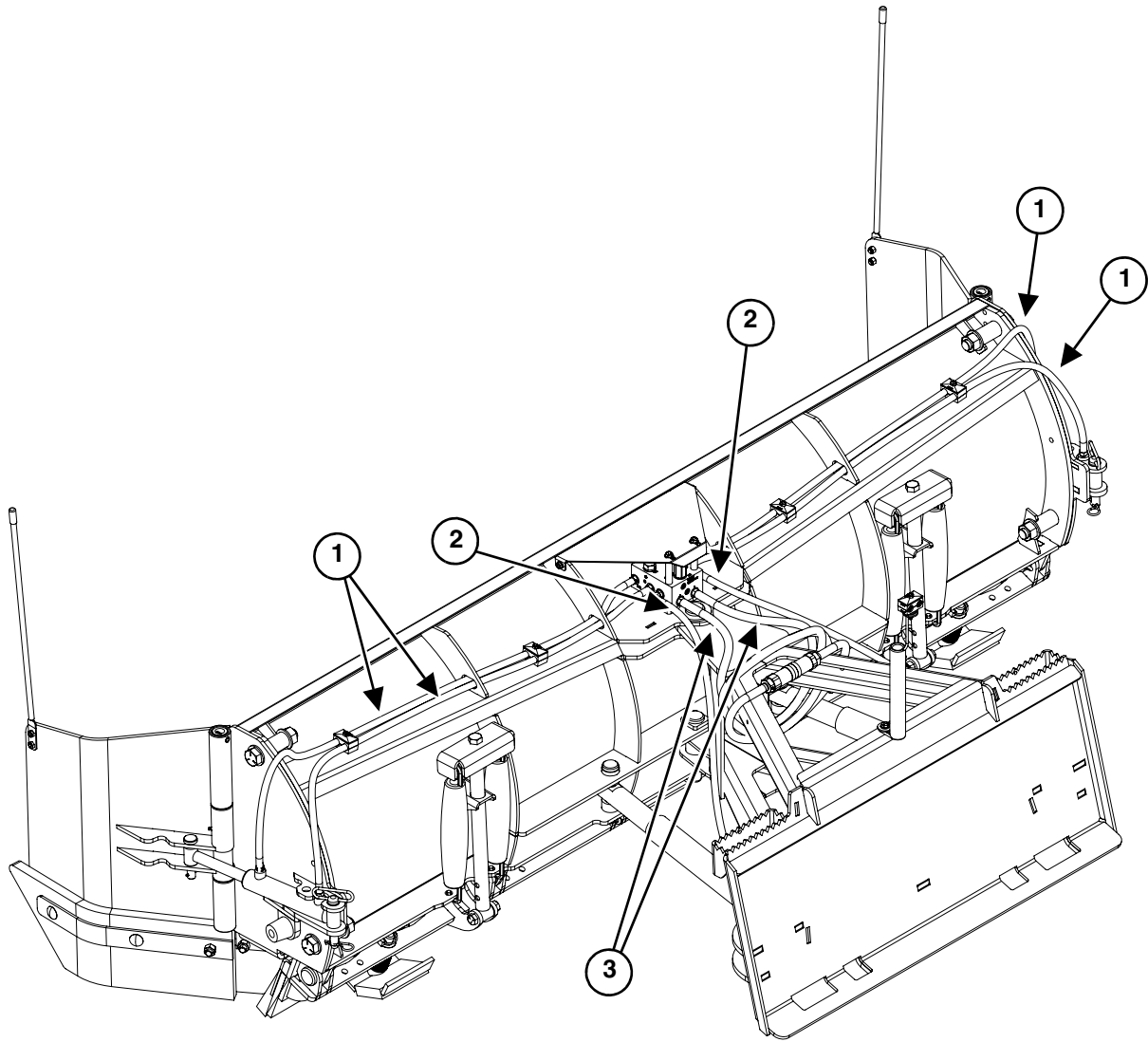
Side Wing (QP Models)



ITEM	PART #	DESCRIPTION	QTY
1	P38221	RUBBER-LOK TRIM 1/4"	2
*2	P40012	NUT, LOCK, 5/8-11, ZINC, GR C	10
3	P50001	BLADE MARKER GUIDE SET	2
4	P60024	NUT, LOCK, 1-8, GR C	4
*5	P60052	CUTTING EDGE, URETHANE, REAR LEFT OR RIGHT	2
6	P60057	PIN, WING CYLINDER D HANDLE (HITCH PIN), W/QUICK CLIP	2
7	P20041	PIVOT BOLT, HEX, 1" - 8 x 7.5"	4
8	P60097	LH WING REAR WELDMENT	1
9	P60098	LH WING FRONT WELDMENT	1
NS	P60061	RH WING REAR WELDMENT (NOT SHOWN)	1
NS	P60062	RH WING FRONT WELDMENT (NOT SHOWN)	1
*10	P60100	HOLD DOWN STRIP, INSIDE URETHANE EDGE	2
11	P60102	PIN, HINGE	2
12	P60158	WING BUMP STOP, 2"W x 1-3/4"H, 3/8" BOLT DIA	2
13	P60206	WASHER, FLAT, 1" SAE, GR 8	12
14	P60211	NUT, HEX, NYLOCK, 3/8", GR 8	3
15	P60227	PIN, ROLL, 1/2 x 2"	2
16	P60235	BOLT, HEX, 3/8" x 2", GR 8	2
17	P20029	PIN, 3/4" x 4"	2
18	P20030	PIN, COTTER, 5/32" x 1-1/4"	2
19	P25562	GREASE ZERK, 3/16" POUND IN	2
20	P60205	SPACER, URETHANE	4
*21	P81011	BOLT, CARRIAGE, 5/8-11 x 2-1/2", GR 8	10
*22	P60051	URETHANE CUTTING EDGE	2
*23	P60101	HOLD DOWN STRIP, OUTSIDE URETHANE EDGE	2
For items above 23: See "Options" on page 40.			
* Items included in kit on page 40.			

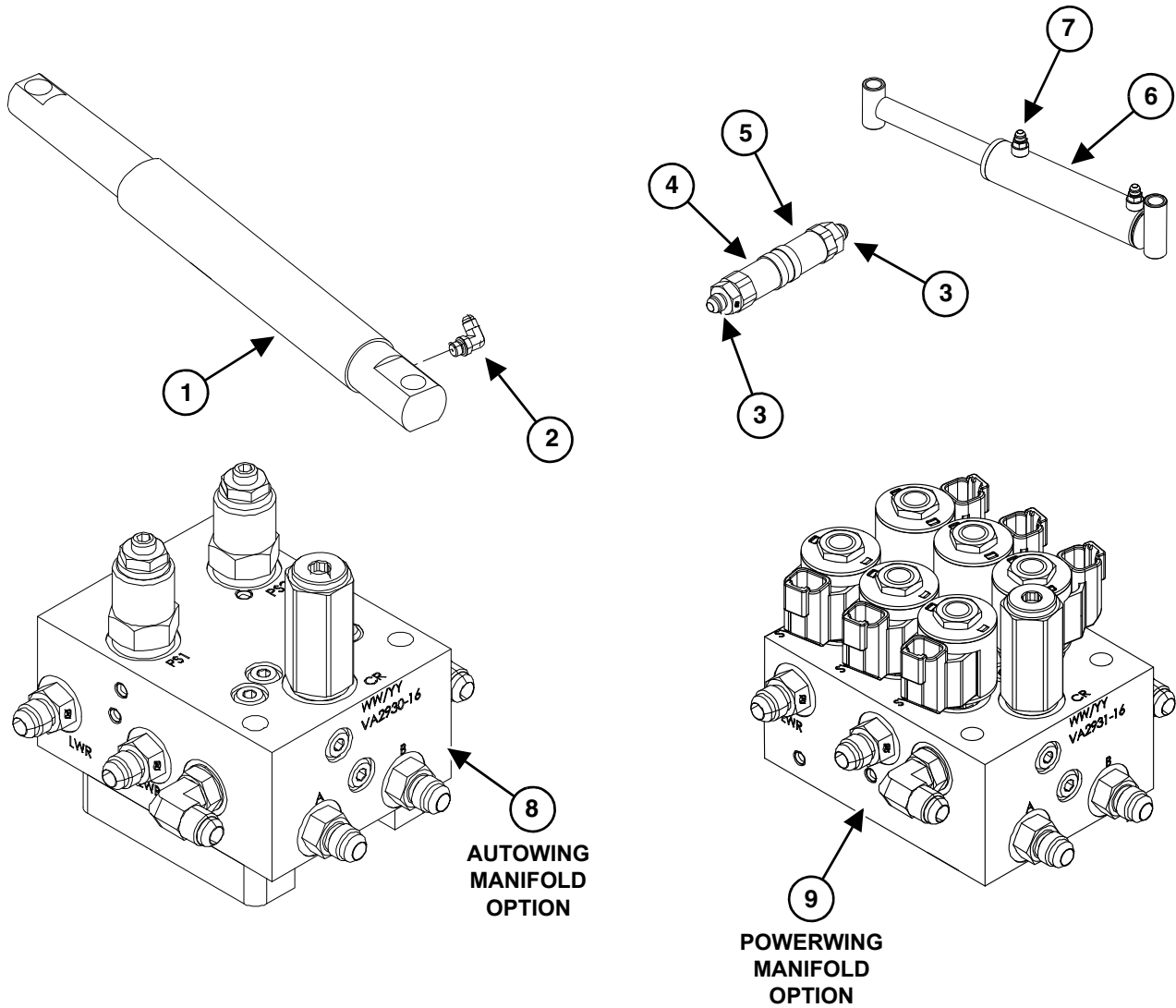
Hydraulics QP102, QP114, QP126, QP138

Hydraulic Hoses (QP Models)



ITEM	PART #	DESCRIPTION	QP-102 QTY	QP-114 QTY	QP-126 QTY	QP-138 QTY
1	P60072	HOSE, 3/8" x 58", 3000 PSI, 6FJIC-6FJIC	4	-	-	-
	P60074	HOSE, 3/8" x 60", 3000 PSI, 6FJIC-6FJIC	-	4	-	-
	P60076	HOSE, 3/8" x 66", 3000 PSI, 6FJIC-6FJIC	-	-	4	-
	P60078	HOSE, 3/8" x 72", 3000 PSI, 6FJIC-6FJIC	-	-	-	4
2	P60082	HOSE, 3/8" x 38", 3000 PSI, 6FJIC-6FJIC	2	2	2	2
3	P50008	HOSE, 3/8" x 78", 3000 PSI, 6FJIC-8FJIC	2	2	2	2

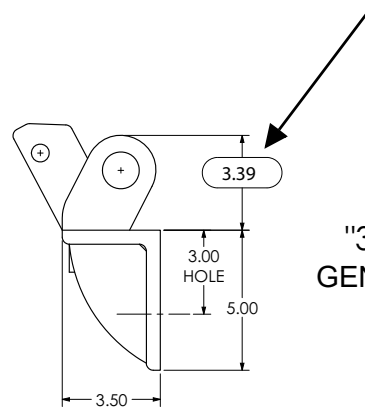
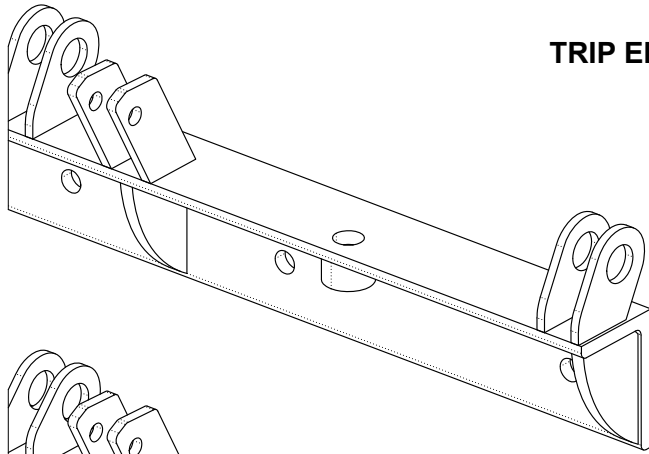
Hydraulic Components (QP Models)



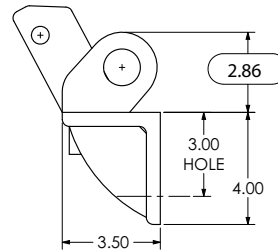
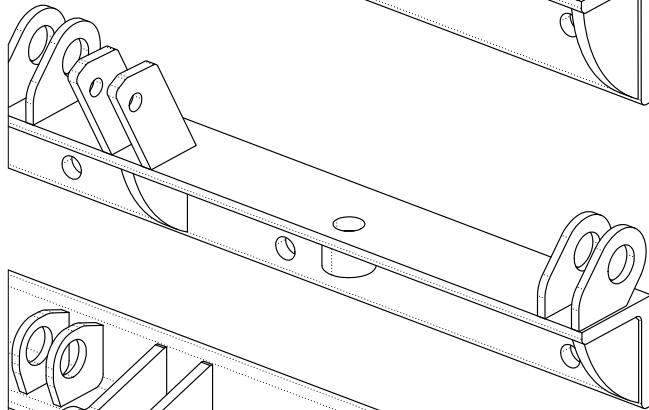
ITEM	PART #	DESCRIPTION	QTY
1	P50006-B	ANGLE CYLINDER, 2" ROD	2
2	P60085	FITTING, ELBOW, 6MJIC - 6MORB (6801R-06-06-.07)	2
3	P50009-A	FITTING, #8 MJIC X #12 MORB	2
4	P50010M	COUPLER, 1/2" MALE FLAT FACE 1/2" BODY x 3/4" PORT	1
5	P50010F	COUPLER, 1/2" FEMALE FLAT FACE 1/2" BODY x 3/4" PORT	1
6	P60055	WING CYLINDER, DUAL ACTING, LEFT OR RIGHT	2
7	P60069	FITTING, #6MORB-#6MJIC, STRAIGHT	4
8	P60068-K	MANIFOLD, AUTOWING W/VALVES (with Fittings) See page 61	1
9	P60093-K	POWERWING MANIFOLD WITH FITTINGS & DIODE HARNESS See page 62	1

Trip Edge Generations (QP Models)

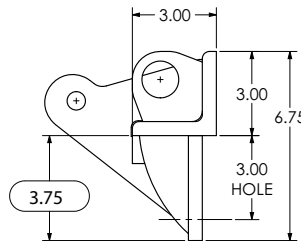
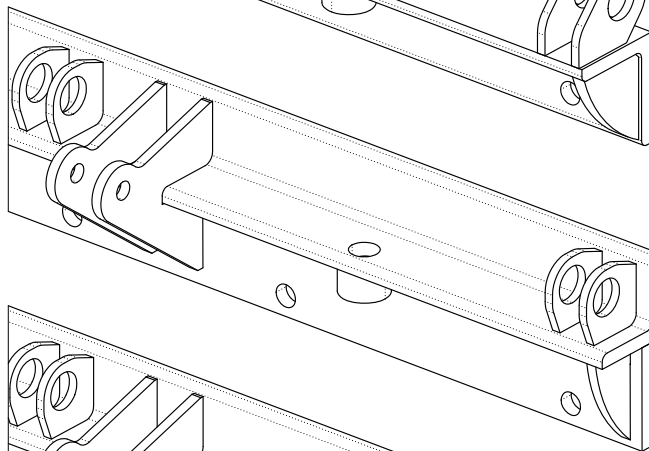
TRIP EDGE MODEL IDENTIFYING DIMENSION



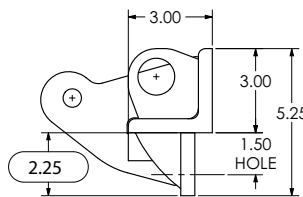
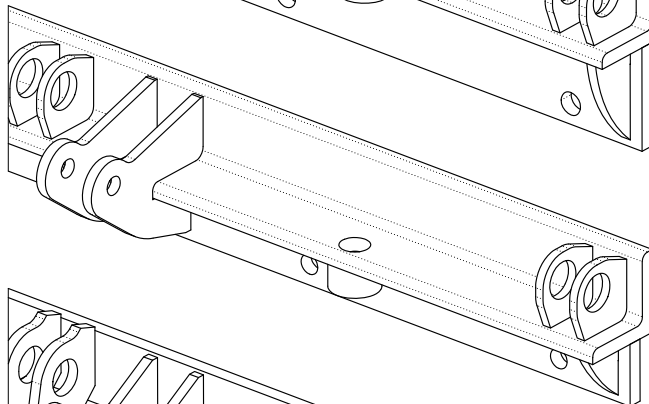
"3.39" EAR"
GENERATION 1



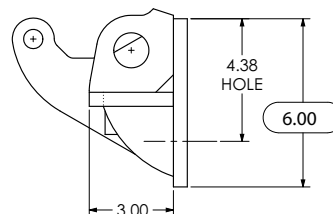
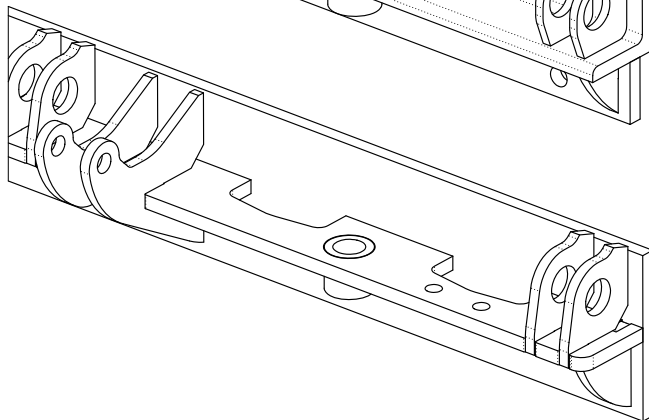
"2.86" EAR"
GENERATION 2



"CENTER PUNCH"
*GENERATION 3



"TOP PUNCH"
*GENERATION 4



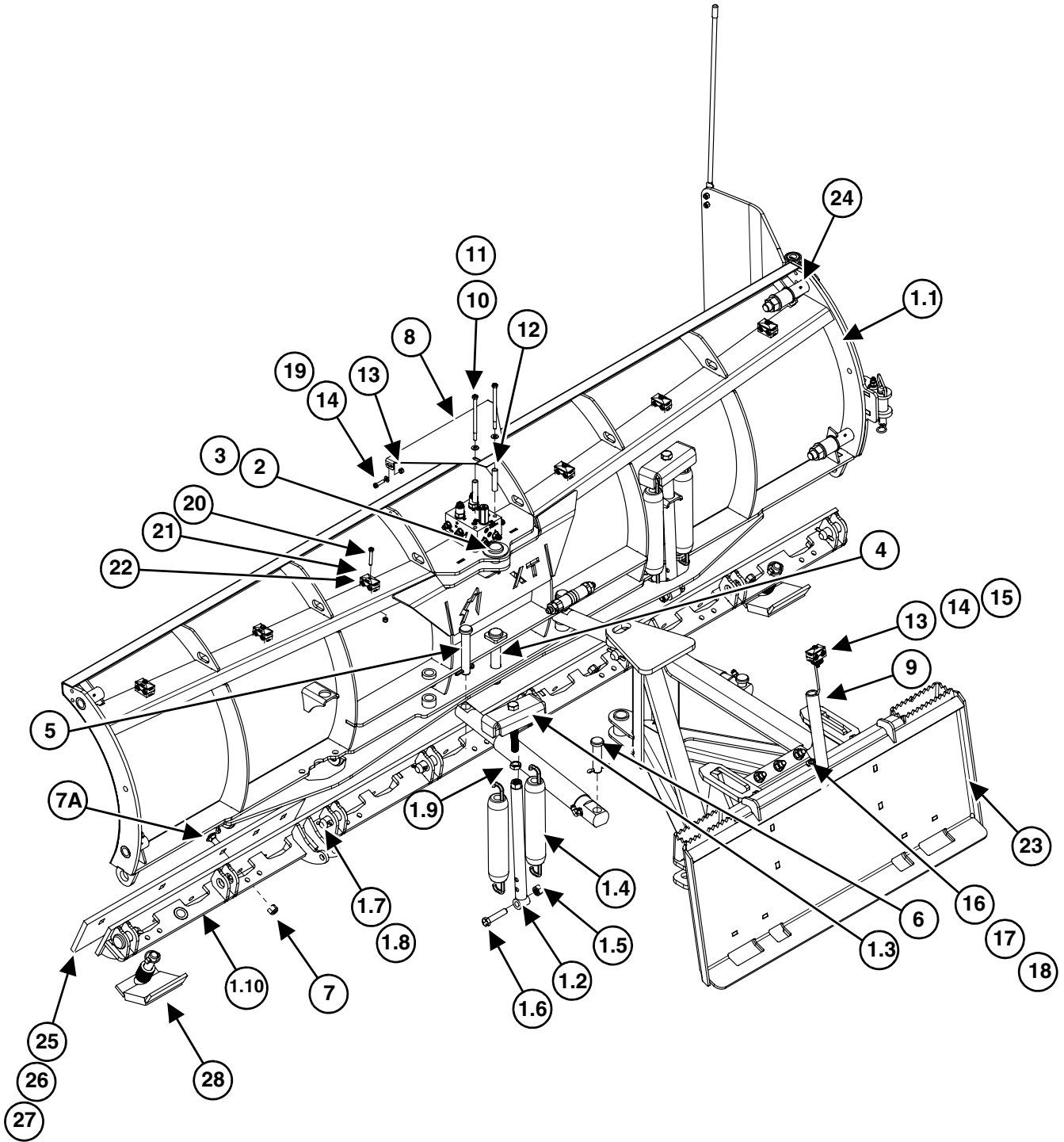
"CURRENT"
GENERATION 5

Decal Identification (QP Models)

PART #	DESCRIPTION	QP-102 QTY	QP-114 QTY	QP-126 QTY	QP-138 QTY
DC37	DECAL, QUATTROPLOW, QP-102	2	0	0	0
DC38	DECAL, QUATTROPLOW, QP-114	0	2	0	0
DC39	DECAL, QUATTROPLOW, QP-126	0	0	2	0
DC40	DECAL, QUATTROPLOW, QP-138	0	0	0	2
DC28	DECAL, SNOWWOLF, MOLDBOARD LEFT	1	1	1	1
DC29	DECAL, WOLFHEAD, MOLDBOARD RIGHT	1	1	1	1
DC36	DECAL, WOLFHEAD, LEFT SIDE PLATE	1	1	1	1
DC58	DECAL, "PATENTS PENDING" WHITE	1	1	1	1
DC68	DECAL, TAG US, BLACK W/YELLOW	1	1	1	1
P20019	DECAL, "DANGER PINCH AREA"	4	4	4	4
SWSN	DECAL, SERIAL #	1	1	1	1

Models QPXT126, QPXT138, QPXT150

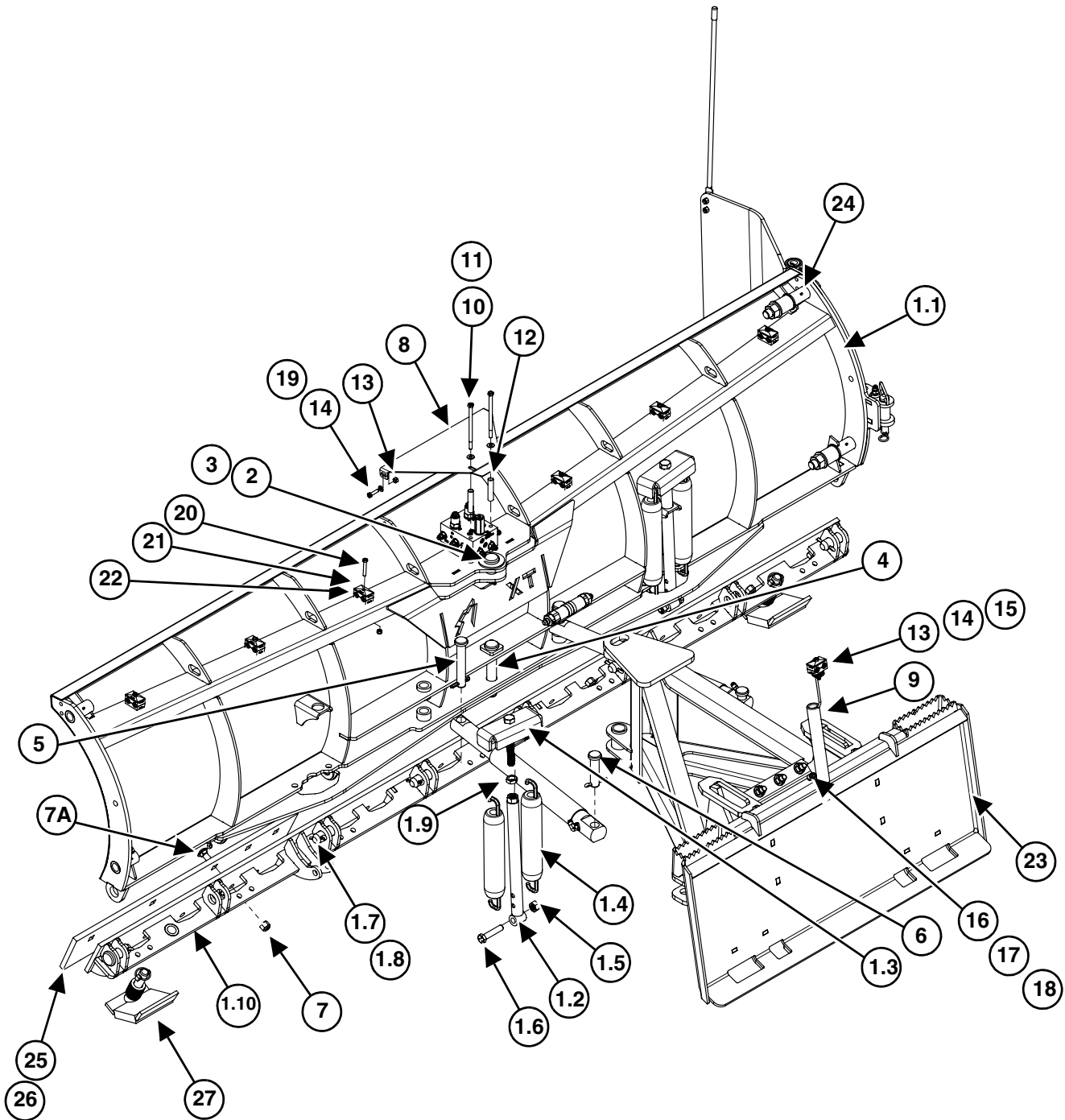
Parts



ITEM	PART #	DESCRIPTION	QPXT-126 QTY	QPXT-138 QTY	QPXT-150 QTY
1	P40108XT	BLADE ASSEMBLY, QPXT-126	1	0	0
	P40120XT	BLADE ASSEMBLY, QPXT-138	0	1	0
	P40132XT	BLADE ASSEMBLY, QPXT-150	0	0	1
1.1	P40017XT	BLADE WELDMENT ONLY, (NO SPRINGS OR TRIP EDGE)	1	0	0
	P40018XT	BLADE WELDMENT ONLY, (NO SPRINGS OR TRIP EDGE)	0	1	0
	P40019XT	BLADE WELDMENT ONLY, (NO SPRINGS OR TRIP EDGE)	0	0	1
1.2	P40026	SPRING ADJUSTMENT ROD ASM	2	2	2
1.3	P40009-B	SPRING ADJUSTMENT ASM	2	2	2
1.4	P40010B	SPRING, TRIP, 6'-10' NEW STYLE	4	4	4
1.5	P40012	NUT, LOCK, 5/8"-11, GR C	2	2	2
1.6	P40013	BOLT, HEX, 5/8"-11 x 3", GRADE 8	2	2	2
1.7	P40006	PIN, UPPER PIVOT/TRIP EDGE 1-3/16" x 3"	6	8	8
1.8	P40007	PIN, COTTER, 1/4" x 2"	6	8	8
1.9	P60242	NUT, JAM, 3/4"-10	2	2	2
1.10	P40002-N	9' TRIP EDGE WELDMENT, GEN 5	1	0	0
	P40002-O	10' TRIP EDGE WELDMENT, GEN 5	0	1	0
	P40002-P	11' TRIP EDGE WELDMENT, GEN 5	0	0	1
2	P40006	PIN, UPPER PIVOT/TRIP EDGE 1-3/16" x 3"	1	1	1
3	P40007	PIN, COTTER, 1/4" x 2"	1	1	1
4	P50003	PIN, LOWER PIVOT 1-1/8" x 6-3/4"	1	1	1
5	P50004	PIN, RAM ANCHOR (BLADE END) 1" x 6"	2	2	2
6	P50005	PIN, RAM ANCHOR (FRAME END) 1" x 4"	2	2	2
7	P60030	NUT, HEX, NYLOCK, 5/8"-11	12	13	14
7A	P60010	BOLT, CARRIAGE, 5/8-11 x 2", ZINC, GR5	12	13	14
8	P60071	MANIFOLD SHROUD	1	1	1
9	P60084	SPRING, HOSE HOLDER	1	1	1
10	P60087	BOLT, HEX, 3/8" x 6"	2	2	2
11	P60088	WASHER, FLAT, 3/8"	3	3	3

Models QPXT126, QPXT138, QPXT150 (Cont'd)

Parts (Cont'd)



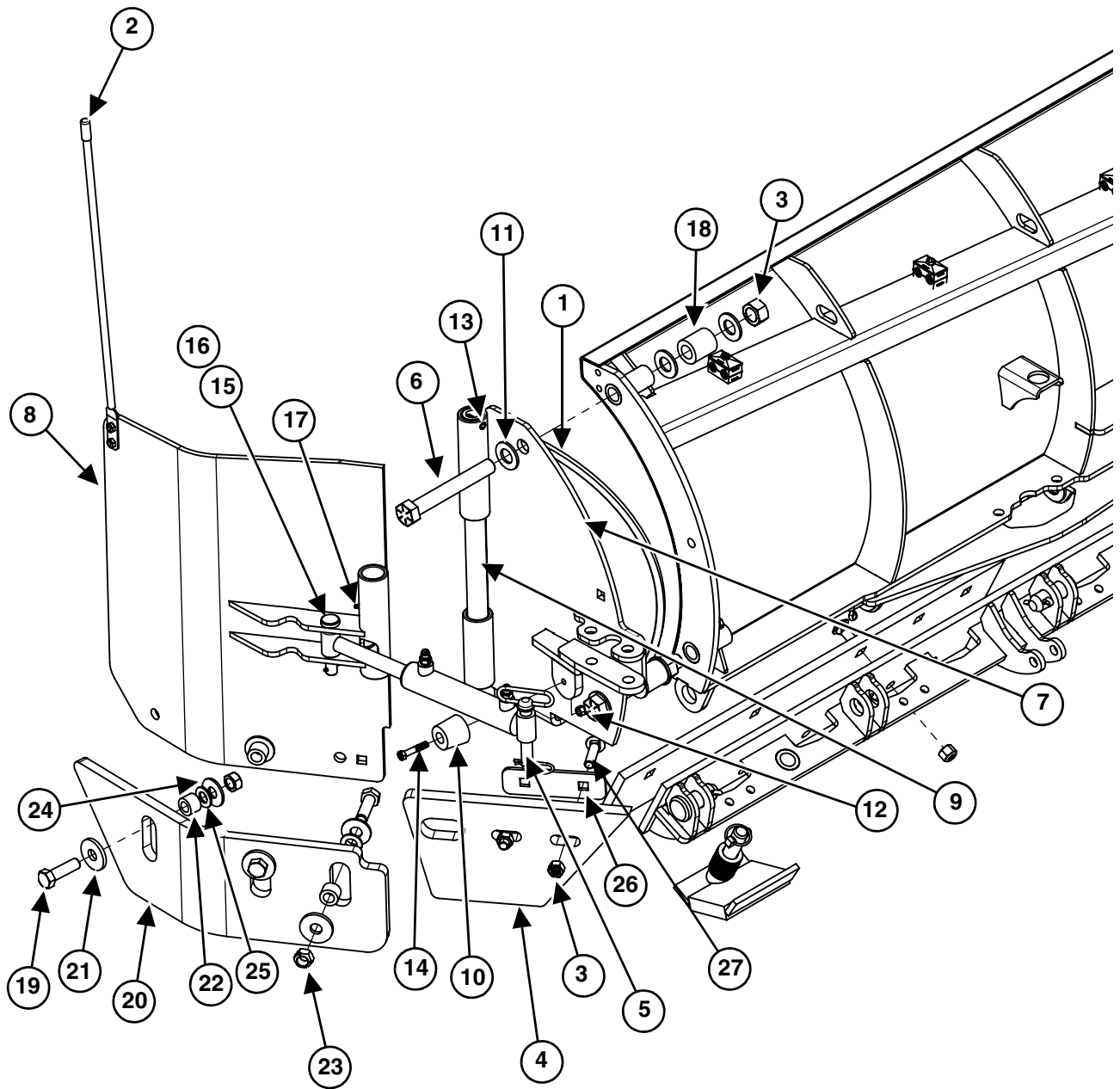
ITEM	PART #	DESCRIPTION	QPXT-126 QTY	QP-XT-138 QTY	QPXT-150 QTY
12	P60089	MANIFOLD SHROUD BOLT SPACER	2	2	2
13	P60090	NUT, HEX, NYLOCK, 5/16"-18	7	9	9
14	P60092	WASHER, FLAT, 5/16"	3	3	3
15	P60094	BOLT, HEX, 5/16-18 x 2-1/2", GR 5	1	1	1
16	P60209	WASHER, FLAT, 1/2" USS	3	3	3
17	P60210	BOLT, HEX, 3/8" x 1-1/4"	1	1	1
18	P60211	NUT, HEX, NYLOCK, 3/8", GR 8	1	1	1
19	P60214	BOLT, HEX, 5/16-18 x 1-1/4", GR 5	2	2	2
20	P60215	BOLT, HEX, 5/16 X 2, GR 5	4	4	6
21	P60159	HOSE CLAMP	5	7	7
22	P60160	PLATE, HOSE CLAMP	5	7	7
23	P50020	FLEX FRAME, ASSEMBLY, SEE PAGE 68	1	1	1
24	P25562	GREASE ZERK, 3/16" POUND IN	4	4	4
For items above 24: See "Options (QPXT Models)" on page 54.					
For hydraulic hoses: See "Hydraulic Hoses (QPXT Models)" on page 58.					
For hydraulic components: See "Hydraulic Components (QPXT Models)" on page 59.					

Options (QPXT Models)

ITEM	PART #	DESCRIPTION	QPXT-126 QTY	QPXT-138 QTY	QPXT-150 QTY
	MAIN EDGE - (See Trip Edges on page 48)				
	Steel Options				
25	P50011-N	9' Top Punch Cutting Edge Kit w/ HW (Gen 4 or 5 Trip Edge)	1	0	0
	P50011-O	10' Top Punch Cutting Edge Kit w/ HW (Gen 4 or 5 Trip Edge)	0	1	0
	P50011-P	11' Top Punch Cutting Edge Kit w/ HW (Gen 4 or 5 Trip Edge)	0	0	1
26	P50011-G	9' Center Punch Cutting Edge Kit w/ HW (Gen 1, 2, or 3 Trip Edge)	1	0	0
	P50011-H	10' Center Punch Cutting Edge Kit w/ HW (Gen 1, 2, or 3 Trip Edge)	0	1	0
	P50011-I	11' Center Punch Cutting Edge Kit w/ HW (Gen 1, 2, or 3 Trip Edge)	0	0	1
	ActivEdge, AR400, SEE PAGES 63 & 64				
NS	P50011-N-REK	9' ActivEdge REPLACEMENT KIT w/ HW	1	0	0
NS	P50011-O-REK	10' ActivEdge REPLACEMENT KIT w/ HW	0	1	0
NS	P50011-P-REK	11' ActivEdge REPLACEMENT KIT w/ HW	0	0	1
	CARBIDE ActivEdge, AR400 WITH CARBIDE, SEE PAGES 65 & 66				
NS	P50014-N-REK	9' ActivEdge REPLACEMENT KIT w/ HW	1	0	0
NS	P50014-O-REK	10' ActivEdge REPLACEMENT KIT w/ HW	0	1	0
NS	P50014-P-REK	11' ActivEdge REPLACEMENT KIT w/ HW	0	0	1
	ActivEdge AR400 UPGRADE - Requires Generation 5 Trip Edge (not included)				
NS	P50011-N-SEC	9' ActivEdge UPGRADE KIT	1	0	0
NS	P50011-O-SEC	10' ActivEdge UPGRADE KIT	0	1	0
NS	P50011-P-SEC	11' ActivEdge UPGRADE KIT	0	0	1
	ActivEdge w/ CARBIDE UPGRADE - Requires Generation 5 Trip Edge (not included)				
NS	P50014-N	9' ActivEdge UPGRADE KIT, w/ CARBIDE	1	0	0
NS	P50014-O	10' ActivEdge UPGRADE KIT, w/ CARBIDE	0	1	0
NS	P50014-P	11' ActivEdge UPGRADE KIT, w/ CARBIDE	0	0	1

ITEM	PART #	DESCRIPTION	QPXT-126 QTY	QPXT-138 QTY	QPXT-150 QTY
	WEAR SHOES				
	P40003-S	KIT, WEAR SHOE SET, w/ SPACER & KLIK PINS	1	1	1
27	P40003	WELDMENT, WEAR SHOE, w/SPACERS & KLIK PINS	2	2	2
	POWER WING (OPTION) (See page 62)				
NS	P60093-K	POWERWING MANIFOLD WITH FITTINGS AND DIODE HARNESS	1	1	1
	AUTOWING MANIFOLD (See page 61)				
NS	P60068-K	AUTOWING MANIFOLD WITH FITTINGS	1	1	1
	SPILL GUARD				
NS	P60271-K	9' SPILL GUARD, w/ HW	1	0	0
NS	P60272-K	10' SPILL GUARD, w/ HW	0	1	0
NS	P60273-K	11' SPILL GUARD, w/ HW	0	0	1

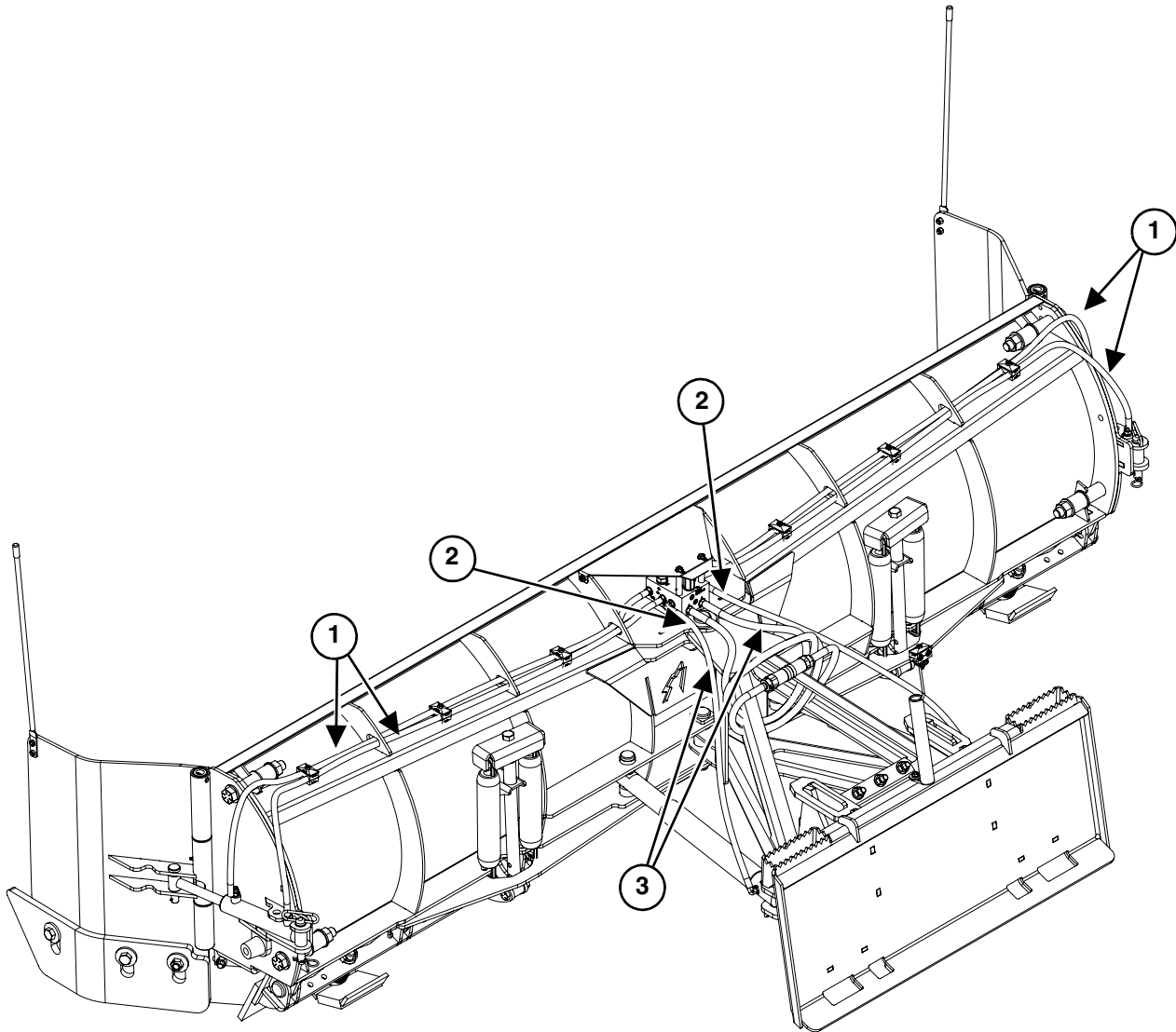
Side Wing (QPXT Models)



ITEM	PART #	DESCRIPTION	QTY
1	P38221	RUBBER-LOK TRIM 1/4"	2
2	P50001	BLADE MARKER GUIDE SET	2
3	P40012	NUT, LOCK, 5/8-11, ZINC, GR C	4
4	P60052	CUTTING EDGE, URETHANE, REAR LEFT OR RIGHT	2
5	P60057	PIN, WING CYLINDER D HANDLE (HITCH PIN), W/QUICK CLIP	2
6	P20041	PIVOT BOLT, HEX, 1"- 8 x 7.5"	4
7	P60097	LH WING REAR WELDMENT	1
8	P60098	LH WING FRONT WELDMENT	1
NS	P60061	RH WING REAR WELDMENT (NOT SHOWN)	1
NS	P60062	RH WING FRONT WELDMENT (NOT SHOWN)	1
9	P60102	PIN, HINGE	2
10	P60158	WING BUMP STOP, 2"W x 1-3/4"H, 3/8" BOLT DIA	2
11	P60206	WASHER, FLAT, 1" GR 8	12
12	P60211	NUT, HEX, NYLOCK, 3/8", GR 8	1
13	P60227	PIN, ROLL, 1/2 x 2"	2
14	P60235	BOLT, HEX, 3/8" x 2", GR 8	2
15	P20029	PIN, 3/4" x 4"	2
16	P60230	PIN, COTTER, 5/32" x 1-1/4"	2
17	P25562	GREASE ZERK, 3/16" POUND IN	2
18	P60205	SPACER, URETHANE	4
19	P60115	BOLT, HEX, 3/4-10 x 2-3/4, ZINC, GR 8	6
20	P60013	WING EDGE, STEEL, LEFT SIDE	1
NS	P60014	WING EDGE, STEEL, RIGHT SIDE (NOT SHOWN)	1
21	P60015	WASHER, CUSTOM, 2.25"	6
22	P60016	BUSHING, 1.25" x .90"	6
23	P20028	NUT, LOCK, 3/4-10, GR C	6
24	P60095	WASHER, FLAT 3/4" USS	6
25	P30051	WASHER, FLAT 3/4"	6
26	P60100	HOLD DOWN STRIP, INSIDE URETHANE EDGE	2
27	P60008	BOLT, CARRIAGE, 5/8-11 x 2-1/2, ZINC, GR 8	4

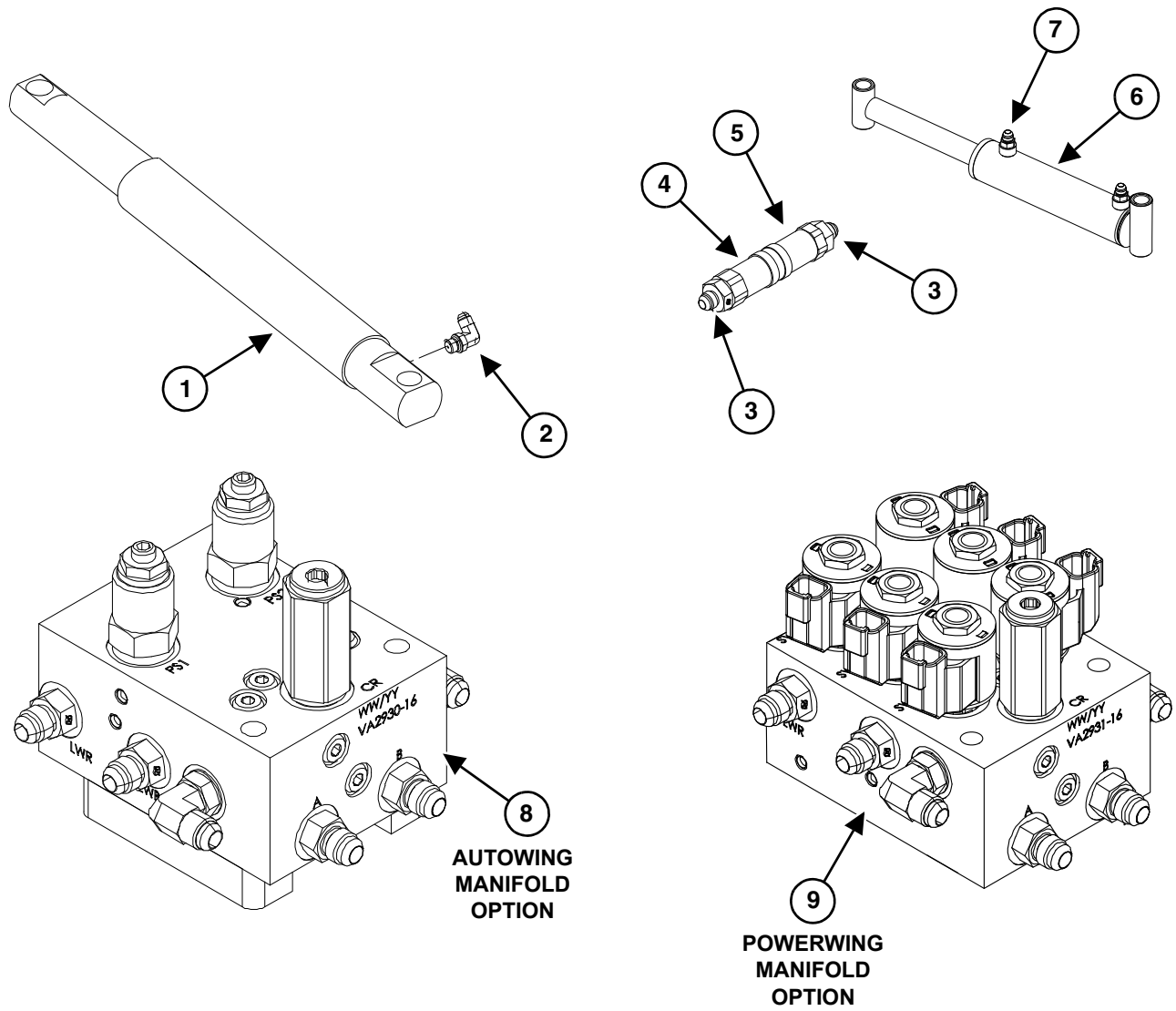
Hydraulics QPXT126, QPXT138, QPXT150

Hydraulic Hoses (QPXT Models)



ITEM	PART #	DESCRIPTION	QPXT-126 QTY	QPXT-138 QTY	QPXT-150 QTY
1	P60076	HOSE, 3/8" x 66", 3000 PSI, 6FJIC-6FJIC	4	0	0
	P60078	HOSE, 3/8" x 72", 3000 PSI, 6FJIC-6FJIC	0	4	0
	P60080	HOSE, 3/8" x 78", 3000 PSI, 6FJIC-6FJIC	0	0	4
2	P60082	HOSE, 3/8" x 38", 3000 PSI, 6FJIC-6FJIC	2	2	2
3	P50008	HOSE, 3/8" x 78", 3000 PSI, 6FJIC-8FJIC	2	2	2

Hydraulic Components (QPXT Models)



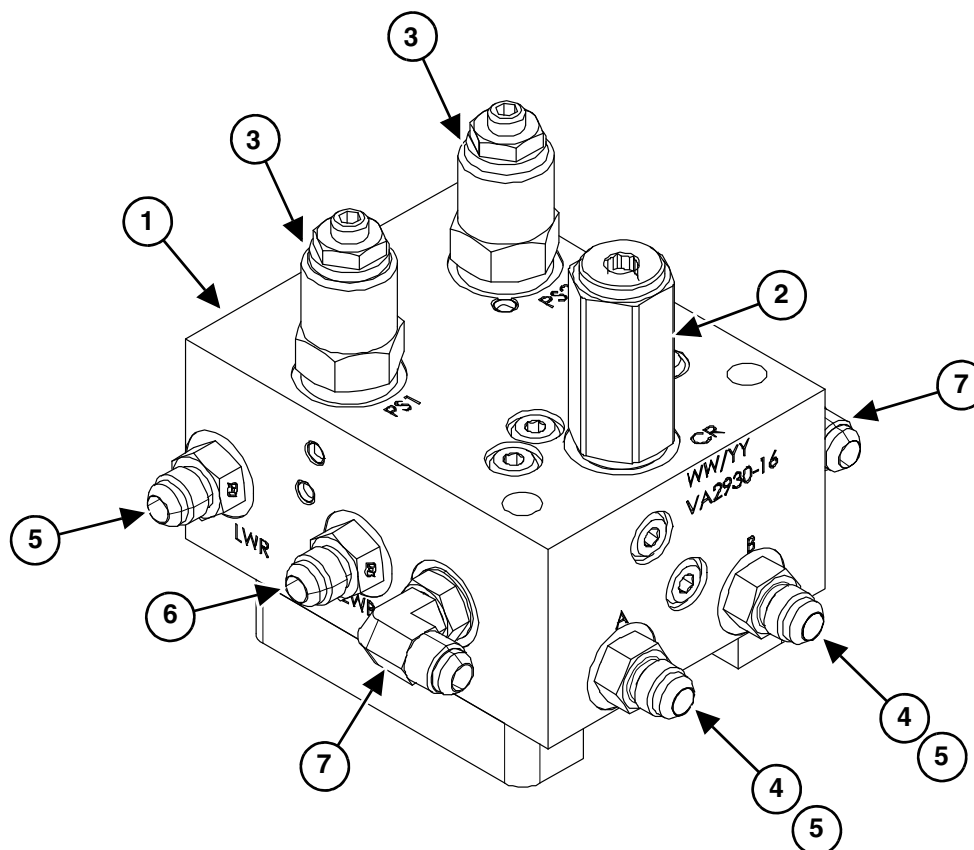
ITEM	PART #	DESCRIPTION	QTY
1	P50006-B	ANGLE CYLINDER, 2" ROD	2
2	P60085	FITTING, ELBOW, 6MJIC - 6MORB (6801R-06-06-.07)	2
3	P50009-A	FITTING, #8 MJIC X #12 MORB	2
4	P50010M	COUPLER, 1/2" MALE FLAT FACE 1/2" BODY x 3/4" PORT	1
5	P50010F	COUPLER, 1/2" FEMALE FLAT FACE 1/2" BODY x 3/4" PORT	1
6	P60055	WING CYLINDER, DUAL ACTING, LEFT OR RIGHT	2
7	P60069	FITTING, #6MORB-#6MJIC, STRAIGHT	4
8	P60068-K	MANIFOLD, AUTOWING W/VALVES (with Fittings) See page 61	1
9	P60093-K	POWERWING MANIFOLD WITH FITTINGS & DIODE HARNESS See page 62	1

Decal Identification (QPXT Models)

PART #	DESCRIPTION	QPXT-126 QTY	QPXT-138 QTY	QPXT-150 QTY
DC96	DECAL, QUATTROPLOW, QPXT-126	2	0	0
DC97	DECAL, QUATTROPLOW, QPXT-138	0	2	0
DC98	DECAL, QUATTROPLOW, QPXT-150	0	0	2
DC28	DECAL, SNOWWOLF, MOLDBOARD LEFT	1	1	1
DC29	DECAL, WOLFHEAD, MOLDBOARD RIGHT	1	1	1
DC36	DECAL, WOLFHEAD, LEFT SIDE PLATE	1	1	1
DC58	DECAL, "PATENTS PENDING" WHITE	1	1	1
DC68	DECAL, TAG US, BLACK W/YELLOW	1	1	1
P20019	DECAL, "DANGER PINCH AREA"	4	4	4
SWSN	DECAL, SERIAL #	1	1	1

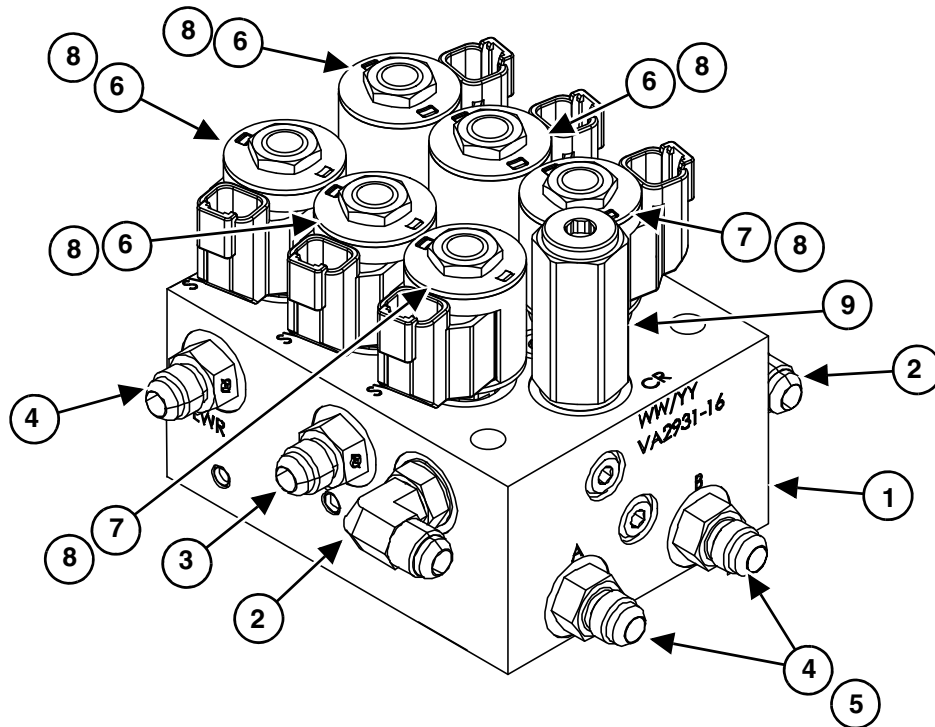
Options (Model Specific)

Hydraulic Manifold AutoWing (QP and QPXT Models)



ITEM	PART #	DESCRIPTION	QTY
	P60068-K	MANIFOLD, AUTOWING W/VALVES (with Fittings)	1
1	P60068	MANIFOLD, AUTOWING ASSEMBLY, W/VALVES (no fittings)	1
2	P60131	CROSS OVER RELIEF VALVE, 2500 PSI	1
3	P60126	WING CONTROL VALVE, 2250 PSI	2
4	P60067	SLIDING RESTRICTOR, .062	2
5	P60069	FITTING, #6MORB-#6MJIC, STRAIGHT	4
6	P38136	FITTING, 6400-06-06-.035 06MORB/06MJIC (RESTRICTED)	2
7	P60085	FITTING, 90 DEG, #6MORB-#6MJIC	2

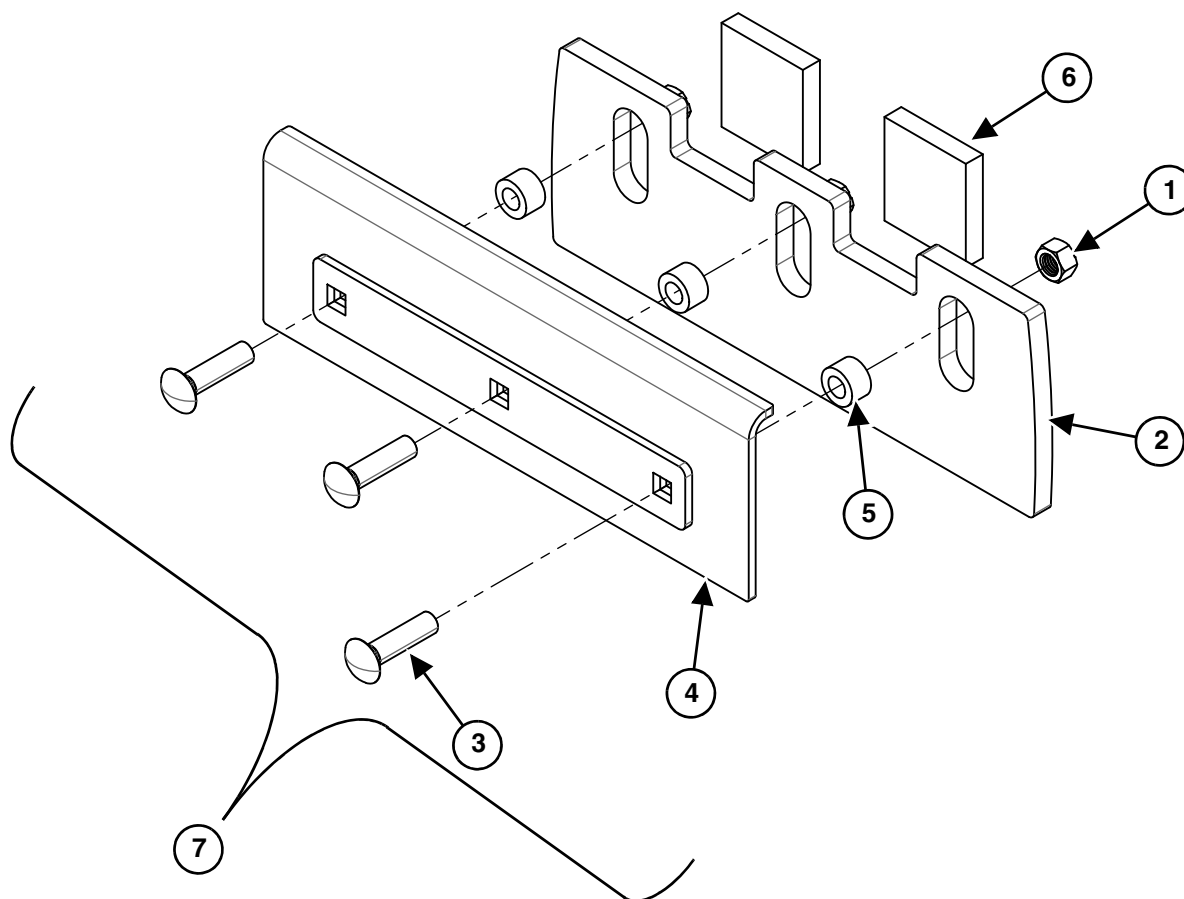
Hydraulic Manifold PowerWing, (QP and QPXT Models)



ITEM	PART #	DESCRIPTION	QTY
	P60093-K	POWERWING MANIFOLD & DIODE HARNESS (with fittings)	1
NS	P60103	HARNESS, DIODE, QUATTRO POWER	1
1	P60093	MANIFOLD, ASSEMBLY W/VALVES (no fittings)	1
2	P60085	FITTING, 90 DEG, #6MORB-#6MJIC	2
3	P38136	FITTING, 6400-06-06-.035 06MORB/06MJIC (RESTRICTED)	2
4	P60069	FITTING, STR, #6MORB-#6MJIC	4
5	P60067	SLIDING RESTRICTOR, .062	2
6	P60124	VALVE, SOLENOID, (FOR WING ONLY)	4
7	P60125	VALVE, SOLENOID, (FOR ANGLE ONLY)	2
8	P30033	E-COIL, 12 VDC	6
9	P60131	CROSS OVER RELIEF VALVE, 2500 PSI	1
NS	MFJC	CONTROLLER, MULTI-FUNCTION	1
NS	P60262	18" ADAPTER HARNESS, CAT, 14-PIN	1
	P60263	18" ADAPTER HARNESS, CAT, 8-PIN	1
	P60265	18" ADAPTER HARNESS, ASV/TEREX, 14-PIN	1
	P60266	18" ADAPTER HARNESS, COMMON 14-PIN	1
	P60267	18" ADAPTER HARNESS, ASV/TEREX, 8-PIN	1
	*P60268	ADAPTER HARNESS, BOBCAT CANBUS 7-PIN TO ANALOG 14-PIN	1
	P60269	18" ADAPTER HARNESS, COMMON 8-PIN	1

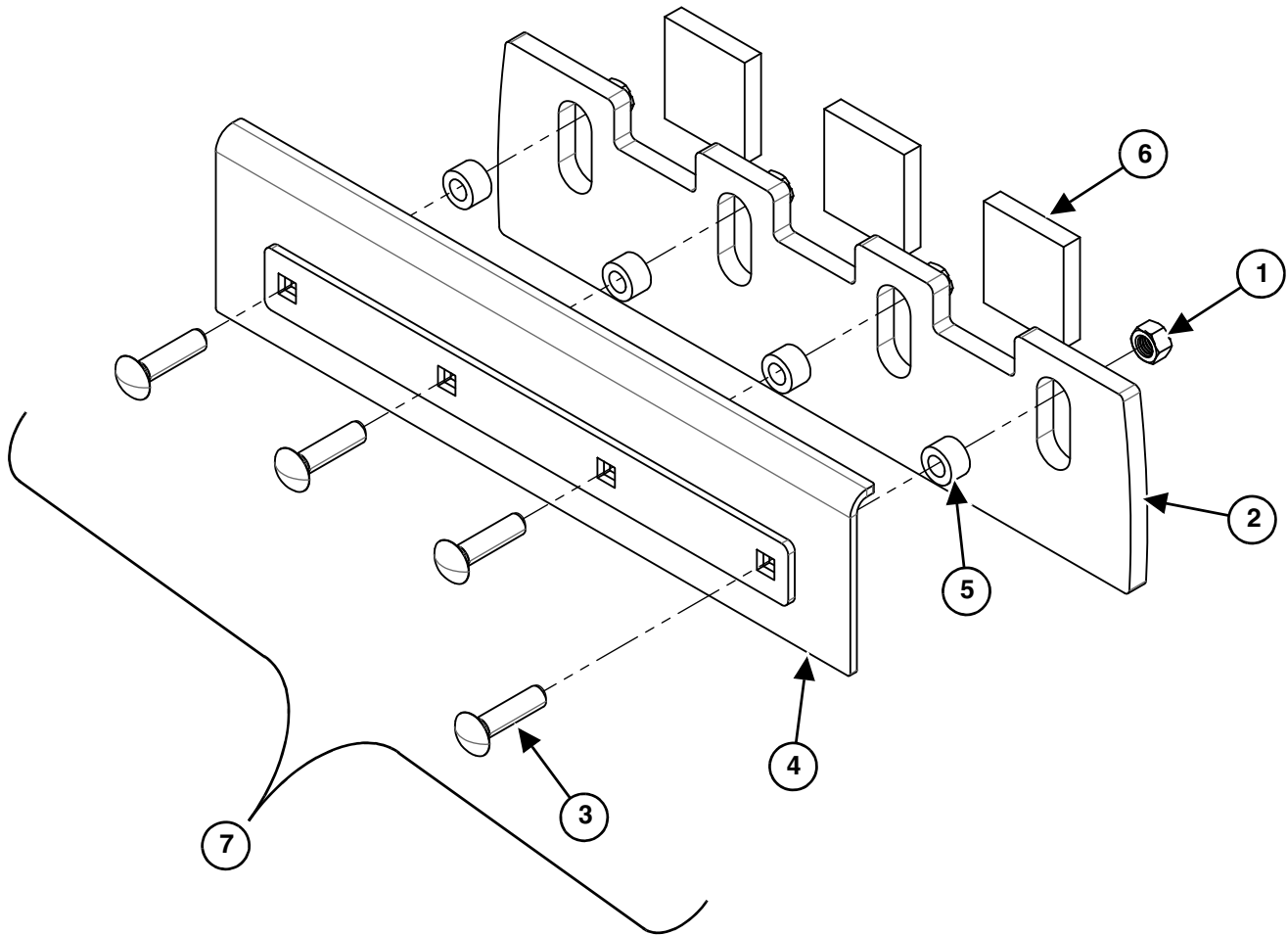
NOTE: *P60268 needs to be paired with P60259 (for machines with Hand/Foot controls, VersaHANDLER, Toolcat) or P60266 (for machines with Joystick controls).

ActivEdge, AR400, 18" Sectional Blade (QP and QPXT Models)



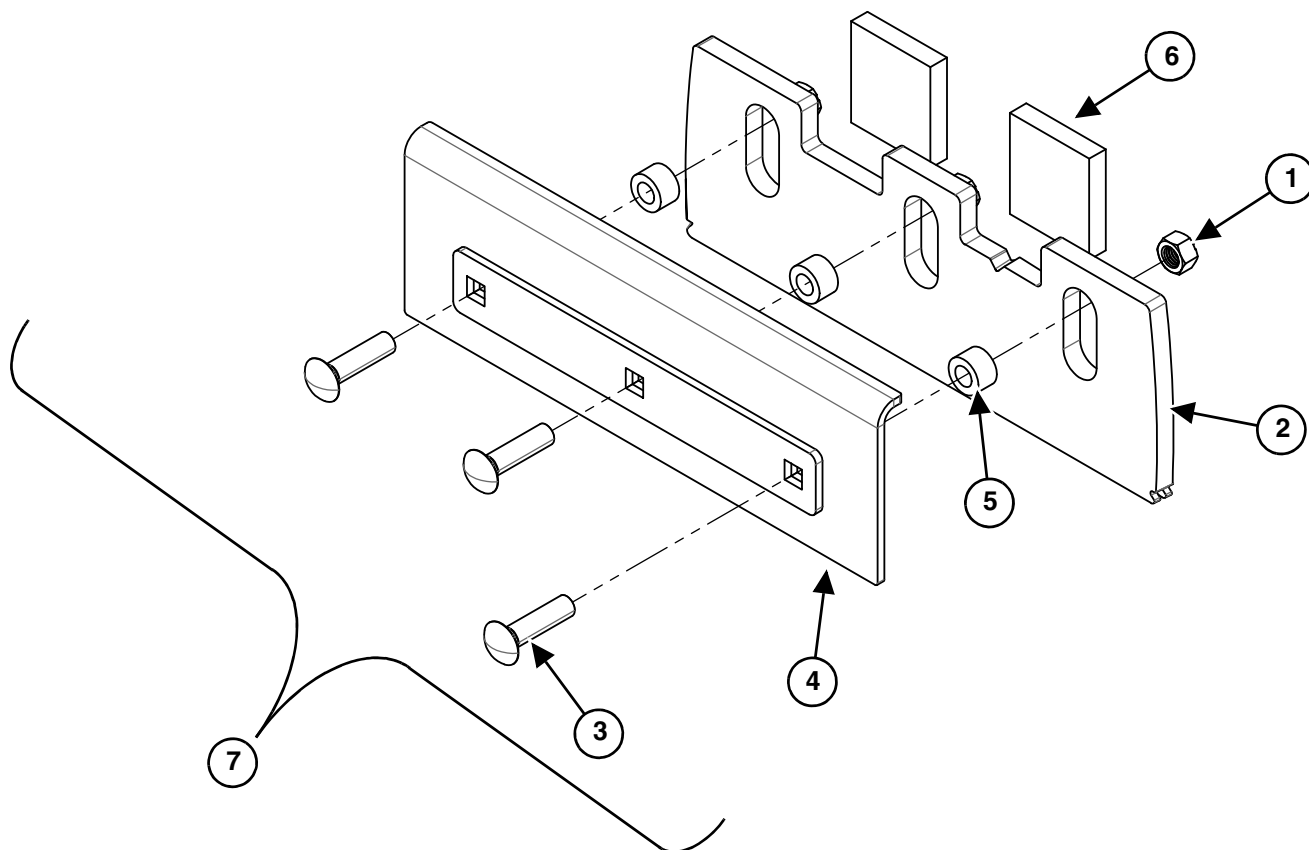
ITEM	PART #	DESCRIPTION	QTY
1	P40012	NUT, LOCK, 5/8-11, ZINC	3
2	P50011-18-SEC	BLADE, 18"	1
3	P81011	BOLT, CARRIAGE, 5/8-11 x 2-1/2", GR 8	3
4	P60255	RETAINING WELDMENT, 18"	1
5	P60253	BUSHING, STANDOFF	3
6	P60254	SPRING, RUBBER	2
7	P60251-K	KIT, 18" SECTION (kit includes items 1, 2, 3, 4, 5, & 6)	1

ActivEdge, AR400, 24" Sectional Blade (QP and QPXT Models)



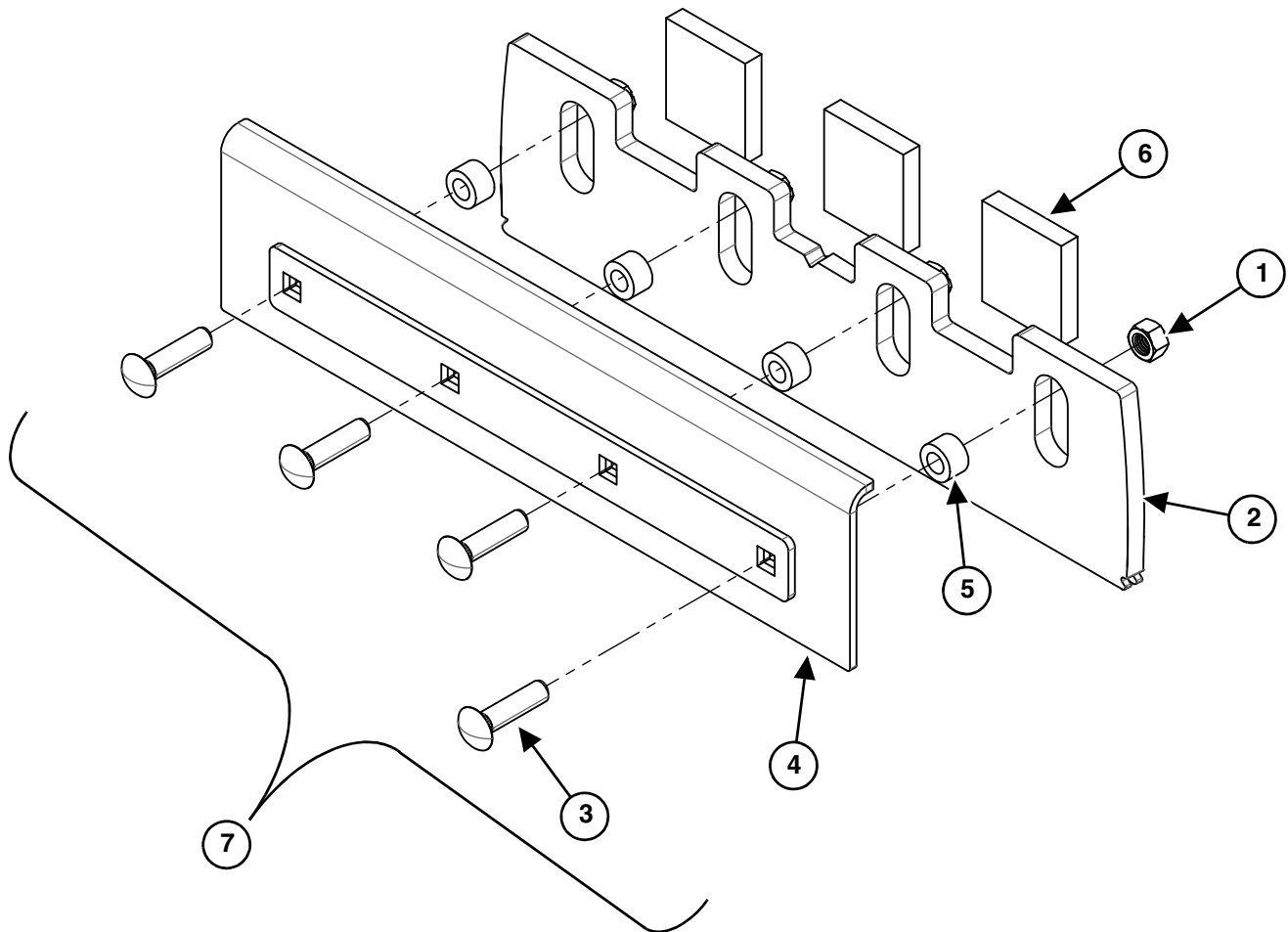
ITEM	PART #	DESCRIPTION	QTY
1	P40012	NUT, LOCK, 5/8-11, ZINC	4
2	P50011-24-SEC	BLADE, 24"	1
3	P81011	BOLT, CARRIAGE, 5/8-11 x 2-1/2", GR 8	4
4	P60252	RETAINING WELDMENT, 24"	1
5	P60253	BUSHING, STANDOFF	4
6	P60254	SPRING, RUBBER	3
7	P60250-K	KIT, 24" SECTION (kit includes items 1, 2, 3, 4, 5, & 6)	1

ActivEdge, Carbide, AR400, 18" Sectional Blade (QP and QPXT Models)



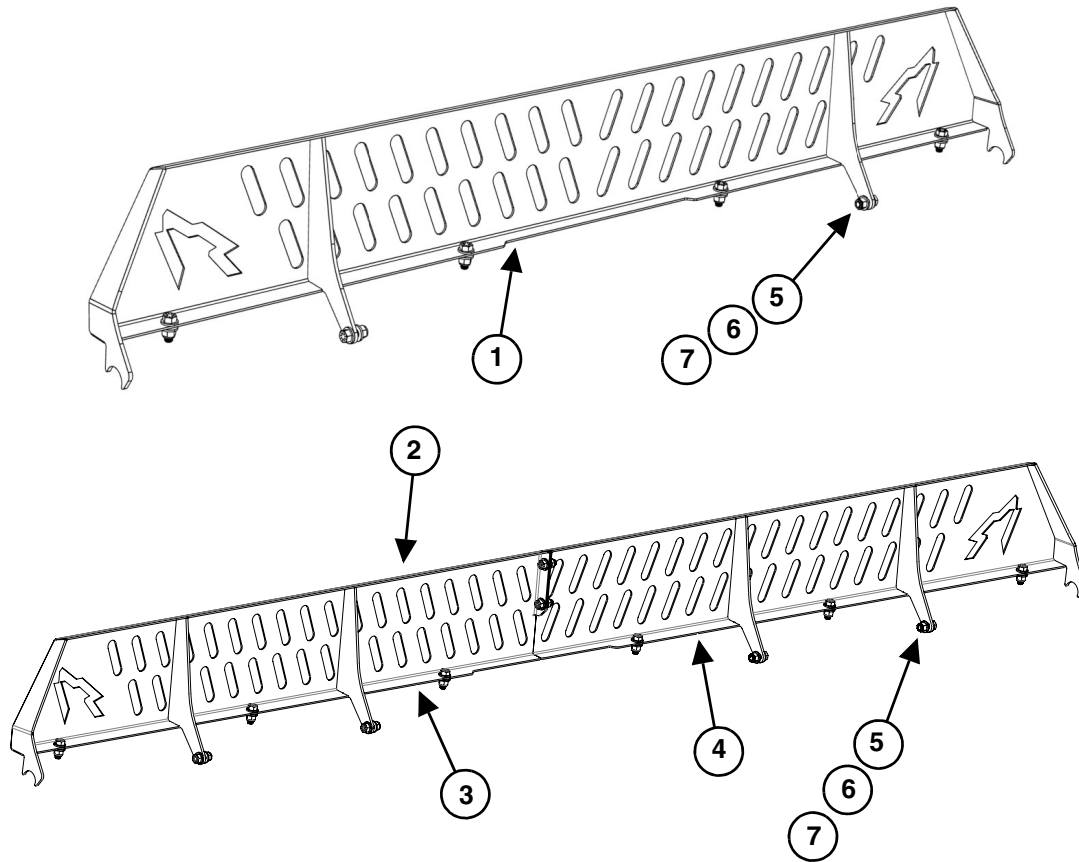
ITEM	PART #	DESCRIPTION	QTY
1	P40012	NUT, LOCK, 5/8-11, ZINC	3
2	P80109-CARB	BLADE, 24"	1
3	P81011	BOLT, CARRIAGE, 5/8-11 x 2-1/2", GR 8	3
4	P60255	RETAINING WELDMENT, 18"	1
5	P80107	BUSHING, STANDOFF	3
6	P60254	SPRING, FOAM	2
7	P80112-CARB-K	KIT, 18" SECTION (kit includes items 1, 2, 3, 4, 5, & 6)	1

ActivEdge, Carbide, AR400, 24" Sectional Blade (QP and QPXT Models)



ITEM	PART #	DESCRIPTION	QTY
1	P40012	NUT, LOCK, 5/8-11	4
2	P80106-CARB	BLADE, 24"	1
3	P81011	BOLT, CARRIAGE, 5/8-11 x 2-1/2", GR 8	4
4	P60252	RETAINING WELDMENT, 24"	1
5	P80107	BUSHING, STANDOFF	4
6	P60254	SPRING, FOAM	3
7	P80110-CARB-K	KIT, 24" SECTION (kit includes items 1, 2, 3, 4, 5, & 6)	1

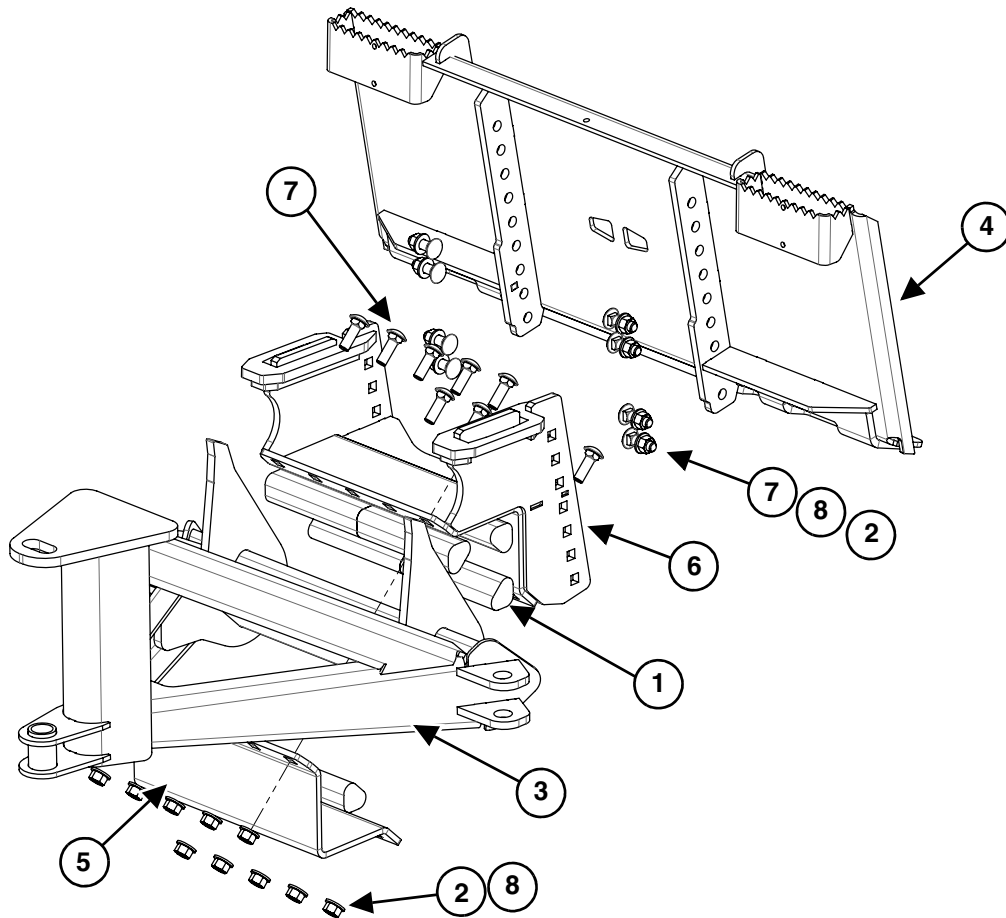
Spill Guard



ITEM	PART #	DESCRIPTION	QTY				
1	P60276-K	7' SPILL GUARD KIT, w/ HW for QP-102	1				
	P60270-K	8' SPILL GUARD, KIT, w/ HW for QP-114	1				
	P60271-K	9' SPILL GUARD, KIT, w/ HW for QP-126	1				
2	P60272-K	10' SPILL GUARD, KIT, w/ HW for QP-138	1				
3	P60272-L	10' SPILL GUARD, LEFT ONLY	1				
4	P60272-R	10' SPILL GUARD, RIGHT ONLY	1				
2	P60273-K	11' SPILL GUARD, KIT, w/ HW for QP-150	1				
3	P60273-L	11' SPILL GUARD, LEFT ONLY	1				
4	P60273-R	11' SPILL GUARD, RIGHT ONLY	1				
ITEM	PART #	DESCRIPTION	QP-102 QTY	QP-114 QTY	QP-126 QPXT-126 QTY	QP-138 QPXT-138 QTY	QP-150 QPXT-150 QTY
5	P60274	BOLT, HEX, 1/2 X 1", ZINC, GR8	6	6	8	12	12
6	P60222	WASHER, FLAT, 1/2" SAE, ZINC	12	12	16	24	24
7	P25045	NUT, LOCK, 1/2" ZINC, GRADE C	6	6	8	12	12

Flex Frame

NOTE: The Flex Fame is standard on QPXT models and optional on QP models.



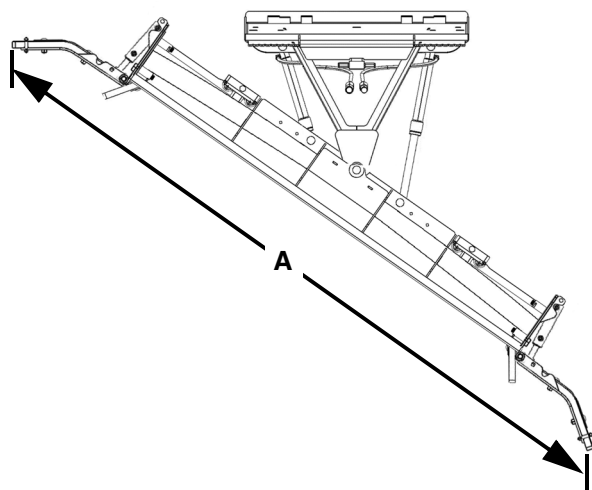
ITEM	PART #	DESCRIPTION	QTY
	P50020	FLEX FRAME	
1	P20042	INSERT RUBBER, FOR T-FRAME, (16.00" LONG)	4
2	P40012	NUT, LOCK 5/8-11, ZINC, GRADE C	18
3	P50027	FLEX FRAME, A-FRAME WELDMENT, BLACK	1
4	P50028	FLEX FRAME MOUNT PLATE	1
5	P50029	TORSION CLAM SHELL	1
6	P50030	FLEX FRAME, REAR TORSION WELDMENT	1
7	P60010	BOLT, CARRIAGE, 5/8-11 x 2" GRADE 5	18
8	P60096	WASHER, FLAT, 5/8" GRADE 8	18



Attachment Specifications (QP Models)	71
Dimensions (QP Models)	72
Attachment Specifications (QPXT Models)	73
Dimensions (QPXT Models)	74
Torque Specifications	75

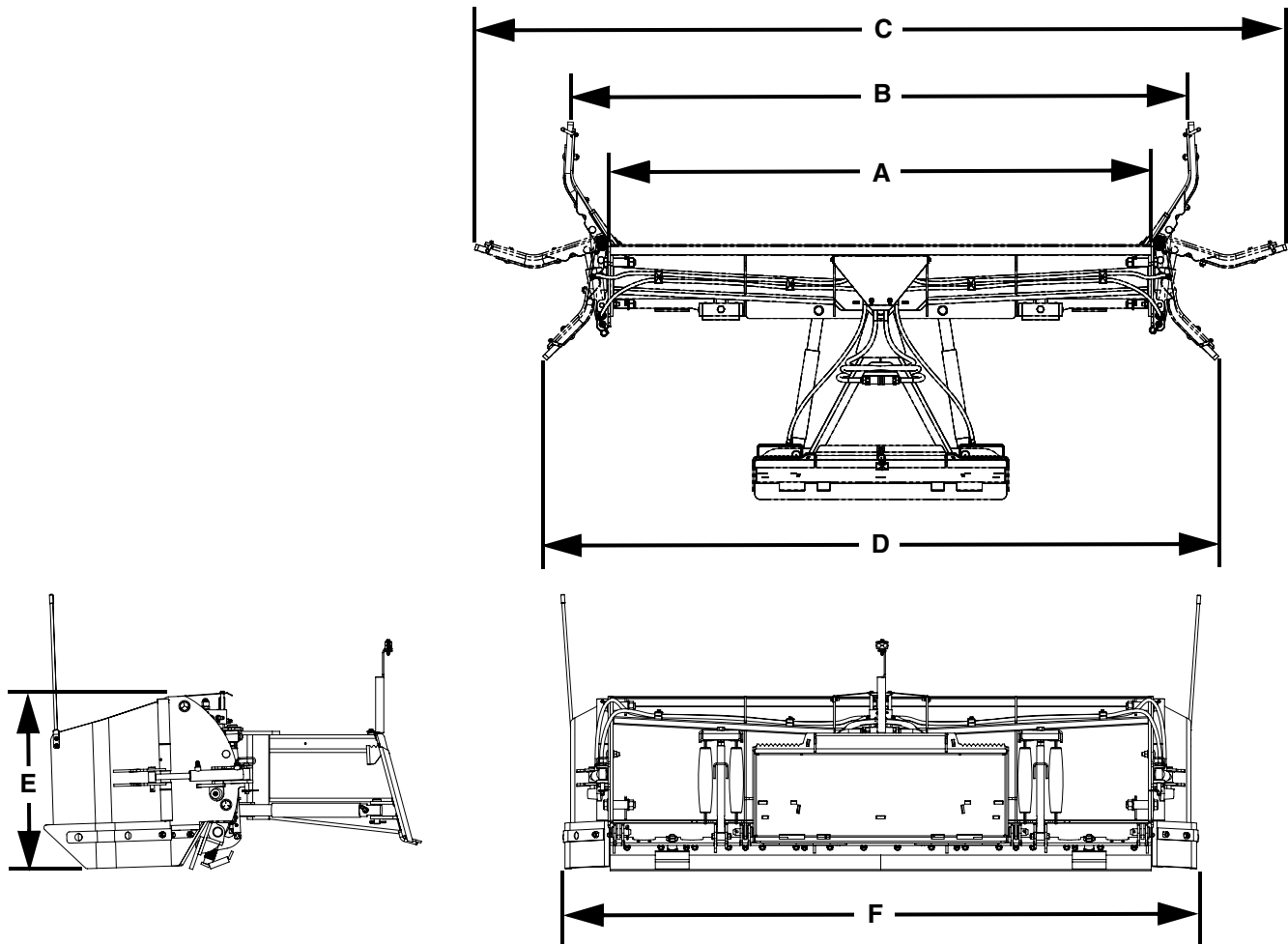


Attachment Specifications (QP Models)



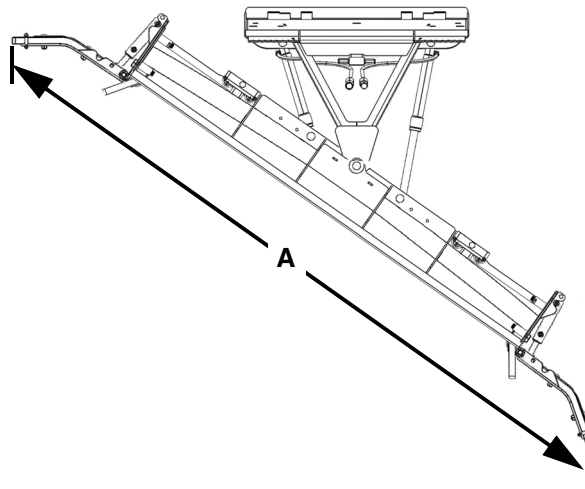
DESCRIPTION	FOR MACHINES WEIGHING 6,000 TO 10,000 LBS.			
	QP-102	QP-114	QP-126	QP-138
Blade Width	7.0'	8.0'	9.0'	10.0'
Clearing Width at Wide Angle (A)	106" (8' 10")	116" (9' 8")	126" (10' 6")	136" (11' 4")
Blade Height	30.7"	30.7"	30.7"	30.7"
Weight (lbs.)	1,132	1,269	1,301	1,345
Moldboard Gauge	10 ga.	10 ga.	10 ga.	10 ga.
Trip Springs	4 Ext.	4 Ext.	4 Ext.	4 Ext.
Wear Shoes	Opt.	Opt.	Opt.	Opt.
Active Edge	Opt.	Opt.	Opt.	Opt.
Moldboard Cutting Edge	5/8" x 6" Top Punch High Carbon Standard, (Carbide Insert Optional)			
Angle Rams	2" x 13"			
Vertical Ribs	6	6	6	8
Moldboard Radius	14"	14"	14"	14"
Full Down Pressure	Yes	Yes	Yes	Yes
Universal Skid Steer Compatible	Standard			
Crossover Relief Valve	Standard			
Wing Thickness	3/8" Grade 50			
Wing Wear Shoes	1" High Density Urethane			
Wing Hinge Pin	1-3/8" x 21-1/2"			
Wing Cylinder	1-1/2" x 6" - Double Acting			
PowerWing Upgrade	Optional			

Dimensions (QP Models)



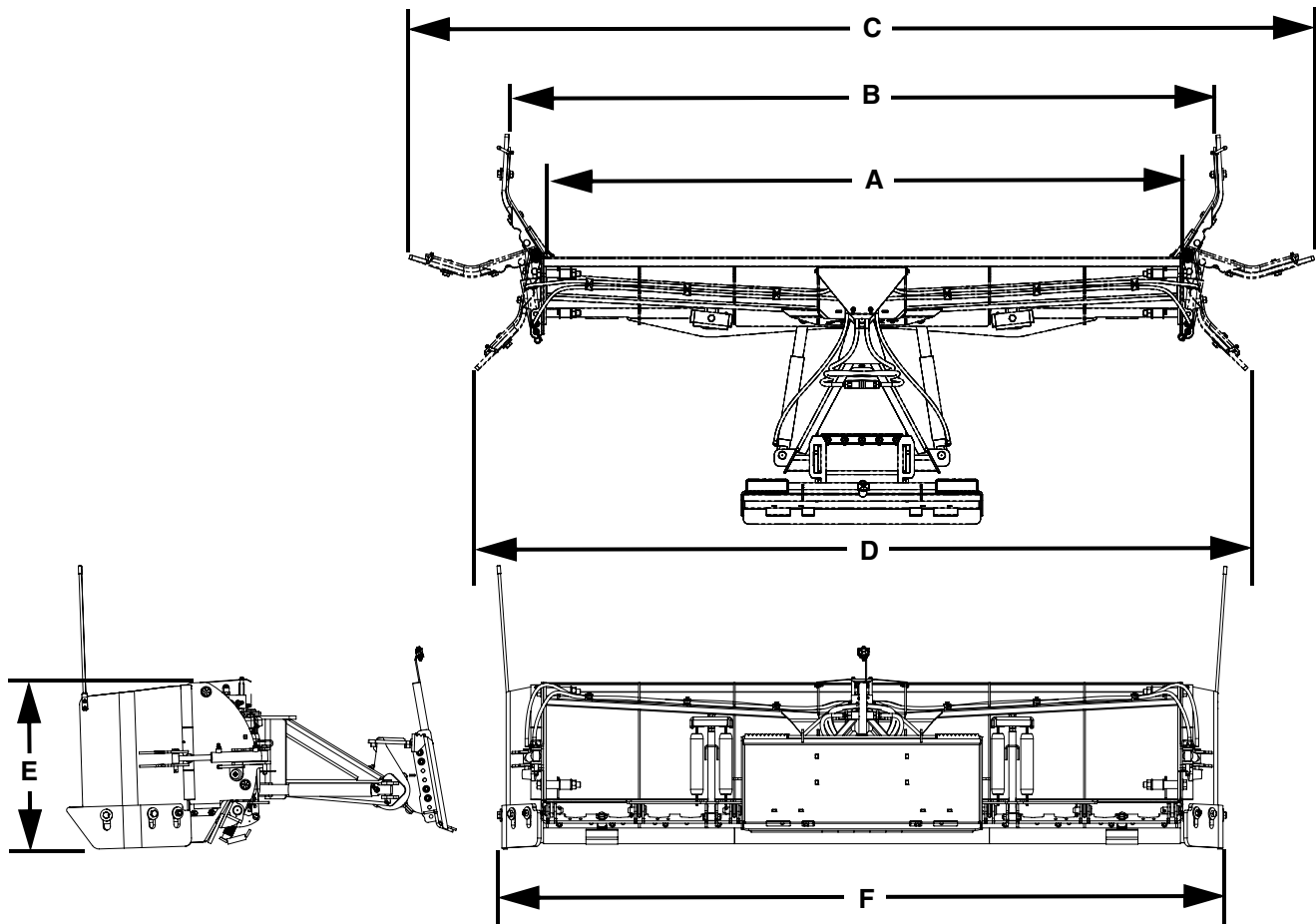
DESCRIPTION	QP-102	QP-114	QP-126	QP-138
Blade Width (A)	7.0'	8.0'	9.0'	10.0'
Width In Pusher Position (B)	102" (8' 6")	114" (9' 6")	126" (10' 6")	138" (11' 6")
Maximum Width (C)	130" (10' 10")	142" (11' 10")	154" (12' 10")	166" (13' 10")
Width In Backdrag Position (D)	102" (8' 6")	114" (9' 6")	126" (10' 6")	138" (11' 6")
Blade Height (E)	30.7"	30.7"	30.7"	30.7"
Overall Width (F)	101"	113"	125"	137"

Attachment Specifications (QPXT Models)



DESCRIPTION	FOR MACHINES WEIGHING 10,000 TO 15,000 LBS.		
	QPXT-126	QPXT-138	QPXT-150
Blade Width	9.0'	10.0'	11.0'
Clearing Width at Wide Angle (A)	126" (10' 6")	136" (11' 4")	146" (12' 2")
Blade Height	30.7"	30.7"	30.7"
Weight (lbs.)	1,464	1,540	1,575
Moldboard Gauge	10 ga.	10 ga.	10 ga.
Trip Springs	4 Ext.	4 Ext.	4 Ext.
Wear Shoes	Opt.	Opt.	Opt.
Active Edge	Opt.	Opt.	Opt.
Moldboard Cutting Edge	5/8" x 6" Top Punch High Carbon Standard, (Carbide Insert Optional)		
Angle Rams	2" x 13"		
Vertical Ribs	6	8	8
Moldboard Radius	14"	14"	14"
Full Down Pressure	Yes	Yes	Yes
Universal Skid Steer Compatible	Standard		
Crossover Relief Valve	Standard		
Wing Thickness	3/8" Grade 50		
Wing Wear Shoes	AR400 Floating Steel		
Wing Hinge Pin	1-3/8" x 21-1/2"		
Wing Cylinder	1-1/2" x 6"- Double Acting		
PowerWing Upgrade	Optional		

Dimensions (QPXT Models)



DESCRIPTION	QPXT-126	QPXT-138	QPXT-150
Blade Width (A)	9.0'	10.0'	11.0'
Width In Pusher Position (B)	126" (10' 6")	138" (11' 6")	150" (12' 6")
Maximum Width (C)	154" (12' 10")	166" (13' 10")	178" (14' 10")
Width In Backdrag Position (D)	126" (10' 6")	138" (11' 6")	150" (12' 6")
Blade Height (E)	30.7"	30.7"	30.7"
Overall Width (F)	125"	137"	149"

Torque Specifications

Standard Hardware And Lock Nuts

BOLT TYPE	SAE GRADE 5		SAE GRADE 8		LOCK NUTS			
	Plated or Unplated	Plated W / ZnCr	Plated or Unplated	Plated W / ZnCr	Plated or Unplated	Plated W / ZnCr	W / Grade 5 Bolt	W / Grade 8 Bolt
	Silver	Gold	Silver	Gold	Silver	Gold		
1/4	55 in / lb (6.2 N•m)	72 in / lb (8.1 N•m)	86 in / lb (9.7 N•m)	112 in / lb (12.6 N•m)	121 in / lb (13.6 N•m)	157 in / lb (17.7 N•m)	61 in / lb (6.9 N•m)	86 in / lb (9.8 N•m)
5/16	115 in / lb (13 N•m)	149 in / lb (17 N•m)	178 in / lb (20 N•m)	229 in / lb (26 N•m)	250 in / lb (28 N•m)	325 in / lb (37 N•m)	125 in / lb (14 N•m)	176 in / lb (20 N•m)
3/8	17 ft / lb (23 N•m)	22 ft / lb (30 N•m)	26 ft / lb (35 N•m)	34 ft / lb (46 N•m)	37 ft / lb (50 N•m)	48 ft / lb (65 N•m)	19 ft / lb (26 N•m)	26 ft / lb (35 N•m)
7/16	27 ft / lb (37 N•m)	35 ft / lb (47 N•m)	42 ft / lb (57 N•m)	54 ft / lb (73 N•m)	59 ft / lb (80 N•m)	77 ft / lb (104 N•m)	30 ft / lb (41 N•m)	42 ft / lb (57 N•m)
1/2	42 ft / lb (57 N•m)	54 ft / lb (73 N•m)	64 ft / lb (87 N•m)	83 ft / lb (113 N•m)	91 ft / lb (123 N•m)	117 ft / lb (159 N•m)	45 ft / lb (61 N•m)	64 ft / lb (88 N•m)
9/16	60 ft / lb (81 N•m)	77 ft / lb (104 N•m)	92 ft / lb (125 N•m)	120 ft / lb (163 N•m)	130 ft / lb (176 N•m)	169 ft / lb (229 N•m)	65 ft / lb (88 N•m)	92 ft / lb (125 N•m)
5/8	83 ft / lb (112 N•m)	107 ft / lb (145 N•m)	128 ft / lb (174 N•m)	165 ft / lb (224 N•m)	180 ft / lb (244 N•m)	233 ft / lb (316 N•m)	90 ft / lb (122 N•m)	127 ft / lb (172 N•m)
3/4	146 ft / lb (198 N•m)	189 ft / lb (256 N•m)	226 ft / lb (306 N•m)	293 ft / lb (397 N•m)	319 ft / lb (432 N•m)	413 ft / lb (560 N•m)	160 ft / lb (217 N•m)	226 ft / lb (306 N•m)
7/8	142 ft / lb (193 N•m)	183 ft / lb (248 N•m)	365 ft / lb (495 N•m)	473 ft / lb (641 N•m)	515 ft / lb (698 N•m)	667 ft / lb (904 N•m)	258 ft / lb (350 N•m)	364 ft / lb (494 N•m)
1	213 ft / lb (289 N•m)	275 ft / lb (373 N•m)	547 ft / lb (742 N•m)	708 ft / lb (960 N•m)	773 ft / lb (1048 N•m)	1000 ft / lb (1356 N•m)	386 ft / lb (523 N•m)	545 ft / lb (739 N•m)





15100 Business Parkway, Rosemount, MN 55068
1-800-905-2265 / snowwolfplows.com